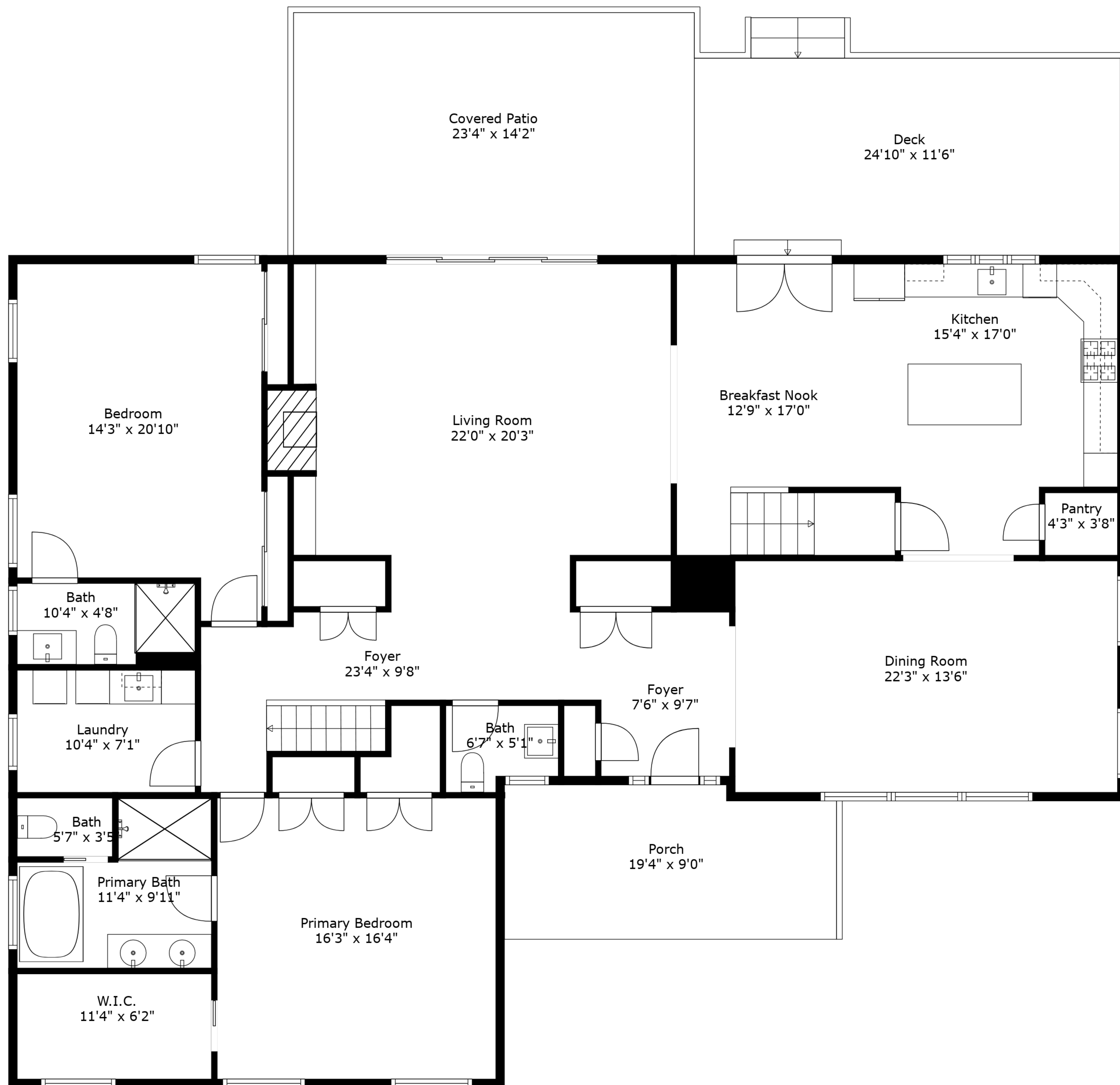


TOTAL: 4001 sq. ft

BELOW GROUND: 919 sq. ft, FLOOR 2: 2417 sq. ft, FLOOR 3: 665 sq. ft
EXCLUDED AREAS: UTILITY: 185 sq. ft, GARAGE: 709 sq. ft, WINE CELLAR: 87 sq. ft,
STORAGE: 436 sq. ft, PORCH: 168 sq. ft, COVERED PATIO: 330 sq. ft,
DECK: 285 sq. ft, LOW CEILING: 502 sq. ft, ATTIC: 460 sq. ft

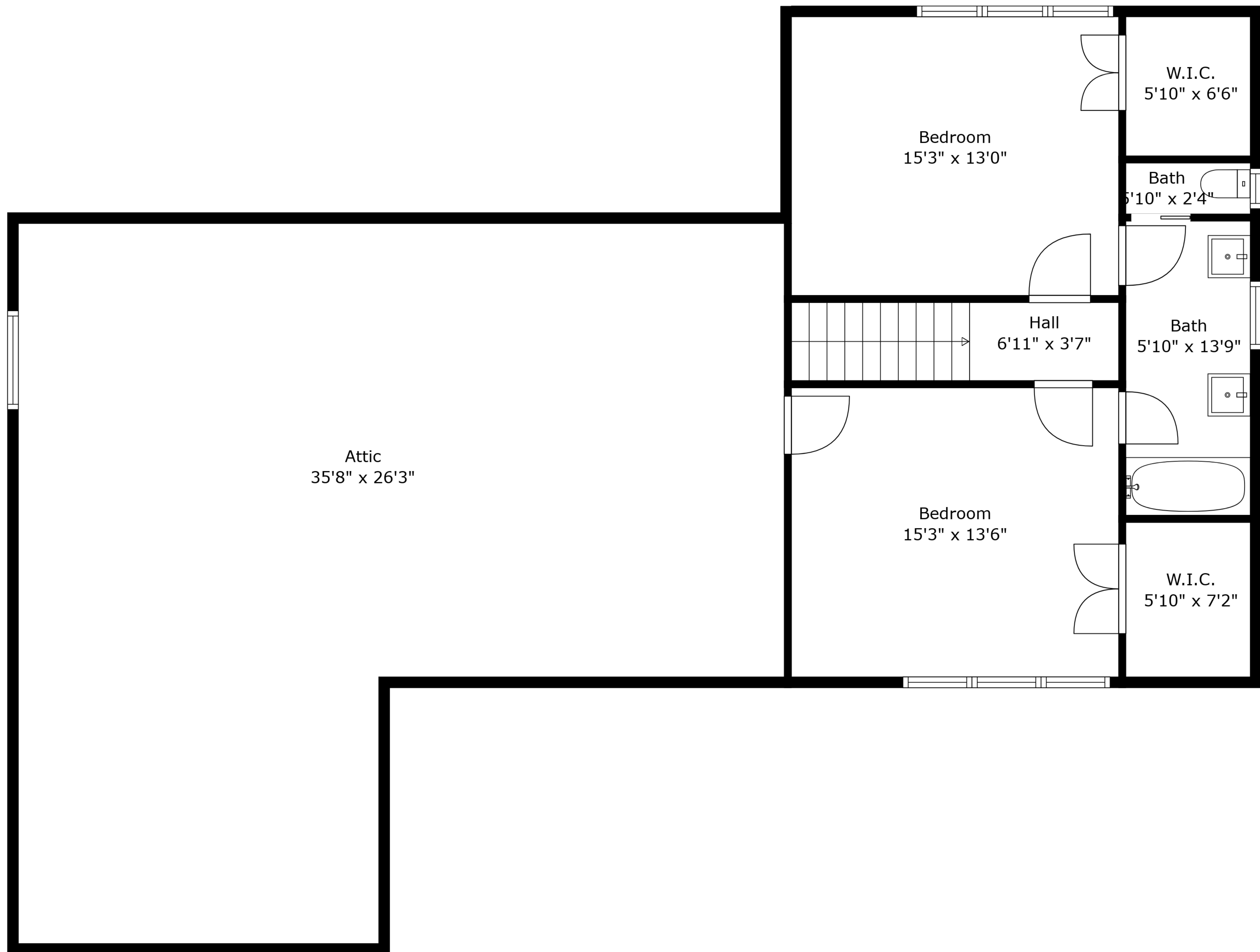
Measurements Are Approximate - Deemed Highly Reliable But Not Guaranteed



TOTAL: 4001 sq. ft

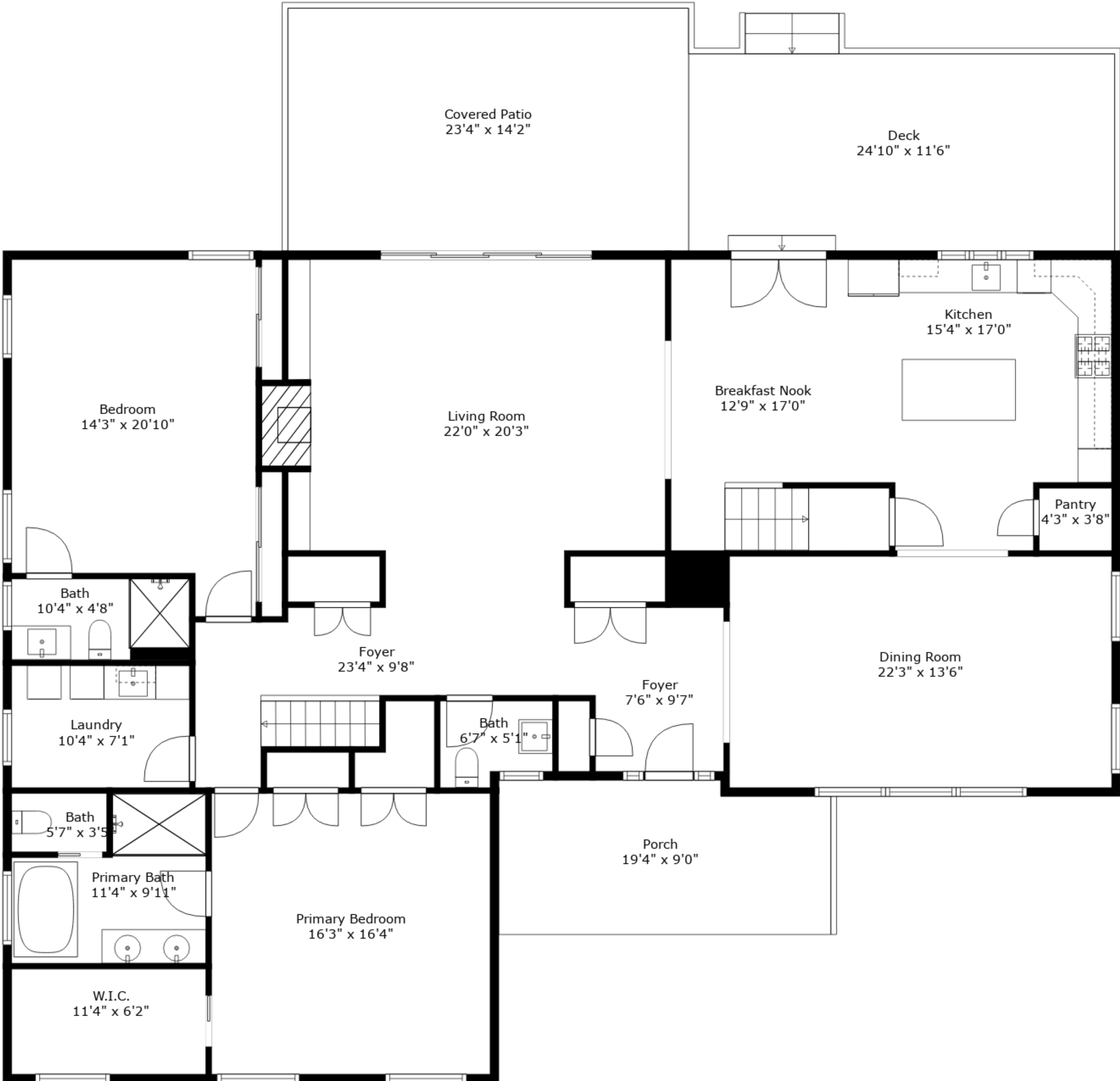
BELOW GROUND: 919 sq. ft, FLOOR 2: 2417 sq. ft, FLOOR 3: 665 sq. ft
EXCLUDED AREAS: UTILITY: 185 sq. ft, GARAGE: 709 sq. ft, WINE CELLAR: 87 sq. ft,
STORAGE: 436 sq. ft, PORCH: 168 sq. ft, COVERED PATIO: 330 sq. ft,
DECK: 285 sq. ft, LOW CEILING: 502 sq. ft, ATTIC: 460 sq. ft

Measurements Are Approximate - Deemed Highly Reliable But Not Guaranteed

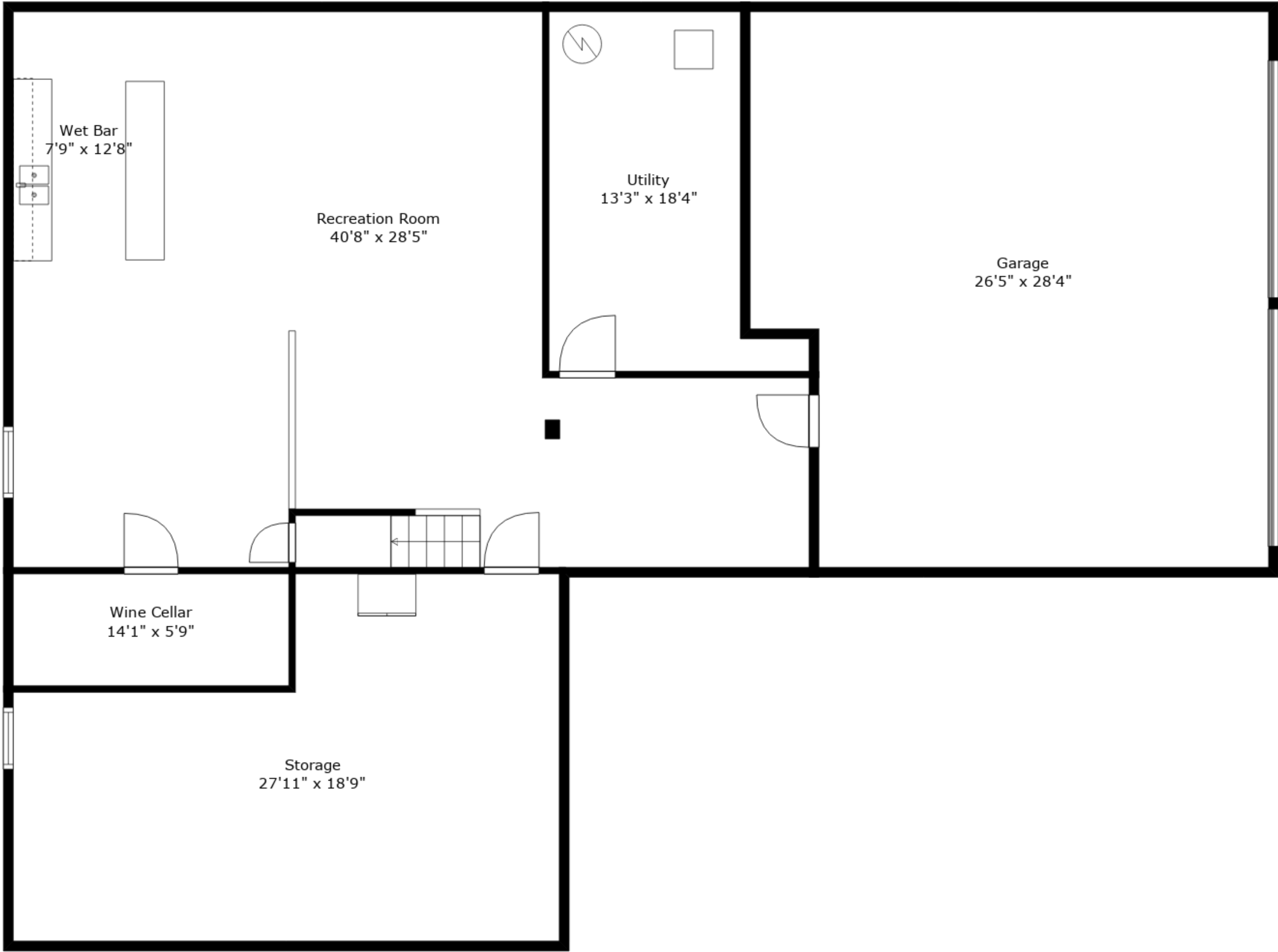


TOTAL: 4001 sq. ft
BELOW GROUND: 919 sq. ft, FLOOR 2: 2417 sq. ft, FLOOR 3: 665 sq. ft
EXCLUDED AREAS: UTILITY: 185 sq. ft, GARAGE: 709 sq. ft, WINE CELLAR: 87 sq. ft,
STORAGE: 436 sq. ft, PORCH: 168 sq. ft, COVERED PATIO: 330 sq. ft,
DECK: 285 sq. ft, LOW CEILING: 502 sq. ft, ATTIC: 460 sq. ft

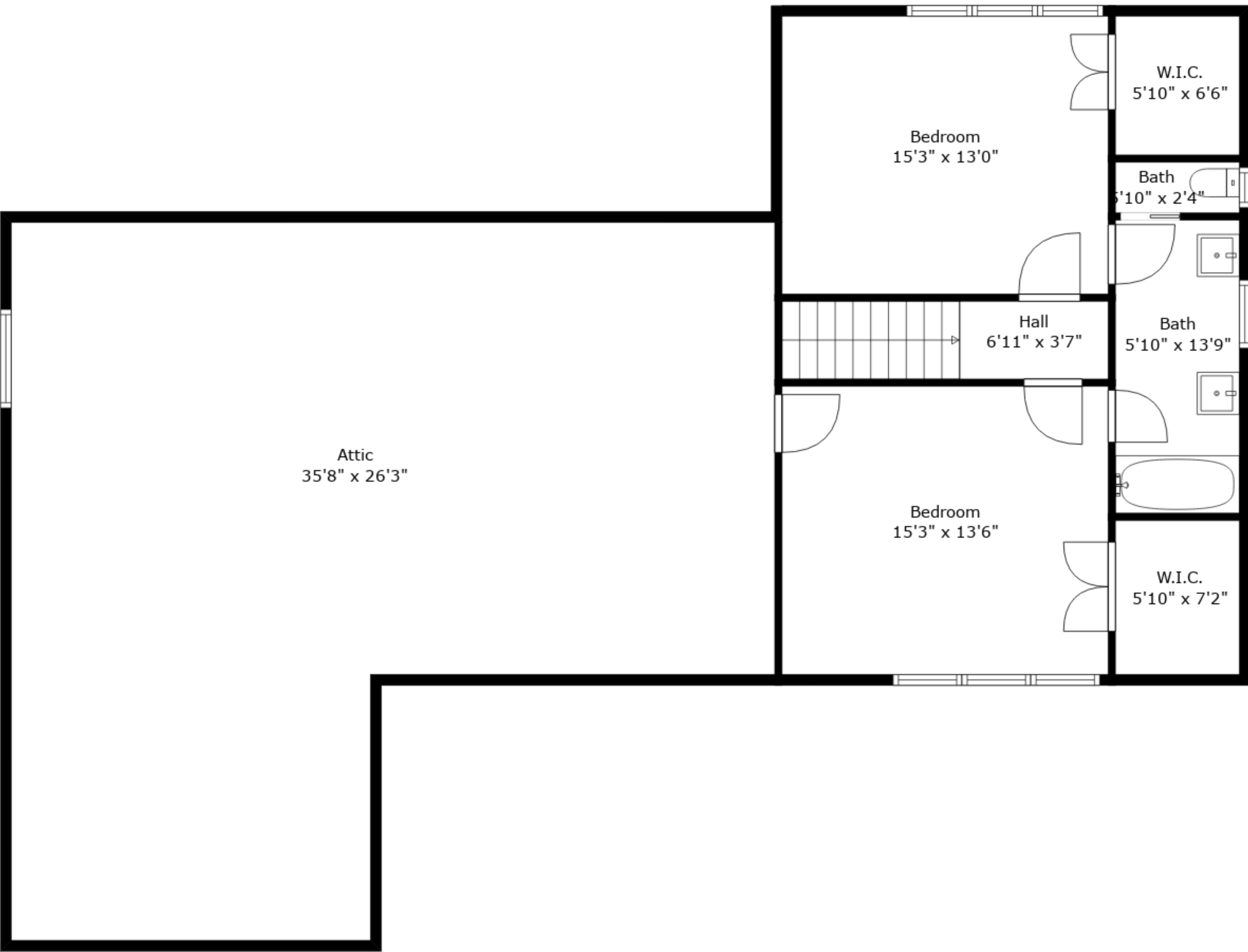
Measurements Are Approximate - Deemed Highly Reliable But Not Guaranteed



Floor 2



Floor 1



Floor 3

TOTAL: 4001 sq. ft
 BELOW GROUND: 919 sq. ft, FLOOR 2: 2417 sq. ft, FLOOR 3: 665 sq. ft
 EXCLUDED AREAS: UTILITY: 185 sq. ft, GARAGE: 709 sq. ft, WINE CELLAR: 87 sq. ft,
 STORAGE: 436 sq. ft, PORCH: 168 sq. ft, COVERED PATIO: 330 sq. ft,
 DECK: 285 sq. ft, LOW CEILING: 502 sq. ft, ATTIC: 460 sq. ft

Measurements Are Approximate - Deemed Highly Reliable But Not Guaranteed