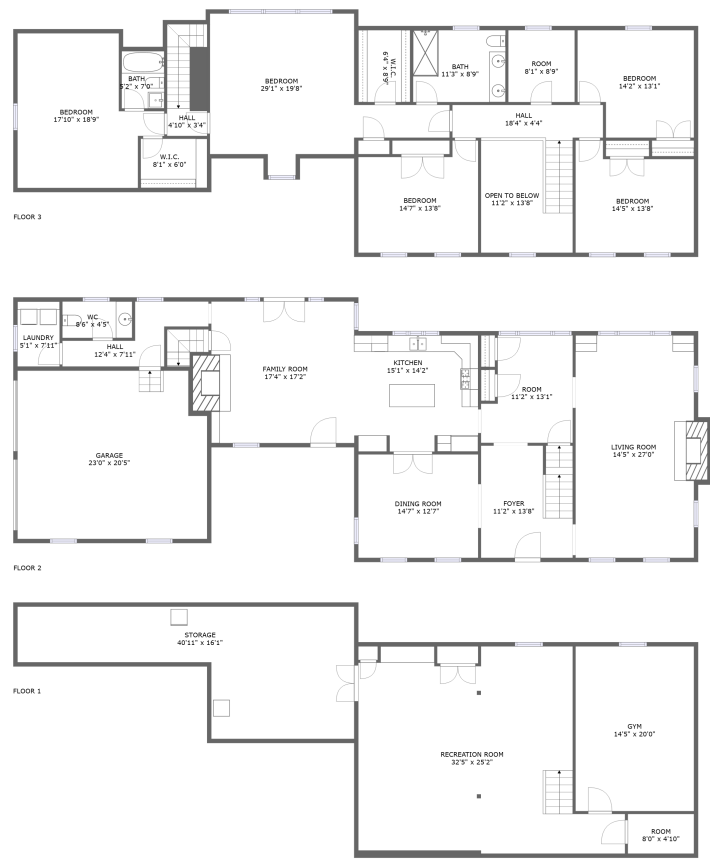


Home report

17 Quail Drive, Doylestown, Bucks County, Pennsylvania, United States, 18901



Total Area: 3324 sq. ft
Below Ground: 987 sq. ft, Floor 2: 1609 sq. ft, Floor 3: 1715 sq. ft
Excluded: Room 39 sq. ft, Storage 438 sq. ft, Garage 458 sq. ft, Fireplace 14 sq. ft, Open to below 120 sq. ft, Low ceiling 14 sq. ft, Walls: 376 sq. ft

Property summary

**3** Floors

**5** Bedrooms

**2** Bathrooms

Home report

17 Quail Drive, Doylestown, Bucks County, Pennsylvania, United States, 18901



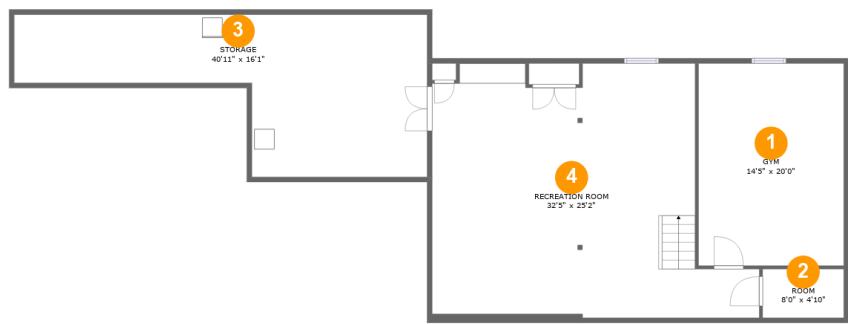
1
Half baths



1
Garages

Home report

17 Quail Drive, Doylestown, Bucks County, Pennsylvania, United States, 18901



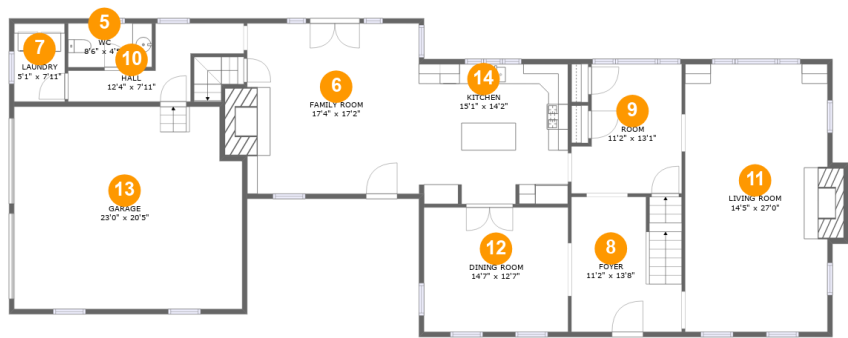
Room dimensions

Floor 1 Below ground Total:987sqft Excluded: 477sqft

#		Max Dimensions	sqft	Included
1	Gym	14'5" x 20'0"	288 sq. ft	Yes
2	Room	8'0" x 4'10"	39 sq. ft	No
3	Storage	40'11" x 16'1"	438 sq. ft	No
4	Recreation Room	32'5" x 25'2"	661 sq. ft	Yes

Home report

17 Quail Drive, Doylestown, Bucks County, Pennsylvania, United States, 18901



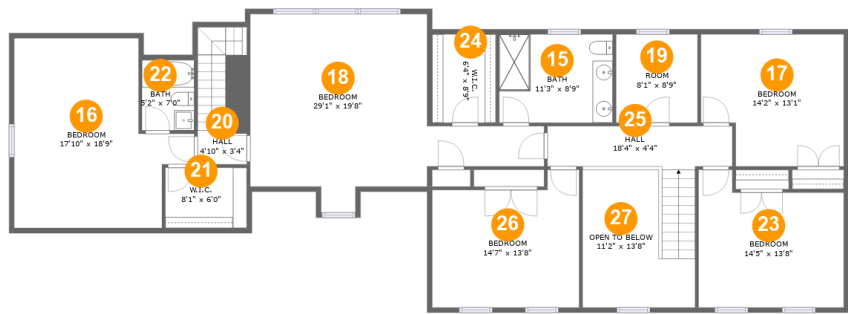
Room dimensions

Floor 2 Total:1609sqft Excluded: 472sqft

#		Max Dimensions	sqft	Included
5	WC	8'6" x 4'5"	38 sq. ft	Yes
6	Family Room	17'4" x 17'2"	314 sq. ft	Yes
7	Laundry	5'1" x 7'11"	40 sq. ft	Yes
8	Foyer	11'2" x 13'8"	151 sq. ft	Yes
9	Room	11'2" x 13'1"	129 sq. ft	Yes
10	Hall	12'4" x 7'11"	72 sq. ft	Yes
11	Living Room	14'5" x 27'0"	401 sq. ft	Yes
12	Dining Room	14'7" x 12'7"	183 sq. ft	Yes
13	Garage	23'0" x 20'5"	458 sq. ft	No
14	Kitchen	15'1" x 14'2"	211 sq. ft	Yes

Home report

17 Quail Drive, Doylestown, Bucks County, Pennsylvania, United States, 18901



Room dimensions

Floor 3

Total:1715sqft Excluded: 134sqft

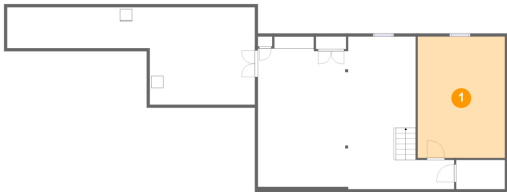
#		Max Dimensions	sqft	Included
15	Bath	11'3" x 8'9"	98 sq. ft	Yes
16	Bedroom	17'10" x 18'9"	263 sq. ft	Yes
17	Bedroom	14'2" x 13'1"	170 sq. ft	Yes
18	Bedroom	29'1" x 19'8"	341 sq. ft	Yes
19	Room	8'1" x 8'9"	71 sq. ft	Yes
20	Hall	4'10" x 3'4"	66 sq. ft	Yes
21	W.I.C.	8'1" x 6'0"	48 sq. ft	Yes
22	Bath	5'2" x 7'0"	36 sq. ft	Yes
23	Bedroom	14'5" x 13'8"	171 sq. ft	Yes
24	W.I.C.	6'4" x 8'9"	55 sq. ft	Yes
25	Hall	18'4" x 4'4"	109 sq. ft	Yes

Home report

17 Quail Drive, Doylestown, Bucks County, Pennsylvania, United States, 18901

#		Max Dimensions	sqft	Included
26	Bedroom	14'7" x 13'8"	176 sq. ft	Yes
27	Open To Below	11'2" x 13'8"	120 sq. ft	No

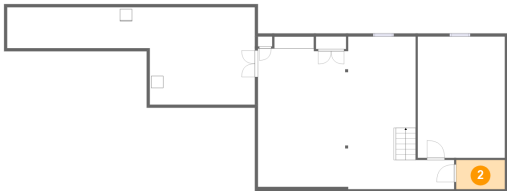
1 Floor 1 - Gym



Max Dimensions: 14'5" x 20'0"
Calculated Area: 288 sq. ft
Included: Yes

Heated: Yes
Finished: Yes
Enclosed: Yes
Contiguous: Yes
Permitted: Yes
Wet space: No
Addition: No
Conversion: No

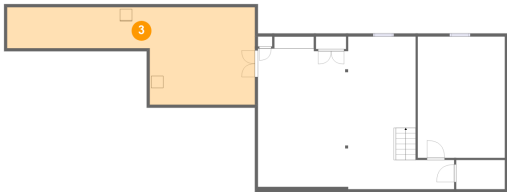
2 Floor 1 - Room



Max Dimensions: 8'0" x 4'10"
Calculated Area: 39 sq. ft
Included: No

Heated: Yes
Finished: No
Enclosed: Yes
Contiguous: Yes
Permitted: Yes
Wet space: No
Addition: No
Conversion: No

3 Floor 1 - Storage



Max Dimensions: 40'11" x 16'1"
Calculated Area: 438 sq. ft
Included: No

Heated: No
Finished: No
Enclosed: No
Contiguous: Yes
Permitted: Yes
Wet space: No
Addition: No
Conversion: No

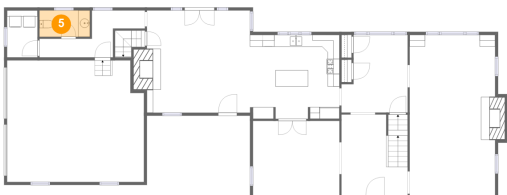
4 Floor 1 - Recreation Room



Max Dimensions: 32'5" x 25'2"
Calculated Area: 661 sq. ft
Included: Yes

Heated: Yes
Finished: Yes
Enclosed: Yes
Contiguous: Yes
Permitted: Yes
Wet space: No
Addition: No
Conversion: No

5 Floor 2 - WC



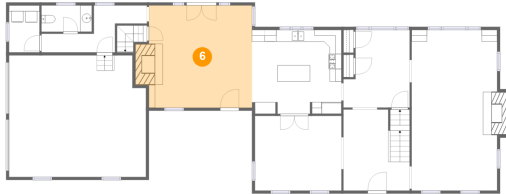
Max Dimensions: 8'6" x 4'5"
Calculated Area: 38 sq. ft
Included: Yes

Heated: Yes
Finished: Yes
Enclosed: Yes
Contiguous: Yes
Permitted: Yes
Wet space: Yes
Addition: No
Conversion: No

Home report

17 Quail Drive, Doylestown, Bucks County, Pennsylvania, United States, 18901

6 Floor 2 - Family Room



Max Dimensions: 17'4" x 17'2"
Calculated Area: 314 sq. ft
Included: Yes

Heated: Yes
Finished: Yes
Enclosed: Yes
Contiguous: Yes
Permitted: Yes
Wet space: No
Addition: No
Conversion: No

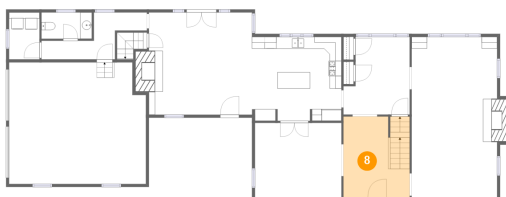
7 Floor 2 - Laundry



Max Dimensions: 5'1" x 7'11"
Calculated Area: 40 sq. ft
Included: Yes

Heated: Yes
Finished: Yes
Enclosed: Yes
Contiguous: Yes
Permitted: Yes
Wet space: No
Addition: No
Conversion: No

8 Floor 2 - Foyer



Max Dimensions: 11'2" x 13'8"
Calculated Area: 151 sq. ft
Included: Yes

Heated: Yes
Finished: Yes
Enclosed: Yes
Contiguous: Yes
Permitted: Yes
Wet space: No
Addition: No
Conversion: No

Home report

17 Quail Drive, Doylestown, Bucks County, Pennsylvania, United States, 18901

9 Floor 2 - Room



Max Dimensions: 11'2" x 13'1"
Calculated Area: 129 sq. ft
Included: Yes

Heated: Yes
Finished: Yes
Enclosed: Yes
Contiguous: Yes
Permitted: Yes
Wet space: No
Addition: No
Conversion: No

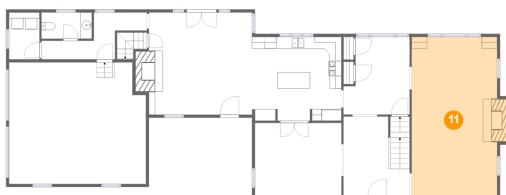
10 Floor 2 - Hall



Max Dimensions: 12'4" x 7'11"
Calculated Area: 72 sq. ft
Included: Yes

Heated: Yes
Finished: Yes
Enclosed: Yes
Contiguous: Yes
Permitted: Yes
Wet space: No
Addition: No
Conversion: No

11 Floor 2 - Living Room



Max Dimensions: 14'5" x 27'0"
Calculated Area: 401 sq. ft
Included: Yes

Heated: Yes
Finished: Yes
Enclosed: Yes
Contiguous: Yes
Permitted: Yes
Wet space: No
Addition: No
Conversion: No

Home report

17 Quail Drive, Doylestown, Bucks County, Pennsylvania, United States, 18901

12 Floor 2 - Dining Room



Max Dimensions: 14'7" x 12'7"
Calculated Area: 183 sq. ft
Included: Yes

Heated: Yes
Finished: Yes
Enclosed: Yes
Contiguous: Yes
Permitted: Yes
Wet space: No
Addition: No
Conversion: No

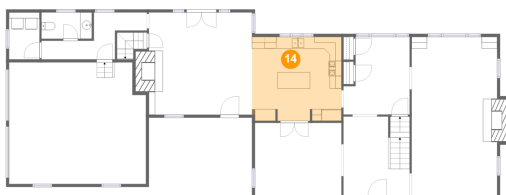
13 Floor 2 - Garage



Max Dimensions: 23'0" x 20'5"
Calculated Area: 458 sq. ft
Included: No

Heated: No
Finished: No
Enclosed: Yes
Contiguous: Yes
Permitted: Yes
Wet space: No
Addition: No
Conversion: No

14 Floor 2 - Kitchen



Max Dimensions: 15'1" x 14'2"
Calculated Area: 211 sq. ft
Included: Yes

Heated: Yes
Finished: Yes
Enclosed: Yes
Contiguous: Yes
Permitted: Yes
Wet space: No
Addition: No
Conversion: No

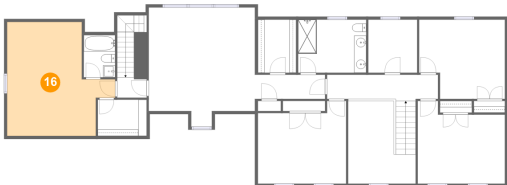
15 Floor 3 - Bath



Max Dimensions: 11'3" x 8'9"
Calculated Area: 98 sq. ft
Included: Yes

Heated: Yes
Finished: Yes
Enclosed: Yes
Contiguous: Yes
Permitted: Yes
Wet space: Yes
Addition: No
Conversion: No

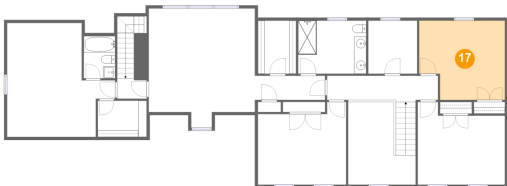
16 Floor 3 - Bedroom



Max Dimensions: 17'10" x 18'9"
Calculated Area: 263 sq. ft
Included: Yes

Heated: Yes
Finished: Yes
Enclosed: Yes
Contiguous: Yes
Permitted: Yes
Wet space: No
Addition: No
Conversion: No

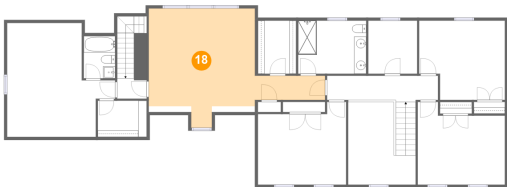
17 Floor 3 - Bedroom



Max Dimensions: 14'2" x 13'1"
Calculated Area: 170 sq. ft
Included: Yes

Heated: Yes
Finished: Yes
Enclosed: Yes
Contiguous: Yes
Permitted: Yes
Wet space: No
Addition: No
Conversion: No

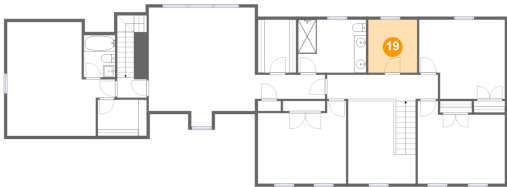
18 Floor 3 - Bedroom



Max Dimensions: 29'1" x 19'8"
Calculated Area: 341 sq. ft
Included: Yes

Heated: Yes
Finished: Yes
Enclosed: Yes
Contiguous: Yes
Permitted: Yes
Wet space: No
Addition: No
Conversion: No

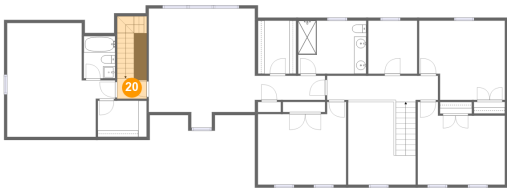
19 Floor 3 - Room



Max Dimensions: 8'1" x 8'9"
Calculated Area: 71 sq. ft
Included: Yes

Heated: Yes
Finished: Yes
Enclosed: Yes
Contiguous: Yes
Permitted: Yes
Wet space: No
Addition: No
Conversion: No

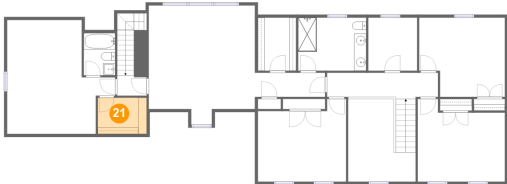
20 Floor 3 - Hall



Max Dimensions: 4'10" x 3'4"
Calculated Area: 66 sq. ft
Included: Yes

Heated: Yes
Finished: Yes
Enclosed: Yes
Contiguous: Yes
Permitted: Yes
Wet space: No
Addition: No
Conversion: No

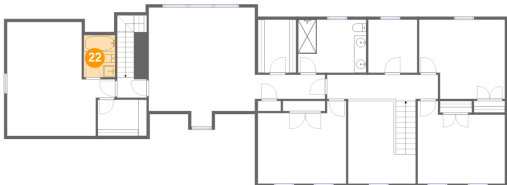
21 Floor 3 - W.I.C.



Max Dimensions: 8'1" x 6'0"
Calculated Area: 48 sq. ft
Included: Yes

Heated: Yes
Finished: Yes
Enclosed: Yes
Contiguous: Yes
Permitted: Yes
Wet space: No
Addition: No
Conversion: No

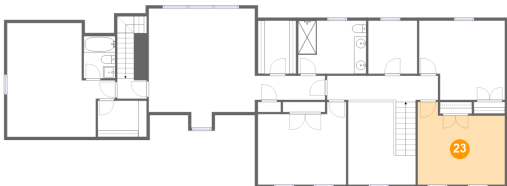
22 Floor 3 - Bath



Max Dimensions: 5'2" x 7'0"
Calculated Area: 36 sq. ft
Included: Yes

Heated: Yes
Finished: Yes
Enclosed: Yes
Contiguous: Yes
Permitted: Yes
Wet space: Yes
Addition: No
Conversion: No

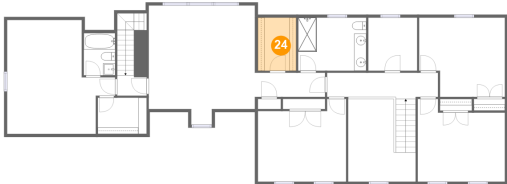
23 Floor 3 - Bedroom



Max Dimensions: 14'5" x 13'8"
Calculated Area: 171 sq. ft
Included: Yes

Heated: Yes
Finished: Yes
Enclosed: Yes
Contiguous: Yes
Permitted: Yes
Wet space: No
Addition: No
Conversion: No

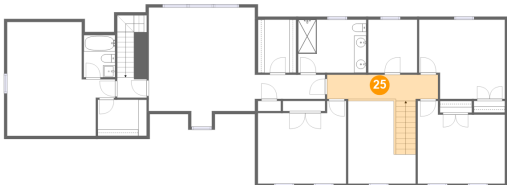
24 Floor 3 - W.I.C.



Max Dimensions: 6'4" x 8'9"
Calculated Area: 55 sq. ft
Included: Yes

Heated: Yes
Finished: Yes
Enclosed: Yes
Contiguous: Yes
Permitted: Yes
Wet space: No
Addition: No
Conversion: No

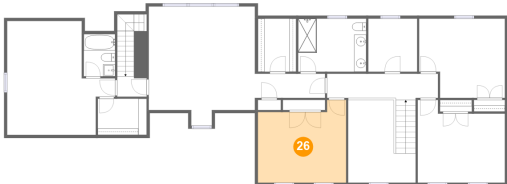
25 Floor 3 - Hall



Max Dimensions: 18'4" x 4'4"
Calculated Area: 109 sq. ft
Included: Yes

Heated: Yes
Finished: Yes
Enclosed: Yes
Contiguous: Yes
Permitted: Yes
Wet space: No
Addition: No
Conversion: No

26 Floor 3 - Bedroom



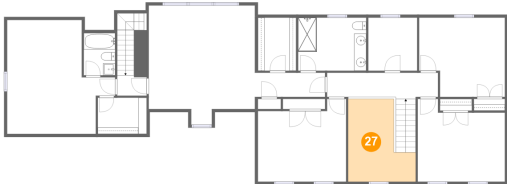
Max Dimensions: 14'7" x 13'8"
Calculated Area: 176 sq. ft
Included: Yes

Heated: Yes
Finished: Yes
Enclosed: Yes
Contiguous: Yes
Permitted: Yes
Wet space: No
Addition: No
Conversion: No

Home report

17 Quail Drive, Doylestown, Bucks County, Pennsylvania, United States, 18901

27 Floor 3 - Open To Below



Max Dimensions: 11'2" x 13'8"
Calculated Area: 120 sq. ft
Included: No

Heated: No
Finished: No
Enclosed: No
Contiguous: Yes
Permitted: No
Wet space: No
Addition: No
Conversion: No