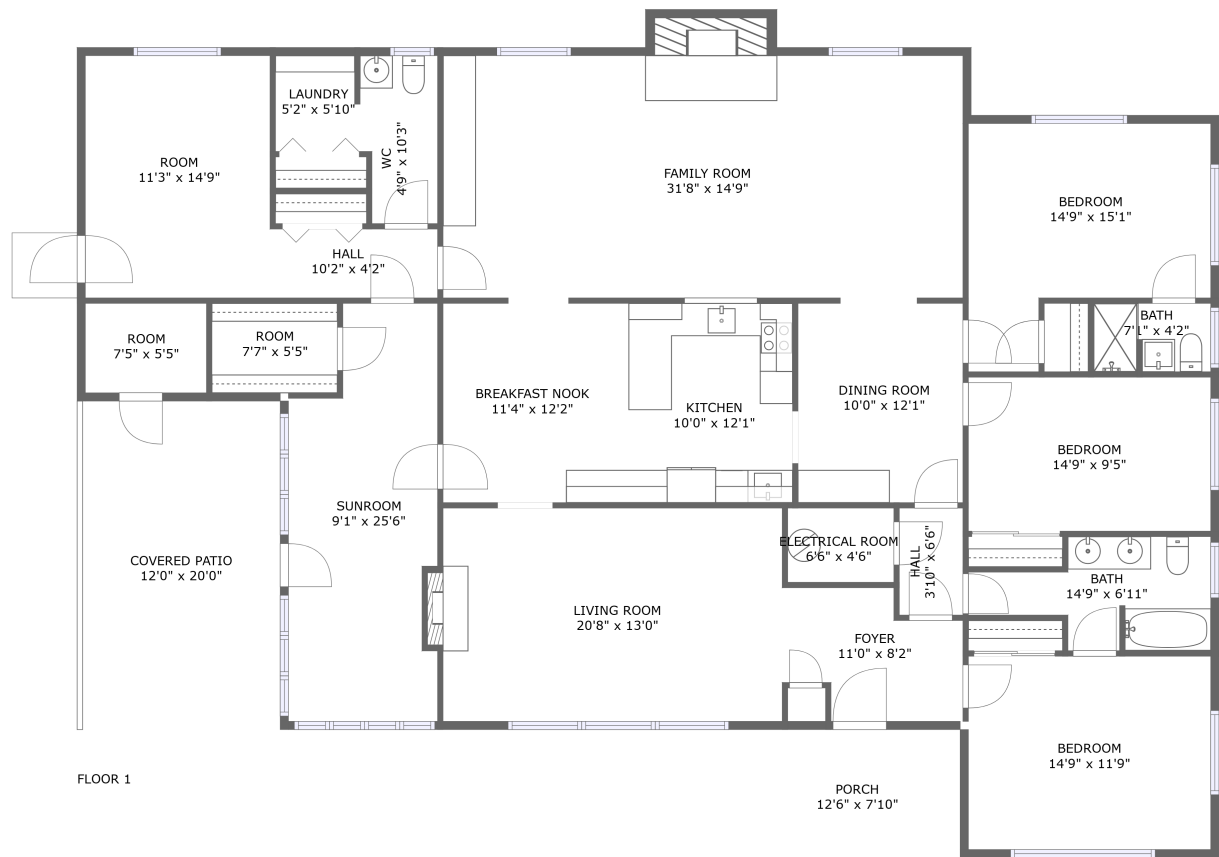




Home report


5329 Seagrove Plank Road, Asheboro, Randolph County, North Carolina, United States, 27205





Property summary


 **0** Garages


 **3** Bedrooms

 **2** Bathrooms

 **1** Half baths

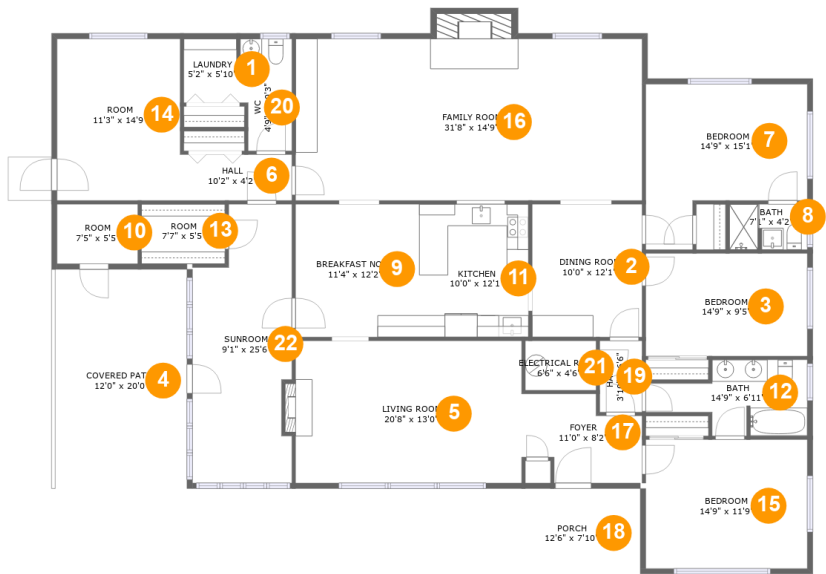
 **1** Floors

 **2,356** Gross living area sqft

 **3,061** Total sqft

Home report

5329 Seagrove Plank Road, Asheboro, Randolph County, North Carolina, United States, 27205



Room dimensions

Floor 1

Total sqft: 3061

Living area: 2356

#		Dimensions	sqft	Counted as living area
1	Laundry	5'2" x 5'10"	29 sq. ft	Yes
2	Dining Room	10'0" x 12'1"	122 sq. ft	Yes
3	Bedroom	14'9" x 9'5"	138 sq. ft	Yes
4	Covered Patio	12'0" x 20'0"	241 sq. ft	No
5	Living Room	20'8" x 13'0"	273 sq. ft	Yes
6	Hall	10'2" x 4'2"	43 sq. ft	Yes
7	Bedroom	14'9" x 15'1"	176 sq. ft	Yes
8	Bath	7'1" x 4'2"	29 sq. ft	Yes
9	Breakfast Nook	11'4" x 12'2"	137 sq. ft	Yes
10	Room	7'5" x 5'5"	40 sq. ft	No
11	Kitchen	10'0" x 12'1"	121 sq. ft	Yes

## Home report

**5329 Seagrove Plank Road, Asheboro, Randolph County, North Carolina, United States, 27205**

#		Dimensions	sqft	Counted as living area
12	Bath	14'9" x 6'11"	75 sq. ft	Yes
13	Room	7'7" x 5'5"	42 sq. ft	No
14	Room	11'3" x 14'9"	166 sq. ft	Yes
15	Bedroom	14'9" x 11'9"	174 sq. ft	Yes
16	Family Room	31'8" x 14'9"	485 sq. ft	Yes
17	Foyer	11'0" x 8'2"	74 sq. ft	Yes
18	Porch	12'6" x 7'10"	98 sq. ft	No
19	Hall	3'10" x 6'6"	25 sq. ft	Yes
20	WC	4'9" x 10'3"	45 sq. ft	Yes
21	Electrical Room	6'6" x 4'6"	29 sq. ft	No
22	Sunroom	9'1" x 25'6"	207 sq. ft	No

5329 Seagrove Plank Road, Asheboro, Randolph County, North Carolina, United States, 27205

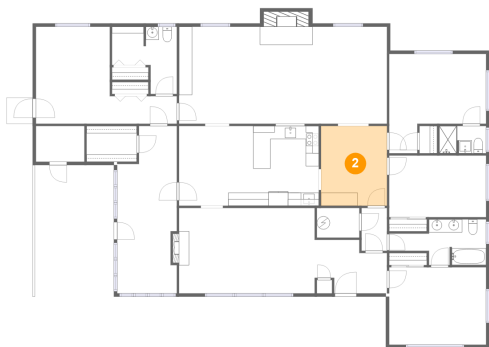
1 Floor 1 - Laundry



Dimensions: 5'2" x 5'10"  
Area: 29 sq. ft  
Counted as living area: Yes

Heated: Yes  
Finished: Yes  
Enclosed: Yes  
Contiguous: Yes  
Permitted: Yes  
Wet space: No  
Addition: No  
Conversion: No

2 Floor 1 - Dining Room

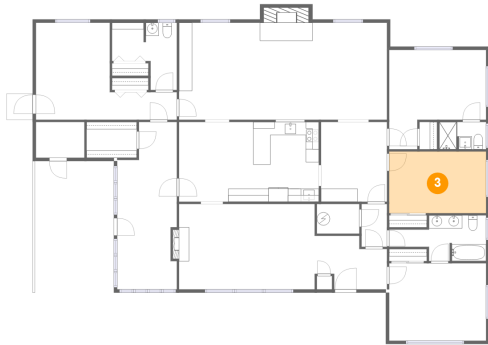


Dimensions: 10'0" x 12'1"  
Area: 122 sq. ft  
Counted as living area: Yes

Heated: Yes  
Finished: Yes  
Enclosed: Yes  
Contiguous: Yes  
Permitted: Yes  
Wet space: No  
Addition: No  
Conversion: No

5329 Seagrove Plank Road, Asheboro, Randolph County, North Carolina, United States, 27205

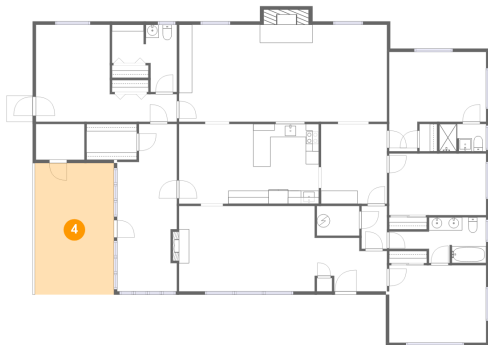
### 3 Floor 1 - Bedroom



Dimensions: 14'9" x 9'5"  
Area: 138 sq. ft  
Counted as living area: Yes

Heated: Yes  
Finished: Yes  
Enclosed: Yes  
Contiguous: Yes  
Permitted: Yes  
Wet space: No  
Addition: No  
Conversion: No

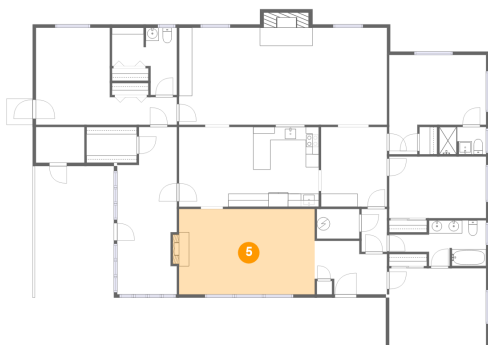
### 4 Floor 1 - Covered Patio



Dimensions: 12'0" x 20'0"  
Area: 241 sq. ft  
Counted as living area: No

Heated: No  
Finished: Yes  
Enclosed: No  
Contiguous: Yes  
Permitted: Yes  
Wet space: No  
Addition: No  
Conversion: No

### 5 Floor 1 - Living Room

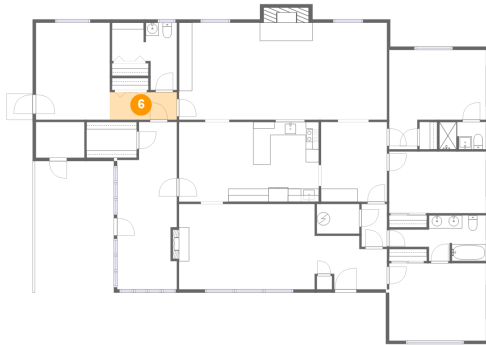


Dimensions: 20'8" x 13'0"  
Area: 273 sq. ft  
Counted as living area: Yes

Heated: Yes  
Finished: Yes  
Enclosed: Yes  
Contiguous: Yes  
Permitted: Yes  
Wet space: No  
Addition: No  
Conversion: No

5329 Seagrove Plank Road, Asheboro, Randolph County, North Carolina, United States, 27205

## 6 Floor 1 - Hall



Dimensions: 10'2" x 4'2"  
Area: 43 sq. ft  
Counted as living area: Yes

Heated: Yes  
Finished: Yes  
Enclosed: Yes  
Contiguous: Yes  
Permitted: Yes  
Wet space: No  
Addition: No  
Conversion: No

## 7 Floor 1 - Bedroom



Dimensions: 14'9" x 15'1"  
Area: 176 sq. ft  
Counted as living area: Yes

Heated: Yes  
Finished: Yes  
Enclosed: Yes  
Contiguous: Yes  
Permitted: Yes  
Wet space: No  
Addition: No  
Conversion: No

## 8 Floor 1 - Bath

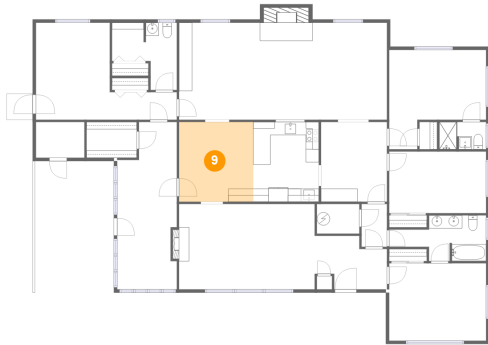


Dimensions: 7'1" x 4'2"  
Area: 29 sq. ft  
Counted as living area: Yes

Heated: Yes  
Finished: Yes  
Enclosed: Yes  
Contiguous: Yes  
Permitted: Yes  
Wet space: Yes  
Addition: No  
Conversion: No

5329 Seagrove Plank Road, Asheboro, Randolph County, North Carolina, United States, 27205

## 9 Floor 1 - Breakfast Nook



Dimensions: 11'4" x 12'2"  
Area: 137 sq. ft  
Counted as living area: Yes

Heated: Yes  
Finished: Yes  
Enclosed: Yes  
Contiguous: Yes  
Permitted: Yes  
Wet space: No  
Addition: No  
Conversion: No

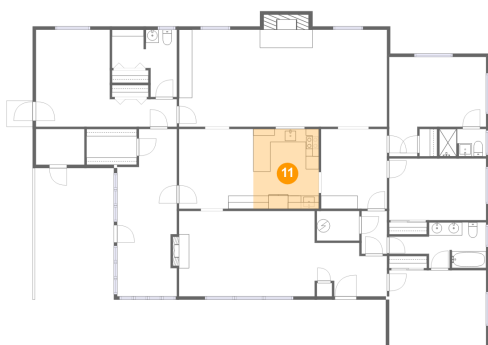
## 10 Floor 1 - Room



Dimensions: 7'5" x 5'5"  
Area: 40 sq. ft  
Counted as living area: No

Heated: No  
Finished: No  
Enclosed: Yes  
Contiguous: No  
Permitted: Yes  
Wet space: No  
Addition: No  
Conversion: No

## 11 Floor 1 - Kitchen

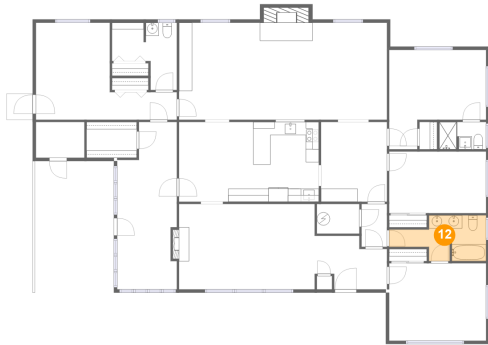


Dimensions: 10'0" x 12'1"  
Area: 121 sq. ft  
Counted as living area: Yes

Heated: Yes  
Finished: Yes  
Enclosed: Yes  
Contiguous: Yes  
Permitted: Yes  
Wet space: No  
Addition: No  
Conversion: No

5329 Seagrove Plank Road, Asheboro, Randolph County, North Carolina, United States, 27205

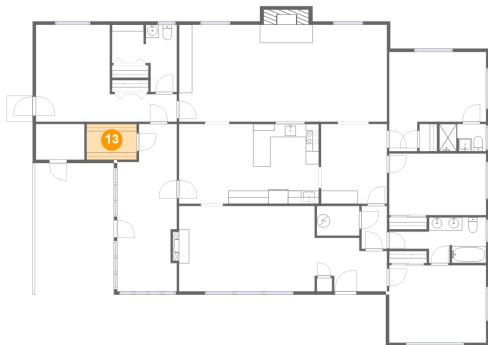
## 12 Floor 1 - Bath



Dimensions: 14'9" x 6'11"  
Area: 75 sq. ft  
Counted as living area: Yes

Heated: Yes  
Finished: Yes  
Enclosed: Yes  
Contiguous: Yes  
Permitted: Yes  
Wet space: Yes  
Addition: No  
Conversion: No

## 13 Floor 1 - Room



Dimensions: 7'7" x 5'5"  
Area: 42 sq. ft  
Counted as living area: No

Heated: No  
Finished: No  
Enclosed: Yes  
Contiguous: Yes  
Permitted: Yes  
Wet space: No  
Addition: No  
Conversion: No

## 14 Floor 1 - Room



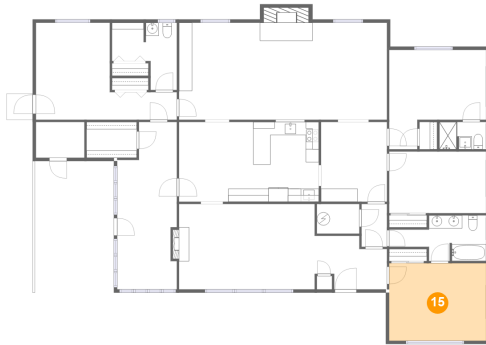
Dimensions: 11'3" x 14'9"  
Area: 166 sq. ft  
Counted as living area: Yes

Heated: Yes  
Finished: Yes  
Enclosed: Yes  
Contiguous: Yes  
Permitted: Yes  
Wet space: No  
Addition: No  
Conversion: No



5329 Seagrove Plank Road, Asheboro, Randolph County, North Carolina, United States, 27205

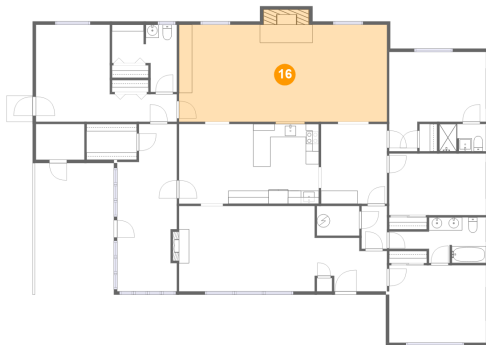
### 15 Floor 1 - Bedroom



Dimensions: 14'9" x 11'9"  
Area: 174 sq. ft  
Counted as living area: Yes

Heated: Yes  
Finished: Yes  
Enclosed: Yes  
Contiguous: Yes  
Permitted: Yes  
Wet space: No  
Addition: No  
Conversion: No

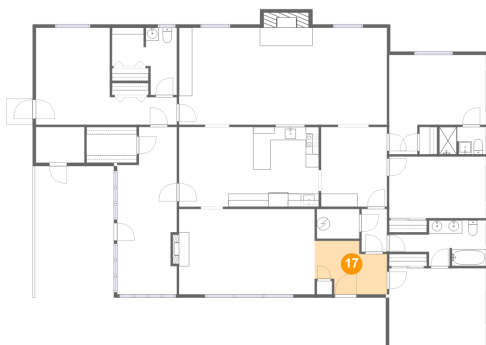
### 16 Floor 1 - Family Room



Dimensions: 31'8" x 14'9"  
Area: 485 sq. ft  
Counted as living area: Yes

Heated: Yes  
Finished: Yes  
Enclosed: Yes  
Contiguous: Yes  
Permitted: Yes  
Wet space: No  
Addition: No  
Conversion: No

### 17 Floor 1 - Foyer

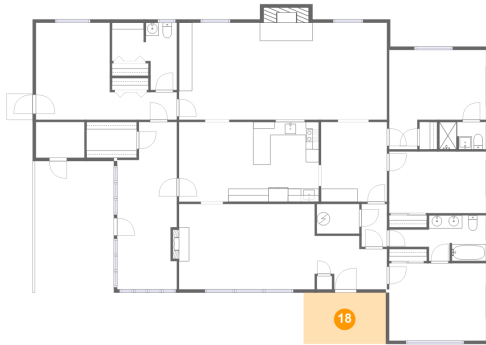


Dimensions: 11'0" x 8'2"  
Area: 74 sq. ft  
Counted as living area: Yes

Heated: Yes  
Finished: Yes  
Enclosed: Yes  
Contiguous: Yes  
Permitted: Yes  
Wet space: No  
Addition: No  
Conversion: No

5329 Seagrove Plank Road, Asheboro, Randolph County, North Carolina, United States, 27205

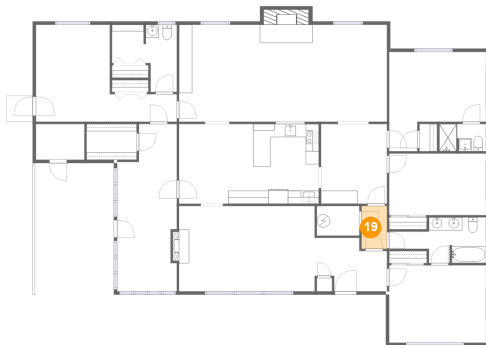
### 18 Floor 1 - Porch



Dimensions: 12'6" x 7'10"  
Area: 98 sq. ft  
Counted as living area: No

Heated: No  
Finished: Yes  
Enclosed: No  
Contiguous: Yes  
Permitted: Yes  
Wet space: No  
Addition: No  
Conversion: No

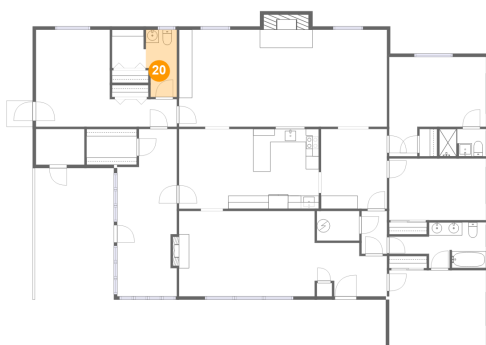
### 19 Floor 1 - Hall



Dimensions: 3'10" x 6'6"  
Area: 25 sq. ft  
Counted as living area: Yes

Heated: Yes  
Finished: Yes  
Enclosed: Yes  
Contiguous: Yes  
Permitted: Yes  
Wet space: No  
Addition: No  
Conversion: No

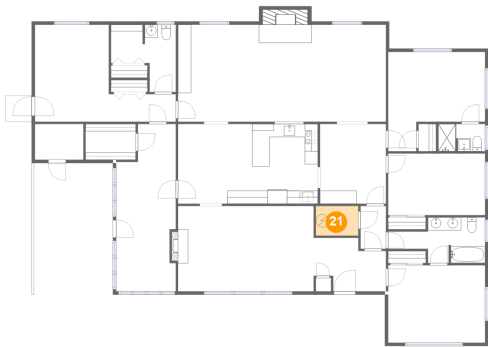
### 20 Floor 1 - WC



Dimensions: 4'9" x 10'3"  
Area: 45 sq. ft  
Counted as living area: Yes

Heated: Yes  
Finished: Yes  
Enclosed: Yes  
Contiguous: Yes  
Permitted: Yes  
Wet space: Yes  
Addition: No  
Conversion: No

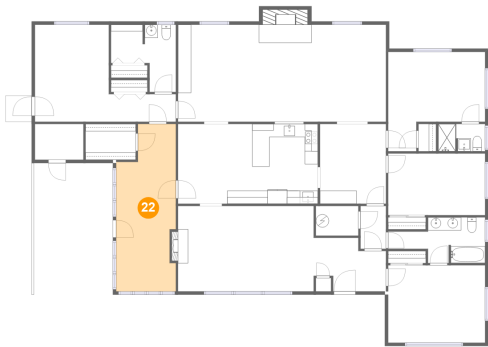
21 Floor 1 - Electrical Room



Dimensions: 6'6" x 4'6"  
Area: 29 sq. ft  
Counted as living area: No

Heated: No  
Finished: No  
Enclosed: Yes  
Contiguous: Yes  
Permitted: Yes  
Wet space: No  
Addition: No  
Conversion: No

22 Floor 1 - Sunroom



Dimensions: 9'1" x 25'6"  
Area: 207 sq. ft  
Counted as living area: No

Heated: No  
Finished: Yes  
Enclosed: Yes  
Contiguous: Yes  
Permitted: Yes  
Wet space: No  
Addition: No  
Conversion: No