



Home report


Pronghorn Rd,Spearfish,SD,US




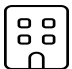
Property summary


 **1** Garages


 **2** Bedrooms

 **2** Bathrooms

 **0** Half baths

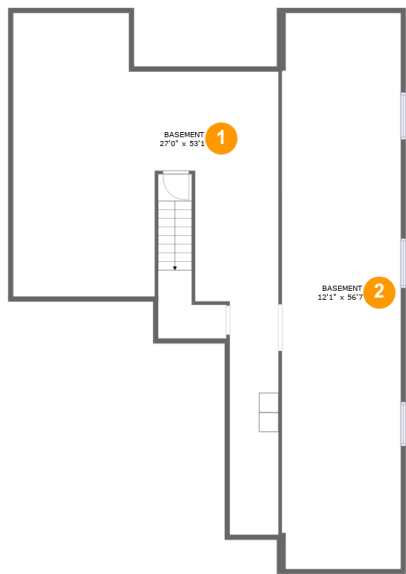
 **2** Floors

 **1,771** Gross living area sqft

 **4,120** Total sqft

Home report

Pronghorn Rd,Spearfish,SD,US



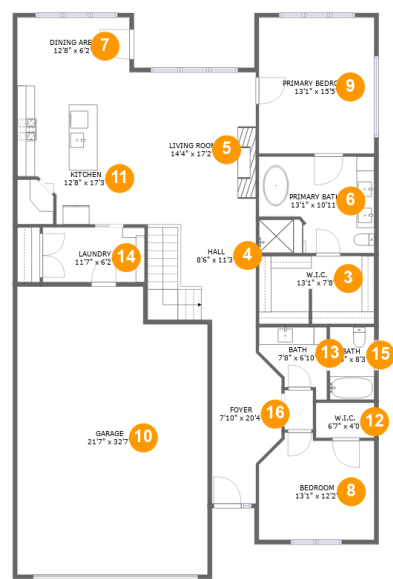
Room dimensions

Floor 1 Total sqft: 1646 Living area: 0

#		Max Dimensions	sqft	Included
1	Basement	27'0" x 53'1"	759 sq. ft	No
2	Basement	12'1" x 56'7"	686 sq. ft	No

Home report

Pronghorn Rd,Spearfish,SD,US



Room dimensions

Floor 2 Total sqft: 2474 Living area: 1771

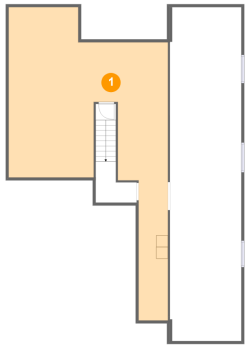
#		Max Dimensions	sqft	Included
3	W.I.C.	13'1" x 7'8"	99 sq. ft	Yes
4	Hall	8'6" x 11'3"	135 sq. ft	Yes
5	Living Room	14'4" x 17'2"	246 sq. ft	Yes
6	Primary Bath	13'1" x 10'11"	141 sq. ft	Yes
7	Dining Area	12'8" x 6'2"	79 sq. ft	Yes
8	Bedroom	13'1" x 12'2"	146 sq. ft	Yes
9	Primary Bedroom	13'1" x 15'5"	201 sq. ft	Yes
10	Garage	21'7" x 32'7"	672 sq. ft	No
11	Kitchen	12'8" x 17'3"	197 sq. ft	Yes
12	W.I.C.	6'7" x 4'0"	26 sq. ft	Yes
13	Bath	7'8" x 6'10"	44 sq. ft	Yes

Home report

Pronghorn Rd,Spearfish,SD,US

#		Max Dimensions	sqft	Included
14	Laundry	11'7" x 6'2"	72 sq. ft	Yes
15	Bath	5'0" x 8'3"	41 sq. ft	Yes
16	Foyer	7'10" x 20'4"	129 sq. ft	Yes

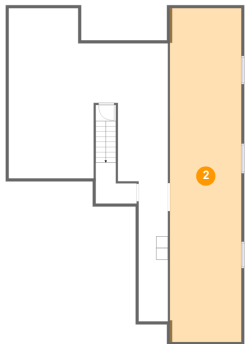
1 Floor 1 - Basement



Max Dimensions: 27'0" x 53'1"
Calculated Area: 759 sq. ft
Included: No

Heated: Yes
Finished: No
Enclosed: Yes
Contiguous: Yes
Permitted: Yes
Wet space: No
Addition: No
Conversion: No

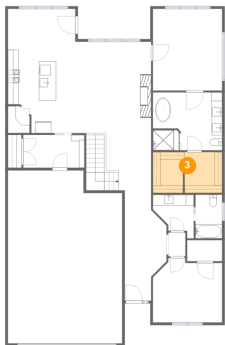
2 Floor 1 - Basement



Max Dimensions: 12'1" x 56'7"
Calculated Area: 686 sq. ft
Included: No

Heated: Yes
Finished: No
Enclosed: Yes
Contiguous: Yes
Permitted: Yes
Wet space: No
Addition: No
Conversion: No

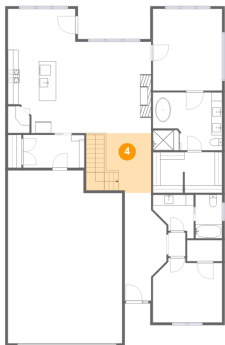
3 Floor 2 - W.I.C.



Max Dimensions: 13'1" x 7'8"
Calculated Area: 99 sq. ft
Included: Yes

Heated: Yes
Finished: Yes
Enclosed: Yes
Contiguous: Yes
Permitted: Yes
Wet space: No
Addition: No
Conversion: No

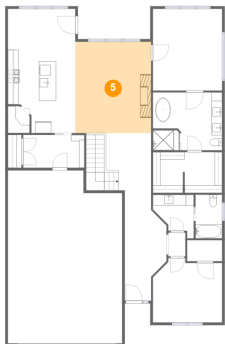
4 Floor 2 - Hall



Max Dimensions: 8'6" x 11'3"
Calculated Area: 135 sq. ft
Included: Yes

Heated: Yes
Finished: Yes
Enclosed: Yes
Contiguous: Yes
Permitted: Yes
Wet space: No
Addition: No
Conversion: No

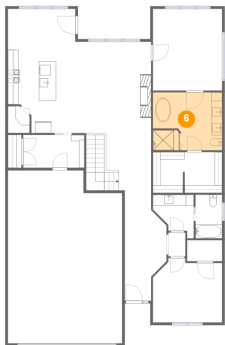
5 Floor 2 - Living Room



Max Dimensions: 14'4" x 17'2"
Calculated Area: 246 sq. ft
Included: Yes

Heated: Yes
Finished: Yes
Enclosed: Yes
Contiguous: Yes
Permitted: Yes
Wet space: No
Addition: No
Conversion: No

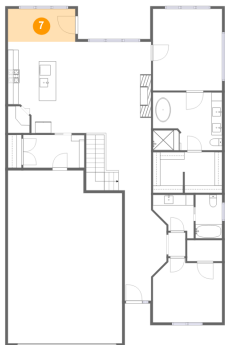
6 Floor 2 - Primary Bath



Max Dimensions: 13'1" x 10'11"
Calculated Area: 141 sq. ft
Included: Yes

Heated: Yes
Finished: Yes
Enclosed: Yes
Contiguous: Yes
Permitted: Yes
Wet space: Yes
Addition: No
Conversion: No

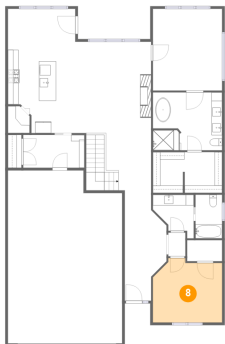
7 Floor 2 - Dining Area



Max Dimensions: 12'8" x 6'2"
Calculated Area: 79 sq. ft
Included: Yes

Heated: Yes
Finished: Yes
Enclosed: Yes
Contiguous: Yes
Permitted: Yes
Wet space: No
Addition: No
Conversion: No

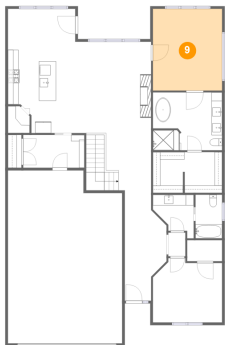
8 Floor 2 - Bedroom



Max Dimensions: 13'1" x 12'2"
Calculated Area: 146 sq. ft
Included: Yes

Heated: Yes
Finished: Yes
Enclosed: Yes
Contiguous: Yes
Permitted: Yes
Wet space: No
Addition: No
Conversion: No

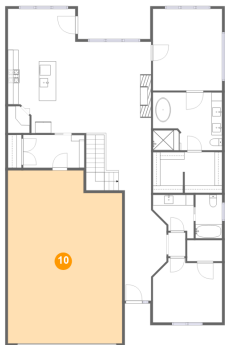
9 Floor 2 - Primary Bedroom



Max Dimensions: 13'1" x 15'5"
Calculated Area: 201 sq. ft
Included: Yes

Heated: Yes
Finished: Yes
Enclosed: Yes
Contiguous: Yes
Permitted: Yes
Wet space: No
Addition: No
Conversion: No

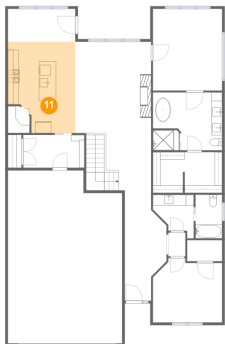
10 Floor 2 - Garage



Max Dimensions: 21'7" x 32'7"
Calculated Area: 672 sq. ft
Included: No

Heated: No
Finished: No
Enclosed: Yes
Contiguous: Yes
Permitted: Yes
Wet space: No
Addition: No
Conversion: No

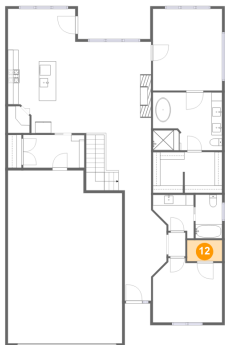
11 Floor 2 - Kitchen



Max Dimensions: 12'8" x 17'3"
Calculated Area: 197 sq. ft
Included: Yes

Heated: Yes
Finished: Yes
Enclosed: Yes
Contiguous: Yes
Permitted: Yes
Wet space: No
Addition: No
Conversion: No

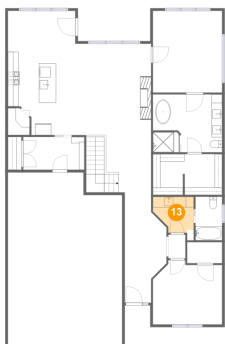
12 Floor 2 - W.I.C.



Max Dimensions: 6'7" x 4'0"
Calculated Area: 26 sq. ft
Included: Yes

Heated: Yes
Finished: Yes
Enclosed: Yes
Contiguous: Yes
Permitted: Yes
Wet space: No
Addition: No
Conversion: No

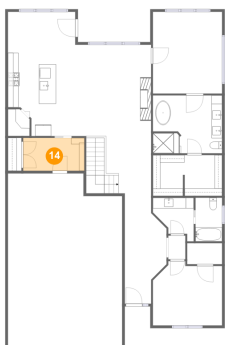
13 Floor 2 - Bath



Max Dimensions: 7'8" x 6'10"
Calculated Area: 44 sq. ft
Included: Yes

Heated: Yes
Finished: Yes
Enclosed: Yes
Contiguous: Yes
Permitted: Yes
Wet space: Yes
Addition: No
Conversion: No

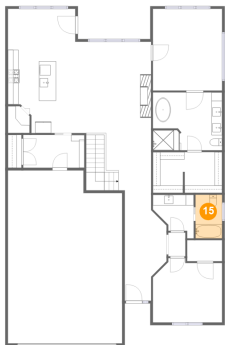
14 Floor 2 - Laundry



Max Dimensions: 11'7" x 6'2"
Calculated Area: 72 sq. ft
Included: Yes

Heated: Yes
Finished: Yes
Enclosed: Yes
Contiguous: Yes
Permitted: Yes
Wet space: No
Addition: No
Conversion: No

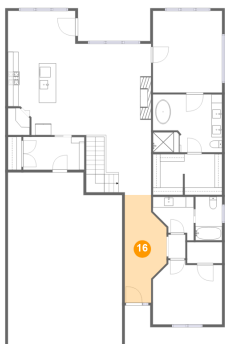
15 Floor 2 - Bath



Max Dimensions: 5'0" x 8'3"
Calculated Area: 41 sq. ft
Included: Yes

Heated: Yes
Finished: Yes
Enclosed: Yes
Contiguous: Yes
Permitted: Yes
Wet space: Yes
Addition: No
Conversion: No

16 Floor 2 - Foyer



Max Dimensions: 7'10" x 20'4"
Calculated Area: 129 sq. ft
Included: Yes

Heated: Yes
Finished: Yes
Enclosed: Yes
Contiguous: Yes
Permitted: Yes
Wet space: No
Addition: No
Conversion: No