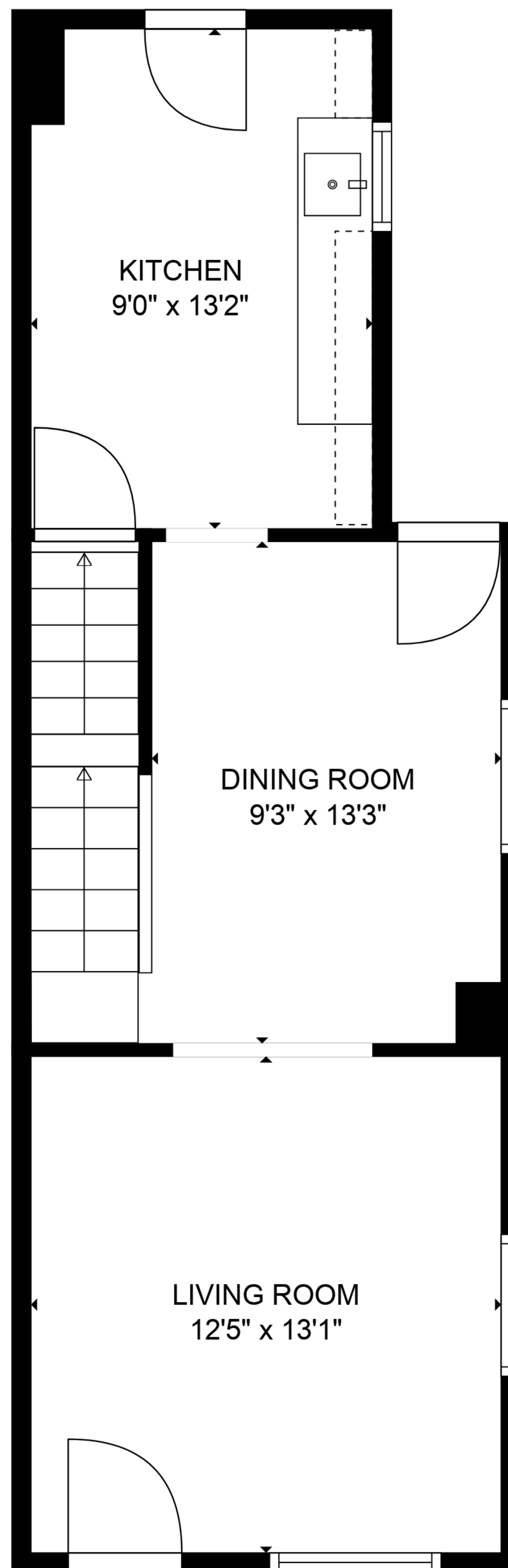


BASEMENT
12'5" x 40'2"

TOTAL: 961 sq. ft

BELOW GROUND: 0 sq. ft, FLOOR 2: 453 sq. ft, FLOOR 3: 499 sq. ft, FLOOR 4: 9 sq. ft
EXCLUDED AREAS: BASEMENT: 448 sq. ft, LOW CEILING: 54 sq. ft, ATTIC: 136 sq. ft
WALLS: 195 sq. ft

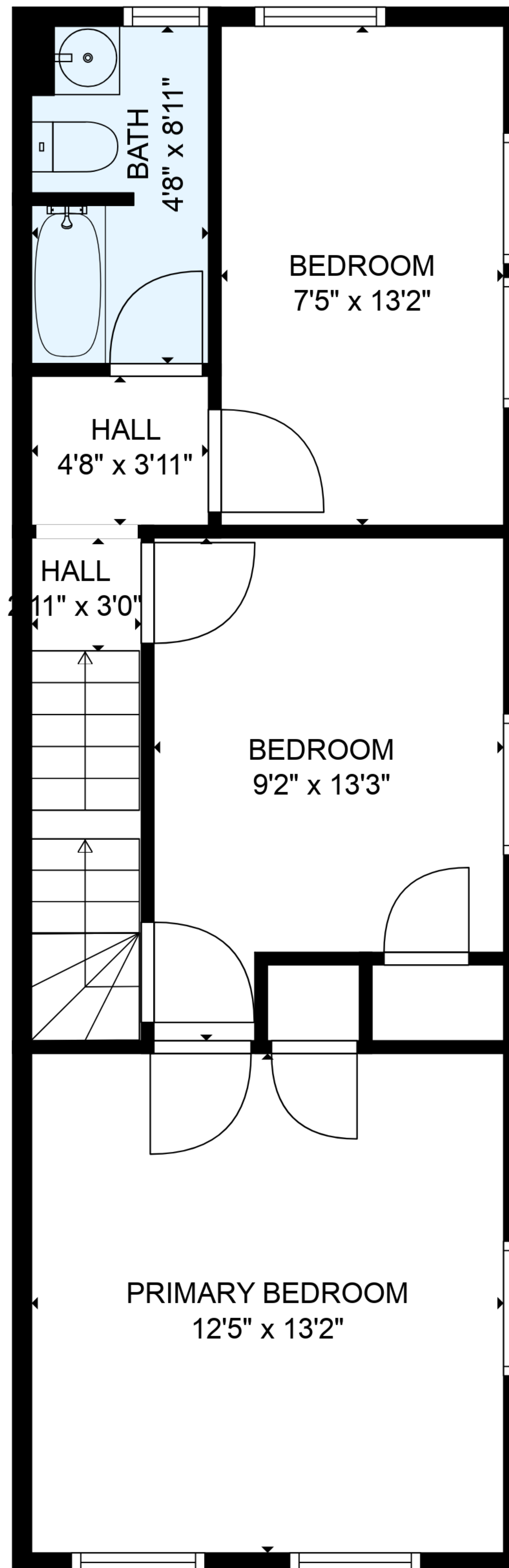
MEASUREMENTS ARE DEEMED RELIABLE BUT ARE NOT GUARANTEED.



TOTAL: 961 sq. ft

BELOW GROUND: 0 sq. ft, FLOOR 2: 453 sq. ft, FLOOR 3: 499 sq. ft, FLOOR 4: 9 sq. ft
EXCLUDED AREAS: BASEMENT: 448 sq. ft, LOW CEILING: 54 sq. ft, ATTIC: 136 sq. ft
WALLS: 195 sq. ft

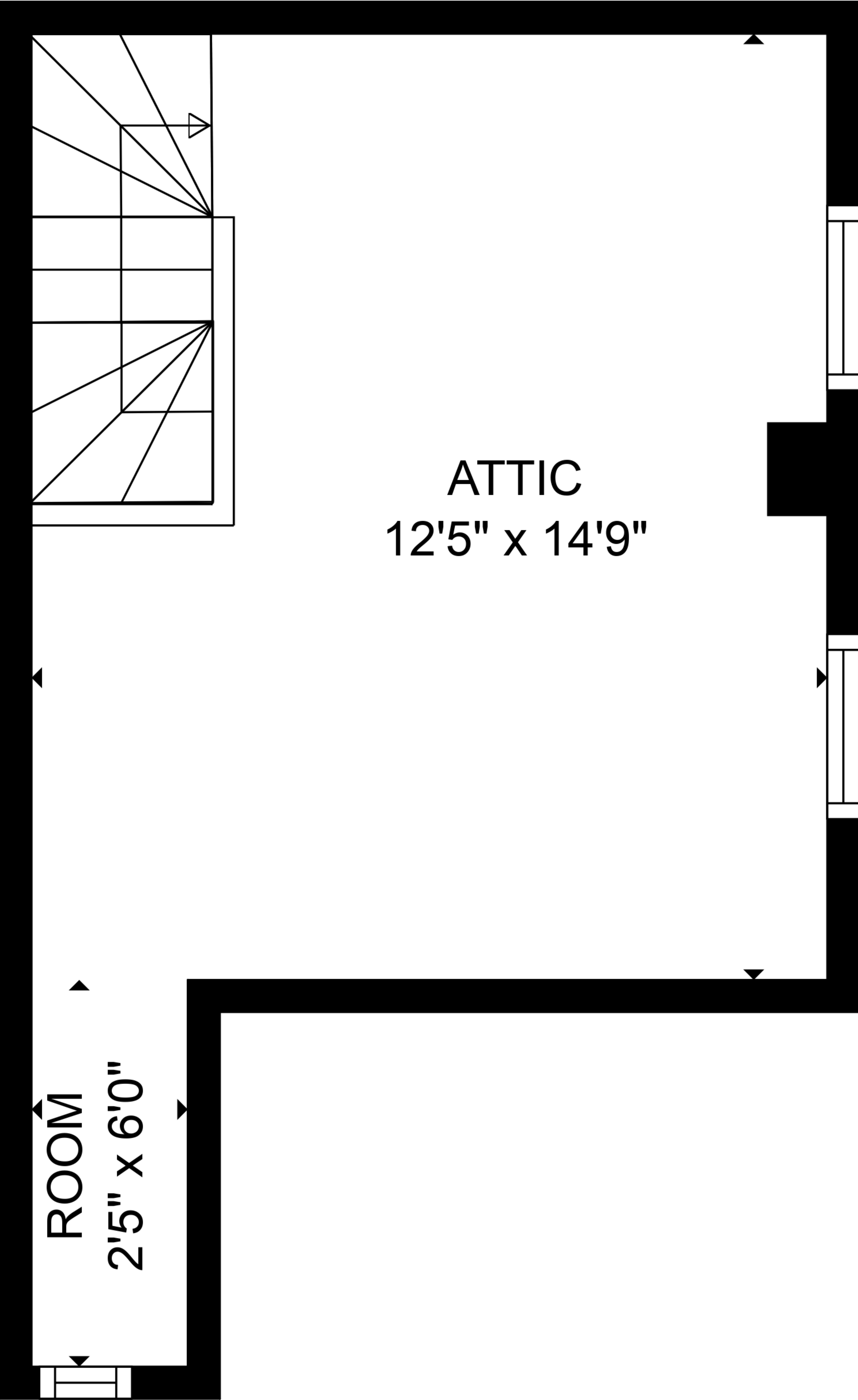
MEASUREMENTS ARE DEEMED RELIABLE BUT ARE NOT GUARANTEED.



TOTAL: 961 sq. ft

BELOW GROUND: 0 sq. ft, FLOOR 2: 453 sq. ft, FLOOR 3: 499 sq. ft, FLOOR 4: 9 sq. ft
EXCLUDED AREAS: BASEMENT: 448 sq. ft, LOW CEILING: 54 sq. ft, ATTIC: 136 sq. ft
WALLS: 195 sq. ft

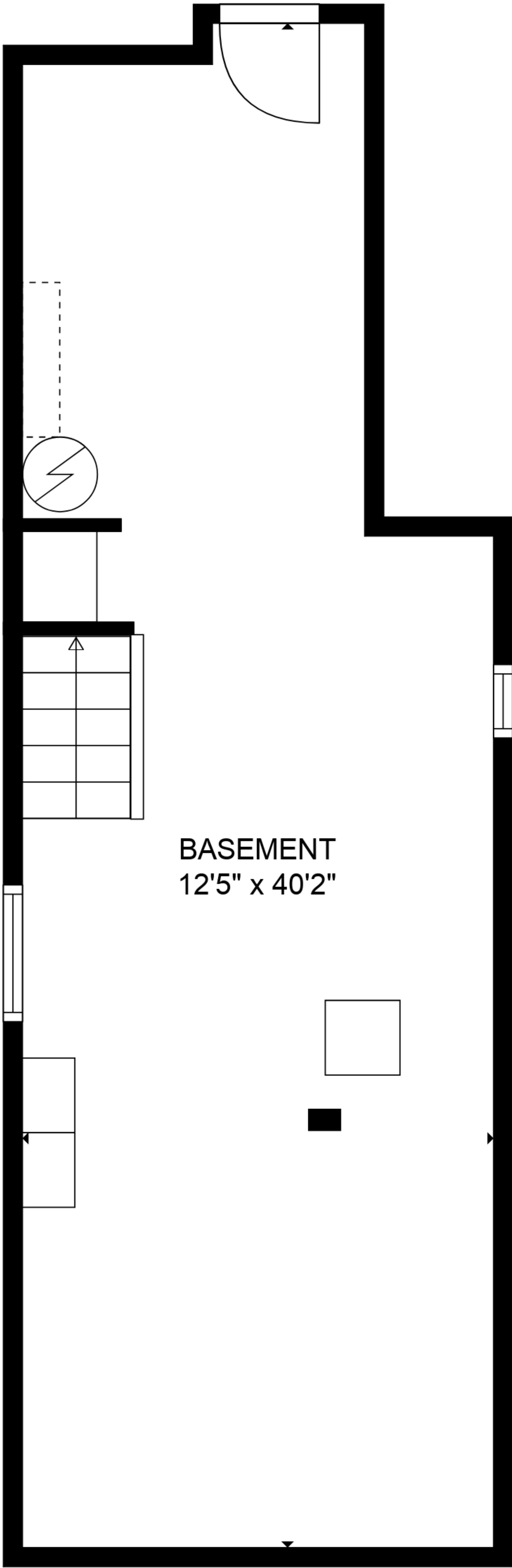
MEASUREMENTS ARE DEEMED RELIABLE BUT ARE NOT GUARANTEED.



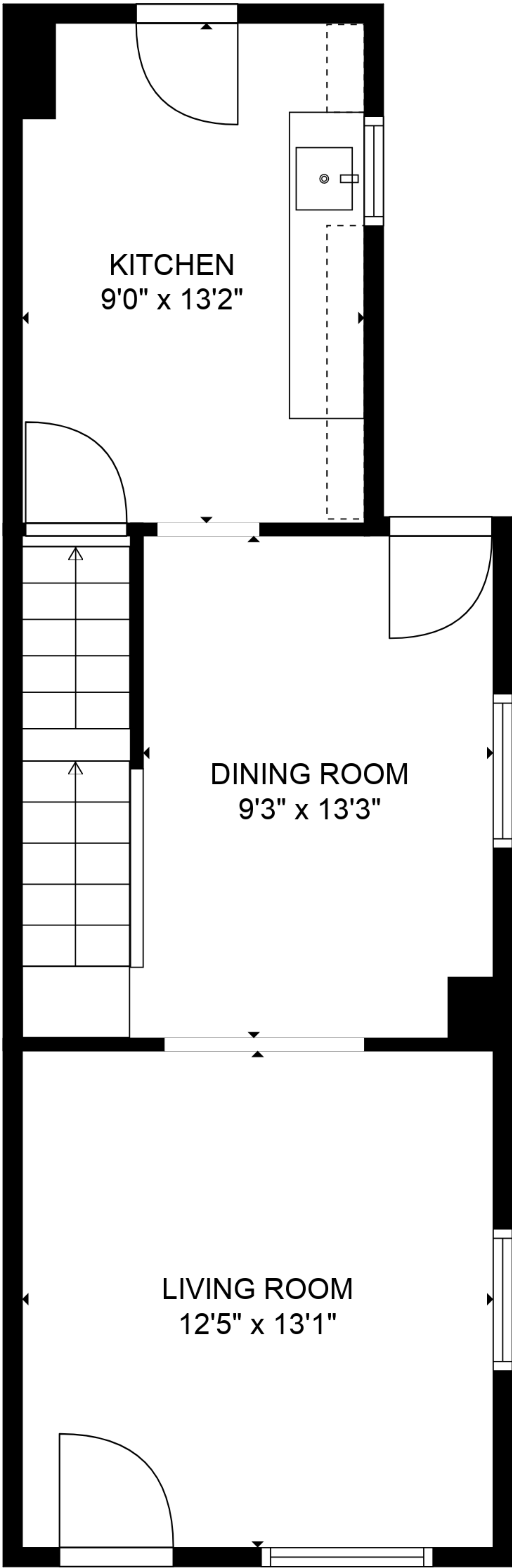
TOTAL: 961 sq. ft

BELOW GROUND: 0 sq. ft, FLOOR 2: 453 sq. ft, FLOOR 3: 499 sq. ft, FLOOR 4: 9 sq. ft
EXCLUDED AREAS: BASEMENT: 448 sq. ft, LOW CEILING: 54 sq. ft, ATTIC: 136 sq. ft
WALLS: 195 sq. ft

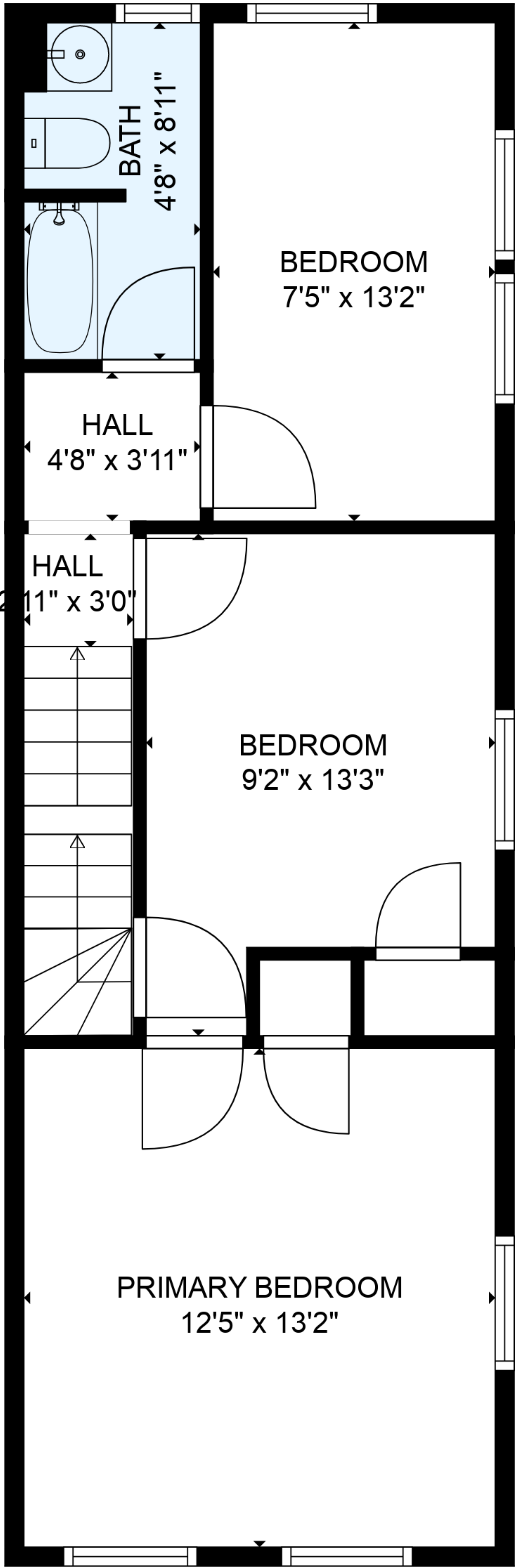
MEASUREMENTS ARE DEEMED RELIABLE BUT ARE NOT GUARANTEED.



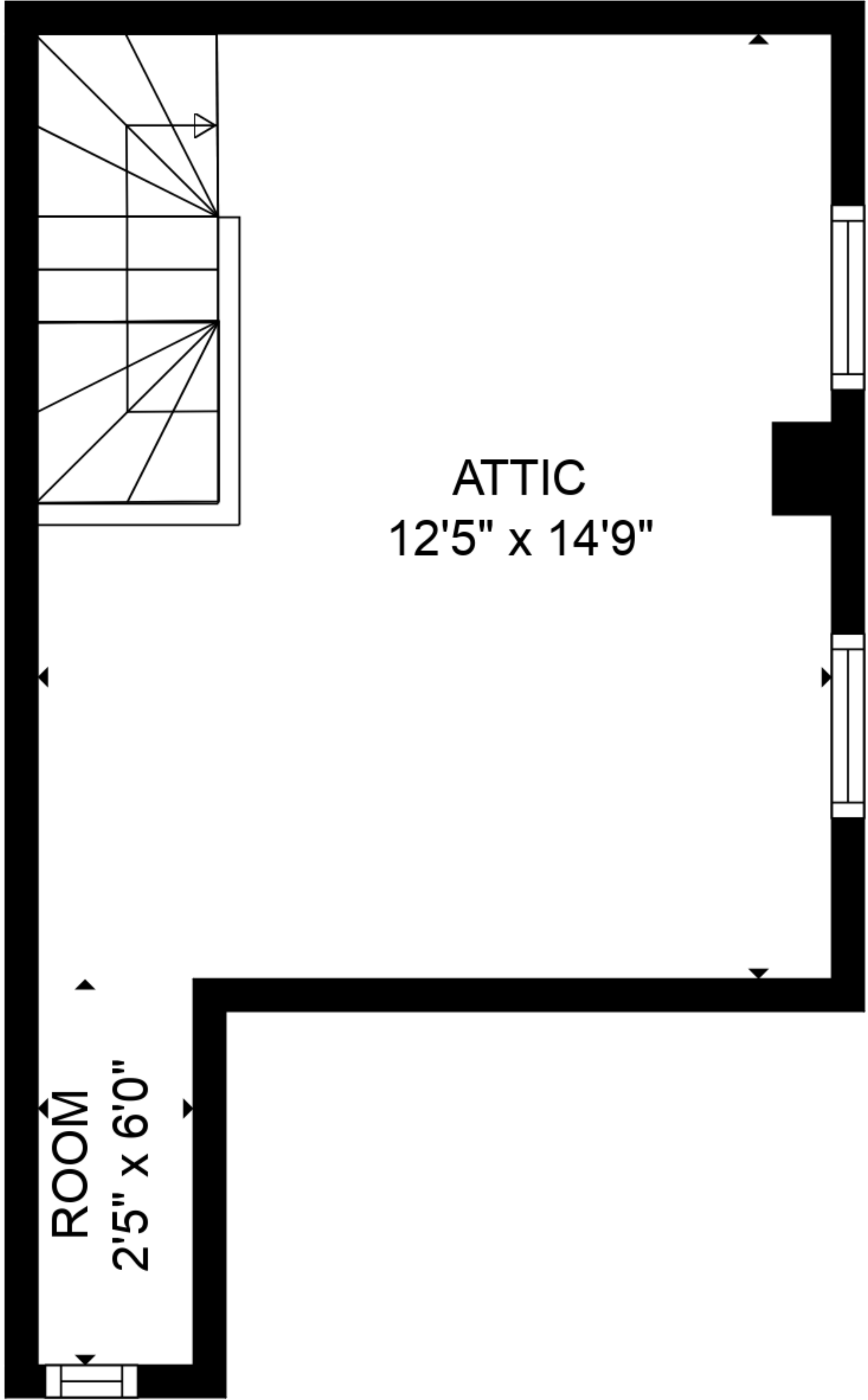
FLOOR 1



FLOOR 2



FLOOR 3



FLOOR 4

TOTAL: 961 sq. ft
BELOW GROUND: 0 sq. ft, FLOOR 2: 453 sq. ft, FLOOR 3: 499 sq. ft, FLOOR 4: 9 sq. ft
EXCLUDED AREAS: BASEMENT: 448 sq. ft, LOW CEILING: 54 sq. ft, ATTIC: 136 sq. ft
WALLS: 195 sq. ft

MEASUREMENTS ARE DEEMED RELIABLE BUT ARE NOT GUARANTEED.