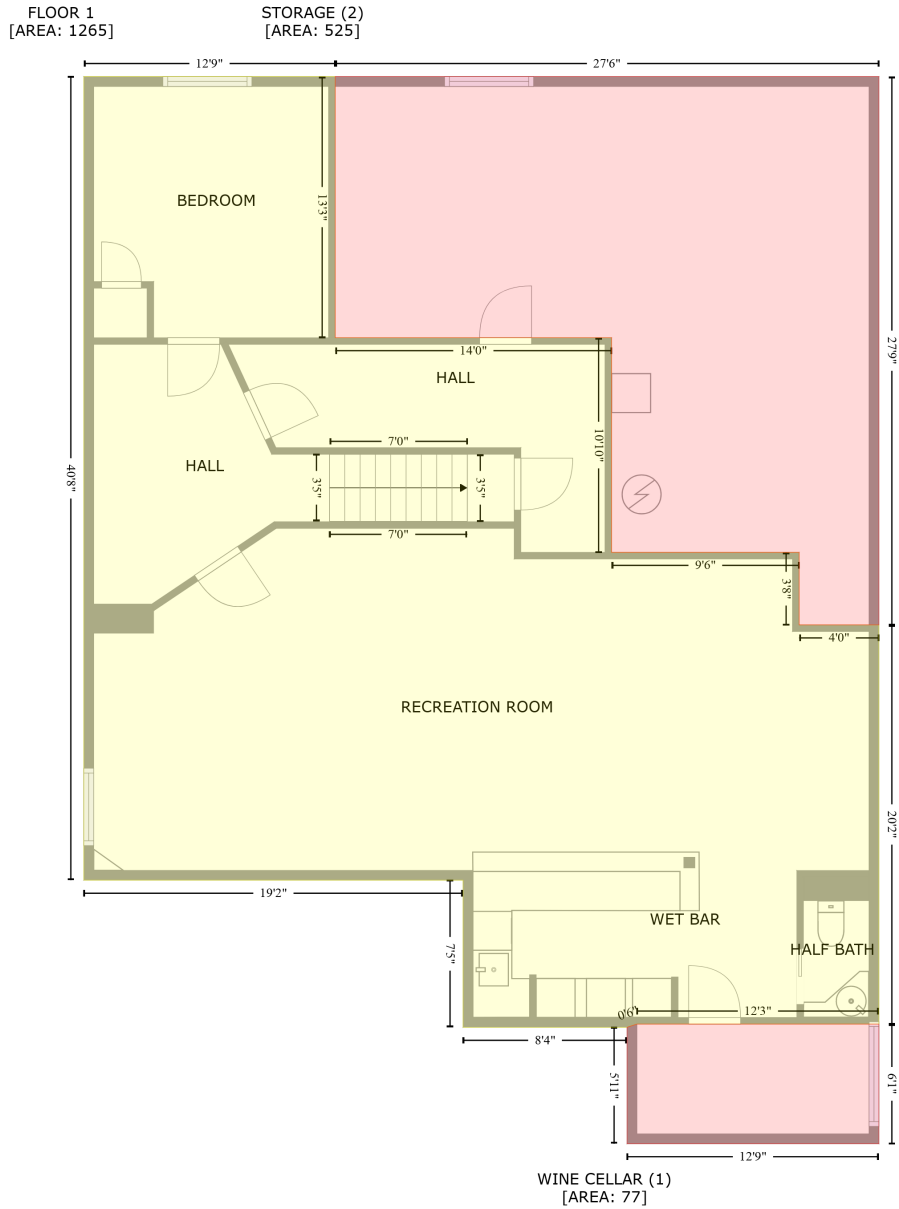


# 1532 Reeves Dr, Fort Collins, CO, US

Gross Living Area: 2089 sq. ft



Space	Area (sq. ft)	Calculation <small>Coordinate Polygon Area Algorithm using inches</small>
FLOOR 1 (Living area)	1265	$-\left((240.4 + 240.4) * (13 - 171.6) + (240.4 + 408.2) * (171.6 - 171.6) + (408.2 + 408.2) * (171.6 - 302.1) + (408.2 + 522) * (302.1 - 302.1) + (522 + 522) * (302.1 - 346.1) + (522 + 570.5) * (346.1 - 346.1) + (570.5 + 570.5) * (346.1 - 588.5) + (570.5 + 423.6) * (588.5 - 588.5) + (423.6 + 417.6) * (588.5 - 590.5) + (417.6 + 318) * (590.5 - 590.5) + (318 + 318) * (590.5 - 501.2) + (318 + 87.8) * (501.2 - 501.2) + (87.8 + 87.8) * (501.2 - 13) + (87.8 + 240.4) * (13 - 13)\right) * 0.5 * 0.00694$
WINE CELLAR	77	$-\left((570.5 + 570.5) * (588.5 - 661.2) + (570.5 + 417.6) * (661.2 - 661.2) + (417.6 + 417.6) * (661.2 - 661.2)\right) * 0.5 * 0.00694$

# 1532 Reeves Dr, Fort Collins, CO, US

Gross Living Area: 2089 sq. ft

Space	Area (sq. ft)	Calculation <small>Coordinate Polygon Area Algorithm using inches</small>
(Non-living area)		$590.5 + (417.6 + 423.6) * (590.5 - 588.5) + (423.6 + 570.5) * (588.5 - 588.5) * 0.5 * 0.00694$
STORAGE	525	$-((570.5 + 570.5) * (13 - 346.1) + (570.5 + 522) * (346.1 - 346.1) + (522 + 522) * (346.1 - 302.1) + (522 + 408.2) * (302.1 - 302.1) + (408.2 + 408.2) * (302.1 - 171.6) + (408.2 + 240.4) * (171.6 - 171.6) + (240.4 + 240.4) * (171.6 - 13) + (240.4 + 570.5) * (13 - 13)) * 0.5 * 0.00694$
(Non-living area)		



# 1532 Reeves Dr, Fort Collins, CO, US

Gross Living Area: 2089 sq. ft

Space	Area (sq. ft)	Calculation <small>Coordinate Polygon Area Algorithm using inches</small>
GARAGE (Non-living area)	389	$-((312.6 + 312.6) * (512.6 - 599.6) + (312.6 + 318.6) * (599.6 - 599.6) + (318.6 + 318.6) * (599.6 - 746.6) + (318.6 + 76.7) * (746.6 - 746.6) + (76.7 + 76.7) * (746.6 - 512.6) + (76.7 + 312.6) * (512.6 - 512.6)) * 0.5 * 0.00694$
Bay Window (Non-living area)	13	$-((559 + 527.8) * (679.6 - 700) + (527.8 + 468) * (700 - 700) + (468 + 436.8) * (700 - 679.6) + (436.8 + 559) * (679.6 - 679.6)) * 0.5 * 0.00694$