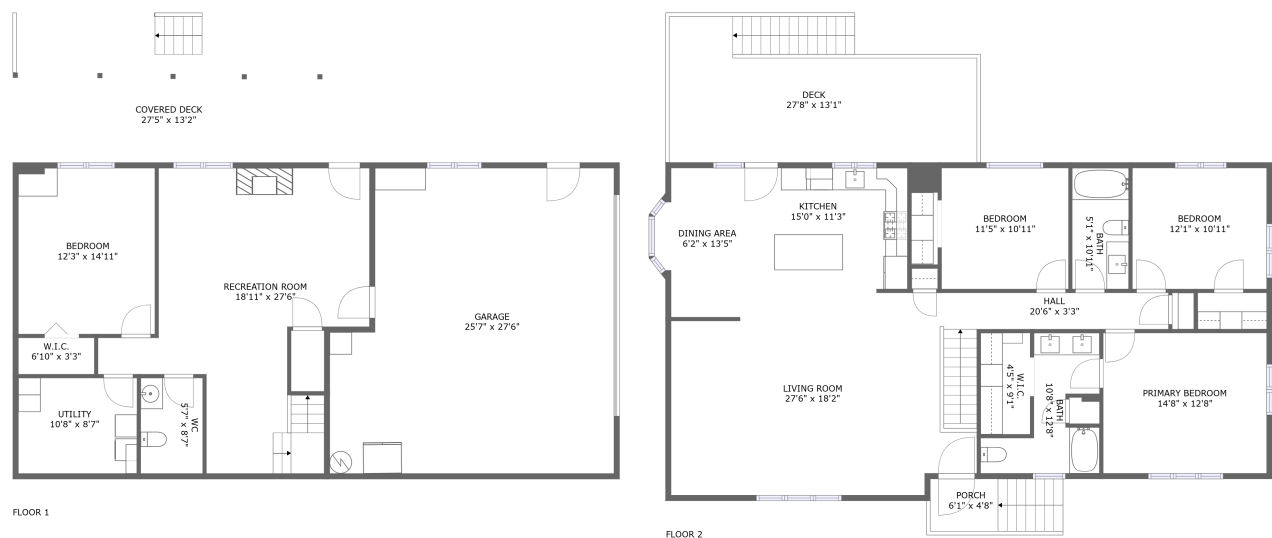


Home report

7207 Carriage Hills Drive, Roanoke, Roanoke County, Virginia,
United States, 24018



Total Area: 2472 sq. ft

Below Ground: 873 sq. ft, Floor 2: 1599 sq. ft

Excluded: Garage 679 sq. ft, Outdoor Deck Covered 247 sq. ft, Outdoor Porch 56 sq. ft, Outdoor Deck 318 sq. ft, Embeddedwindow 9 sq. ft

Property summary

 **2** Floors

 **4** Bedrooms

 **2** Bathrooms

Home report

**7207 Carriage Hills Drive, Roanoke, Roanoke County, Virginia,
United States, 24018**



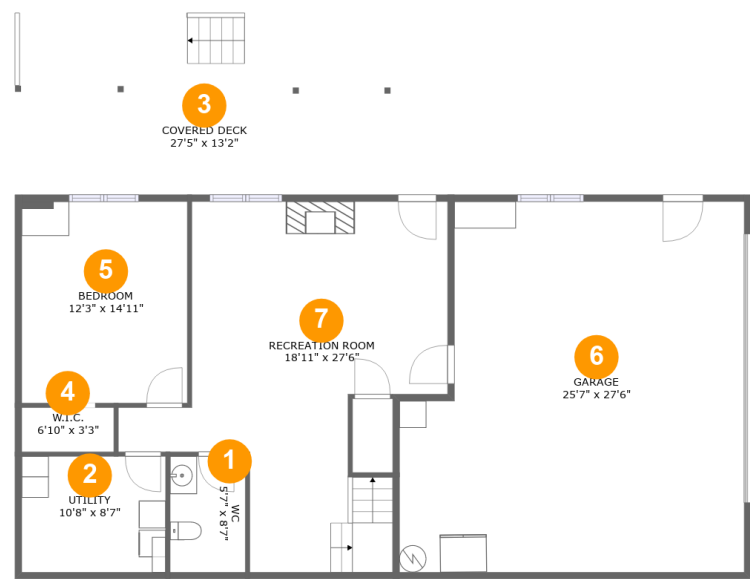
1
Half baths



1
Garages

Home report

7207 Carriage Hills Drive, Roanoke, Roanoke County, Virginia,
United States, 24018



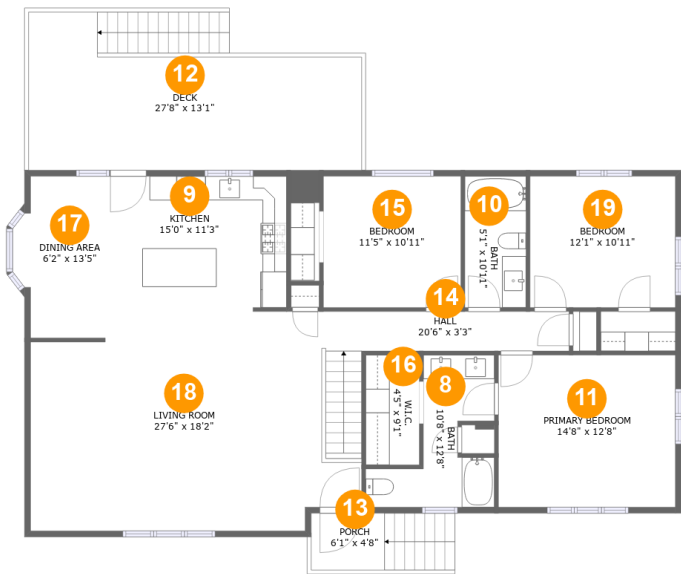
Room dimensions

Floor 1 Below ground Total:873sqft Excluded: 926sqft

#		Max Dimensions	sqft	Included
1	WC	5'7" x 8'7"	48 sq. ft	Yes
2	Utility	10'8" x 8'7"	92 sq. ft	Yes
3	Covered Deck	27'5" x 13'2"	247 sq. ft	No
4	W.I.C.	6'10" x 3'3"	22 sq. ft	Yes
5	Bedroom	12'3" x 14'11"	183 sq. ft	Yes
6	Garage	25'7" x 27'6"	641 sq. ft	No
7	Recreation Room	18'11" x 27'6"	426 sq. ft	Yes

Home report

7207 Carriage Hills Drive, Roanoke, Roanoke County, Virginia,
United States, 24018



Room dimensions

Floor 2 Total:1599sqft Excluded: 383sqft

#		Max Dimensions	sqft	Included
8	Bath	10'8" x 12'8"	80 sq. ft	Yes
9	Kitchen	15'0" x 11'3"	168 sq. ft	Yes
10	Bath	5'1" x 10'11"	55 sq. ft	Yes
11	Primary Bedroom	14'8" x 12'8"	185 sq. ft	Yes
12	Deck	27'8" x 13'1"	318 sq. ft	No
13	Porch	6'1" x 4'8"	56 sq. ft	No
14	Hall	20'6" x 3'3"	98 sq. ft	Yes
15	Bedroom	11'5" x 10'11"	124 sq. ft	Yes
16	W.I.C.	4'5" x 9'1"	41 sq. ft	Yes
17	Dining Area	6'2" x 13'5"	83 sq. ft	Yes
18	Living Room	27'6" x 18'2"	434 sq. ft	Yes

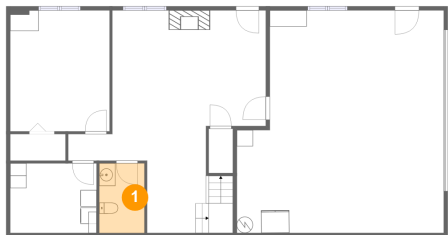
Home report

7207 Carriage Hills Drive, Roanoke, Roanoke County, Virginia,
United States, 24018

#		Max Dimensions	sqft	Included
19	Bedroom	12'1" x 10'11"	131 sq. ft	Yes

7207 Carriage Hills Drive, Roanoke, Roanoke County, Virginia,
United States, 24018

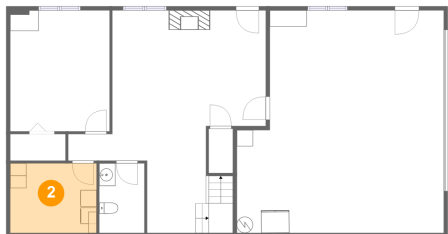
1 Floor 1 - WC



Max Dimensions: 5'7" x 8'7"
Calculated Area: 48 sq. ft
Included: Yes

Heated: Yes
Finished: Yes
Enclosed: Yes
Contiguous: Yes
Permitted: Yes
Wet space: Yes
Addition: No
Conversion: No

2 Floor 1 - Utility

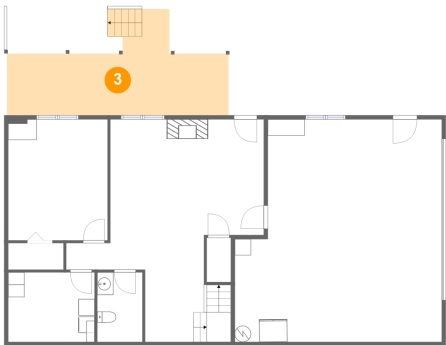


Max Dimensions: 10'8" x 8'7"
Calculated Area: 92 sq. ft
Included: Yes

Heated: Yes
Finished: Yes
Enclosed: Yes
Contiguous: Yes
Permitted: Yes
Wet space: No
Addition: No
Conversion: No

7207 Carriage Hills Drive, Roanoke, Roanoke County, Virginia,
United States, 24018

3 Floor 1 - Covered Deck



Max Dimensions: 27'5" x 13'2"
Calculated Area: 247 sq. ft
Included: No

Heated: No
Finished: Yes
Enclosed: No
Contiguous: Yes
Permitted: Yes
Wet space: No
Addition: No
Conversion: No

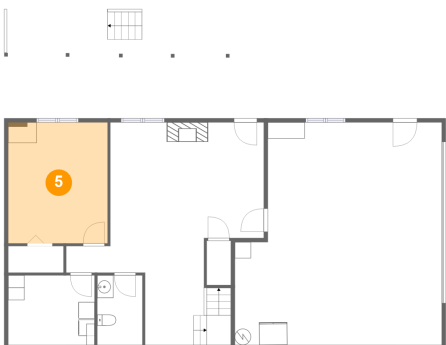
4 Floor 1 - W.I.C.



Max Dimensions: 6'10" x 3'3"
Calculated Area: 22 sq. ft
Included: Yes

Heated: Yes
Finished: Yes
Enclosed: Yes
Contiguous: Yes
Permitted: Yes
Wet space: No
Addition: No
Conversion: No

5 Floor 1 - Bedroom

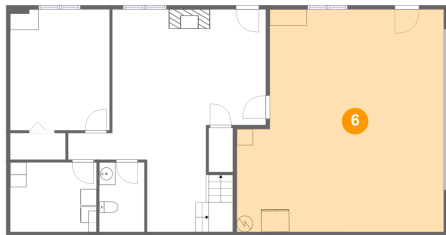
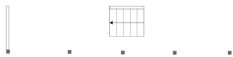


Max Dimensions: 12'3" x 14'11"
Calculated Area: 183 sq. ft
Included: Yes

Heated: Yes
Finished: Yes
Enclosed: Yes
Contiguous: Yes
Permitted: Yes
Wet space: No
Addition: No
Conversion: No

7207 Carriage Hills Drive, Roanoke, Roanoke County, Virginia,
United States, 24018

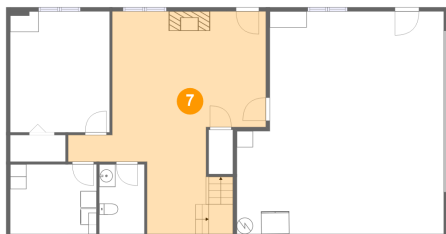
6 Floor 1 - Garage



Max Dimensions: 25'7" x 27'6"
Calculated Area: 641 sq. ft
Included: No

Heated: No
Finished: No
Enclosed: Yes
Contiguous: Yes
Permitted: Yes
Wet space: No
Addition: No
Conversion: No

7 Floor 1 - Recreation Room



Max Dimensions: 18'11" x 27'6"
Calculated Area: 426 sq. ft
Included: Yes

Heated: Yes
Finished: Yes
Enclosed: Yes
Contiguous: Yes
Permitted: Yes
Wet space: No
Addition: No
Conversion: No

8 Floor 2 - Bath



Max Dimensions: 10'8" x 12'8"
Calculated Area: 80 sq. ft
Included: Yes

Heated: Yes
Finished: Yes
Enclosed: Yes
Contiguous: Yes
Permitted: Yes
Wet space: Yes
Addition: No
Conversion: No

7207 Carriage Hills Drive, Roanoke, Roanoke County, Virginia,
United States, 24018

9 Floor 2 - Kitchen



Max Dimensions: 15'0" x 11'3"
Calculated Area: 168 sq. ft
Included: Yes

Heated: Yes
Finished: Yes
Enclosed: Yes
Contiguous: Yes
Permitted: Yes
Wet space: No
Addition: No
Conversion: No

10 Floor 2 - Bath



Max Dimensions: 5'1" x 10'11"
Calculated Area: 55 sq. ft
Included: Yes

Heated: Yes
Finished: Yes
Enclosed: Yes
Contiguous: Yes
Permitted: Yes
Wet space: Yes
Addition: No
Conversion: No

11 Floor 2 - Primary Bedroom



Max Dimensions: 14'8" x 12'8"
Calculated Area: 185 sq. ft
Included: Yes

Heated: Yes
Finished: Yes
Enclosed: Yes
Contiguous: Yes
Permitted: Yes
Wet space: No
Addition: No
Conversion: No

7207 Carriage Hills Drive, Roanoke, Roanoke County, Virginia,
United States, 24018

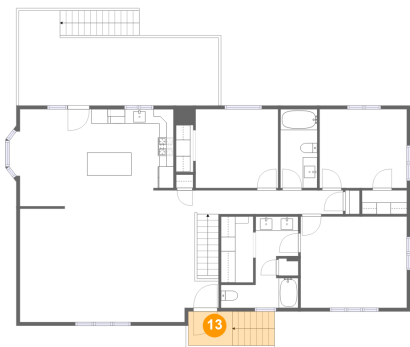
12 Floor 2 - Deck



Max Dimensions: 27'8" x 13'1"
Calculated Area: 318 sq. ft
Included: No

Heated: No
Finished: Yes
Enclosed: No
Contiguous: Yes
Permitted: Yes
Wet space: No
Addition: No
Conversion: No

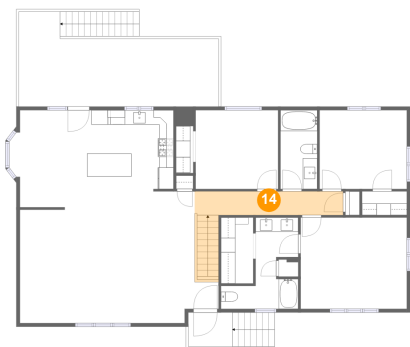
13 Floor 2 - Porch



Max Dimensions: 6'1" x 4'8"
Calculated Area: 56 sq. ft
Included: No

Heated: No
Finished: Yes
Enclosed: No
Contiguous: Yes
Permitted: Yes
Wet space: No
Addition: No
Conversion: No

14 Floor 2 - Hall



Max Dimensions: 20'6" x 3'3"
Calculated Area: 98 sq. ft
Included: Yes

Heated: Yes
Finished: Yes
Enclosed: Yes
Contiguous: Yes
Permitted: Yes
Wet space: No
Addition: No
Conversion: No

7207 Carriage Hills Drive, Roanoke, Roanoke County, Virginia,
United States, 24018

15 Floor 2 - Bedroom



Max Dimensions: 11'5" x 10'11"
Calculated Area: 124 sq. ft
Included: Yes

Heated: Yes
Finished: Yes
Enclosed: Yes
Contiguous: Yes
Permitted: Yes
Wet space: No
Addition: No
Conversion: No

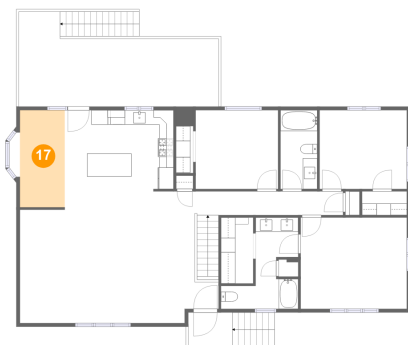
16 Floor 2 - W.I.C.



Max Dimensions: 4'5" x 9'1"
Calculated Area: 41 sq. ft
Included: Yes

Heated: Yes
Finished: Yes
Enclosed: Yes
Contiguous: Yes
Permitted: Yes
Wet space: No
Addition: No
Conversion: No

17 Floor 2 - Dining Area



Max Dimensions: 6'2" x 13'5"
Calculated Area: 83 sq. ft
Included: Yes

Heated: Yes
Finished: Yes
Enclosed: Yes
Contiguous: Yes
Permitted: Yes
Wet space: No
Addition: No
Conversion: No

7207 Carriage Hills Drive, Roanoke, Roanoke County, Virginia,
United States, 24018

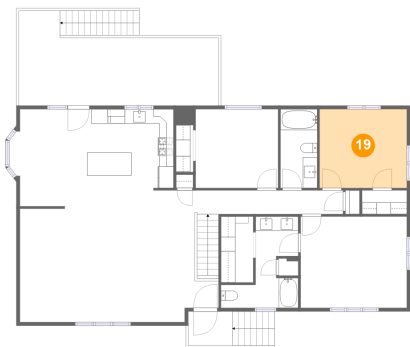
18 Floor 2 - Living Room



Max Dimensions: 27'6" x 18'2"
Calculated Area: 434 sq. ft
Included: Yes

Heated: Yes
Finished: Yes
Enclosed: Yes
Contiguous: Yes
Permitted: Yes
Wet space: No
Addition: No
Conversion: No

19 Floor 2 - Bedroom



Max Dimensions: 12'1" x 10'11"
Calculated Area: 131 sq. ft
Included: Yes

Heated: Yes
Finished: Yes
Enclosed: Yes
Contiguous: Yes
Permitted: Yes
Wet space: No
Addition: No
Conversion: No