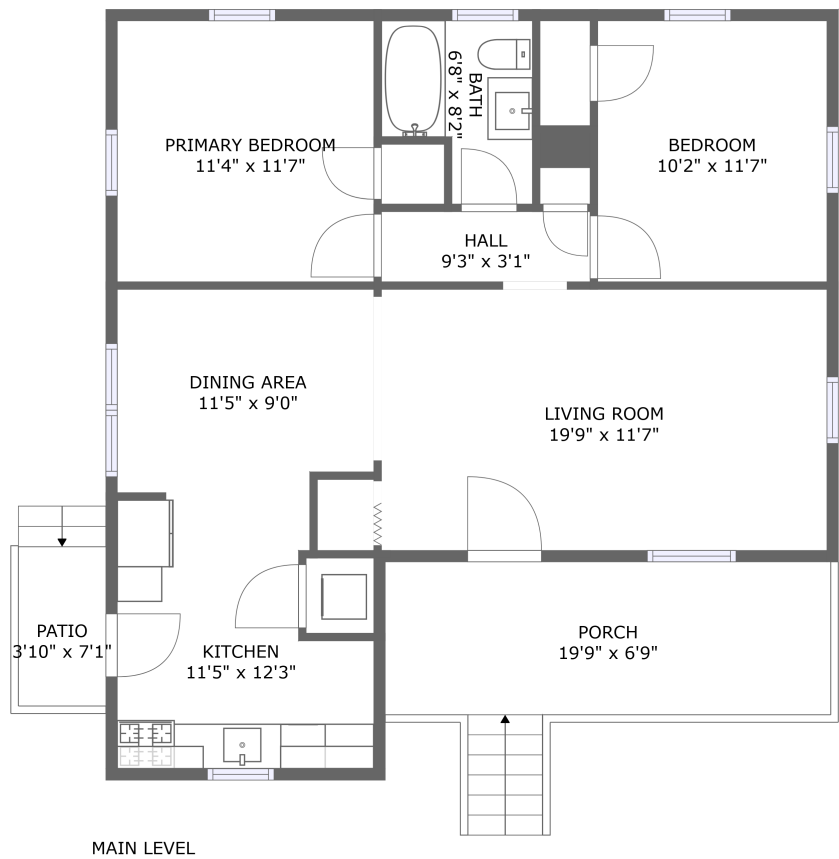




Home report


1129 Kerns Avenue Southwest, Wasena, Roanoke, Roanoke city,
Virginia, United States, 24015




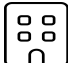
Property summary


**0**
Garages


**2**
Bedrooms

**1**
Bathrooms

**0**
Half baths

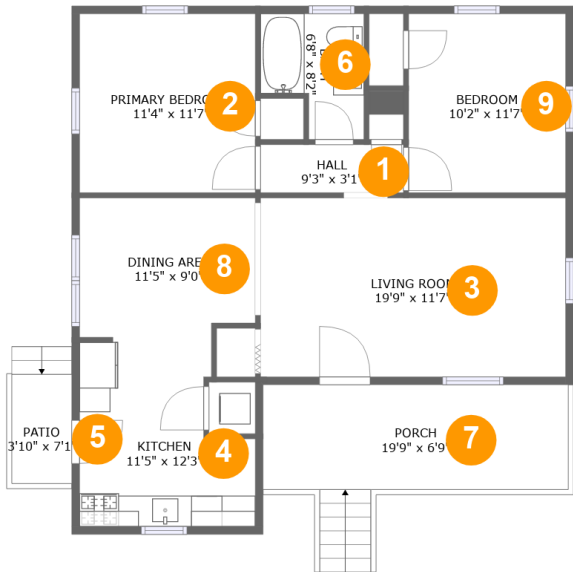
**1**
Floors

**915**
Gross living
area sqft

**1,077**
Total sqft

Home report

1129 Kerns Avenue Southwest, Wasena, Roanoke, Roanoke city,
Virginia, United States, 24015

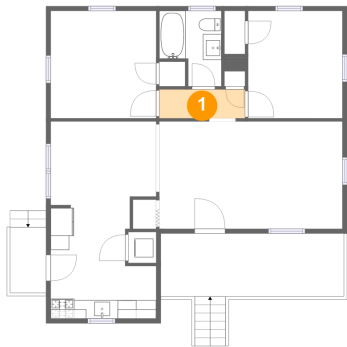


Room dimensions

Floor 1 Total sqft: 1077 Living area: 915

#		Max Dimensions	sqft	Included
1	Hall	9'3" x 3'1"	29 sq. ft	Yes
2	Primary Bedroom	11'4" x 11'7"	132 sq. ft	Yes
3	Living Room	19'9" x 11'7"	229 sq. ft	Yes
4	Kitchen	11'5" x 12'3"	118 sq. ft	Yes
5	Patio	3'10" x 7'1"	28 sq. ft	No
6	Bath	6'8" x 8'2"	45 sq. ft	Yes
7	Porch	19'9" x 6'9"	134 sq. ft	No
8	Dining Area	11'5" x 9'0"	100 sq. ft	Yes
9	Bedroom	10'2" x 11'7"	118 sq. ft	Yes

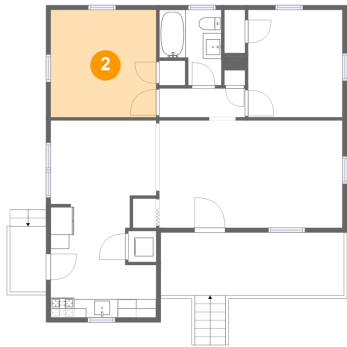
1 Floor 1 - Hall



Max Dimensions: 9'3" x 3'1"
Calculated Area: 29 sq. ft
Included: Yes

Heated: Yes
Finished: Yes
Enclosed: Yes
Contiguous: Yes
Permitted: Yes
Wet space: No
Addition: No
Conversion: No

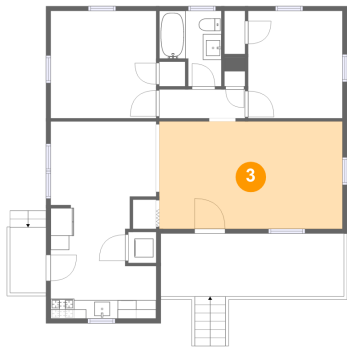
2 Floor 1 - Primary Bedroom



Max Dimensions: 11'4" x 11'7"
Calculated Area: 132 sq. ft
Included: Yes

Heated: Yes
Finished: Yes
Enclosed: Yes
Contiguous: Yes
Permitted: Yes
Wet space: No
Addition: No
Conversion: No

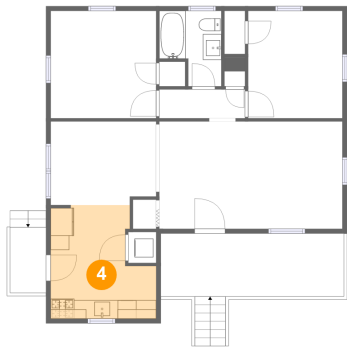
3 Floor 1 - Living Room



Max Dimensions: 19'9" x 11'7"
Calculated Area: 229 sq. ft
Included: Yes

Heated: Yes
Finished: Yes
Enclosed: Yes
Contiguous: Yes
Permitted: Yes
Wet space: No
Addition: No
Conversion: No

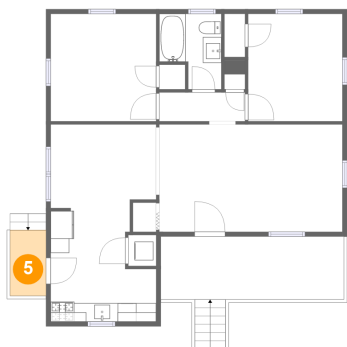
4 Floor 1 - Kitchen



Max Dimensions: 11'5" x 12'3"
Calculated Area: 118 sq. ft
Included: Yes

Heated: Yes
Finished: Yes
Enclosed: Yes
Contiguous: Yes
Permitted: Yes
Wet space: No
Addition: No
Conversion: No

5 Floor 1 - Patio

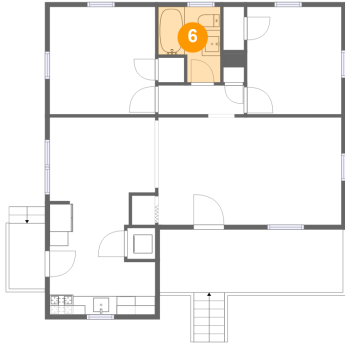


Max Dimensions: 3'10" x 7'1"
Calculated Area: 28 sq. ft
Included: No

Heated: No
Finished: Yes
Enclosed: No
Contiguous: Yes
Permitted: Yes
Wet space: No
Addition: No
Conversion: No

1129 Kerns Avenue Southwest, Wasena, Roanoke, Roanoke city,
Virginia, United States, 24015

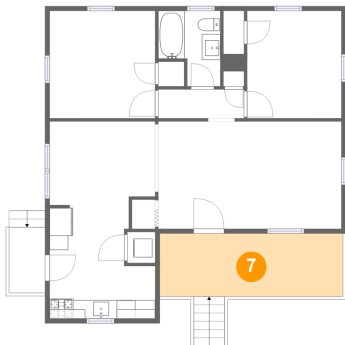
6 Floor 1 - Bath



Max Dimensions: 6'8" x 8'2"
Calculated Area: 45 sq. ft
Included: Yes

Heated: Yes
Finished: Yes
Enclosed: Yes
Contiguous: Yes
Permitted: Yes
Wet space: Yes
Addition: No
Conversion: No

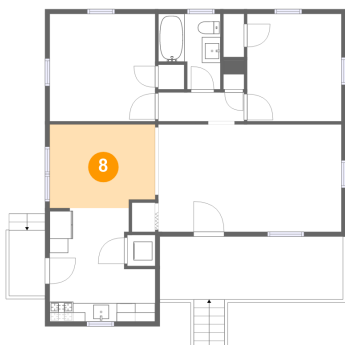
7 Floor 1 - Porch



Max Dimensions: 19'9" x 6'9"
Calculated Area: 134 sq. ft
Included: No

Heated: No
Finished: Yes
Enclosed: No
Contiguous: Yes
Permitted: Yes
Wet space: No
Addition: No
Conversion: No

8 Floor 1 - Dining Area

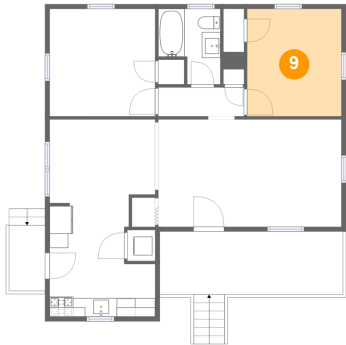


Max Dimensions: 11'5" x 9'0"
Calculated Area: 100 sq. ft
Included: Yes

Heated: Yes
Finished: Yes
Enclosed: Yes
Contiguous: Yes
Permitted: Yes
Wet space: No
Addition: No
Conversion: No

1129 Kerns Avenue Southwest, Wasena, Roanoke, Roanoke city,
Virginia, United States, 24015

9 Floor 1 - Bedroom



Max Dimensions: 10'2" x 11'7"
Calculated Area: 118 sq. ft
Included: Yes

Heated: Yes
Finished: Yes
Enclosed: Yes
Contiguous: Yes
Permitted: Yes
Wet space: No
Addition: No
Conversion: No