



Home report


4623 Southwest Garden Home Road, Multnomah, Portland,  
Multnomah County, Oregon, United States, 97219





Property summary


 **0** Garages


 **2** Bedrooms

 **2** Bathrooms

 **0** Half baths

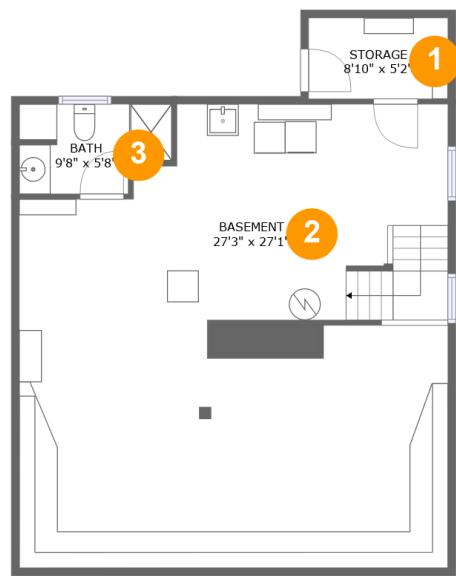
 **3** Floors

 **2,245** Gross living area sqft

 **3,279** Total sqft

Home report

4623 Southwest Garden Home Road, Multnomah, Portland,  
Multnomah County, Oregon, United States, 97219



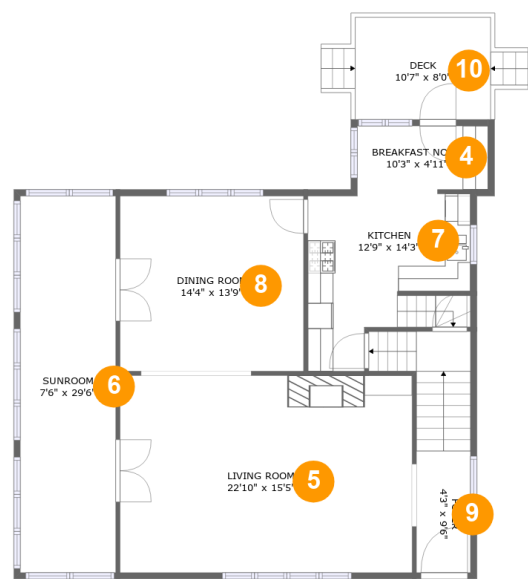
Room dimensions

Floor 1 Total sqft: 915    Living area: 0

#		Max Dimensions	sqft	Included
1	Storage	8'10" x 5'2"	46 sq. ft	No
2	Basement	27'3" x 27'1"	748 sq. ft	No
3	Bath	9'8" x 5'8"	49 sq. ft	No

Home report

4623 Southwest Garden Home Road, Multnomah, Portland,  
Multnomah County, Oregon, United States, 97219



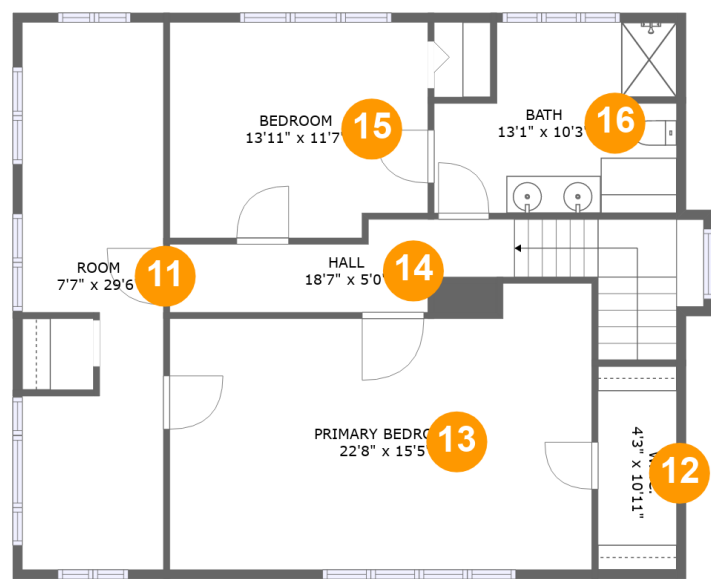
Room dimensions

Floor 2 Total sqft: 1251    Living area: 1166

#		Max Dimensions	sqft	Included
4	Breakfast Nook	10'3" x 4'11"	51 sq. ft	Yes
5	Living Room	22'10" x 15'5"	353 sq. ft	Yes
6	Sunroom	7'6" x 29'6"	220 sq. ft	Yes
7	Kitchen	12'9" x 14'3"	149 sq. ft	Yes
8	Dining Room	14'4" x 13'9"	197 sq. ft	Yes
9	Foyer	4'3" x 9'6"	91 sq. ft	Yes
10	Deck	10'7" x 8'0"	85 sq. ft	No

Home report

4623 Southwest Garden Home Road, Multnomah, Portland,  
Multnomah County, Oregon, United States, 97219



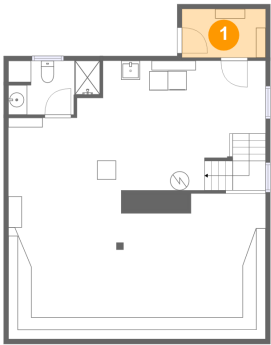
Room dimensions

Floor 3 Total sqft: 1113    Living area: 1079

#		Max Dimensions	sqft	Included
11	Room	7'7" x 29'6"	185 sq. ft	Yes
12	W.I.C.	4'3" x 10'11"	46 sq. ft	Yes
13	Primary Bedroom	22'8" x 15'5"	316 sq. ft	Yes
14	Hall	18'7" x 5'0"	116 sq. ft	Yes
15	Bedroom	13'11" x 11'7"	157 sq. ft	Yes
16	Bath	13'1" x 10'3"	118 sq. ft	Yes

4623 Southwest Garden Home Road, Multnomah, Portland,  
Multnomah County, Oregon, United States, 97219

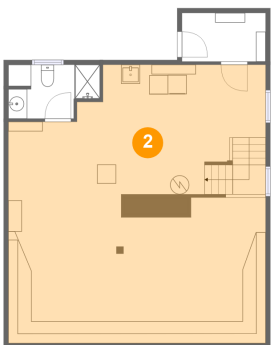
1 Floor 1 - Storage



Max Dimensions: 8'10" x 5'2"  
Calculated Area: 46 sq. ft  
Included: No

Heated: No  
Finished: No  
Enclosed: No  
Contiguous: Yes  
Permitted: Yes  
Wet space: No  
Addition: No  
Conversion: No

2 Floor 1 - Basement

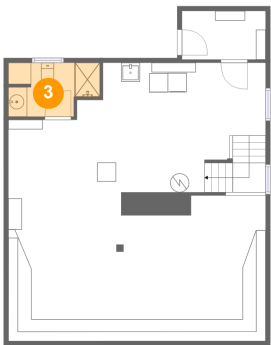


Max Dimensions: 27'3" x 27'1"  
Calculated Area: 748 sq. ft  
Included: No

Heated: Yes  
Finished: No  
Enclosed: Yes  
Contiguous: Yes  
Permitted: Yes  
Wet space: No  
Addition: No  
Conversion: No

4623 Southwest Garden Home Road, Multnomah, Portland,  
Multnomah County, Oregon, United States, 97219

3 Floor 1 - Bath



Max Dimensions: 9'8" x 5'8"  
Calculated Area: 49 sq. ft  
Included: No

Heated: Yes  
Finished: Yes  
Enclosed: Yes  
Contiguous: No  
Permitted: Yes  
Wet space: Yes  
Addition: No  
Conversion: No

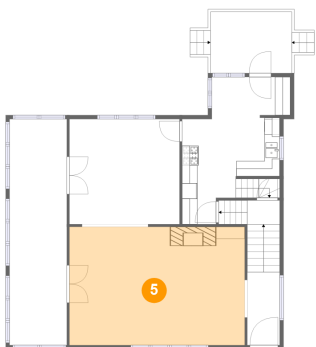
4 Floor 2 - Breakfast Nook



Max Dimensions: 10'3" x 4'11"  
Calculated Area: 51 sq. ft  
Included: Yes

Heated: Yes  
Finished: Yes  
Enclosed: Yes  
Contiguous: Yes  
Permitted: Yes  
Wet space: No  
Addition: No  
Conversion: No

5 Floor 2 - Living Room

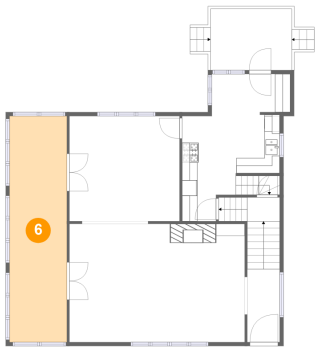


Max Dimensions: 22'10" x 15'5"  
Calculated Area: 353 sq. ft  
Included: Yes

Heated: Yes  
Finished: Yes  
Enclosed: Yes  
Contiguous: Yes  
Permitted: Yes  
Wet space: No  
Addition: No  
Conversion: No

4623 Southwest Garden Home Road, Multnomah, Portland,  
Multnomah County, Oregon, United States, 97219

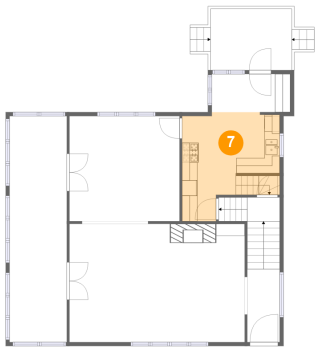
6 Floor 2 - Sunroom



Max Dimensions: 7'6" x 29'6"  
Calculated Area: 220 sq. ft  
Included: Yes

Heated: Yes  
Finished: Yes  
Enclosed: Yes  
Contiguous: Yes  
Permitted: Yes  
Wet space: No  
Addition: No  
Conversion: No

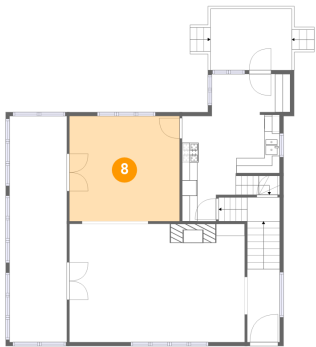
7 Floor 2 - Kitchen



Max Dimensions: 12'9" x 14'3"  
Calculated Area: 149 sq. ft  
Included: Yes

Heated: Yes  
Finished: Yes  
Enclosed: Yes  
Contiguous: Yes  
Permitted: Yes  
Wet space: No  
Addition: No  
Conversion: No

8 Floor 2 - Dining Room

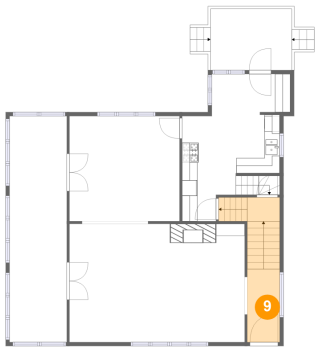


Max Dimensions: 14'4" x 13'9"  
Calculated Area: 197 sq. ft  
Included: Yes

Heated: Yes  
Finished: Yes  
Enclosed: Yes  
Contiguous: Yes  
Permitted: Yes  
Wet space: No  
Addition: No  
Conversion: No

4623 Southwest Garden Home Road, Multnomah, Portland,  
Multnomah County, Oregon, United States, 97219

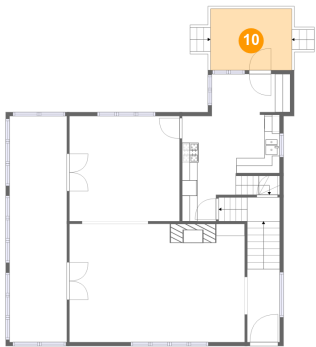
9 Floor 2 - Foyer



Max Dimensions: 4'3" x 9'6"  
Calculated Area: 91 sq. ft  
Included: Yes

Heated: Yes  
Finished: Yes  
Enclosed: Yes  
Contiguous: Yes  
Permitted: Yes  
Wet space: No  
Addition: No  
Conversion: No

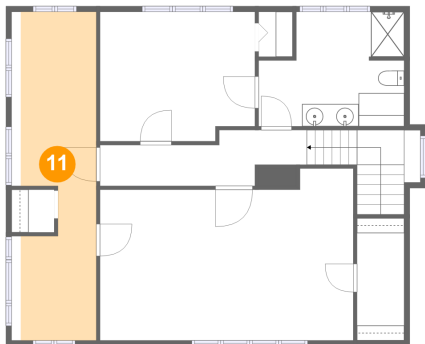
10 Floor 2 - Deck



Max Dimensions: 10'7" x 8'0"  
Calculated Area: 85 sq. ft  
Included: No

Heated: No  
Finished: Yes  
Enclosed: No  
Contiguous: Yes  
Permitted: Yes  
Wet space: No  
Addition: No  
Conversion: No

11 Floor 3 - Room



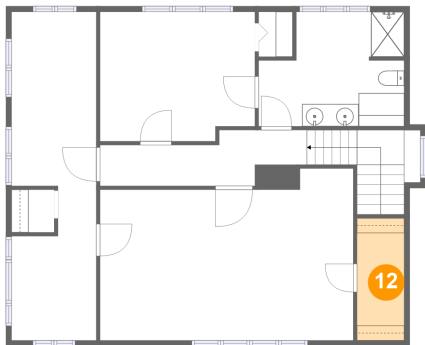
Max Dimensions: 7'7" x 29'6"  
Calculated Area: 185 sq. ft  
Included: Yes

Heated: Yes  
Finished: Yes  
Enclosed: Yes  
Contiguous: Yes  
Permitted: Yes  
Wet space: No  
Addition: No  
Conversion: No



4623 Southwest Garden Home Road, Multnomah, Portland,  
Multnomah County, Oregon, United States, 97219

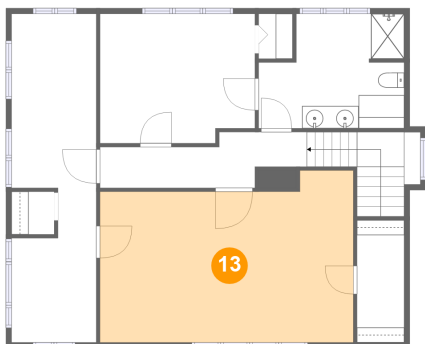
12 Floor 3 - W.I.C.



Max Dimensions: 4'3" x 10'11"  
Calculated Area: 46 sq. ft  
Included: Yes

Heated: Yes  
Finished: Yes  
Enclosed: Yes  
Contiguous: Yes  
Permitted: Yes  
Wet space: No  
Addition: No  
Conversion: No

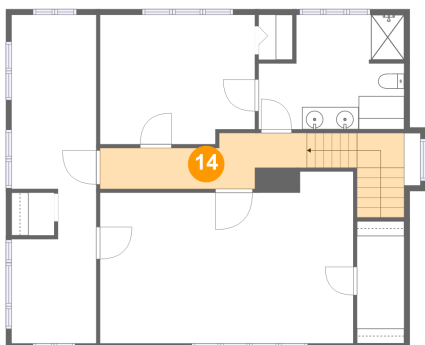
13 Floor 3 - Primary Bedroom



Max Dimensions: 22'8" x 15'5"  
Calculated Area: 316 sq. ft  
Included: Yes

Heated: Yes  
Finished: Yes  
Enclosed: Yes  
Contiguous: Yes  
Permitted: Yes  
Wet space: No  
Addition: No  
Conversion: No

14 Floor 3 - Hall

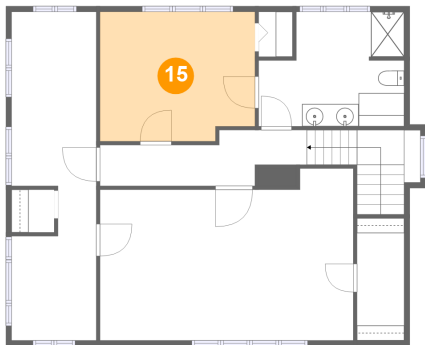


Max Dimensions: 18'7" x 5'0"  
Calculated Area: 116 sq. ft  
Included: Yes

Heated: Yes  
Finished: Yes  
Enclosed: Yes  
Contiguous: Yes  
Permitted: Yes  
Wet space: No  
Addition: No  
Conversion: No

4623 Southwest Garden Home Road, Multnomah, Portland,  
Multnomah County, Oregon, United States, 97219

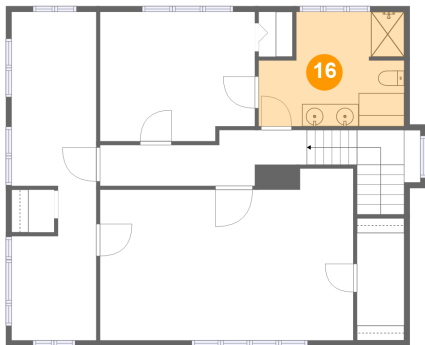
15 Floor 3 - Bedroom



Max Dimensions: 13'11" x 11'7"  
Calculated Area: 157 sq. ft  
Included: Yes

Heated: Yes  
Finished: Yes  
Enclosed: Yes  
Contiguous: Yes  
Permitted: Yes  
Wet space: No  
Addition: No  
Conversion: No

16 Floor 3 - Bath



Max Dimensions: 13'1" x 10'3"  
Calculated Area: 118 sq. ft  
Included: Yes

Heated: Yes  
Finished: Yes  
Enclosed: Yes  
Contiguous: Yes  
Permitted: Yes  
Wet space: Yes  
Addition: No  
Conversion: No