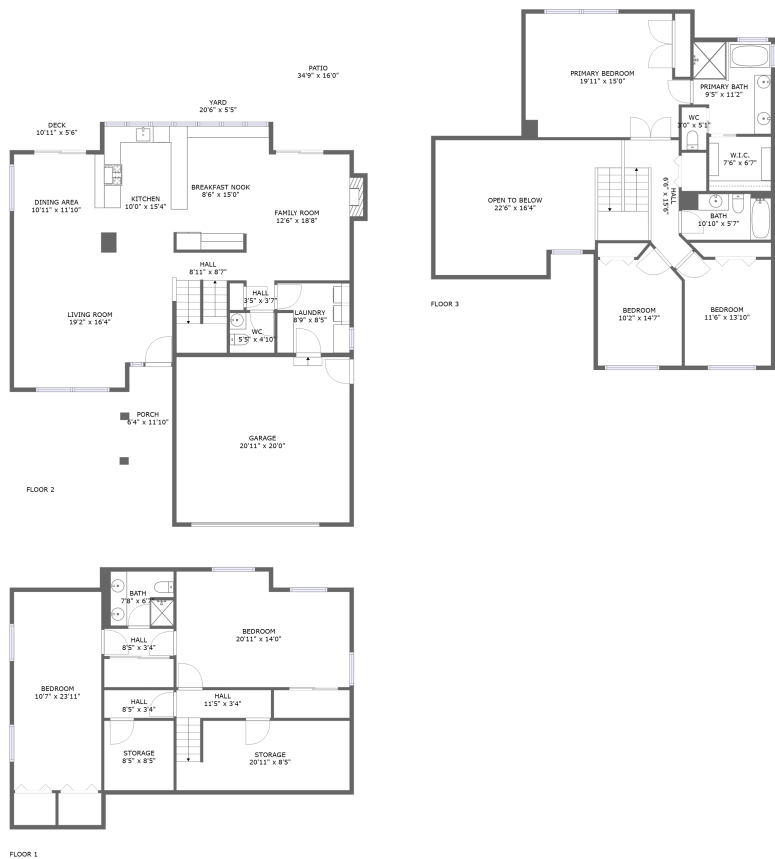


Home report

1500 Quail Hollow Court, Collindale, Fort Collins, Larimer County, Colorado, United States, 80525



Total Area: 2929 sq. ft

Floor 1: 835 sq. ft, Floor 2: 1108 sq. ft, Floor 3: 986 sq. ft

Excluded: Storage 232 sq. ft, Garage 419 sq. ft, Porch 71 sq. ft, Patio 391 sq. ft, Deck 59 sq. ft, Fireplace 10 sq. ft, Open to below 308 sq. ft, Walls: 261 sq. ft

Property summary

 **3** Floors

 **5** Bedrooms

 **3** Bathrooms

Home report

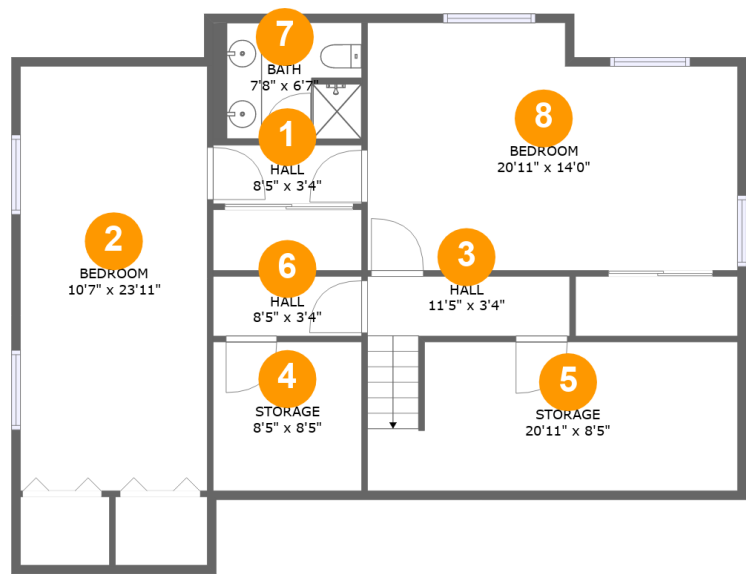
1500 Quail Hollow Court, Collindale, Fort Collins, Larimer
County, Colorado, United States, 80525

 **1**
Half baths

 **1**
Garages

Home report

1500 Quail Hollow Court, Collindale, Fort Collins, Larimer County, Colorado, United States, 80525



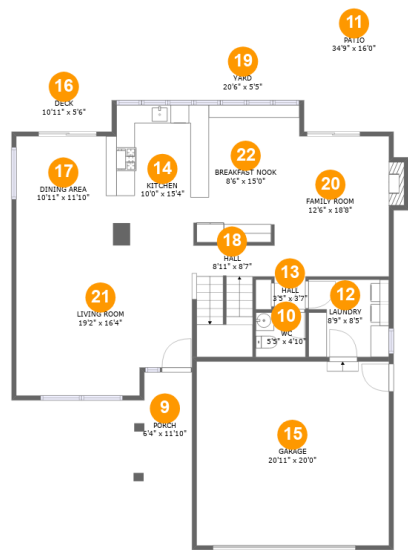
Room dimensions

Floor 1 Total:835sqft Excluded: 232sqft

#		Max Dimensions	sqft	Included
1	Hall	8'5" x 3'4"	28 sq. ft	Yes
2	Bedroom	10'7" x 23'11"	254 sq. ft	Yes
3	Hall	11'5" x 3'4"	54 sq. ft	Yes
4	Storage	8'5" x 8'5"	71 sq. ft	No
5	Storage	20'11" x 8'5"	160 sq. ft	No
6	Hall	8'5" x 3'4"	28 sq. ft	Yes
7	Bath	7'8" x 6'7"	54 sq. ft	Yes
8	Bedroom	20'11" x 14'0"	269 sq. ft	Yes

Home report

1500 Quail Hollow Court, Collindale, Fort Collins, Larimer County, Colorado, United States, 80525



Room dimensions

Floor 2 Total:1108sqft Excluded: 950sqft

#		Max Dimensions	sqft	Included
9	Porch	6'4" x 11'10"	71 sq. ft	No
10	WC	5'5" x 4'10"	26 sq. ft	Yes
11	Patio	34'9" x 16'0"	391 sq. ft	No
12	Laundry	8'9" x 8'5"	73 sq. ft	Yes
13	Hall	3'5" x 3'7"	12 sq. ft	Yes
14	Kitchen	10'0" x 15'4"	149 sq. ft	Yes
15	Garage	20'11" x 20'0"	419 sq. ft	No
16	Deck	10'11" x 5'6"	59 sq. ft	No
17	Dining Area	10'11" x 11'10"	130 sq. ft	Yes
18	Hall	8'11" x 8'7"	85 sq. ft	Yes
19	Yard	20'6" x 5'5"	72 sq. ft	No

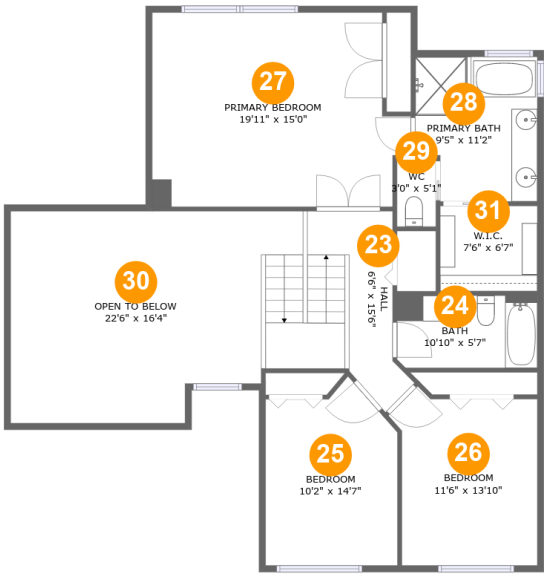
Home report

**1500 Quail Hollow Court, Collindale, Fort Collins, Larimer
County, Colorado, United States, 80525**

#		Max Dimensions	sqft	Included
20	Family Room	12'6" x 18'8"	207 sq. ft	Yes
21	Living Room	19'2" x 16'4"	295 sq. ft	Yes
22	Breakfast Nook	8'6" x 15'0"	109 sq. ft	Yes

Home report

1500 Quail Hollow Court, Collindale, Fort Collins, Larimer County, Colorado, United States, 80525

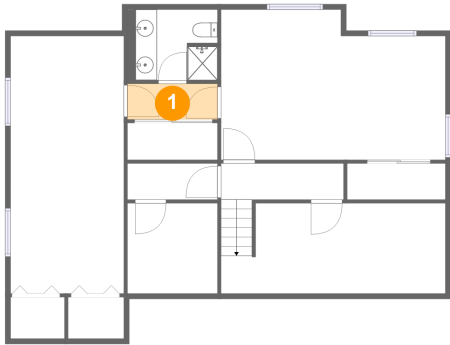


Room dimensions

Floor 3 Total:986sqft Excluded: 308sqft

#		Max Dimensions	sqft	Included
23	Hall	6'6" x 15'6"	122 sq. ft	Yes
24	Bath	10'10" x 5'7"	60 sq. ft	Yes
25	Bedroom	10'2" x 14'7"	130 sq. ft	Yes
26	Bedroom	11'6" x 13'10"	136 sq. ft	Yes
27	Primary Bedroom	19'11" x 15'0"	275 sq. ft	Yes
28	Primary Bath	9'5" x 11'2"	98 sq. ft	Yes
29	WC	3'0" x 5'1"	15 sq. ft	Yes
30	Open To Below	22'6" x 16'4"	308 sq. ft	No
31	W.I.C.	7'6" x 6'7"	49 sq. ft	Yes

1 Floor 1 - Hall



Max Dimensions: 8'5" x 3'4"
Calculated Area: 28 sq. ft
Included: Yes

Heated: Yes
Finished: Yes
Enclosed: Yes
Contiguous: Yes
Permitted: Yes
Wet space: No
Addition: No
Conversion: No

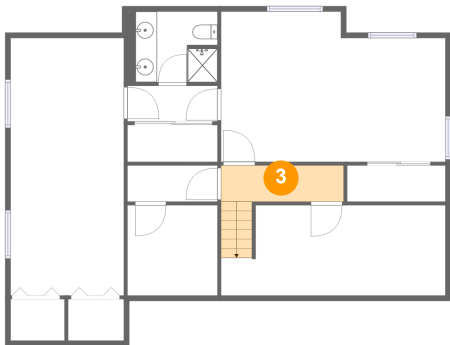
2 Floor 1 - Bedroom



Max Dimensions: 10'7" x 23'11"
Calculated Area: 254 sq. ft
Included: Yes

Heated: Yes
Finished: Yes
Enclosed: Yes
Contiguous: Yes
Permitted: Yes
Wet space: No
Addition: No
Conversion: No

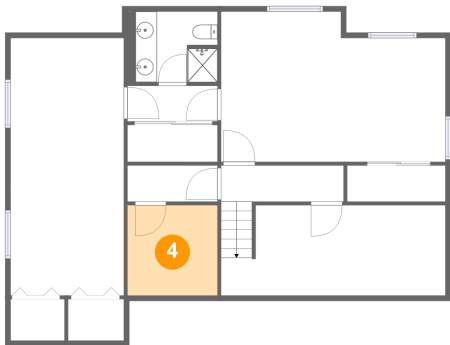
3 Floor 1 - Hall



Max Dimensions: 11'5" x 3'4"
Calculated Area: 54 sq. ft
Included: Yes

Heated: Yes
Finished: Yes
Enclosed: Yes
Contiguous: Yes
Permitted: Yes
Wet space: No
Addition: No
Conversion: No

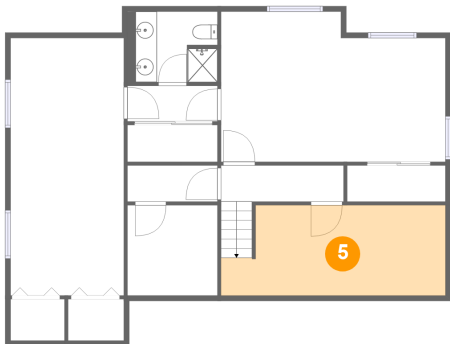
4 Floor 1 - Storage



Max Dimensions: 8'5" x 8'5"
Calculated Area: 71 sq. ft
Included: No

Heated: No
Finished: No
Enclosed: No
Contiguous: Yes
Permitted: Yes
Wet space: No
Addition: No
Conversion: No

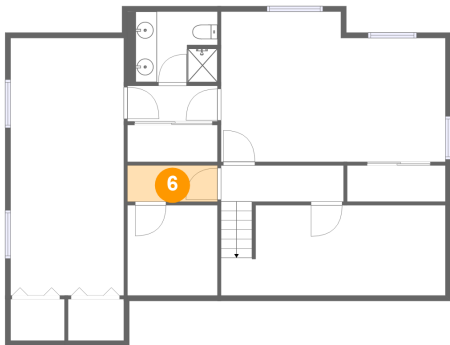
5 Floor 1 - Storage



Max Dimensions: 20'11" x 8'5"
Calculated Area: 160 sq. ft
Included: No

Heated: No
Finished: No
Enclosed: No
Contiguous: Yes
Permitted: Yes
Wet space: No
Addition: No
Conversion: No

6 Floor 1 - Hall



Max Dimensions: 8'5" x 3'4"
Calculated Area: 28 sq. ft
Included: Yes

Heated: Yes
Finished: Yes
Enclosed: Yes
Contiguous: Yes
Permitted: Yes
Wet space: No
Addition: No
Conversion: No

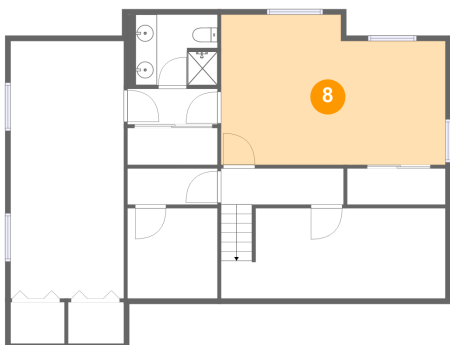
7 Floor 1 - Bath



Max Dimensions: 7'8" x 6'7"
Calculated Area: 54 sq. ft
Included: Yes

Heated: Yes
Finished: Yes
Enclosed: Yes
Contiguous: Yes
Permitted: Yes
Wet space: Yes
Addition: No
Conversion: No

8 Floor 1 - Bedroom



Max Dimensions: 20'11" x 14'0"
Calculated Area: 269 sq. ft
Included: Yes

Heated: Yes
Finished: Yes
Enclosed: Yes
Contiguous: Yes
Permitted: Yes
Wet space: No
Addition: No
Conversion: No

1500 Quail Hollow Court, Collindale, Fort Collins, Larimer
County, Colorado, United States, 80525

9 Floor 2 - Porch



Max Dimensions: 6'4" x 11'10"
Calculated Area: 71 sq. ft
Included: No

Heated: No
Finished: Yes
Enclosed: No
Contiguous: Yes
Permitted: Yes
Wet space: No
Addition: No
Conversion: No

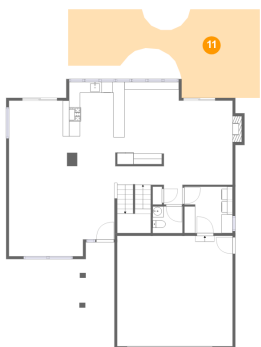
10 Floor 2 - WC



Max Dimensions: 5'5" x 4'10"
Calculated Area: 26 sq. ft
Included: Yes

Heated: Yes
Finished: Yes
Enclosed: Yes
Contiguous: Yes
Permitted: Yes
Wet space: Yes
Addition: No
Conversion: No

11 Floor 2 - Patio



Max Dimensions: 34'9" x 16'0"
Calculated Area: 391 sq. ft
Included: No

Heated: No
Finished: Yes
Enclosed: No
Contiguous: Yes
Permitted: Yes
Wet space: No
Addition: No
Conversion: No

12 Floor 2 - Laundry



Max Dimensions: 8'9" x 8'5"
Calculated Area: 73 sq. ft
Included: Yes

Heated: Yes
Finished: Yes
Enclosed: Yes
Contiguous: Yes
Permitted: Yes
Wet space: No
Addition: No
Conversion: No

13 Floor 2 - Hall



Max Dimensions: 3'5" x 3'7"
Calculated Area: 12 sq. ft
Included: Yes

Heated: Yes
Finished: Yes
Enclosed: Yes
Contiguous: Yes
Permitted: Yes
Wet space: No
Addition: No
Conversion: No

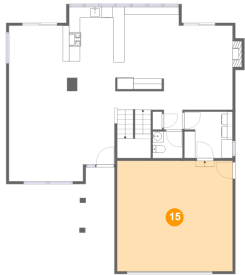
14 Floor 2 - Kitchen



Max Dimensions: 10'0" x 15'4"
Calculated Area: 149 sq. ft
Included: Yes

Heated: Yes
Finished: Yes
Enclosed: Yes
Contiguous: Yes
Permitted: Yes
Wet space: No
Addition: No
Conversion: No

15 Floor 2 - Garage



Max Dimensions: 20'11" x 20'0"
Calculated Area: 419 sq. ft
Included: No

Heated: No
Finished: No
Enclosed: Yes
Contiguous: Yes
Permitted: Yes
Wet space: No
Addition: No
Conversion: No

16 Floor 2 - Deck



Max Dimensions: 10'11" x 5'6"
Calculated Area: 59 sq. ft
Included: No

Heated: No
Finished: Yes
Enclosed: No
Contiguous: Yes
Permitted: Yes
Wet space: No
Addition: No
Conversion: No

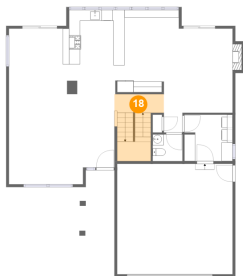
17 Floor 2 - Dining Area



Max Dimensions: 10'11" x 11'10"
Calculated Area: 130 sq. ft
Included: Yes

Heated: Yes
Finished: Yes
Enclosed: Yes
Contiguous: Yes
Permitted: Yes
Wet space: No
Addition: No
Conversion: No

18 Floor 2 - Hall



Max Dimensions: 8'11" x 8'7"
Calculated Area: 85 sq. ft
Included: Yes

Heated: Yes
Finished: Yes
Enclosed: Yes
Contiguous: Yes
Permitted: Yes
Wet space: No
Addition: No
Conversion: No

19 Floor 2 - Yard



Max Dimensions: 20'6" x 5'5"
Calculated Area: 72 sq. ft
Included: No

Heated: No
Finished: No
Enclosed: No
Contiguous: Yes
Permitted: No
Wet space: No
Addition: No
Conversion: No

20 Floor 2 - Family Room



Max Dimensions: 12'6" x 18'8"
Calculated Area: 207 sq. ft
Included: Yes

Heated: Yes
Finished: Yes
Enclosed: Yes
Contiguous: Yes
Permitted: Yes
Wet space: No
Addition: No
Conversion: No

1500 Quail Hollow Court, Collindale, Fort Collins, Larimer
County, Colorado, United States, 80525

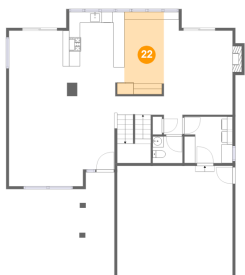
21 Floor 2 - Living Room



Max Dimensions: 19'2" x 16'4"
Calculated Area: 295 sq. ft
Included: Yes

Heated: Yes
Finished: Yes
Enclosed: Yes
Contiguous: Yes
Permitted: Yes
Wet space: No
Addition: No
Conversion: No

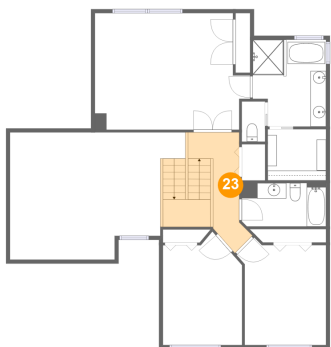
22 Floor 2 - Breakfast Nook



Max Dimensions: 8'6" x 15'0"
Calculated Area: 109 sq. ft
Included: Yes

Heated: Yes
Finished: Yes
Enclosed: Yes
Contiguous: Yes
Permitted: Yes
Wet space: No
Addition: No
Conversion: No

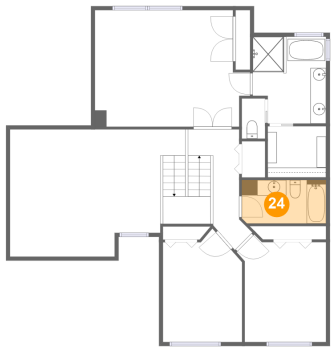
23 Floor 3 - Hall



Max Dimensions: 6'6" x 15'6"
Calculated Area: 122 sq. ft
Included: Yes

Heated: Yes
Finished: Yes
Enclosed: Yes
Contiguous: Yes
Permitted: Yes
Wet space: No
Addition: No
Conversion: No

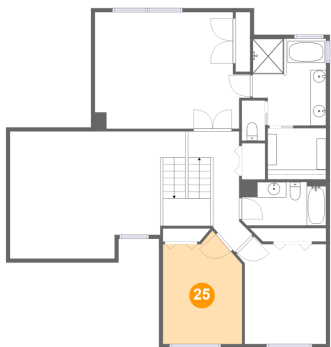
24 Floor 3 - Bath



Max Dimensions: 10'10" x 5'7"
Calculated Area: 60 sq. ft
Included: Yes

Heated: Yes
Finished: Yes
Enclosed: Yes
Contiguous: Yes
Permitted: Yes
Wet space: Yes
Addition: No
Conversion: No

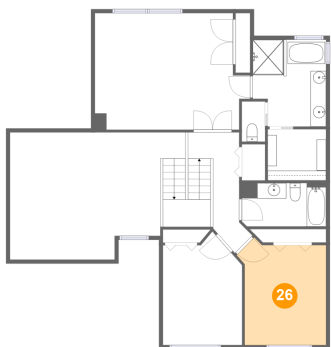
25 Floor 3 - Bedroom



Max Dimensions: 10'2" x 14'7"
Calculated Area: 130 sq. ft
Included: Yes

Heated: Yes
Finished: Yes
Enclosed: Yes
Contiguous: Yes
Permitted: Yes
Wet space: No
Addition: No
Conversion: No

26 Floor 3 - Bedroom

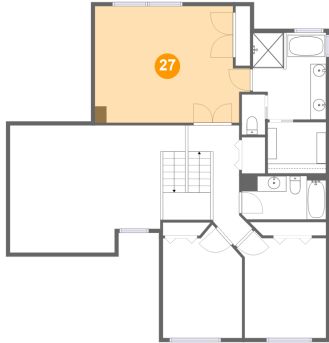


Max Dimensions: 11'6" x 13'10"
Calculated Area: 136 sq. ft
Included: Yes

Heated: Yes
Finished: Yes
Enclosed: Yes
Contiguous: Yes
Permitted: Yes
Wet space: No
Addition: No
Conversion: No

1500 Quail Hollow Court, Collindale, Fort Collins, Larimer
County, Colorado, United States, 80525

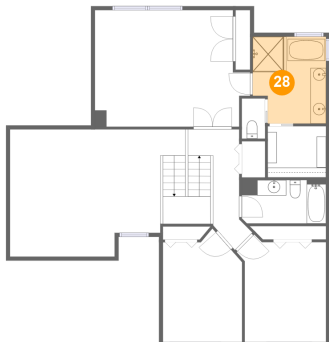
27 Floor 3 - Primary Bedroom



Max Dimensions: 19'11" x 15'0"
Calculated Area: 275 sq. ft
Included: Yes

Heated: Yes
Finished: Yes
Enclosed: Yes
Contiguous: Yes
Permitted: Yes
Wet space: No
Addition: No
Conversion: No

28 Floor 3 - Primary Bath



Max Dimensions: 9'5" x 11'2"
Calculated Area: 98 sq. ft
Included: Yes

Heated: Yes
Finished: Yes
Enclosed: Yes
Contiguous: Yes
Permitted: Yes
Wet space: Yes
Addition: No
Conversion: No

29 Floor 3 - WC

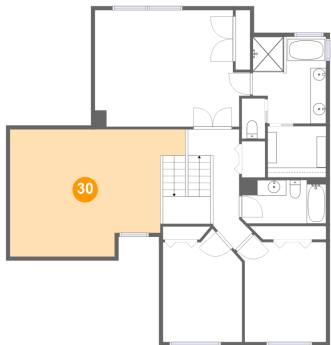


Max Dimensions: 3'0" x 5'1"
Calculated Area: 15 sq. ft
Included: Yes

Heated: Yes
Finished: Yes
Enclosed: Yes
Contiguous: Yes
Permitted: Yes
Wet space: No
Addition: No
Conversion: No

1500 Quail Hollow Court, Collindale, Fort Collins, Larimer
County, Colorado, United States, 80525

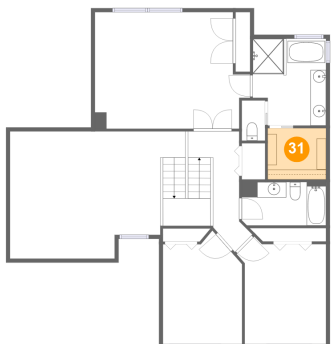
30 Floor 3 - Open To Below



Max Dimensions: 22'6" x 16'4"
Calculated Area: 308 sq. ft
Included: No

Heated: No
Finished: No
Enclosed: No
Contiguous: Yes
Permitted: No
Wet space: No
Addition: No
Conversion: No

31 Floor 3 - W.I.C.



Max Dimensions: 7'6" x 6'7"
Calculated Area: 49 sq. ft
Included: Yes

Heated: Yes
Finished: Yes
Enclosed: Yes
Contiguous: Yes
Permitted: Yes
Wet space: No
Addition: No
Conversion: No