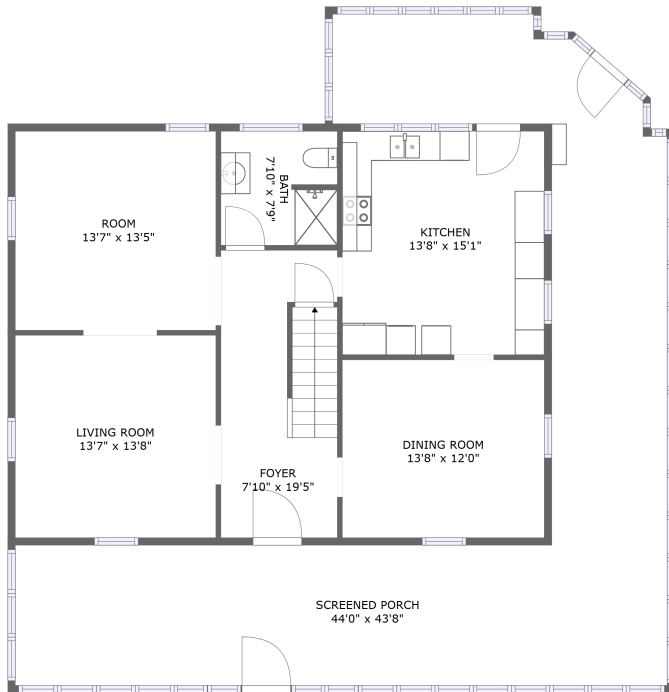
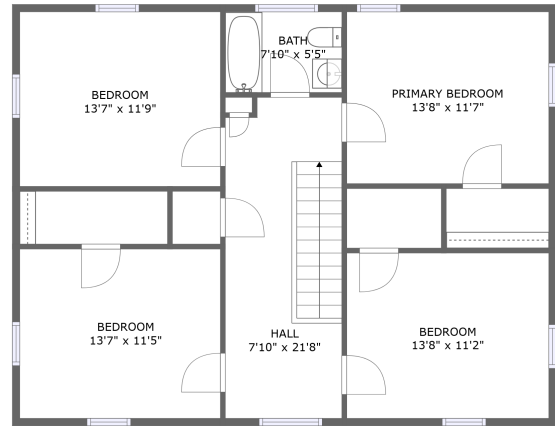


Home Data Report

894 Hathaway Point Road, Saint Albans, Franklin County, Vermont, United States, 05478,



FLOOR 1



FLOOR 2

Property Summary

 **0** garages

 **4** bedrooms

 **2** bathrooms

 **0** half baths

 **2** floors

 **2,090** Gross Living Area sqft

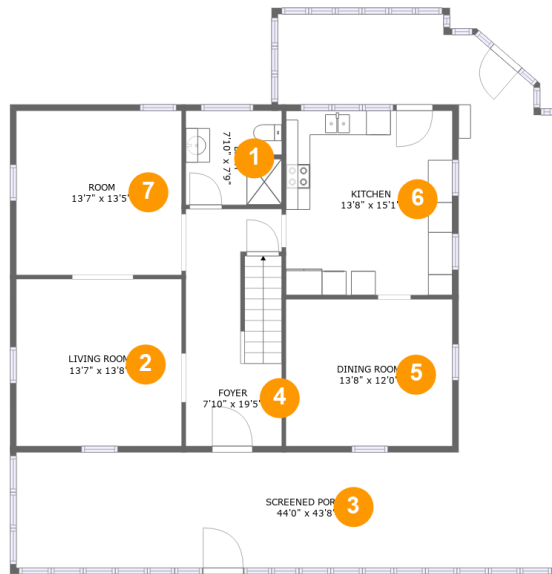
 **2,924** total sqft

Scan captured on Thu, 06 Jun 2024 01:41:12 GMT

Information is calculated by technology; deemed highly reliable but not guaranteed.

Home Data Report

**894 Hathaway Point Road, Saint Albans,
Franklin County, Vermont, United States, 05478,**



Room Dimensions

Floor 1

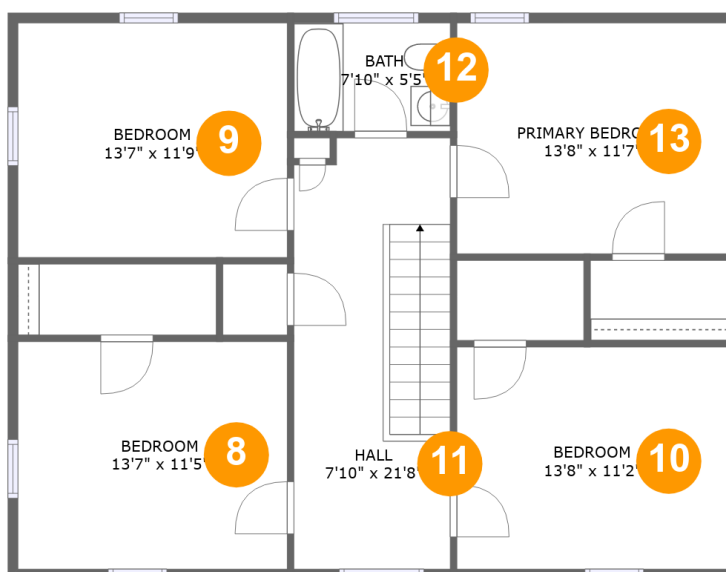
Total sqft: 1879

Living area: 1045

#	Room name	Dimensions	Area (sqft)	Counted as Living Area
1	Bath	7'10" x 7'9"	60 sq. ft	Yes
2	Living Room	13'7" x 13'8"	185 sq. ft	Yes
3	Screened Porch	44'0" x 43'8"	770 sq. ft	No
4	Foyer	7'10" x 19'5"	150 sq. ft	Yes
5	Dining Room	13'8" x 12'0"	164 sq. ft	Yes
6	Kitchen	13'8" x 15'1"	206 sq. ft	Yes
7	Room	13'7" x 13'5"	182 sq. ft	Yes

Home Data Report

**894 Hathaway Point Road, Saint Albans,
Franklin County, Vermont, United States, 05478,**



Room Dimensions

Floor 2

Total sqft: 1045

Living area: 1045

#	Room name	Dimensions	Area (sqft)	Counted as Living Area
8	Bedroom	13'7" x 11'5"	155 sq. ft	Yes
9	Bedroom	13'7" x 11'9"	160 sq. ft	Yes
10	Bedroom	13'8" x 11'2"	152 sq. ft	Yes
11	Hall	7'10" x 21'8"	168 sq. ft	Yes
12	Bath	7'10" x 5'5"	43 sq. ft	Yes
13	Primary Bedroom	13'8" x 11'7"	158 sq. ft	Yes

**894 Hathaway Point Road, Saint Albans,
Franklin County, Vermont, United States, 05478,**

1 Floor 1 - Bath



Dimensions: 7'10" x 7'9"
Area: 60 sq. ft
Counted as Living Area:
Yes

Heated: Yes
Finished: Yes
Enclosed: Yes
Contiguous:
Yes
Permitted: Yes
Wet Space: Yes
Addition: No
Conversion: No

2 Floor 1 - Living Room



Dimensions: 13'7" x 13'8"
Area: 185 sq. ft
Counted as Living Area:
Yes

Heated: Yes
Finished: Yes
Enclosed: Yes
Contiguous:
Yes
Permitted: Yes
Wet Space: No
Addition: No
Conversion: No

**894 Hathaway Point Road, Saint Albans,
Franklin County, Vermont, United States, 05478,**

3 Floor 1 - Screened Porch



Dimensions: 44'0" x 43'8"
Area: 770 sq. ft
Counted as Living Area: No

Heated: No
Finished: Yes
Enclosed: No
Contiguous: Yes
Permitted: Yes
Wet Space: No
Addition: No
Conversion: No

4 Floor 1 - Foyer



Dimensions: 7'10" x 19'5"
Area: 150 sq. ft
Counted as Living Area:
Yes

Heated: Yes
Finished: Yes
Enclosed: Yes
Contiguous:
Yes
Permitted: Yes
Wet Space: No
Addition: No
Conversion: No

5 Floor 1 - Dining Room



Dimensions: 13'8" x 12'0"
Area: 164 sq. ft
Counted as Living Area:
Yes

Heated: Yes
Finished: Yes
Enclosed: Yes
Contiguous:
Yes
Permitted: Yes
Wet Space: No
Addition: No
Conversion: No

**894 Hathaway Point Road, Saint Albans,
Franklin County, Vermont, United States, 05478,**

6 Floor 1 - Kitchen



Dimensions: 13'8" x 15'1"
Area: 206 sq. ft
Counted as Living Area:
Yes

Heated: Yes
Finished: Yes
Enclosed: Yes
Contiguous:
Yes
Permitted: Yes
Wet Space: No
Addition: No
Conversion: No

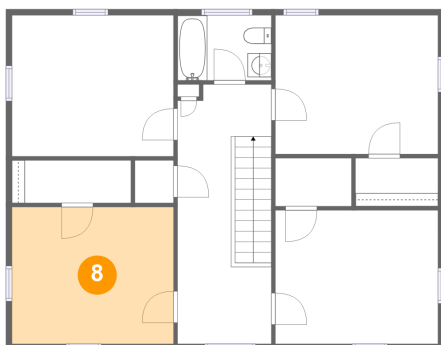
7 Floor 1 - Room



Dimensions: 13'7" x 13'5"
Area: 182 sq. ft
Counted as Living Area:
Yes

Heated: Yes
Finished: Yes
Enclosed: Yes
Contiguous:
Yes
Permitted: Yes
Wet Space: No
Addition: No
Conversion: No

8 Floor 2 - Bedroom

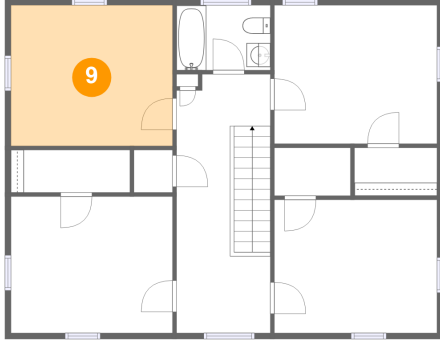


Dimensions: 13'7" x 11'5"
Area: 155 sq. ft
Counted as Living Area:
Yes

Heated: Yes
Finished: Yes
Enclosed: Yes
Contiguous:
Yes
Permitted: Yes
Wet Space: No
Addition: No
Conversion: No

**894 Hathaway Point Road, Saint Albans,
Franklin County, Vermont, United States, 05478,**

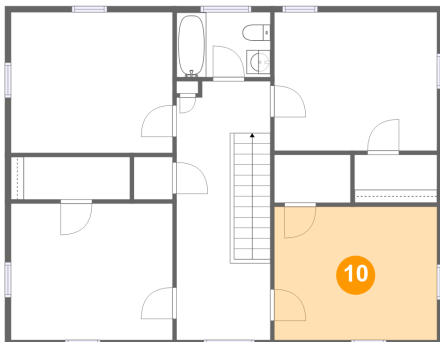
9 Floor 2 - Bedroom



Dimensions: 13'7" x 11'9"
Area: 160 sq. ft
Counted as Living Area:
Yes

Heated: Yes
Finished: Yes
Enclosed: Yes
Contiguous:
Yes
Permitted: Yes
Wet Space: No
Addition: No
Conversion: No

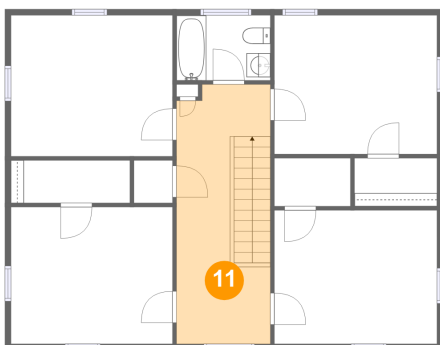
10 Floor 2 - Bedroom



Dimensions: 13'8" x 11'2"
Area: 152 sq. ft
Counted as Living Area:
Yes

Heated: Yes
Finished: Yes
Enclosed: Yes
Contiguous:
Yes
Permitted: Yes
Wet Space: No
Addition: No
Conversion: No

11 Floor 2 - Hall

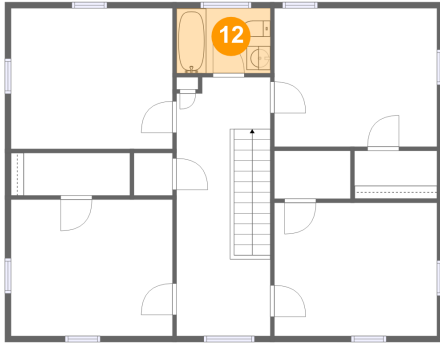


Dimensions: 7'10" x 21'8"
Area: 168 sq. ft
Counted as Living Area:
Yes

Heated: Yes
Finished: Yes
Enclosed: Yes
Contiguous:
Yes
Permitted: Yes
Wet Space: No
Addition: No
Conversion: No

**894 Hathaway Point Road, Saint Albans,
Franklin County, Vermont, United States, 05478,**

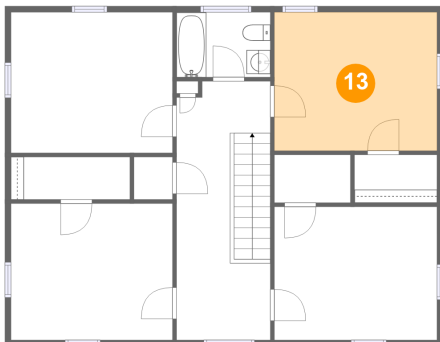
12 Floor 2 - Bath



Dimensions: 7'10" x 5'5"
Area: 43 sq. ft
Counted as Living Area:
Yes

Heated: Yes
Finished: Yes
Enclosed: Yes
Contiguous:
Yes
Permitted: Yes
Wet Space: Yes
Addition: No
Conversion: No

13 Floor 2 - Primary Bedroom



Dimensions: 13'8" x 11'7"
Area: 158 sq. ft
Counted as Living Area:
Yes

Heated: Yes
Finished: Yes
Enclosed: Yes
Contiguous:
Yes
Permitted: Yes
Wet Space: No
Addition: No
Conversion: No