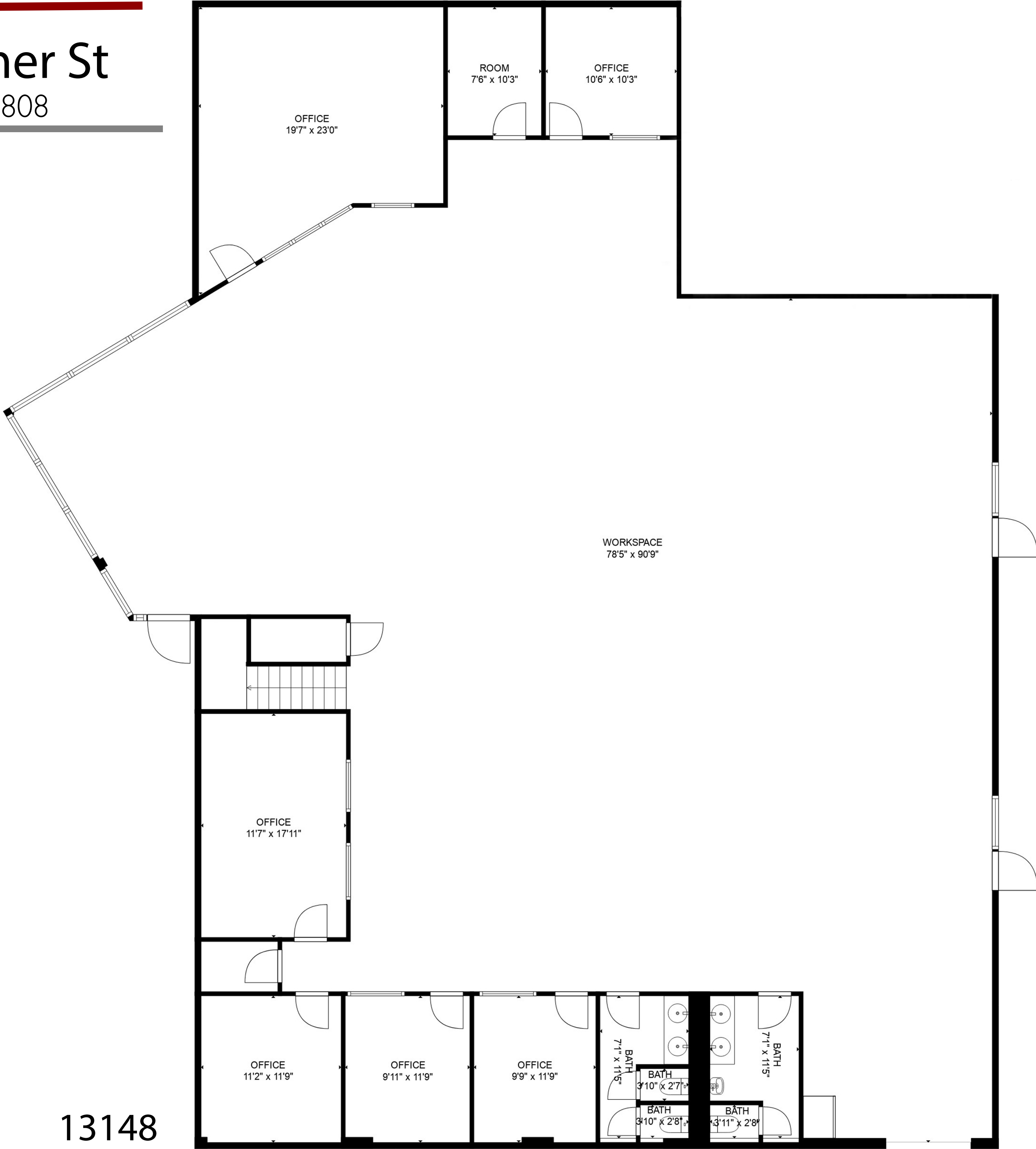
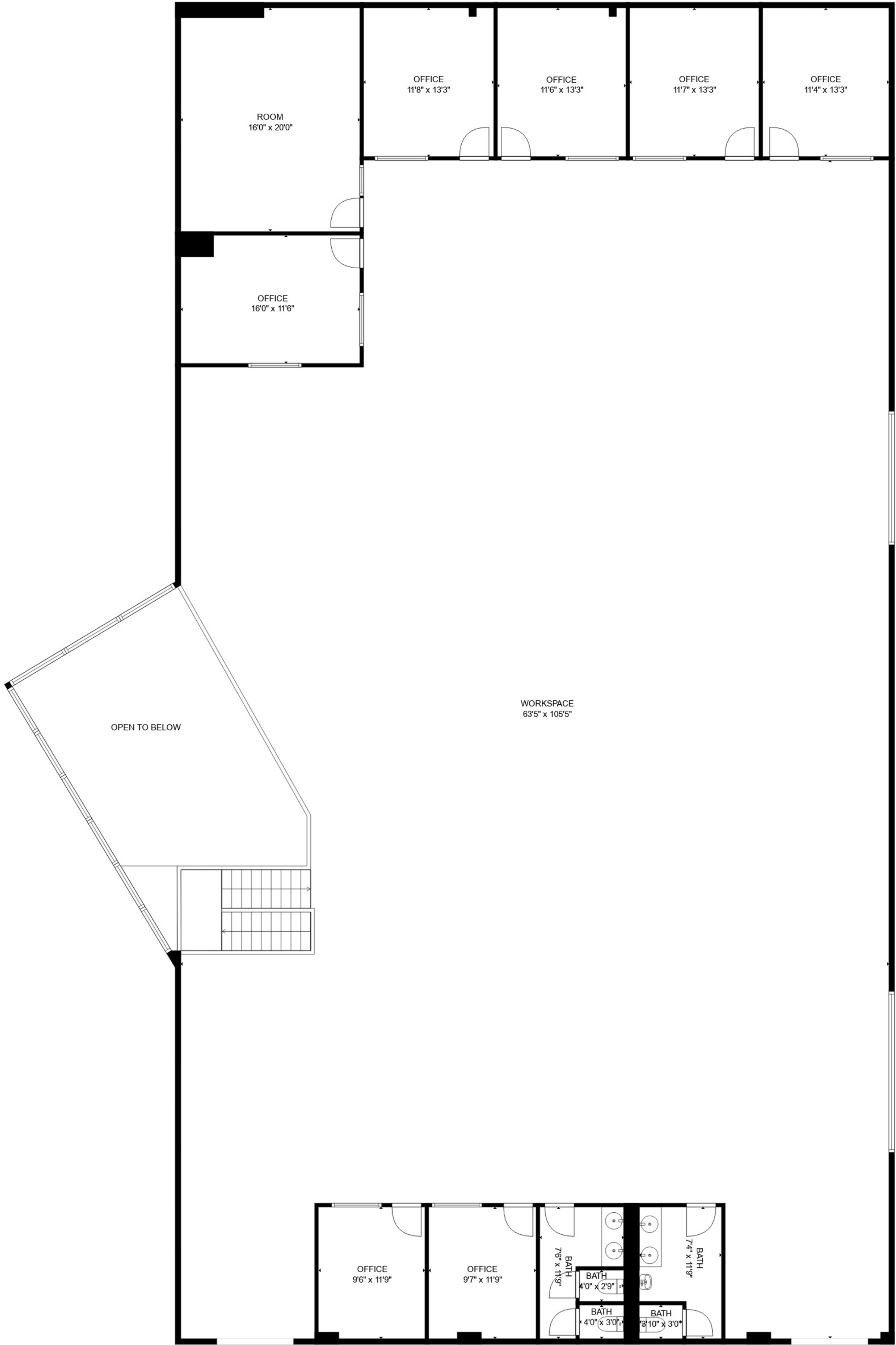


3000 Palmer St  
Missoula, MT 59808



Main Floor

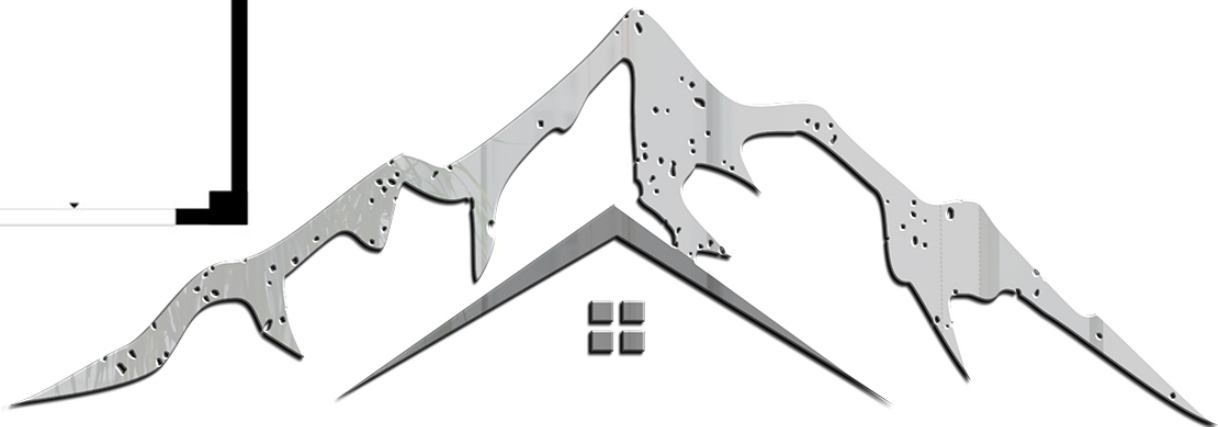


Second Floor

0 4 13148

BEDROOMS BATHROOMS TOTAL SQ.FT.

Measurements are approximate and may not be to scale.  
The floor plan illustration is not suitable for construction/architectural purposes.  
This communication is not intended to cause or induce breach of an existing agency agreement.



MISSOULA  
REAL ESTATE PHOTOGRAPHY