

# WAILEA EKAHI 35B

A wide-angle photograph of a bright, modern living and dining area. On the left, a dark wood dining table is surrounded by matching chairs, with a bowl of pineapples on top. A large black TV is mounted on the wall above it. In the center, a large glass sliding door opens to an outdoor patio with a dining table and chairs. To the right, a light-colored armchair sits on a rug next to a dark wood coffee table with a bowl of pineapples. A grey sofa is partially visible on the far right. Large windows on the right side offer a view of a lush green golf course and a building in the distance. The ceiling features recessed lighting and a dark wood fan.

## UPGRADES & FEATURES

REMODEL COMPLETED DECEMBER 2018



# WINDOWS AND SLIDERS



New high-quality Fleetwood sliders at downstairs and upstairs lanais.



Larger living room window installed to improve view.



New window installed in Primary suite. Also new jalousies throughout unit.



# KITCHEN

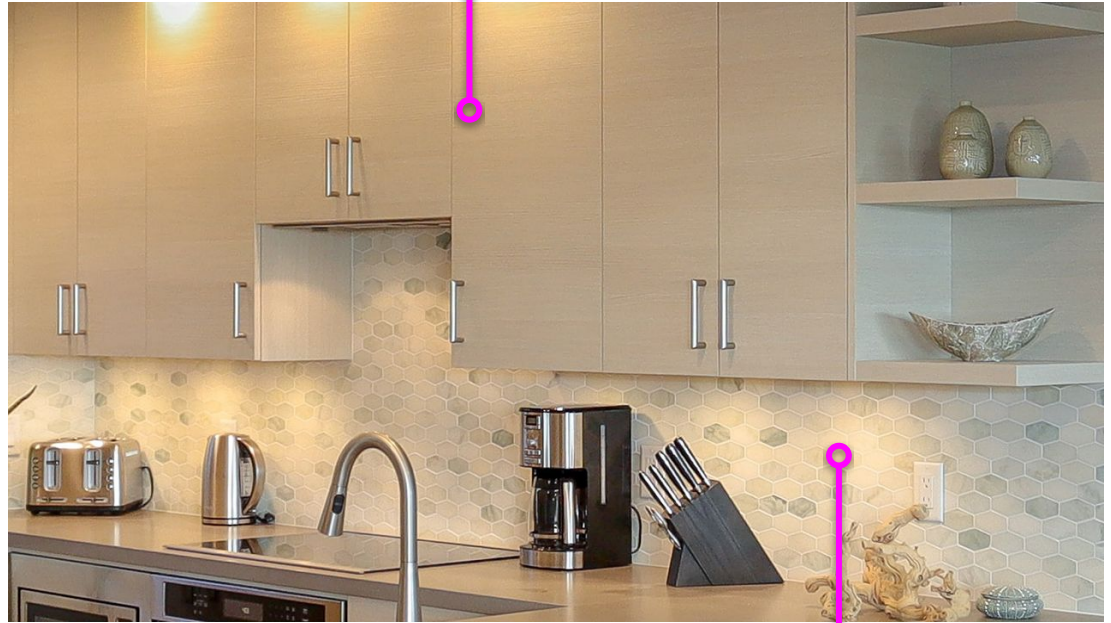
New premium cabinets with under-cabinet lighting.



All new appliances including a cooktop/oven combo.



Quartz countertops with waterfall end.



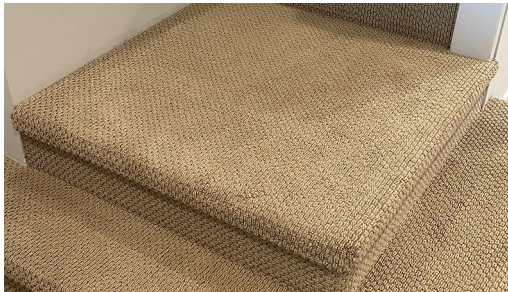
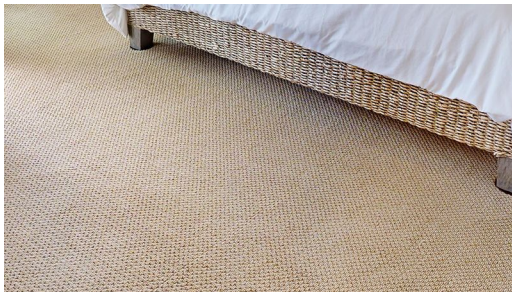
New tile backsplash.



# FLOORING



New porcelain tile flooring throughout interior and both lanais.



New carpet installed January 2022 in upstairs bedrooms as well as stairs.



# BEDROOMS

High vaulted ceilings in both bedrooms.



Added storage above Primary Suite closet.

Upper ceiling has **insulation** added to keep it cooler during the day.



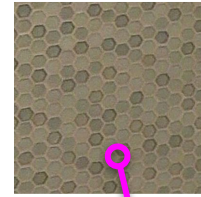
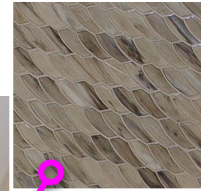
Second Bedroom can be configured with a king bed or two twin beds (king configuration shown)



# REMODELED BATHROOMS

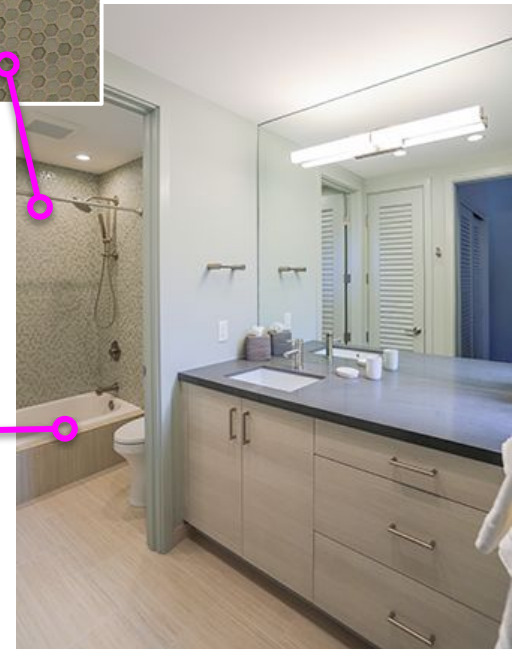


New sinks, counters and cabinets  
in all 2.5 baths



New feature tile

New tub



New walk-in shower  
and opened bathroom layout

# AIR CONDITIONING



Three-zone split A/C system

Condenser unit located  
on entry side so main lanai  
space is not obstructed





# ARCHITECTURE

Steel support beam added to open up layout. This is the only townhouse unit at Ekahi with this layout.

New extra-height interior doors.

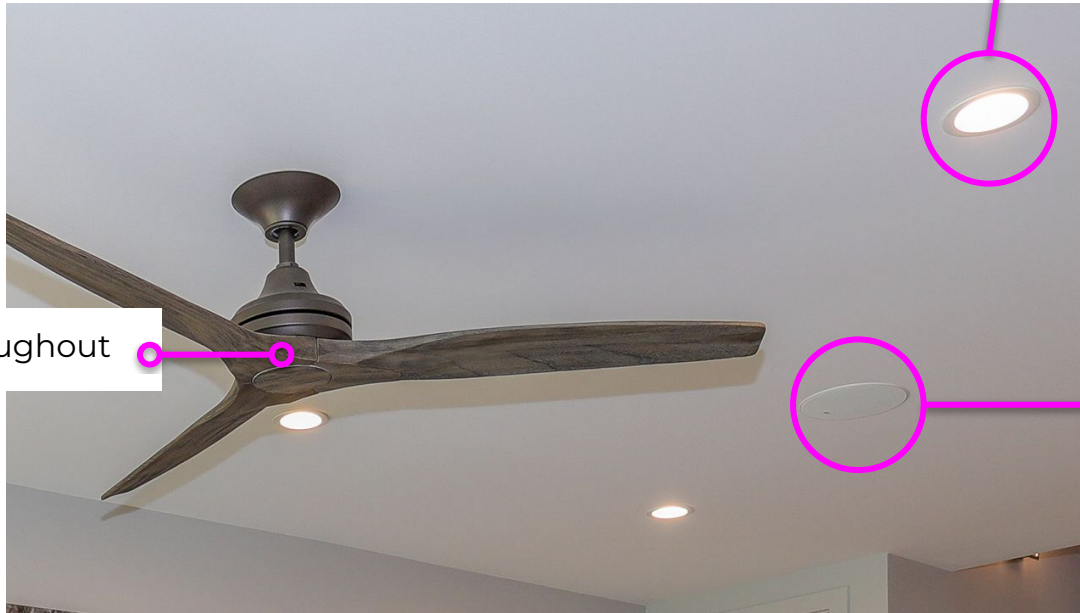






# CEILING

New recessed LED lighting fixtures



New fans throughout

In-ceiling speakers  
wired to a media  
cabinet in dining room



# ADDITIONAL DETAILS



All TVs are wall mounted with no exposed wires.



High-quality roller blinds throughout.



All new furniture, artwork and decor.

---

New water heaters (2 units installed)  
New door casings, baseboards throughout  
All exterior stucco patched and repaired

Walls have “smooth-wall” skim-coated treatment for new drywall look