

Home report

4152 Carr Rouse Road, Roanoke, Roanoke County, Virginia,
United States, 24014



Total Area: 1145 sq. ft

Floor 1: 928 sq. ft, Floor 2: 217 sq. ft

Excluded: Porch 165 sq. ft, Deck 38 sq. ft, Fireplace 15 sq. ft, Low ceiling 263 sq. ft, Walls: 108 sq. ft

Property summary

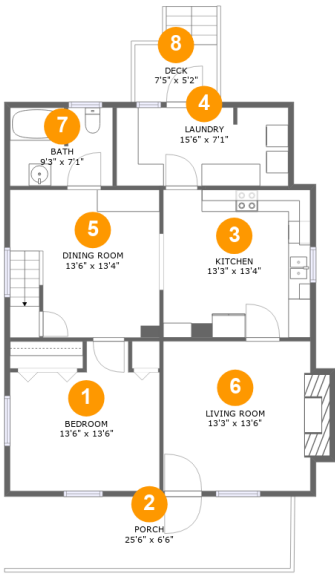
 **2** Floors

 **3** Bedrooms

 **1** Bathrooms

Home report

4152 Carr Rouse Road, Roanoke, Roanoke County, Virginia,
United States, 24014



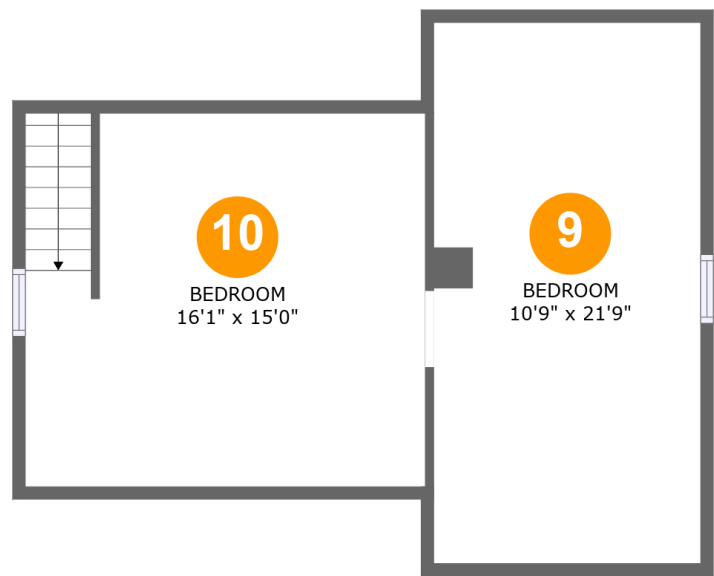
Room dimensions

Floor 1 Total:928sqft Excluded: 218sqft

#		Max Dimensions	sqft	Included
1	Bedroom	13'6" x 13'6"	155 sq. ft	Yes
2	Porch	25'6" x 6'6"	165 sq. ft	No
3	Kitchen	13'3" x 13'4"	177 sq. ft	Yes
4	Laundry	15'6" x 7'1"	109 sq. ft	Yes
5	Dining Room	13'6" x 13'4"	179 sq. ft	Yes
6	Living Room	13'3" x 13'6"	193 sq. ft	Yes
7	Bath	9'3" x 7'1"	65 sq. ft	Yes
8	Deck	7'5" x 5'2"	38 sq. ft	No

Home report

4152 Carr Rouse Road, Roanoke, Roanoke County, Virginia,
United States, 24014



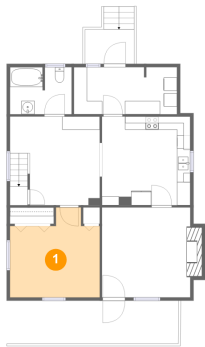
Room dimensions

Floor 2 Total:217sqft Excluded: 263sqft

#		Max Dimensions	sqft	Included
9	Bedroom	10'9" x 21'9"	81 sq. ft	Yes
10	Bedroom	16'1" x 15'0"	130 sq. ft	Yes

4152 Carr Rouse Road, Roanoke, Roanoke County, Virginia,
United States, 24014

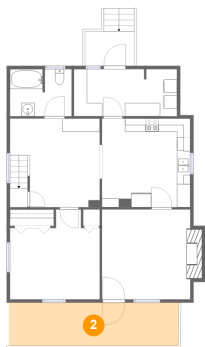
1 Floor 1 - Bedroom



Max Dimensions: 13'6" x 13'6"
Calculated Area: 155 sq. ft
Included: Yes

Heated: Yes
Finished: Yes
Enclosed: Yes
Contiguous: Yes
Permitted: Yes
Wet space: No
Addition: No
Conversion: No

2 Floor 1 - Porch

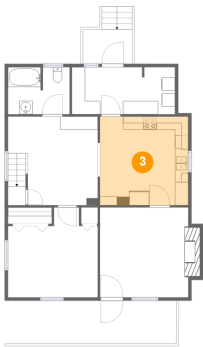


Max Dimensions: 25'6" x 6'6"
Calculated Area: 165 sq. ft
Included: No

Heated: No
Finished: Yes
Enclosed: No
Contiguous: Yes
Permitted: Yes
Wet space: No
Addition: No
Conversion: No

4152 Carr Rouse Road, Roanoke, Roanoke County, Virginia,
United States, 24014

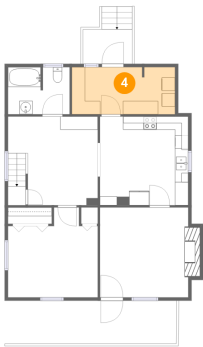
3 Floor 1 - Kitchen



Max Dimensions: 13'3" x 13'4"
Calculated Area: 177 sq. ft
Included: Yes

Heated: Yes
Finished: Yes
Enclosed: Yes
Contiguous: Yes
Permitted: Yes
Wet space: No
Addition: No
Conversion: No

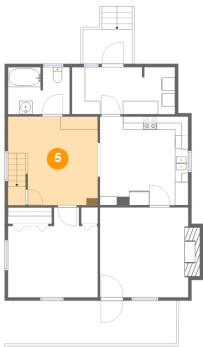
4 Floor 1 - Laundry



Max Dimensions: 15'6" x 7'1"
Calculated Area: 109 sq. ft
Included: Yes

Heated: Yes
Finished: Yes
Enclosed: Yes
Contiguous: Yes
Permitted: Yes
Wet space: No
Addition: No
Conversion: No

5 Floor 1 - Dining Room

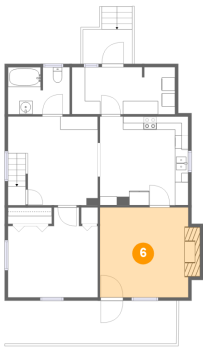


Max Dimensions: 13'6" x 13'4"
Calculated Area: 179 sq. ft
Included: Yes

Heated: Yes
Finished: Yes
Enclosed: Yes
Contiguous: Yes
Permitted: Yes
Wet space: No
Addition: No
Conversion: No

4152 Carr Rouse Road, Roanoke, Roanoke County, Virginia,
United States, 24014

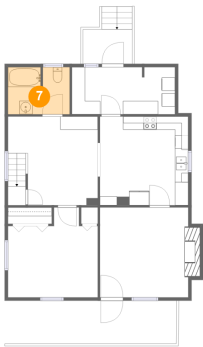
6 Floor 1 - Living Room



Max Dimensions: 13'3" x 13'6"
Calculated Area: 193 sq. ft
Included: Yes

Heated: Yes
Finished: Yes
Enclosed: Yes
Contiguous: Yes
Permitted: Yes
Wet space: No
Addition: No
Conversion: No

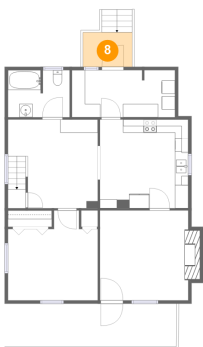
7 Floor 1 - Bath



Max Dimensions: 9'3" x 7'1"
Calculated Area: 65 sq. ft
Included: Yes

Heated: Yes
Finished: Yes
Enclosed: Yes
Contiguous: Yes
Permitted: Yes
Wet space: Yes
Addition: No
Conversion: No

8 Floor 1 - Deck

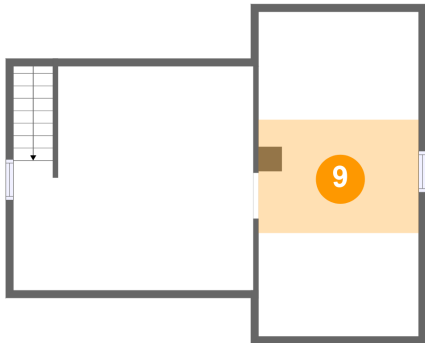


Max Dimensions: 7'5" x 5'2"
Calculated Area: 38 sq. ft
Included: No

Heated: No
Finished: Yes
Enclosed: No
Contiguous: Yes
Permitted: Yes
Wet space: No
Addition: No
Conversion: No

4152 Carr Rouse Road, Roanoke, Roanoke County, Virginia,
United States, 24014

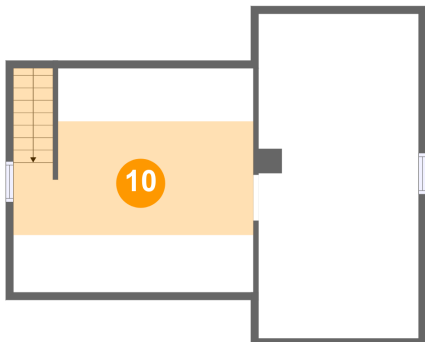
9 Floor 2 - Bedroom



Max Dimensions: 10'9" x 21'9"
Calculated Area: 81 sq. ft
Included: Yes

Heated: Yes
Finished: Yes
Enclosed: Yes
Contiguous: Yes
Permitted: Yes
Wet space: No
Addition: No
Conversion: No

10 Floor 2 - Bedroom



Max Dimensions: 16'1" x 15'0"
Calculated Area: 130 sq. ft
Included: Yes

Heated: Yes
Finished: Yes
Enclosed: Yes
Contiguous: Yes
Permitted: Yes
Wet space: No
Addition: No
Conversion: No