


Home report


248 Rockingham Road, Auburn, Rockingham County, New Hampshire, United States, 03032




Property summary




0
Garages



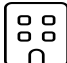
4
Bedrooms




1
Bathrooms




0
Half baths



3
Floors



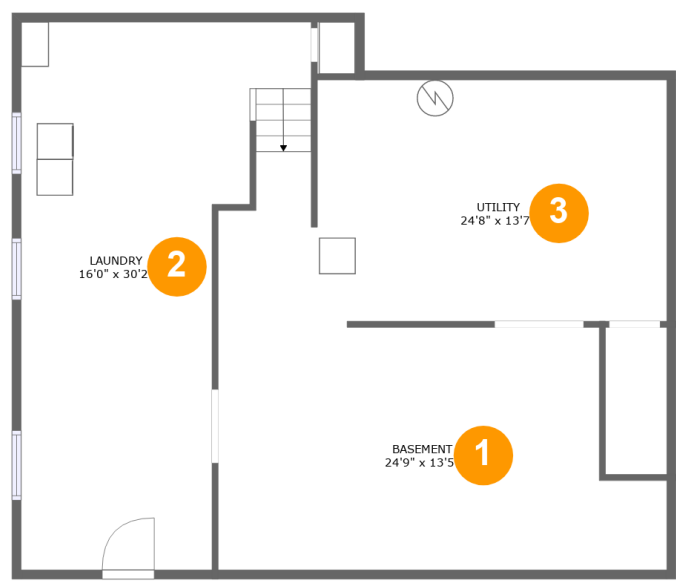
1,690
Gross living
area sqft



3,254
Total sqft

Home report

248 Rockingham Road, Auburn, Rockingham County, New Hampshire, United States, 03032



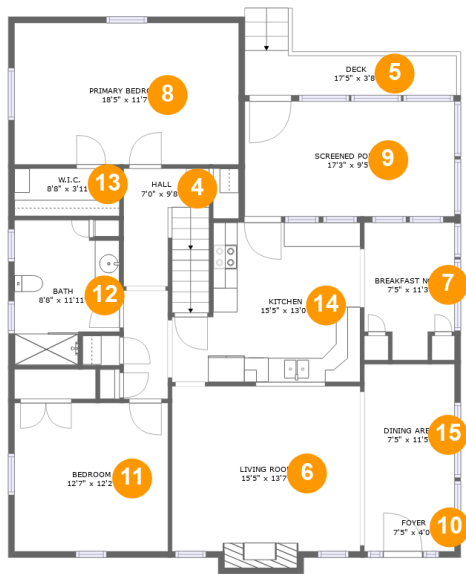
Room dimensions

Floor 1 Total sqft: 1084 Living area: 0

#		Dimensions	sqft	Counted as living area
1	Basement	24'9" x 13'5"	299 sq. ft	No
2	Laundry	16'0" x 30'2"	361 sq. ft	No
3	Utility	24'8" x 13'7"	301 sq. ft	No

Home report

248 Rockingham Road, Auburn, Rockingham County, New Hampshire, United States, 03032



Room dimensions

Floor 2 Total sqft: 1611 Living area: 1365

#		Dimensions	sqft	Counted as living area
4	Hall	7'0" x 9'8"	73 sq. ft	Yes
5	Deck	17'5" x 3'8"	70 sq. ft	No
6	Living Room	15'5" x 13'7"	217 sq. ft	Yes
7	Breakfast Nook	7'5" x 11'3"	73 sq. ft	Yes
8	Primary Bedroom	18'5" x 11'7"	214 sq. ft	Yes
9	Screened Porch	17'3" x 9'5"	163 sq. ft	No
10	Foyer	7'5" x 4'0"	29 sq. ft	Yes
11	Bedroom	12'7" x 12'2"	153 sq. ft	Yes
12	Bath	8'8" x 11'11"	89 sq. ft	Yes
13	W.I.C.	8'8" x 3'11"	34 sq. ft	Yes
14	Kitchen	15'5" x 13'0"	178 sq. ft	Yes

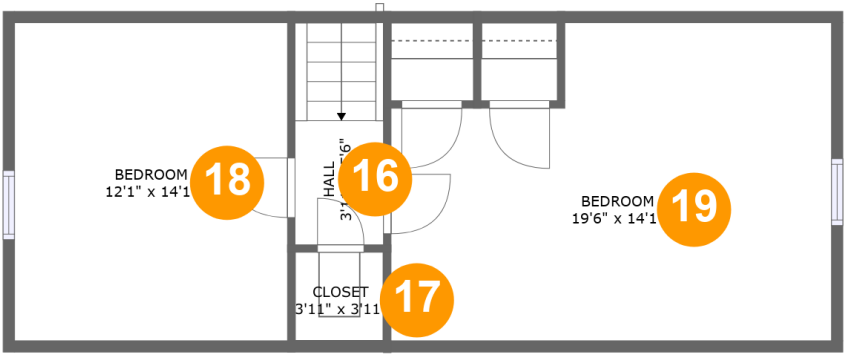
Home report

248 Rockingham Road, Auburn, Rockingham County, New Hampshire, United States, 03032

#		Dimensions	sqft	Counted as living area
15	Dining Area	7'5" x 11'5"	84 sq. ft	Yes

Home report

248 Rockingham Road, Auburn, Rockingham County, New Hampshire, United States, 03032

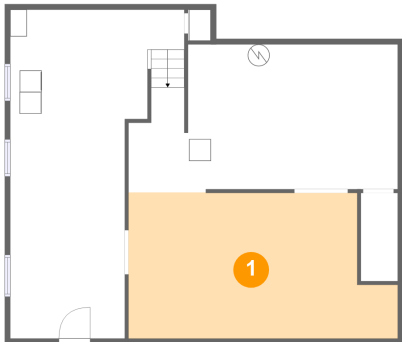


Room dimensions

Floor 3 Total sqft: 559 Living area: 325

#		Dimensions	sqft	Counted as living area
16	Hall	3'11" x 5'6"	38 sq. ft	Yes
17	Closet	3'11" x 3'11"	4 sq. ft	Yes
18	Bedroom	12'1" x 14'1"	101 sq. ft	Yes
19	Bedroom	19'6" x 14'1"	155 sq. ft	Yes

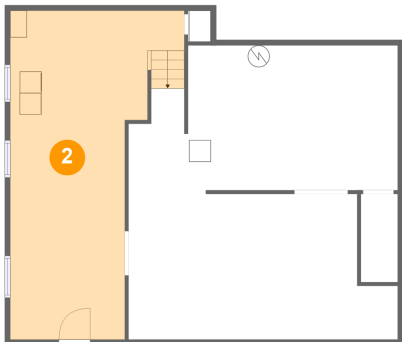
1 Floor 1 - Basement



Dimensions: 24'9" x 13'5"
Area: 299 sq. ft
Counted as living area: No

Heated: Yes
Finished: No
Enclosed: Yes
Contiguous: Yes
Permitted: Yes
Wet space: No
Addition: No
Conversion: No

2 Floor 1 - Laundry

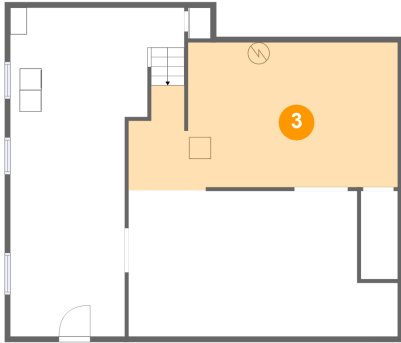


Dimensions: 16'0" x 30'2"
Area: 361 sq. ft
Counted as living area: No

Heated: Yes
Finished: No
Enclosed: Yes
Contiguous: Yes
Permitted: Yes
Wet space: No
Addition: No
Conversion: No

248 Rockingham Road, Auburn, Rockingham County, New Hampshire, United States, 03032

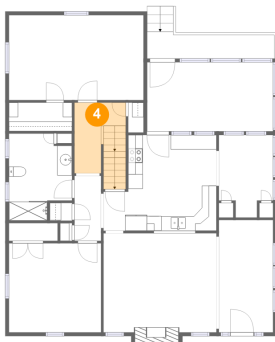
3 Floor 1 - Utility



Dimensions: 24'8" x 13'7"
Area: 301 sq. ft
Counted as living area: No

Heated: Yes
Finished: No
Enclosed: Yes
Contiguous: Yes
Permitted: Yes
Wet space: No
Addition: No
Conversion: No

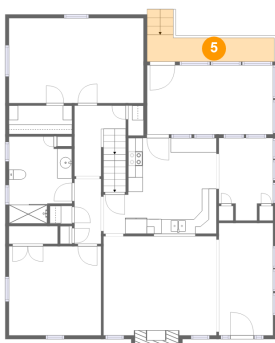
4 Floor 2 - Hall



Dimensions: 7'0" x 9'8"
Area: 73 sq. ft
Counted as living area: Yes

Heated: Yes
Finished: Yes
Enclosed: Yes
Contiguous: Yes
Permitted: Yes
Wet space: No
Addition: No
Conversion: No

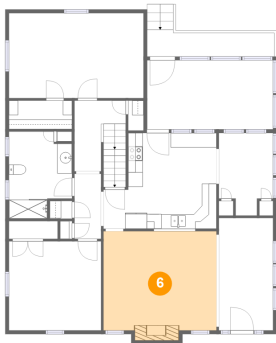
5 Floor 2 - Deck



Dimensions: 17'5" x 3'8"
Area: 70 sq. ft
Counted as living area: No

Heated: No
Finished: Yes
Enclosed: No
Contiguous: No
Permitted: Yes
Wet space: No
Addition: No
Conversion: No

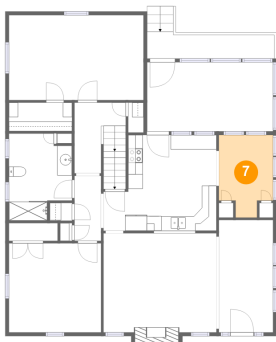
6 Floor 2 - Living Room



Dimensions: 15'5" x 13'7"
Area: 217 sq. ft
Counted as living area: Yes

Heated: Yes
Finished: Yes
Enclosed: Yes
Contiguous: Yes
Permitted: Yes
Wet space: No
Addition: No
Conversion: No

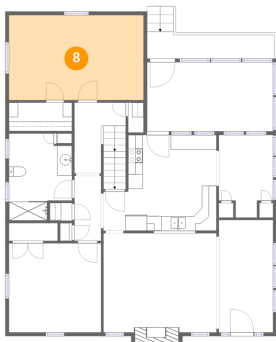
7 Floor 2 - Breakfast Nook



Dimensions: 7'5" x 11'3"
Area: 73 sq. ft
Counted as living area: Yes

Heated: Yes
Finished: Yes
Enclosed: Yes
Contiguous: Yes
Permitted: Yes
Wet space: No
Addition: No
Conversion: No

8 Floor 2 - Primary Bedroom

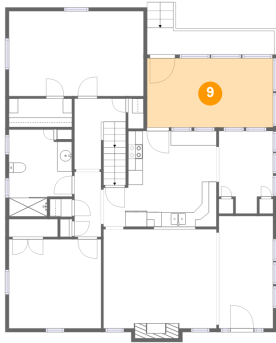


Dimensions: 18'5" x 11'7"
Area: 214 sq. ft
Counted as living area: Yes

Heated: Yes
Finished: Yes
Enclosed: Yes
Contiguous: Yes
Permitted: Yes
Wet space: No
Addition: No
Conversion: No

248 Rockingham Road, Auburn, Rockingham County, New Hampshire, United States, 03032

9 Floor 2 - Screened Porch



Dimensions: 17'3" x 9'5"
Area: 163 sq. ft
Counted as living area: No

Heated: No
Finished: Yes
Enclosed: No
Contiguous: Yes
Permitted: Yes
Wet space: No
Addition: No
Conversion: No

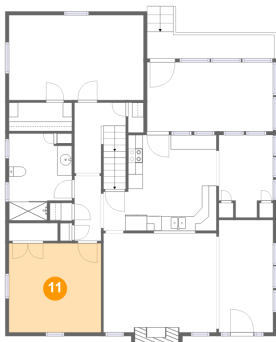
10 Floor 2 - Foyer



Dimensions: 7'5" x 4'0"
Area: 29 sq. ft
Counted as living area: Yes

Heated: Yes
Finished: Yes
Enclosed: Yes
Contiguous: Yes
Permitted: Yes
Wet space: No
Addition: No
Conversion: No

11 Floor 2 - Bedroom

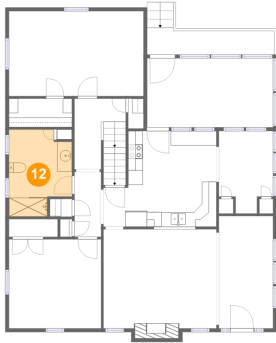


Dimensions: 12'7" x 12'2"
Area: 153 sq. ft
Counted as living area: Yes

Heated: Yes
Finished: Yes
Enclosed: Yes
Contiguous: Yes
Permitted: Yes
Wet space: No
Addition: No
Conversion: No

248 Rockingham Road, Auburn, Rockingham County, New Hampshire, United States, 03032

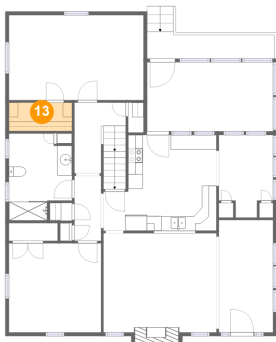
12 Floor 2 - Bath



Dimensions: 8'8" x 11'11"
Area: 89 sq. ft
Counted as living area: Yes

Heated: Yes
Finished: Yes
Enclosed: Yes
Contiguous: Yes
Permitted: Yes
Wet space: Yes
Addition: No
Conversion: No

13 Floor 2 - W.I.C.



Dimensions: 8'8" x 3'11"
Area: 34 sq. ft
Counted as living area: Yes

Heated: Yes
Finished: Yes
Enclosed: Yes
Contiguous: Yes
Permitted: Yes
Wet space: No
Addition: No
Conversion: No

14 Floor 2 - Kitchen

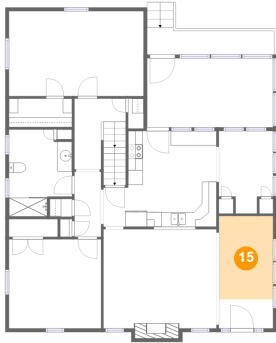


Dimensions: 15'5" x 13'0"
Area: 178 sq. ft
Counted as living area: Yes

Heated: Yes
Finished: Yes
Enclosed: Yes
Contiguous: Yes
Permitted: Yes
Wet space: No
Addition: No
Conversion: No

248 Rockingham Road, Auburn, Rockingham County, New Hampshire, United States, 03032

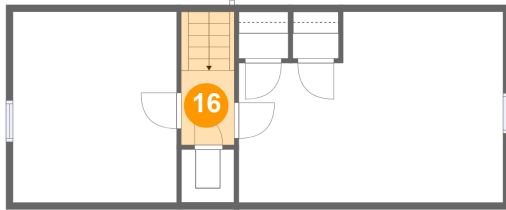
15 Floor 2 - Dining Area



Dimensions: 7'5" x 11'5"
Area: 84 sq. ft
Counted as living area: Yes

Heated: Yes
Finished: Yes
Enclosed: Yes
Contiguous: Yes
Permitted: Yes
Wet space: No
Addition: No
Conversion: No

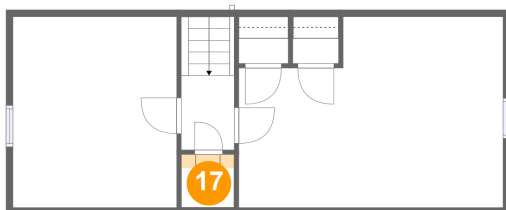
16 Floor 3 - Hall



Dimensions: 3'11" x 5'6"
Area: 38 sq. ft
Counted as living area: Yes

Heated: Yes
Finished: Yes
Enclosed: Yes
Contiguous: Yes
Permitted: Yes
Wet space: No
Addition: No
Conversion: No

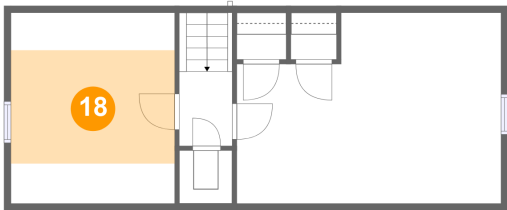
17 Floor 3 - Closet



Dimensions: 3'11" x 3'11"
Area: 4 sq. ft
Counted as living area: Yes

Heated: Yes
Finished: Yes
Enclosed: Yes
Contiguous: Yes
Permitted: Yes
Wet space: No
Addition: No
Conversion: No

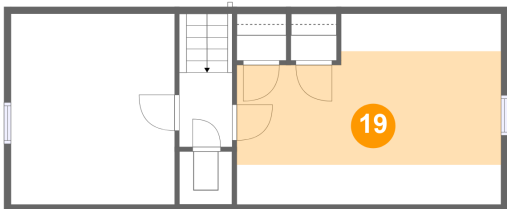
18 Floor 3 - Bedroom



Dimensions: 12'1" x 14'1"
Area: 101 sq. ft
Counted as living area: Yes

Heated: Yes
Finished: Yes
Enclosed: Yes
Contiguous: Yes
Permitted: Yes
Wet space: No
Addition: No
Conversion: No

19 Floor 3 - Bedroom



Dimensions: 19'6" x 14'1"
Area: 155 sq. ft
Counted as living area: Yes

Heated: Yes
Finished: Yes
Enclosed: Yes
Contiguous: Yes
Permitted: Yes
Wet space: No
Addition: No
Conversion: No