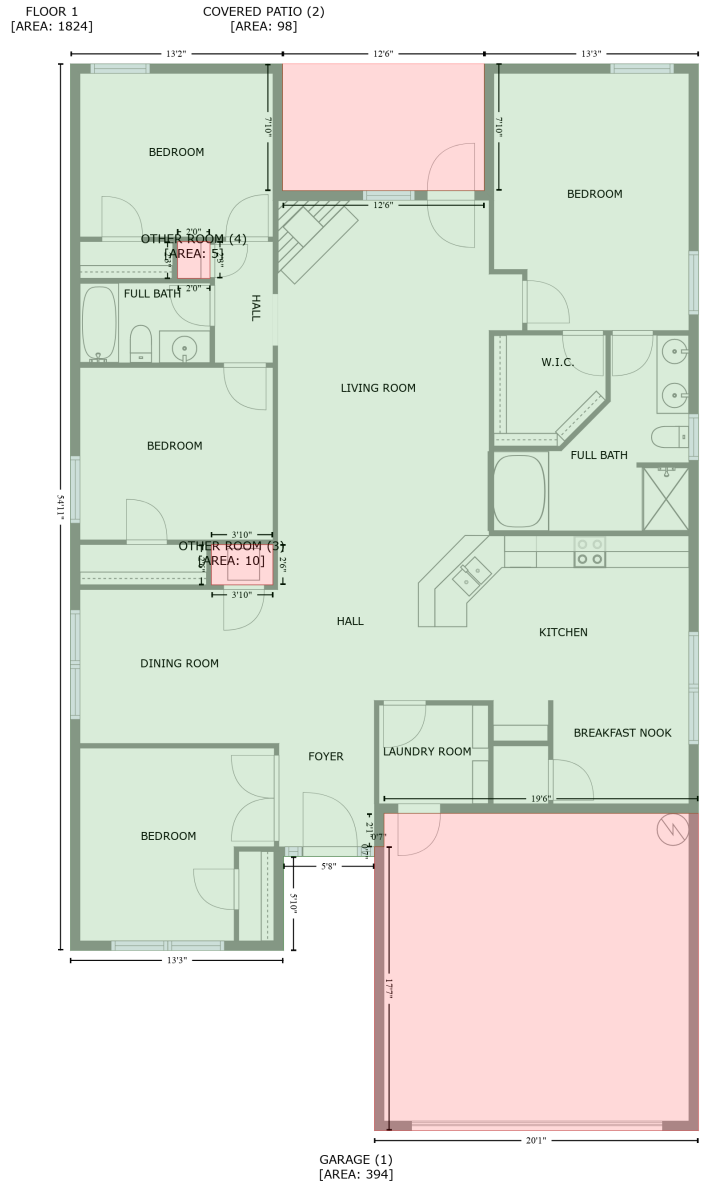


118 Herrick Drive Southwest, Lake Forest, Huntsville, Madison County, Alabama, United States, 35824

Gross Living Area: 1824 sq. ft



Space	Area (sq. ft)	Calculation
FLOOR 1 (Living area)	1824	Coordinate Polygon Area Algorithm using inches $-((178 + 178) * (114 - 208.3) + (178 + 328.1) * (208.3 - 208.3) + (328.1 + 328.1) * (208.3 - 114) + (328.1 + 487.5) * (114 - 114) + (487.5 + 487.5) * (114 - 671.2) + (487.5 + 253.5) * (671.2 - 671.2) + (253.5 + 253.5) * (671.2 - 696) + (253.5 + 246.4) * (696 - 696) + (246.4 + 246.4) * (696 - 703.2) + (246.4 + 178.8) * (703.2 - 703.2) + (178.8 + 178.8) * (703.2 - 773.2) + (178.8 + 20.2) * (773.2 - 773.2) + (20.2 + 20.2) * (773.2 - 114) + (20.2 + 178) * (114 - 114)) * 0.5 * 0.00694 + -((170.9 + 125) * (471.4 - 471.4) + (125 + 125) * (471.4 - 501.4) + (125 + 170.9) * (501.4 - 501.4) + (170.9 + 170.9) * (501.4 - 471.4)) * 0.5 * 0.00694 + -((124.1 + 99.8) * (246.2 - 246.2) + (99.8 + 99.8) * (246.2 - 246.2) + (99.8 + 99.8) * (246.2 - 246.2)) * 0.5 * 0.00694$

118 Herrick Drive Southwest, Lake Forest, Huntsville, Madison County, Alabama, United States, 35824

Gross Living Area: 1824 sq. ft

Space	Area (sq. ft)	Calculation <small>Coordinate Polygon Area Algorithm using inches</small>
		$(246.2 - 273.6) + (99.8 + 124.1) * (273.6 - 273.6) + (124.1 + 124.1) * (273.6 - 246.2)) * 0.5 * 0.00694$
GARAGE (Non-living area)	394	$-((487.5 + 487.5) * (671.2 - 907.1) + (487.5 + 246.4) * (907.1 - 907.1) + (246.4 + 246.4) * (907.1 - 696) + (246.4 + 253.5) * (696 - 696) + (253.5 + 253.5) * (696 - 671.2) + (253.5 + 487.5) * (671.2 - 671.2)) * 0.5 * 0.00694$
COVERED PATIO (Non-living area)	98	$-((328.1 + 328.1) * (114 - 208.3) + (328.1 + 178) * (208.3 - 208.3) + (178 + 178) * (208.3 - 114) + (178 + 328.1) * (114 - 114)) * 0.5 * 0.00694$
OTHER ROOM (Non-living area)	10	$-((170.9 + 170.9) * (471.4 - 501.4) + (170.9 + 125) * (501.4 - 501.4) + (125 + 125) * (501.4 - 471.4) + (125 + 170.9) * (471.4 - 471.4)) * 0.5 * 0.00694$
OTHER ROOM (Non-living area)	5	$-((124.1 + 124.1) * (246.2 - 273.6) + (124.1 + 99.8) * (273.6 - 273.6) + (99.8 + 99.8) * (273.6 - 246.2) + (99.8 + 124.1) * (246.2 - 246.2)) * 0.5 * 0.00694$