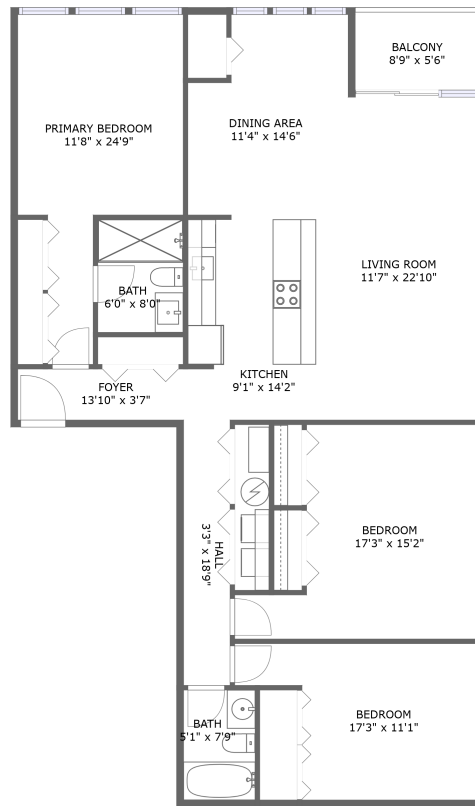



# 10700 Coastal Highway, Ocean City, Worcester County, Maryland, United States, 21842, 1208




FLOOR 1

## Property summary


 **0** Garages

 **3** Bedrooms

 **2** Bathrooms

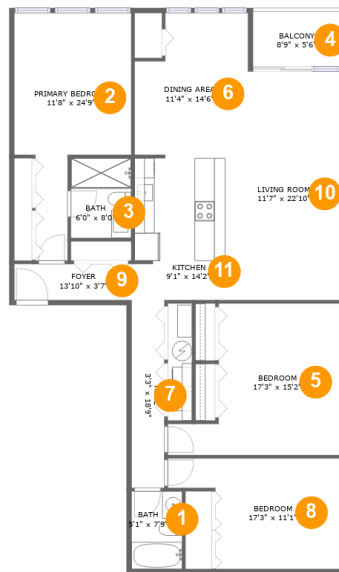
 **0** Half baths

 **1** Floors

 **1,444**  
Gross living  
area sqft

 **1,492**  
Total sqft

# 10700 Coastal Highway, Ocean City, Worcester County, Maryland, United States, 21842, 1208



## Room dimensions

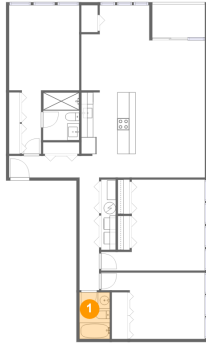
Floor 1

Total sqft: 1492 Living area: 1444

#		Dimensions	sqft	Counted as living area
1	Bath	5'1" x 7'9"	39 sq. ft	Yes
2	Bedroom	11'8" x 24'9"	200 sq. ft	Yes
3	Bath	6'0" x 8'0"	48 sq. ft	Yes
4	Outdoor	8'9" x 5'6"	48 sq. ft	No
5	Bedroom	17'3" x 15'2"	201 sq. ft	Yes
6	Dining Room	11'4" x 14'6"	149 sq. ft	Yes
7	Hall	3'3" x 18'9"	62 sq. ft	Yes
8	Bedroom	17'3" x 11'1"	152 sq. ft	Yes
9	Entry	13'10" x 3'7"	50 sq. ft	Yes
10	Living Room	11'7" x 22'10"	244 sq. ft	Yes
11	Kitchen	9'1" x 14'2"	121 sq. ft	Yes

# 10700 Coastal Highway, Ocean City, Worcester County, Maryland, United States, 21842, 1208

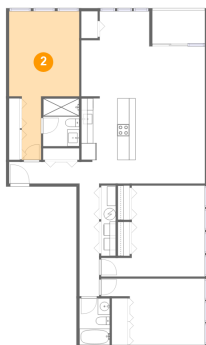
## 1 Floor 1 - Bath



Dimensions: 5'1" x 7'9"  
Area: 39 sq. ft  
Counted as living area: Yes

Heated: Yes  
Finished: Yes  
Enclosed: Yes  
Contiguous: Yes  
Permitted: Yes  
Wet space: Yes  
Addition: No  
Conversion: No

## 2 Floor 1 - Bedroom



Dimensions: 11'8" x 24'9"  
Area: 200 sq. ft  
Counted as living area: Yes

Heated: Yes  
Finished: Yes  
Enclosed: Yes  
Contiguous: Yes  
Permitted: Yes  
Wet space: No  
Addition: No  
Conversion: No

# 10700 Coastal Highway, Ocean City, Worcester County, Maryland, United States, 21842, 1208

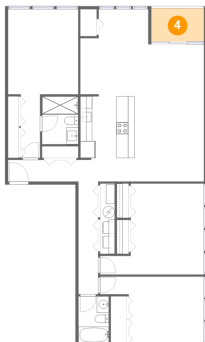
## 3 Floor 1 - Bath



Dimensions: 6'0" x 8'0"  
Area: 48 sq. ft  
Counted as living area: Yes

Heated: Yes  
Finished: Yes  
Enclosed: Yes  
Contiguous: Yes  
Permitted: Yes  
Wet space: Yes  
Addition: No  
Conversion: No

## 4 Floor 1 - Outdoor



Dimensions: 8'9" x 5'6"  
Area: 48 sq. ft  
Counted as living area: No

Heated: No  
Finished: Yes  
Enclosed: No  
Contiguous: Yes  
Permitted: Yes  
Wet space: No  
Addition: No  
Conversion: No

## 5 Floor 1 - Bedroom

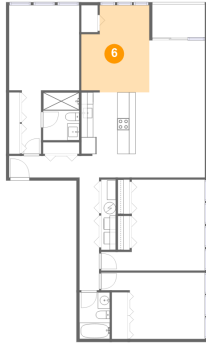


Dimensions: 17'3" x 15'2"  
Area: 201 sq. ft  
Counted as living area: Yes

Heated: Yes  
Finished: Yes  
Enclosed: Yes  
Contiguous: Yes  
Permitted: Yes  
Wet space: No  
Addition: No  
Conversion: No

# 10700 Coastal Highway, Ocean City, Worcester County, Maryland, United States, 21842, 1208

## 6 Floor 1 - Dining Room



Dimensions: 11'4" x 14'6"  
Area: 149 sq. ft  
Counted as living area: Yes

Heated: Yes  
Finished: Yes  
Enclosed: Yes  
Contiguous: Yes  
Permitted: Yes  
Wet space: No  
Addition: No  
Conversion: No

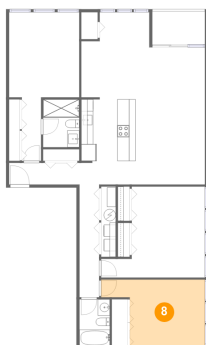
## 7 Floor 1 - Hall



Dimensions: 3'3" x 18'9"  
Area: 62 sq. ft  
Counted as living area: Yes

Heated: Yes  
Finished: Yes  
Enclosed: Yes  
Contiguous: Yes  
Permitted: Yes  
Wet space: No  
Addition: No  
Conversion: No

## 8 Floor 1 - Bedroom

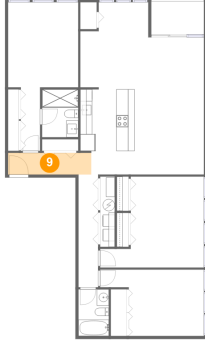


Dimensions: 17'3" x 11'1"  
Area: 152 sq. ft  
Counted as living area: Yes

Heated: Yes  
Finished: Yes  
Enclosed: Yes  
Contiguous: Yes  
Permitted: Yes  
Wet space: No  
Addition: No  
Conversion: No

# 10700 Coastal Highway, Ocean City, Worcester County, Maryland, United States, 21842, 1208

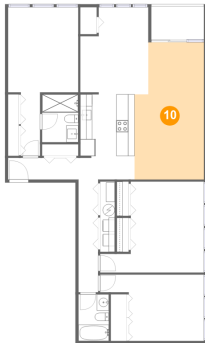
## 9 Floor 1 - Entry



Dimensions: 13'10" x 3'7"  
Area: 50 sq. ft  
Counted as living area: Yes

Heated: Yes  
Finished: Yes  
Enclosed: Yes  
Contiguous: Yes  
Permitted: Yes  
Wet space: No  
Addition: No  
Conversion: No

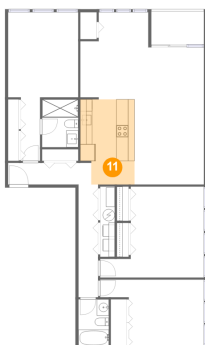
## 10 Floor 1 - Living Room



Dimensions: 11'7" x 22'10"  
Area: 244 sq. ft  
Counted as living area: Yes

Heated: Yes  
Finished: Yes  
Enclosed: Yes  
Contiguous: Yes  
Permitted: Yes  
Wet space: No  
Addition: No  
Conversion: No

## 11 Floor 1 - Kitchen



Dimensions: 9'1" x 14'2"  
Area: 121 sq. ft  
Counted as living area: Yes

Heated: Yes  
Finished: Yes  
Enclosed: Yes  
Contiguous: Yes  
Permitted: Yes  
Wet space: No  
Addition: No  
Conversion: No