


Home report


22301 Forest Ave,Cassopolis,MI,US




Property summary




**0** Garages




**4** Bedrooms




**2** Bathrooms




**1** Half baths



**3** Floors



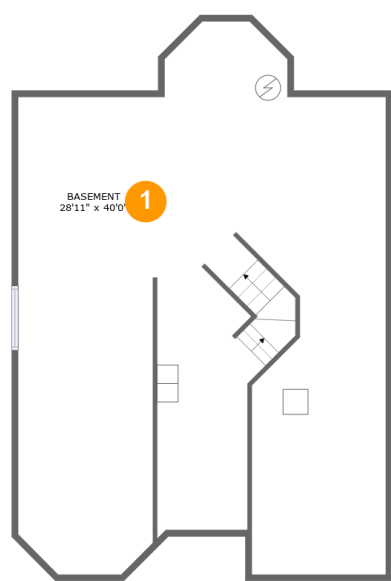
**2,294** Gross living area sqft



**3,666** Total sqft

Home report

22301 Forest Ave,Cassopolis,MI,US



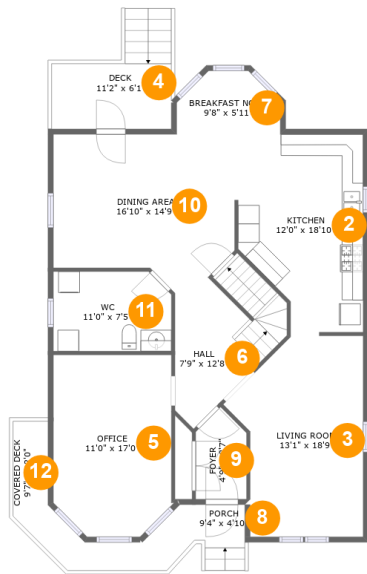
Room dimensions

Floor 1 Total sqft: 1174    Living area: 0

#		Dimensions	sqft	Counted as living area
1	Basement	28'11" x 40'0"	1085 sq. ft	No

Home report

22301 Forest Ave,Cassopolis,MI,US



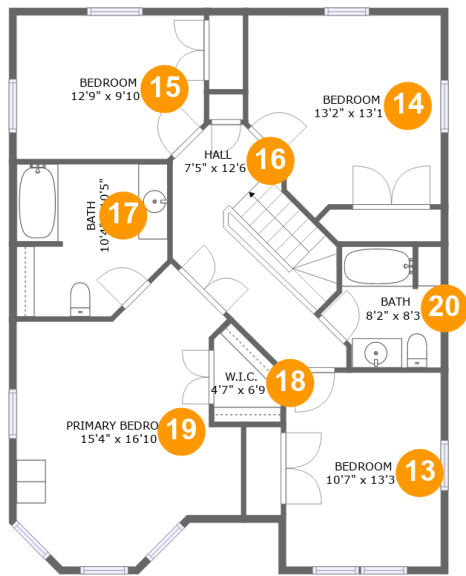
Room dimensions

Floor 2 Total sqft: 1371    Living area: 1173

#		Dimensions	sqft	Counted as living area
2	Kitchen	12'0" x 18'10"	192 sq. ft	Yes
3	Living Room	13'1" x 18'9"	197 sq. ft	Yes
4	Deck	11'2" x 6'1"	90 sq. ft	No
5	Office	11'0" x 17'0"	178 sq. ft	Yes
6	Hall	7'9" x 12'8"	103 sq. ft	Yes
7	Breakfast Nook	9'8" x 5'11"	49 sq. ft	Yes
8	Porch	9'4" x 4'10"	46 sq. ft	No
9	Foyer	4'9" x 8'7"	35 sq. ft	Yes
10	Dining Area	16'10" x 14'9"	221 sq. ft	Yes
11	WC	11'0" x 7'5"	80 sq. ft	Yes
12	Covered Deck	9'7" x 12'0"	62 sq. ft	No

Home report

22301 Forest Ave,Cassopolis,MI,US

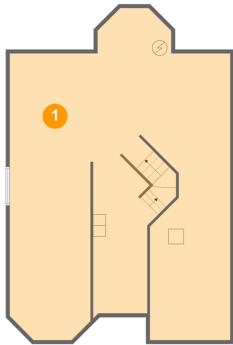


Room dimensions

Floor 3 Total sqft: 1121    Living area: 1121

#		Dimensions	sqft	Counted as living area
13	Bedroom	10'7" x 13'3"	140 sq. ft	Yes
14	Bedroom	13'2" x 13'1"	159 sq. ft	Yes
15	Bedroom	12'9" x 9'10"	122 sq. ft	Yes
16	Hall	7'5" x 12'6"	125 sq. ft	Yes
17	Bath	10'4" x 10'5"	99 sq. ft	Yes
18	W.I.C.	4'7" x 6'9"	25 sq. ft	Yes
19	Primary Bedroom	15'4" x 16'10"	232 sq. ft	Yes
20	Bath	8'2" x 8'3"	56 sq. ft	Yes

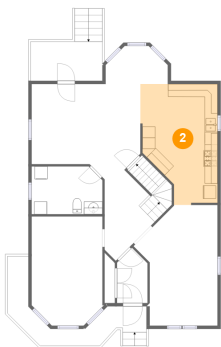
1 Floor 1 - Basement



Dimensions: 28'11" x 40'0"  
Area: 1085 sq. ft  
Counted as living area: No

Heated: Yes  
Finished: No  
Enclosed: Yes  
Contiguous: Yes  
Permitted: Yes  
Wet space: No  
Addition: No  
Conversion: No

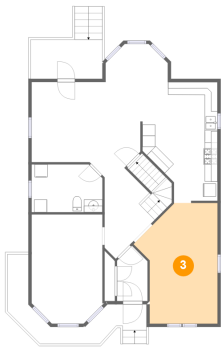
2 Floor 2 - Kitchen



Dimensions: 12'0" x 18'10"  
Area: 192 sq. ft  
Counted as living area: Yes

Heated: Yes  
Finished: Yes  
Enclosed: Yes  
Contiguous: Yes  
Permitted: Yes  
Wet space: No  
Addition: No  
Conversion: No

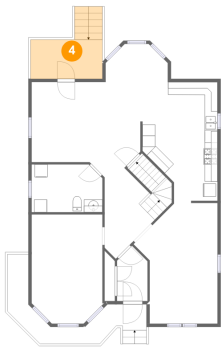
3 Floor 2 - Living Room



Dimensions: 13'1" x 18'9"  
Area: 197 sq. ft  
Counted as living area: Yes

Heated: Yes  
Finished: Yes  
Enclosed: Yes  
Contiguous: Yes  
Permitted: Yes  
Wet space: No  
Addition: No  
Conversion: No

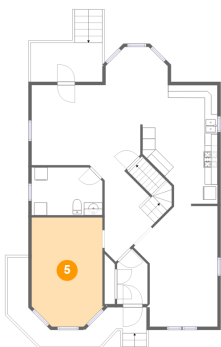
4 Floor 2 - Deck



Dimensions: 11'2" x 6'1"  
Area: 90 sq. ft  
Counted as living area: No

Heated: No  
Finished: Yes  
Enclosed: No  
Contiguous: Yes  
Permitted: Yes  
Wet space: No  
Addition: No  
Conversion: No

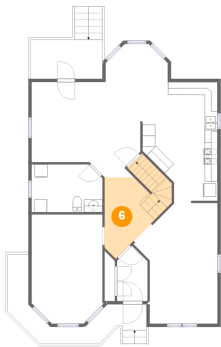
5 Floor 2 - Office



Dimensions: 11'0" x 17'0"  
Area: 178 sq. ft  
Counted as living area: Yes

Heated: Yes  
Finished: Yes  
Enclosed: Yes  
Contiguous: Yes  
Permitted: Yes  
Wet space: No  
Addition: No  
Conversion: No

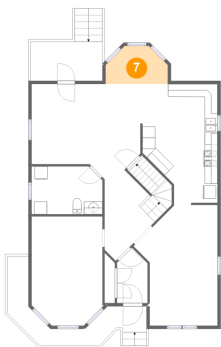
6 Floor 2 - Hall



Dimensions: 7'9" x 12'8"  
Area: 103 sq. ft  
Counted as living area: Yes

Heated: Yes  
Finished: Yes  
Enclosed: Yes  
Contiguous: Yes  
Permitted: Yes  
Wet space: No  
Addition: No  
Conversion: No

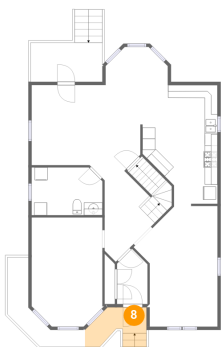
7 Floor 2 - Breakfast Nook



Dimensions: 9'8" x 5'11"  
Area: 49 sq. ft  
Counted as living area: Yes

Heated: Yes  
Finished: Yes  
Enclosed: Yes  
Contiguous: Yes  
Permitted: Yes  
Wet space: No  
Addition: No  
Conversion: No

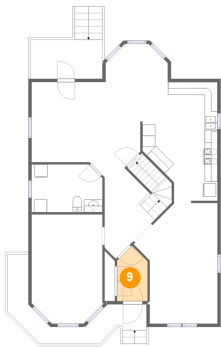
8 Floor 2 - Porch



Dimensions: 9'4" x 4'10"  
Area: 46 sq. ft  
Counted as living area: No

Heated: No  
Finished: Yes  
Enclosed: No  
Contiguous: Yes  
Permitted: Yes  
Wet space: No  
Addition: No  
Conversion: No

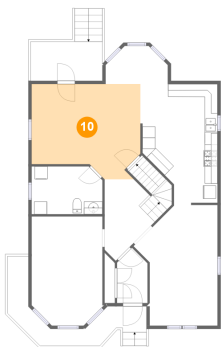
9 Floor 2 - Foyer



Dimensions: 4'9" x 8'7"  
Area: 35 sq. ft  
Counted as living area: Yes

Heated: Yes  
Finished: Yes  
Enclosed: Yes  
Contiguous: Yes  
Permitted: Yes  
Wet space: No  
Addition: No  
Conversion: No

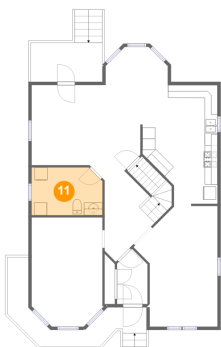
10 Floor 2 - Dining Area



Dimensions: 16'10" x 14'9"  
Area: 221 sq. ft  
Counted as living area: Yes

Heated: Yes  
Finished: Yes  
Enclosed: Yes  
Contiguous: Yes  
Permitted: Yes  
Wet space: No  
Addition: No  
Conversion: No

11 Floor 2 - WC



Dimensions: 11'0" x 7'5"  
Area: 80 sq. ft  
Counted as living area: Yes

Heated: Yes  
Finished: Yes  
Enclosed: Yes  
Contiguous: Yes  
Permitted: Yes  
Wet space: Yes  
Addition: No  
Conversion: No



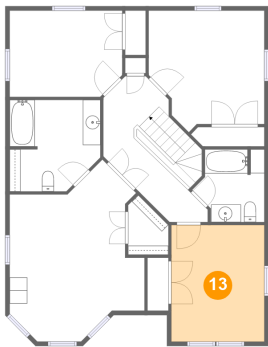
12 Floor 2 - Covered Deck



Dimensions: 9'7" x 12'0"  
Area: 62 sq. ft  
Counted as living area: No

Heated: No  
Finished: Yes  
Enclosed: No  
Contiguous: Yes  
Permitted: Yes  
Wet space: No  
Addition: No  
Conversion: No

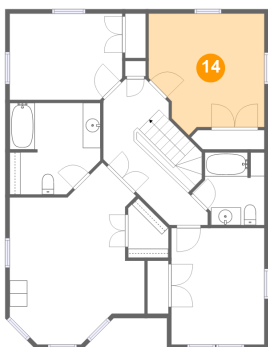
13 Floor 3 - Bedroom



Dimensions: 10'7" x 13'3"  
Area: 140 sq. ft  
Counted as living area: Yes

Heated: Yes  
Finished: Yes  
Enclosed: Yes  
Contiguous: Yes  
Permitted: Yes  
Wet space: No  
Addition: No  
Conversion: No

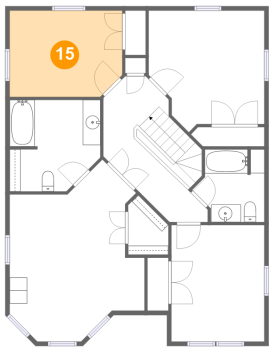
14 Floor 3 - Bedroom



Dimensions: 13'2" x 13'1"  
Area: 159 sq. ft  
Counted as living area: Yes

Heated: Yes  
Finished: Yes  
Enclosed: Yes  
Contiguous: Yes  
Permitted: Yes  
Wet space: No  
Addition: No  
Conversion: No

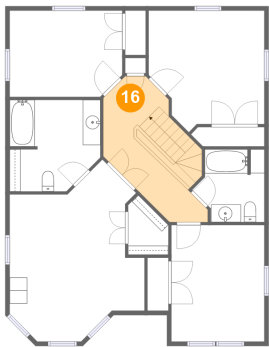
15 Floor 3 - Bedroom



Dimensions: 12'9" x 9'10"  
Area: 122 sq. ft  
Counted as living area: Yes

Heated: Yes  
Finished: Yes  
Enclosed: Yes  
Contiguous: Yes  
Permitted: Yes  
Wet space: No  
Addition: No  
Conversion: No

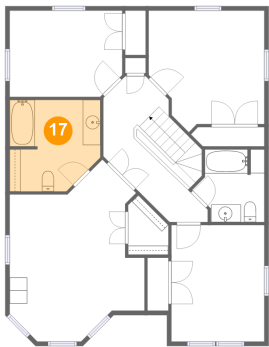
16 Floor 3 - Hall



Dimensions: 7'5" x 12'6"  
Area: 125 sq. ft  
Counted as living area: Yes

Heated: Yes  
Finished: Yes  
Enclosed: Yes  
Contiguous: Yes  
Permitted: Yes  
Wet space: No  
Addition: No  
Conversion: No

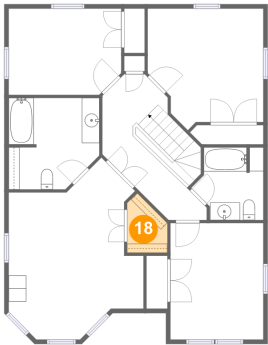
17 Floor 3 - Bath



Dimensions: 10'4" x 10'5"  
Area: 99 sq. ft  
Counted as living area: Yes

Heated: Yes  
Finished: Yes  
Enclosed: Yes  
Contiguous: Yes  
Permitted: Yes  
Wet space: Yes  
Addition: No  
Conversion: No

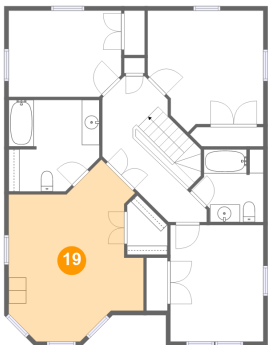
18 Floor 3 - W.I.C.



Dimensions: 4'7" x 6'9"  
Area: 25 sq. ft  
Counted as living area: Yes

Heated: Yes  
Finished: Yes  
Enclosed: Yes  
Contiguous: Yes  
Permitted: Yes  
Wet space: No  
Addition: No  
Conversion: No

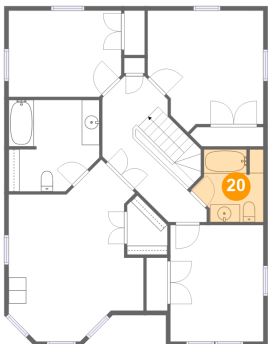
19 Floor 3 - Primary Bedroom



Dimensions: 15'4" x 16'10"  
Area: 232 sq. ft  
Counted as living area: Yes

Heated: Yes  
Finished: Yes  
Enclosed: Yes  
Contiguous: Yes  
Permitted: Yes  
Wet space: No  
Addition: No  
Conversion: No

20 Floor 3 - Bath



Dimensions: 8'2" x 8'3"  
Area: 56 sq. ft  
Counted as living area: Yes

Heated: Yes  
Finished: Yes  
Enclosed: Yes  
Contiguous: Yes  
Permitted: Yes  
Wet space: Yes  
Addition: No  
Conversion: No