



PRESENTING

# EAGLES REST MEADOW

657 N 400 ROAD  
OVERBROOK, KS 66524

38 +/- ACRE PARCEL

4 BED / 2 BATH 1920 BUNGALOW

DETACHED GARAGE, BARN, & STABLE

## Peaceful Country Living Meets Timeless Elegance on 38 Sprawling Acres

Nestled in a beautiful and peaceful rural setting, this exceptional 38-acre property offers the perfect blend of classic charm and endless possibilities. At its heart stands an inviting 1920 farmhouse, brimming with character and warmth. This picturesque home features 4 bedrooms and 2 bathrooms, providing plenty of room for family, guests, or a home office setup. Inside, you'll be captivated by the timeless craftsmanship on display—gorgeous original woodwork flows throughout the home, creating a sense of history and elegance. The updated kitchen combines modern functionality with rustic charm, offering ample space for cooking, entertaining, and gathering.

Recent updates include newer siding, enhancing curb appeal and energy efficiency while preserving the home's classic farmhouse look. Step outside and discover three fully functional outbuildings designed to support a variety of needs. A large detached garage/shop provides room for vehicles, tools, or hobby work, while the barn and stable offer excellent infrastructure for those interested in raising livestock or equestrian pursuits. With a water meter already on the property, cross-fencing in place, and ample pasture, this land is well-suited for cattle, horses, or other animals.

Whether you're dreaming of a hobby farm, a quiet country retreat, or a place to build a legacy, this property delivers. Located within the Baldwin City school district, the location is hard to beat, being only a short drive from Lawrence or Baldwin City. This rare combination of space, functionality, and classic style makes this 38-acre gem a must-see for anyone seeking the best of country living. Don't miss your opportunity to own a quiet, country retreat and create your own story in this idyllic setting.

**Directions:** From Lawrence, go South on Hwy 59, West on Hwy 56 to E 700 Rd, North 1 mile to N 400 Rd, West to property.

# HECK



785-917-5700



HECK.REALESTATE



KATIE@HECK.REALESTATE

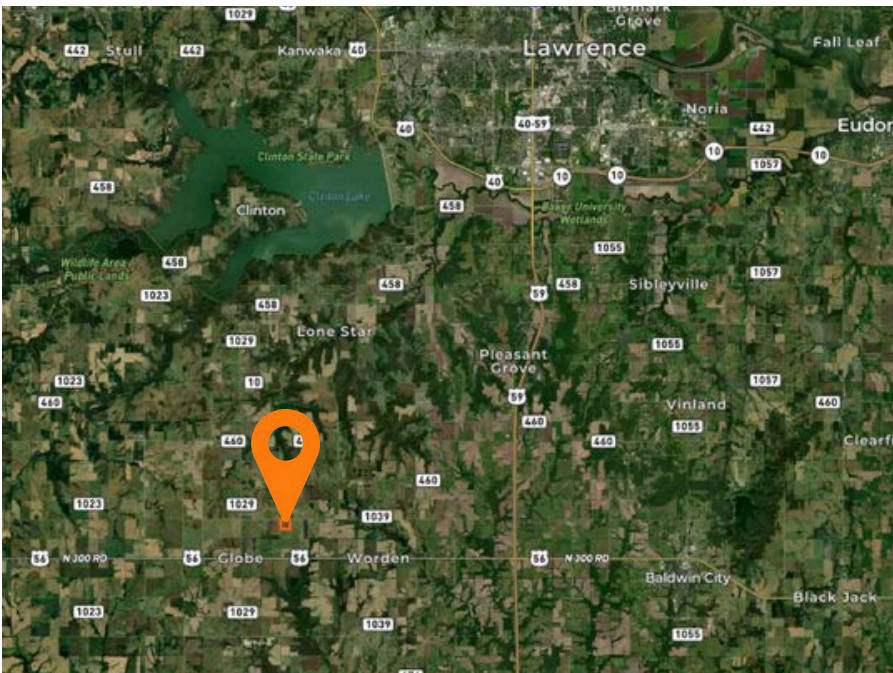












PRESENTED BY:

**Katie Moore**  
**HECK**

913-634-9010 Mobile  
785-917-5700 Office  
[Katie@heck.realestate](mailto:Katie@heck.realestate)

