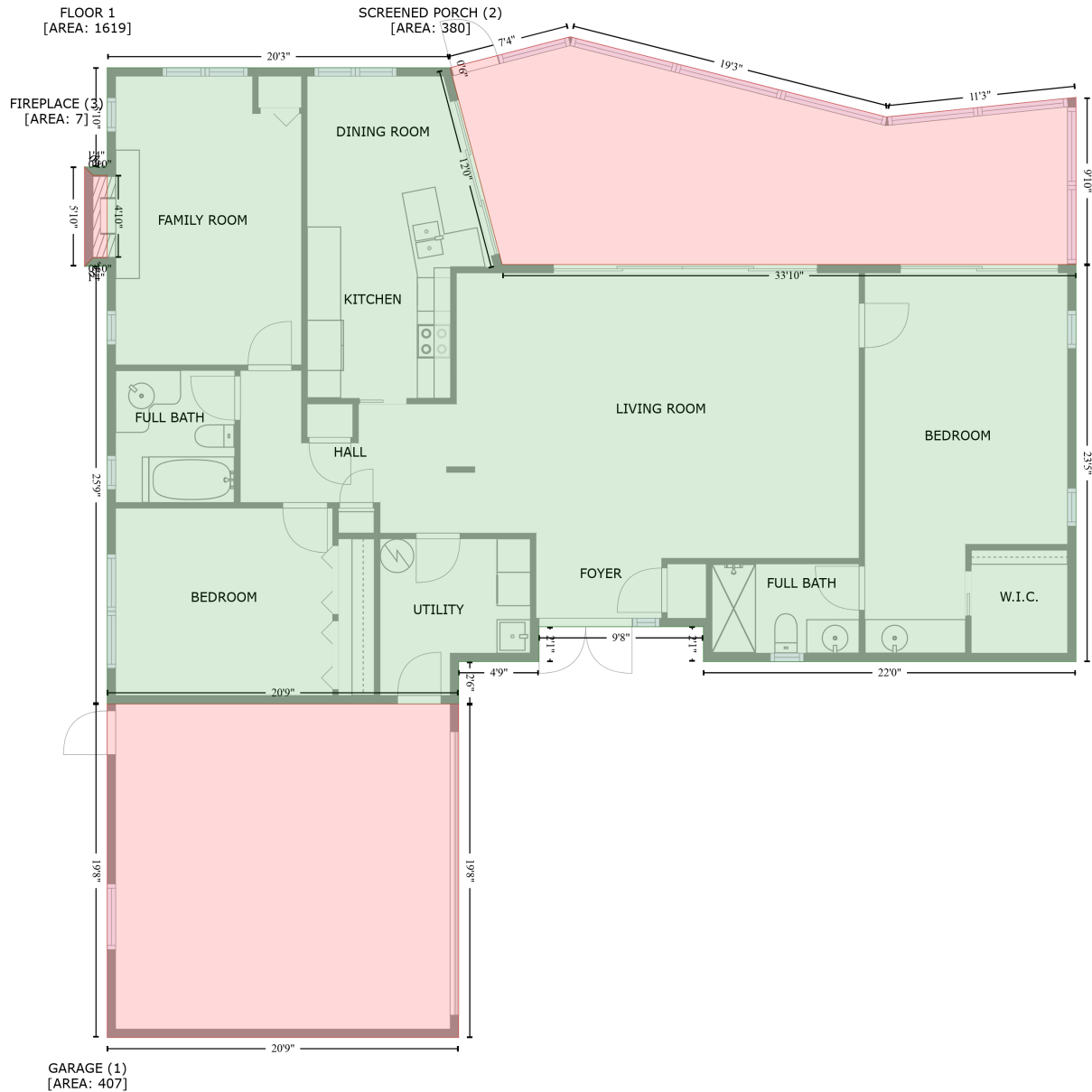


228 Palm Island Southwest, 700 Island Way, Clearwater Beach, Pinellas County, Florida, United States, 33767

Gross Living Area: 1619 sq. ft



Space	Area (sq. ft)	Calculation <small>Coordinate Polygon Area Algorithm using inches</small>
FLOOR 1 (Living area)	1619	$ \begin{aligned} & -((255 + 255.1) * (38.1 - 38.2) + (255.1 + 273.8) * (38.2 - 108.1) + (273.8 + 275.3) * (108.1 - \\ & 114.1) + (275.3 + 291.9) * (114.1 - 177.1) + (291.9 + 697.7) * (177.1 - 177.1) + (697.7 + 697.7) * \\ & (177.1 - 457.6) + (697.7 + 434.2) * (457.6 - 457.6) + (434.2 + 434.2) * (457.6 - 432.9) + (434.2 + \\ & 317.9) * (432.9 - 432.9) + (317.9 + 317.9) * (432.9 - 457.6) + (317.9 + 261.1) * (457.6 - 457.6) + \\ & (261.1 + 261.1) * (457.6 - 487.5) + (261.1 + 12.5) * (487.5 - 487.5) + (12.5 + 12.5) * (487.5 - \\ & 178.4) + (12.5 + -3.5) * (178.4 - 178.4) + (-3.5 + 2.5) * (178.4 - 172.4) + (2.5 + 12.5) * (172.4 - \\ & 172.4) + (12.5 + 12.5) * (172.4 - 114.1) + (12.5 + 2.5) * (114.1 - 114.1) + (2.5 + -3.5) * (114.1 - \end{aligned} $

228 Palm Island Southwest, 700 Island Way, Clearwater Beach, Pinellas County, Florida, United States, 33767

Gross Living Area: 1619 sq. ft

Space	Area (sq. ft)	Calculation <small>Coordinate Polygon Area Algorithm using inches</small>
		$108.1 + (-3.5 + 12.5) * (108.1 - 108.1) + (12.5 + 12.5) * (108.1 - 38.1) + (12.5 + 255) * (38.1 - 38.1) * 0.5 * 0.00694$
GARAGE (Non-living area)	407	$-((261.1 + 261.1) * (487.5 - 723.2) + (261.1 + 12.5) * (723.2 - 723.2) + (12.5 + 12.5) * (723.2 - 487.5) + (12.5 + 261.1) * (487.5 - 487.5)) * 0.5 * 0.00694$
SCREENED PORCH (Non-living area)	380	$-((339.9 + 563.7) * (16.2 - 72.9) + (563.7 + 697.7) * (72.9 - 59) + (697.7 + 697.7) * (59 - 177.1) + (697.7 + 291.9) * (177.1 - 177.1) + (291.9 + 256.5) * (177.1 - 43.9) + (256.5 + 255) * (43.9 - 38.1) + (255 + 339.9) * (38.1 - 16.2)) * 0.5 * 0.00694$
FIREPLACE (Non-living area)	7	$-((-3.5 + 2.5) * (108.1 - 114.1) + (2.5 + 12.5) * (114.1 - 114.1) + (12.5 + 12.5) * (114.1 - 172.4) + (12.5 + 2.5) * (172.4 - 172.4) + (2.5 + -3.5) * (172.4 - 178.4) + (-3.5 + -3.5) * (178.4 - 108.1)) * 0.5 * 0.00694$