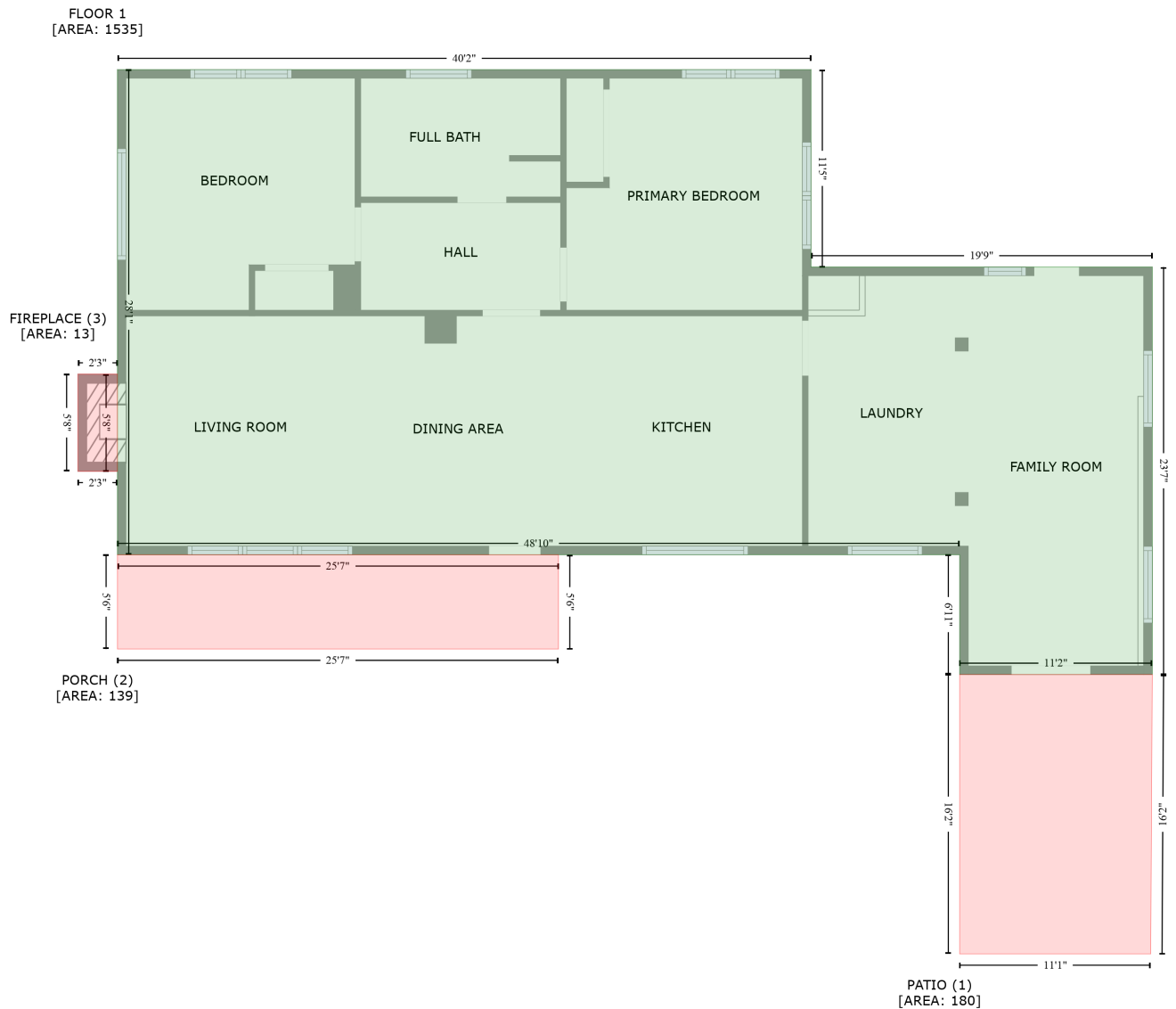


2073 Mauney Road, Bessemer City, Gaston County, North Carolina, United States, 28016

Gross Living Area: 1535 sq. ft



Space	Area (sq. ft)	Calculation <small>Coordinate Polygon Area Algorithm using inches</small>
FLOOR 1 (Living area)	1535	$-((-24 + 458.2) * (118.4 - 118.4) + (458.2 + 458.2) * (118.4 - 255.6) + (458.2 + 695.5) * (255.6 - 255.6) + (695.5 + 695.5) * (255.6 - 538.7) + (695.5 + 561.6) * (538.7 - 538.7) + (561.6 + 561.6) * (538.7 - 455.5) + (561.6 + -24) * (455.5 - 455.5) + (-24 + -24) * (455.5 - 118.4)) * 0.5 * 0.00694$
PATIO (Non-living area)	180	$-((695.5 + 694.4) * (538.7 - 732.8) + (694.4 + 561.6) * (732.8 - 732.8) + (561.6 + 561.6) * (732.8 - 538.7) + (561.6 + 695.5) * (538.7 - 538.7)) * 0.5 * 0.00694$
PORCH (Non-living area)	139	$-((282.7 + 282.7) * (455.5 - 521) + (282.7 + -24) * (521 - 521) + (-24 + -24) * (521 - 455.5) + (-24 + 282.7) * (455.5 - 455.5)) * 0.5 * 0.00694$
FIREPLACE	13	$-((-24 + -24) * (330 - 397.5) + (-24 + -51.4) * (397.5 - 397.5) + (-51.4 + -51.4) * (397.5 - 330) +$

2073 Mauney Road, Bessemer City, Gaston County, North Carolina, United States, 28016

Gross Living Area: 1535 sq. ft

Space	Area (sq. ft)	Calculation <small>Coordinate Polygon Area Algorithm using inches</small>
(Non-living area)		$(-51.4 + -24) * (330 - 330) * 0.5 * 0.00694$