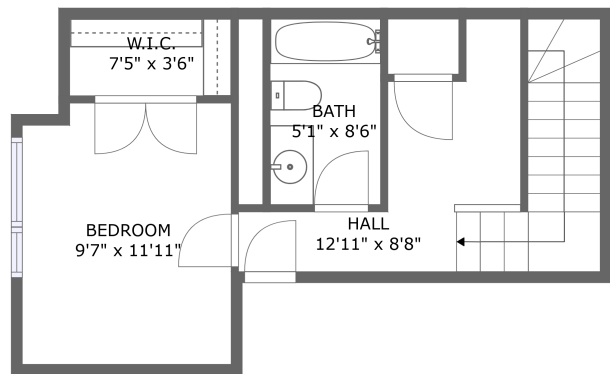
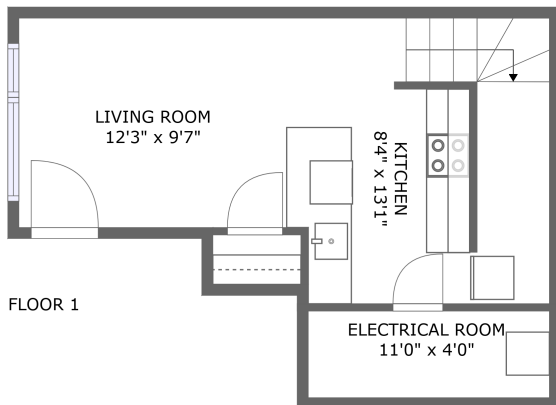


# 204 Terravita Private, Hunt Club, Windsor Park Village, Gloucester, Ontario, Canada, K1V 2R9



## Property summary


 **0** Garages

 **1** Bedrooms

 **1** Bathrooms

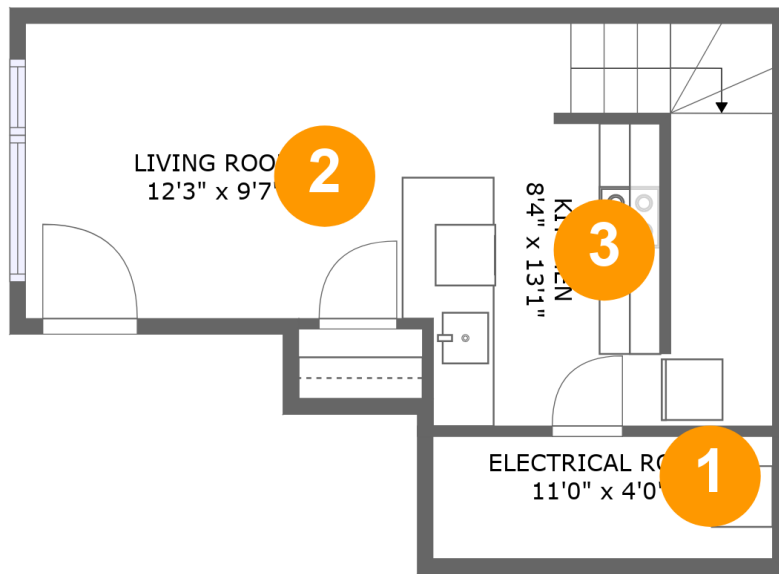
 **0** Half baths

 **2** Floors

 **684** Gross living area sqft

 **735** Total sqft

**204 Terravita Private, Hunt Club, Windsor Park Village, Gloucester, Ontario, Canada, K1V 2R9**



**Room dimensions**

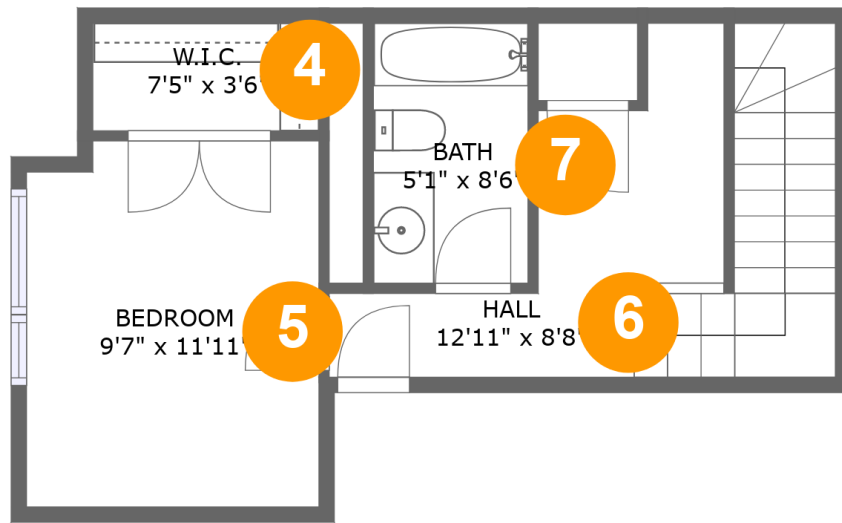
Floor 1

Total sqft: 363

Living area: 312

#		Dimensions	sqft	Counted as living area
1	Electrical Room	11'0" x 4'0"	44 sq. ft	No
2	Living Room	12'3" x 9'7"	117 sq. ft	Yes
3	Kitchen	8'4" x 13'1"	153 sq. ft	Yes

**204 Terravita Private, Hunt Club, Windsor Park Village, Gloucester, Ontario, Canada, K1V 2R9**



**Room dimensions**

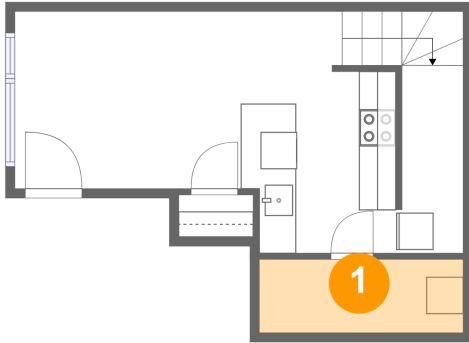
Floor 2

Total sqft: 372 Living area: 372

#		Dimensions	sqft	Counted as living area
4	W.I.C.	7'5" x 3'6"	26 sq. ft	Yes
5	Bedroom	9'7" x 11'11"	112 sq. ft	Yes
6	Hall	12'11" x 8'8"	118 sq. ft	Yes
7	Bath	5'1" x 8'6"	43 sq. ft	Yes

# 204 Terravita Private, Hunt Club, Windsor Park Village, Gloucester, Ontario, Canada, K1V 2R9

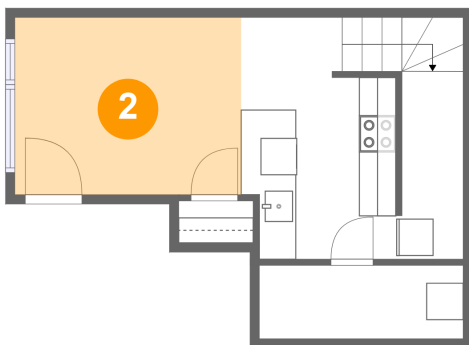
## 1 Floor 1 - Electrical Room



Dimensions: 11'0" x 4'0"  
Area: 44 sq. ft  
Counted as living area: No

Heated: No  
Finished: No  
Enclosed: Yes  
Contiguous: Yes  
Permitted: Yes  
Wet space: No  
Addition: No  
Conversion: No

## 2 Floor 1 - Living Room

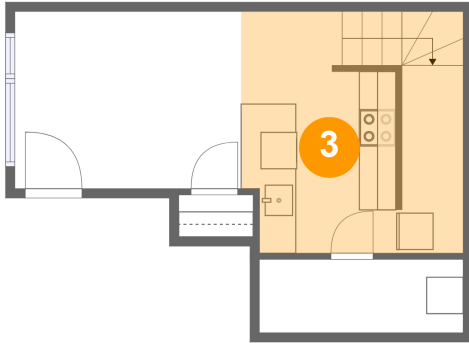


Dimensions: 12'3" x 9'7"  
Area: 117 sq. ft  
Counted as living area: Yes

Heated: Yes  
Finished: Yes  
Enclosed: Yes  
Contiguous: Yes  
Permitted: Yes  
Wet space: No  
Addition: No  
Conversion: No

# 204 Terravita Private, Hunt Club, Windsor Park Village, Gloucester, Ontario, Canada, K1V 2R9

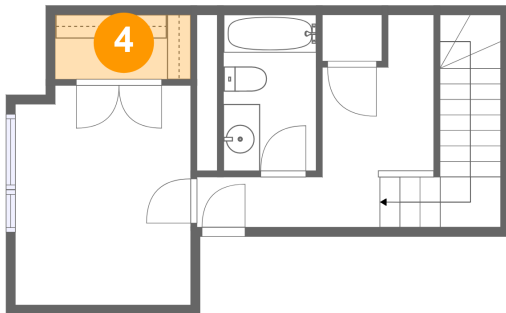
## 3 Floor 1 - Kitchen



Dimensions: 8'4" x 13'1"  
Area: 153 sq. ft  
Counted as living area: Yes

Heated: Yes  
Finished: Yes  
Enclosed: Yes  
Contiguous: Yes  
Permitted: Yes  
Wet space: No  
Addition: No  
Conversion: No

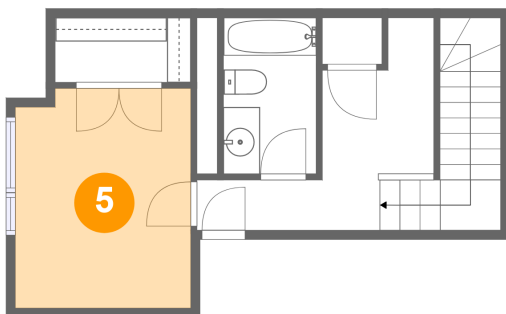
## 4 Floor 2 - W.I.C.



Dimensions: 7'5" x 3'6"  
Area: 26 sq. ft  
Counted as living area: Yes

Heated: Yes  
Finished: Yes  
Enclosed: Yes  
Contiguous: Yes  
Permitted: Yes  
Wet space: No  
Addition: No  
Conversion: No

## 5 Floor 2 - Bedroom

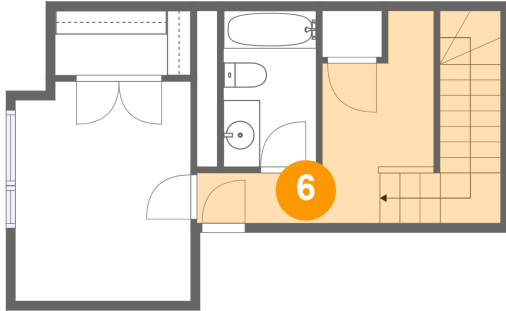


Dimensions: 9'7" x 11'11"  
Area: 112 sq. ft  
Counted as living area: Yes

Heated: Yes  
Finished: Yes  
Enclosed: Yes  
Contiguous: Yes  
Permitted: Yes  
Wet space: No  
Addition: No  
Conversion: No

# 204 Terravita Private, Hunt Club, Windsor Park Village, Gloucester, Ontario, Canada, K1V 2R9

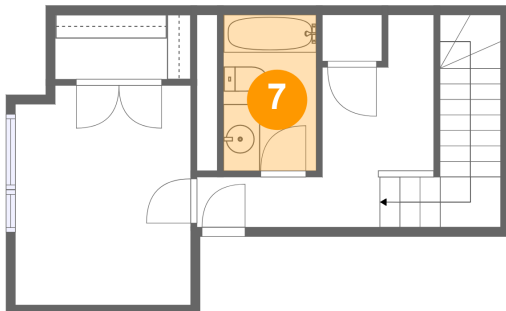
## 6 Floor 2 - Hall



Dimensions: 12'11" x 8'8"  
Area: 118 sq. ft  
Counted as living area: Yes

Heated: Yes  
Finished: Yes  
Enclosed: Yes  
Contiguous: Yes  
Permitted: Yes  
Wet space: No  
Addition: No  
Conversion: No

## 7 Floor 2 - Bath



Dimensions: 5'1" x 8'6"  
Area: 43 sq. ft  
Counted as living area: Yes

Heated: Yes  
Finished: Yes  
Enclosed: Yes  
Contiguous: Yes  
Permitted: Yes  
Wet space: Yes  
Addition: No  
Conversion: No