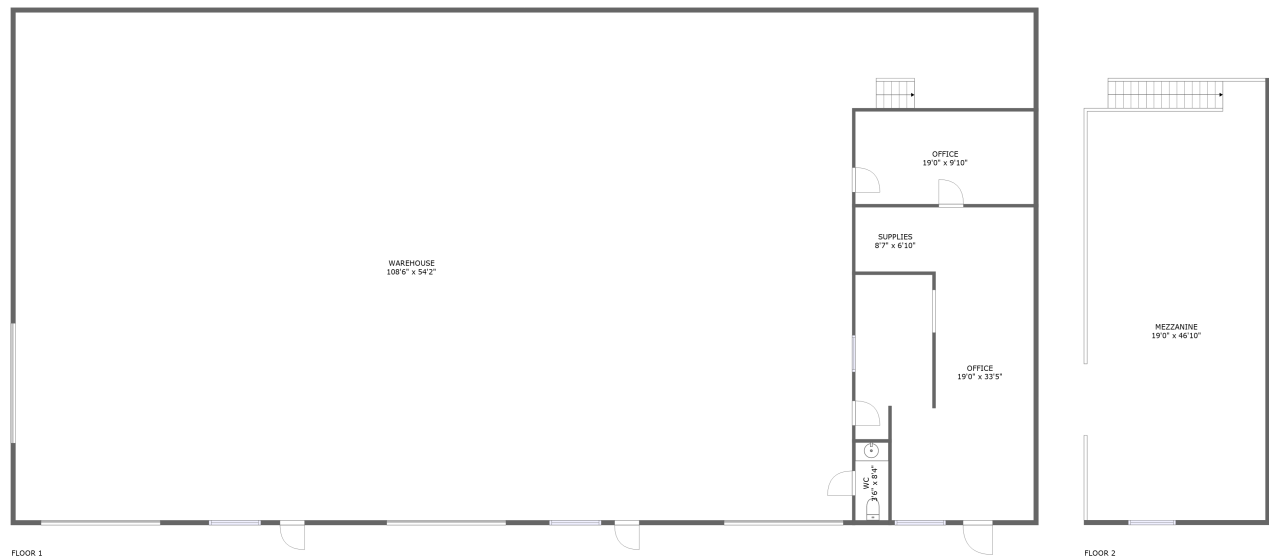




Home report


1010 Shearme Road, Coombs, Regional District of Nanaimo,
British Columbia, Canada, V0R 1M0, #11





Property summary


 **0** Garages


 **0** Bedrooms

 **0** Bathrooms

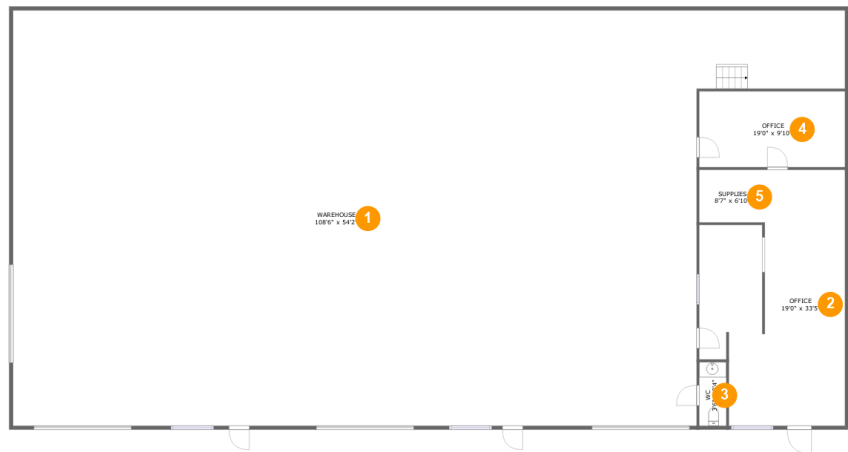
 **1** Half baths

 **2** Floors

 **274** Gross living area sqft

 **6,955** Total sqft

1010 Shearme Road, Coombs, Regional District of Nanaimo,
British Columbia, Canada, V0R 1M0, #11



Room dimensions

Floor 1 Total sqft: 6043 Living area: 274

#		Max Dimensions	sqft	Included
1	Warehouse	108'6" x 54'2"	5029 sq. ft	No
2	Office	19'0" x 33'5"	538 sq. ft	No
3	WC	3'6" x 8'4"	29 sq. ft	No
4	Office	19'0" x 9'10"	188 sq. ft	Yes
5	Supplies	8'7" x 6'10"	59 sq. ft	Yes

1010 Shearme Road, Coombs, Regional District of Nanaimo,
British Columbia, Canada, V0R 1M0, #11



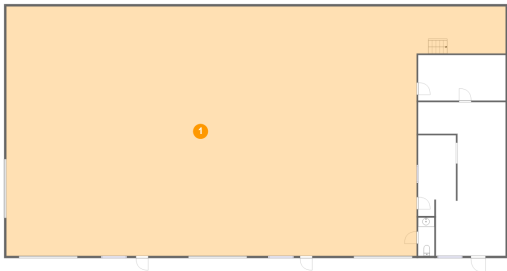
Room dimensions

Floor 2 Total sqft: 912 Living area: 0

#		Max Dimensions	sqft	Included
6	Mezzanine	19'0" x 46'10"	879 sq. ft	No

1010 Shearme Road, Coombs, Regional District of Nanaimo,
British Columbia, Canada, V0R 1M0, #11

1 Floor 1 - Warehouse



Max Dimensions: 108'6" x 54'2"
Calculated Area: 5029 sq. ft
Included: No

Heated: No
Finished: No
Enclosed: Yes
Contiguous: Yes
Permitted: Yes
Wet space: No
Addition: No
Conversion: No

2 Floor 1 - Office



Max Dimensions: 19'0" x 33'5"
Calculated Area: 538 sq. ft
Included: No

Heated: Yes
Finished: Yes
Enclosed: Yes
Contiguous: No
Permitted: Yes
Wet space: No
Addition: No
Conversion: No

1010 Shearme Road, Coombs, Regional District of Nanaimo,
British Columbia, Canada, V0R 1M0, #11

3 Floor 1 - WC



Max Dimensions: 3'6" x 8'4"
Calculated Area: 29 sq. ft
Included: No

Heated: Yes
Finished: Yes
Enclosed: Yes
Contiguous: No
Permitted: Yes
Wet space: Yes
Addition: No
Conversion: No

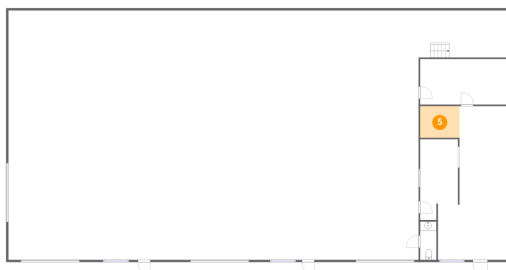
4 Floor 1 - Office



Max Dimensions: 19'0" x 9'10"
Calculated Area: 188 sq. ft
Included: Yes

Heated: Yes
Finished: Yes
Enclosed: Yes
Contiguous: Yes
Permitted: Yes
Wet space: No
Addition: No
Conversion: No

5 Floor 1 - Supplies

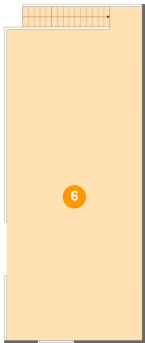


Max Dimensions: 8'7" x 6'10"
Calculated Area: 59 sq. ft
Included: Yes

Heated: Yes
Finished: Yes
Enclosed: Yes
Contiguous: Yes
Permitted: Yes
Wet space: No
Addition: No
Conversion: No

1010 Shearme Road, Coombs, Regional District of Nanaimo,
British Columbia, Canada, V0R 1M0, #11

6 Floor 2 - Mezzanine



Max Dimensions: 19'0" x
46'10"
Calculated Area: 879 sq. ft
Included: No

Heated: No
Finished: No
Enclosed: No
Contiguous:
Yes
Permitted: Yes
Wet space: No
Addition: No
Conversion: No