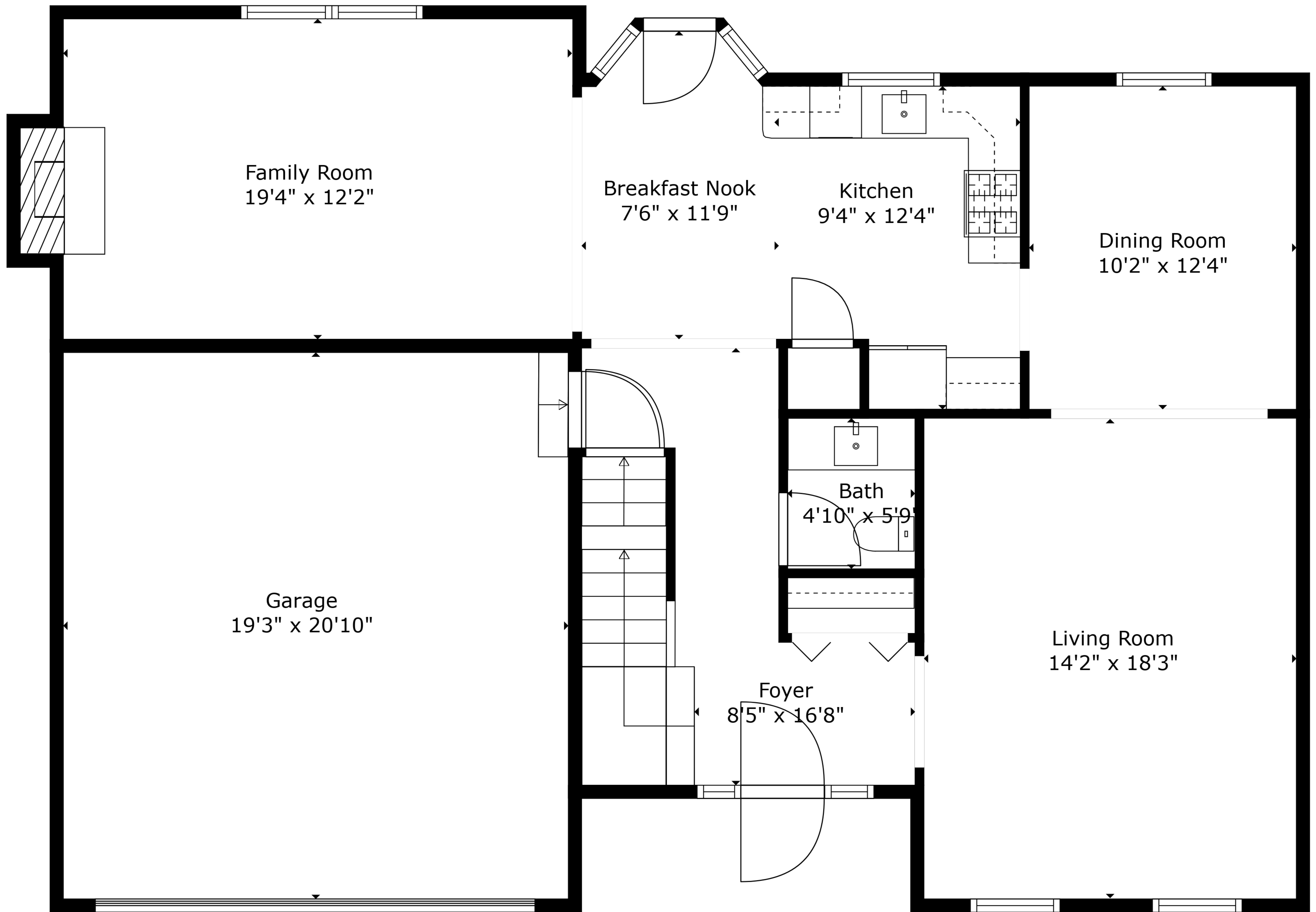


Basement
46'11" x 30'11"

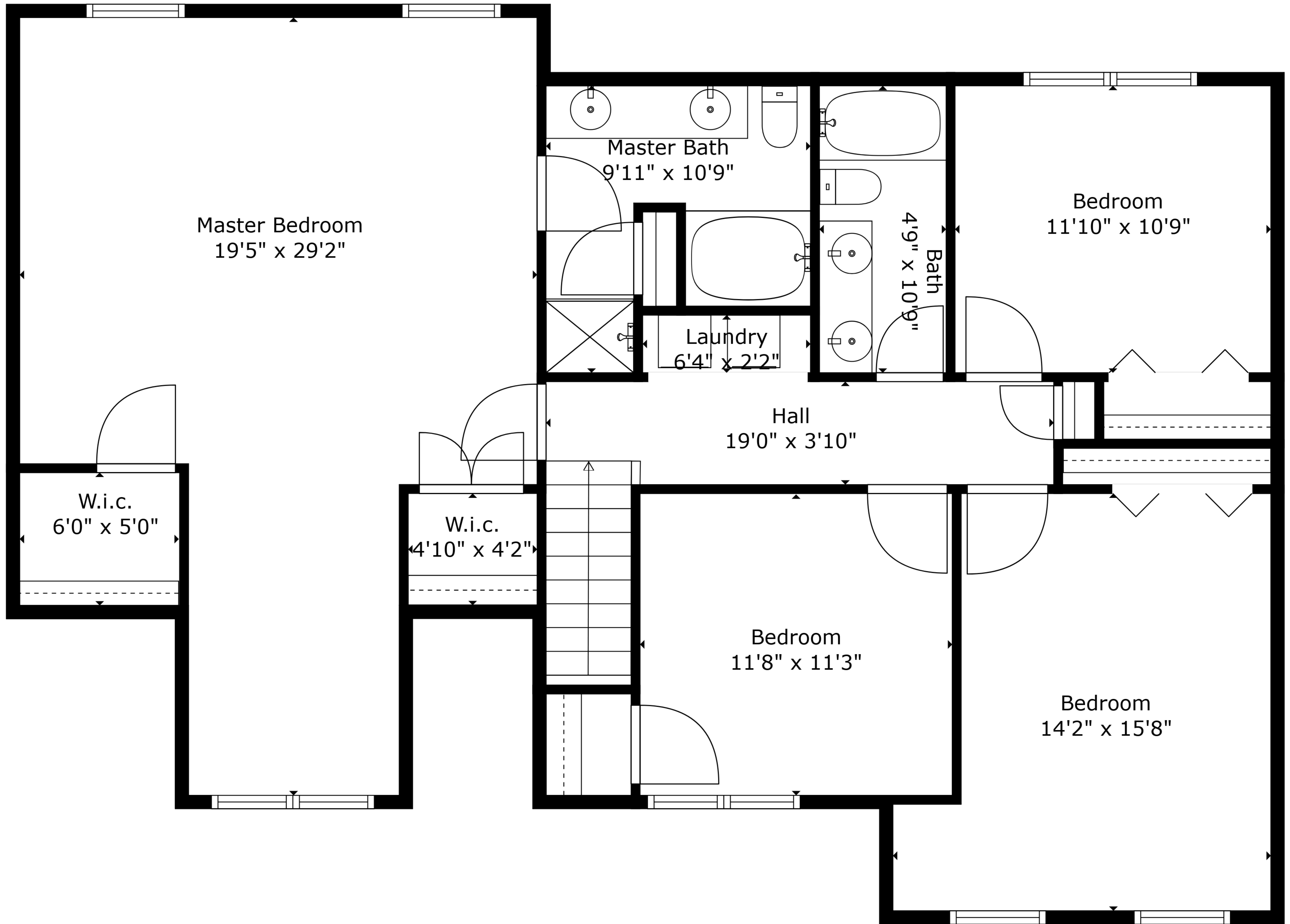
TOTAL: 3337 sq. ft

BELOW GROUND: 1023 sq. ft, FLOOR 2: 1038 sq. ft, FLOOR 3: 1276 sq. ft
EXCLUDED AREAS: GARAGE: 400 sq. ft, FIREPLACE: 10 sq. ft



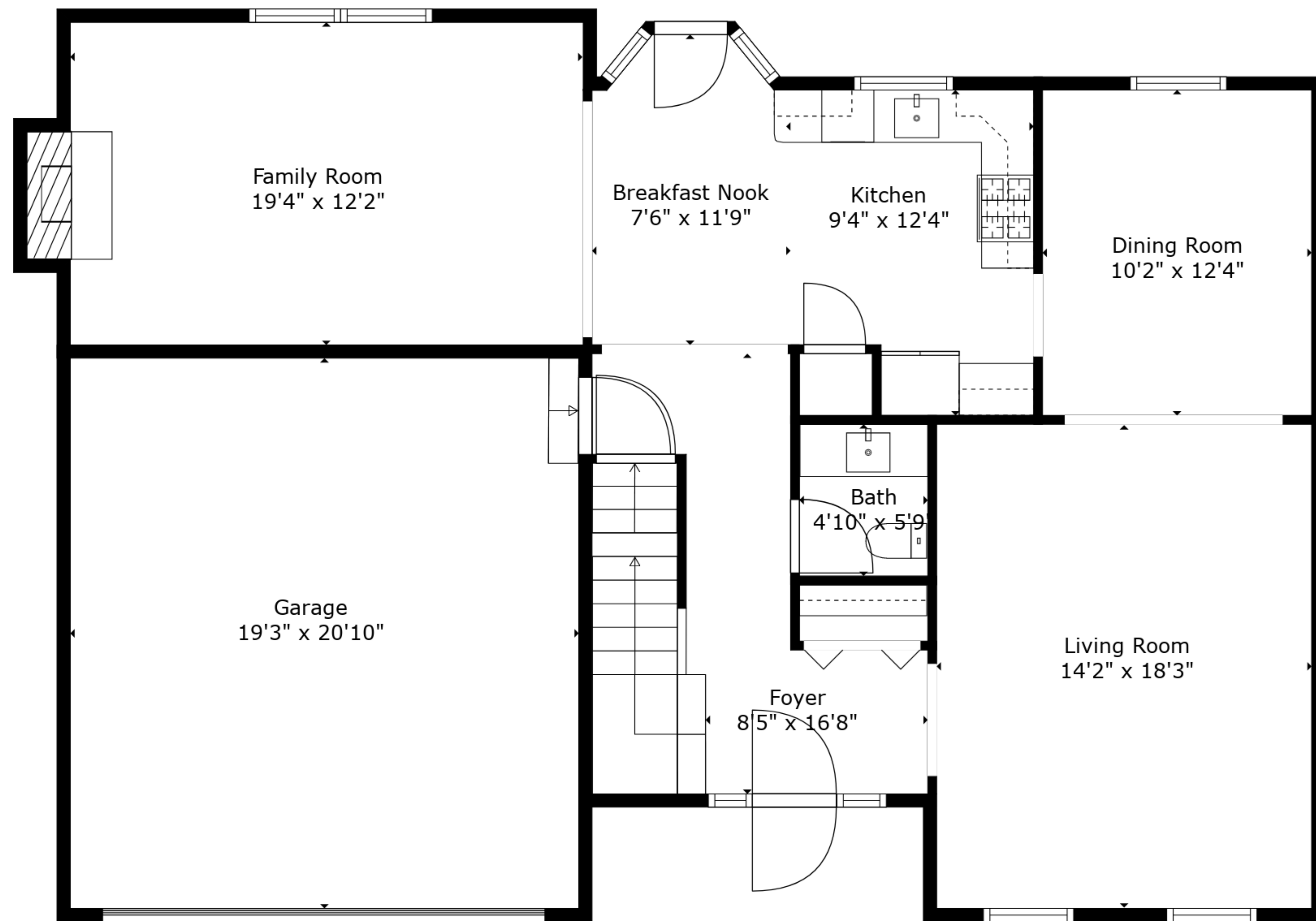
TOTAL: 3337 sq. ft

BELOW GROUND: 1023 sq. ft, FLOOR 2: 1038 sq. ft, FLOOR 3: 1276 sq. ft
 EXCLUDED AREAS: GARAGE: 400 sq. ft, FIREPLACE: 10 sq. ft

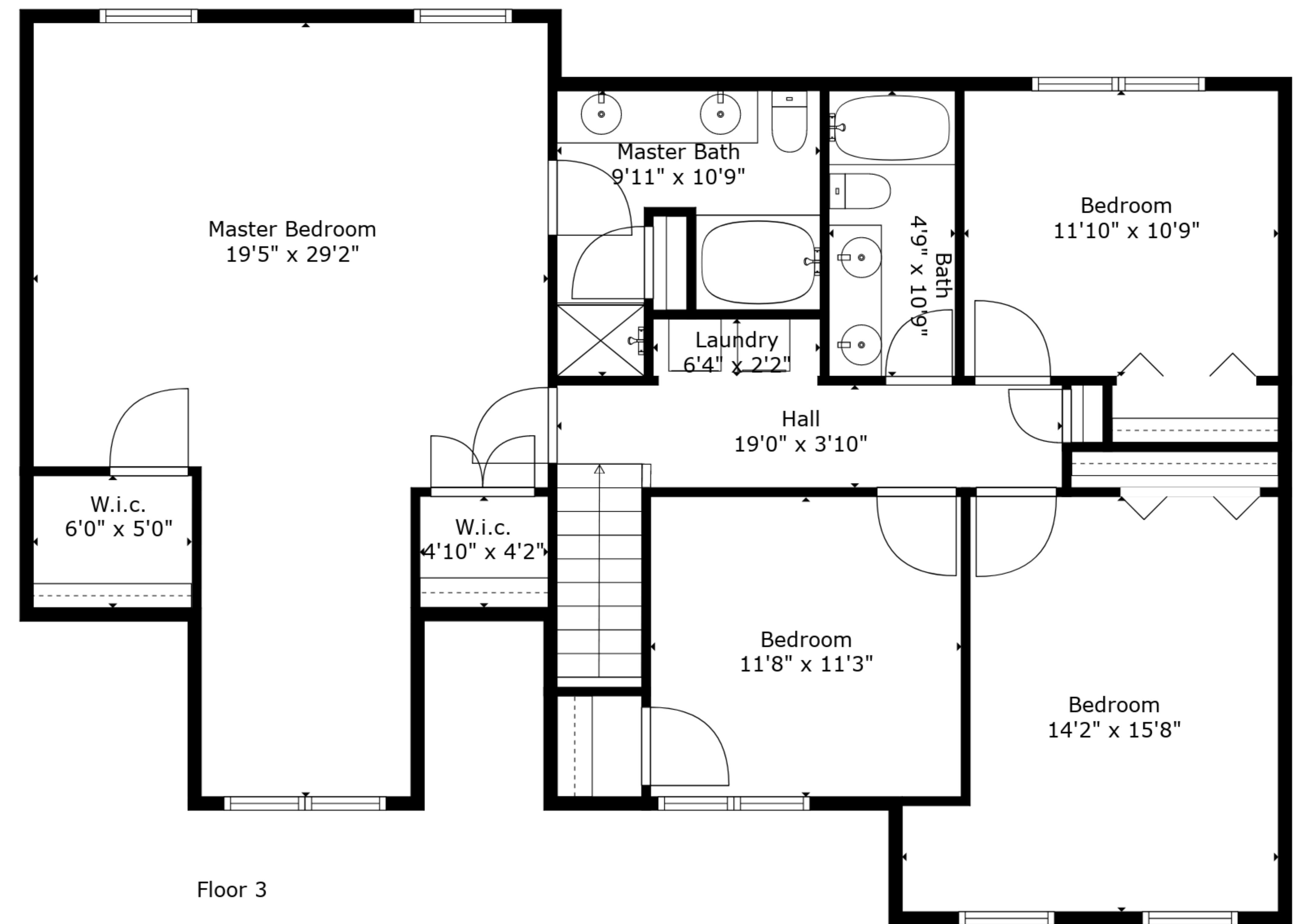


TOTAL: 3337 sq. ft

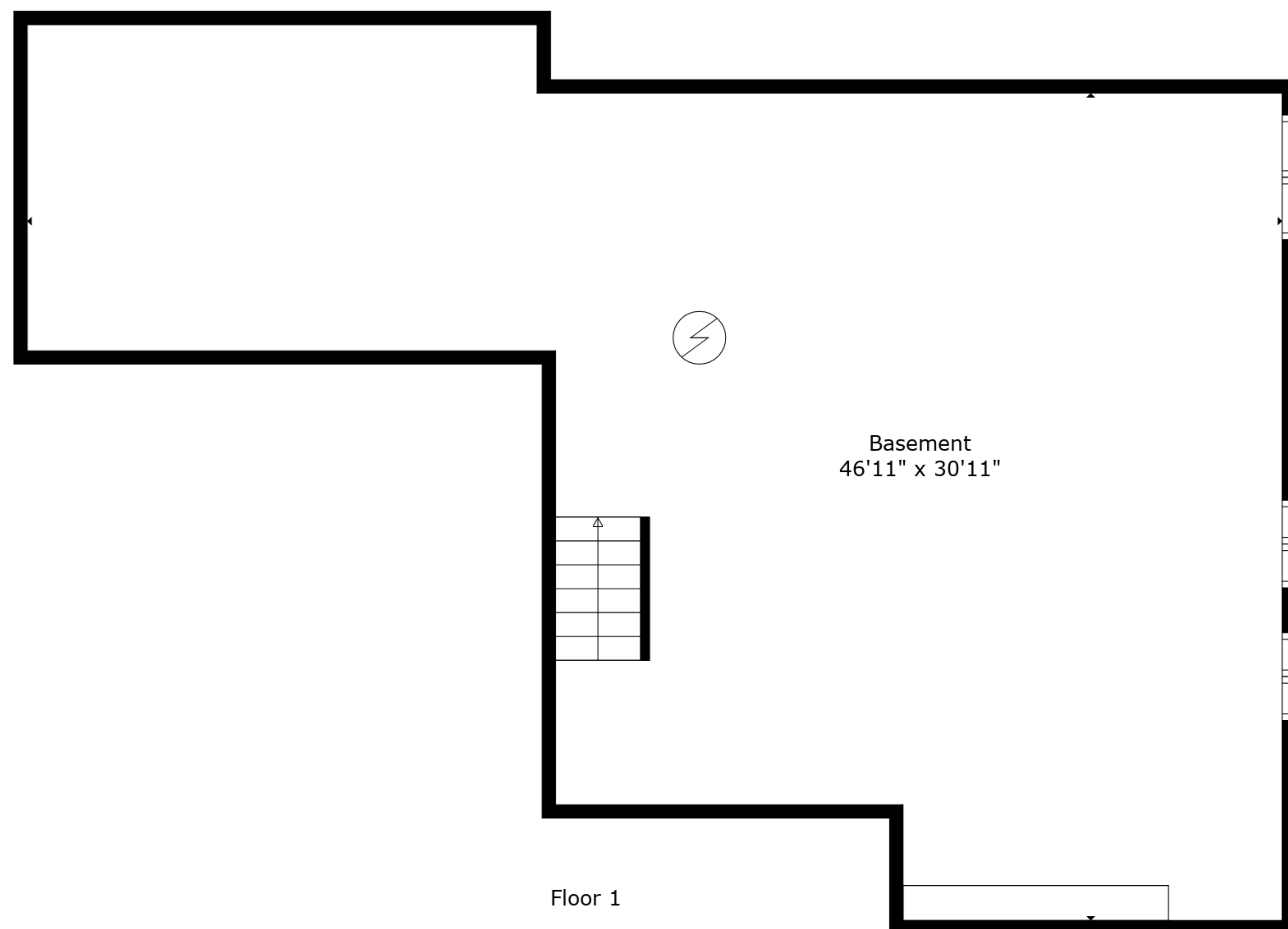
BELOW GROUND: 1023 sq. ft, FLOOR 2: 1038 sq. ft, FLOOR 3: 1276 sq. ft
 EXCLUDED AREAS: GARAGE: 400 sq. ft, FIREPLACE: 10 sq. ft



Floor 2



Floor 3



Floor 1

TOTAL: 3337 sq. ft

BELOW GROUND: 1023 sq. ft, FLOOR 2: 1038 sq. ft, FLOOR 3: 1276 sq. ft
 EXCLUDED AREAS: GARAGE: 400 sq. ft, FIREPLACE: 10 sq. ft

