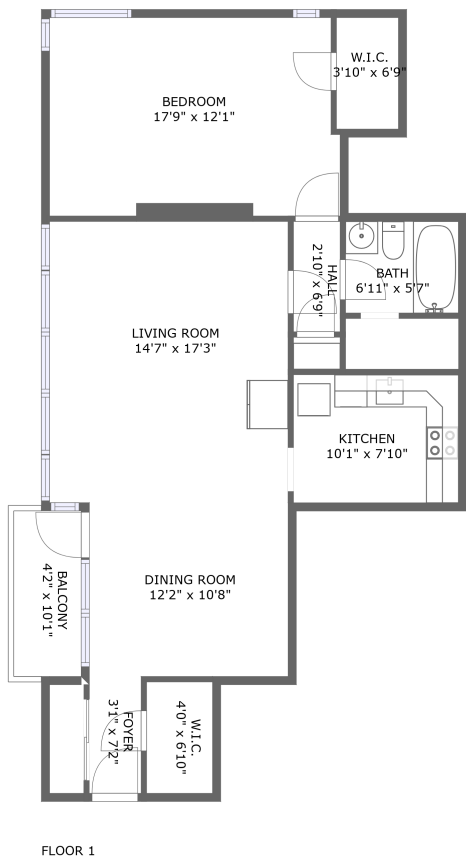




Home report


552 N Neville St,Pittsburgh,PA,US




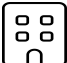
Property summary


**0** Garages


**1** Bedrooms

**1** Bathrooms

**0** Half baths

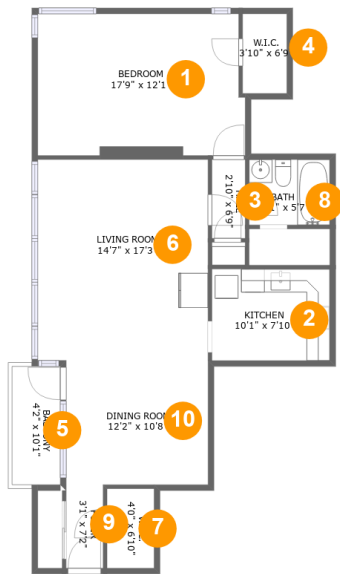
**1** Floors

**877** Gross living area sqft

**919** Total sqft

Home report

552 N Neville St,Pittsburgh,PA,US

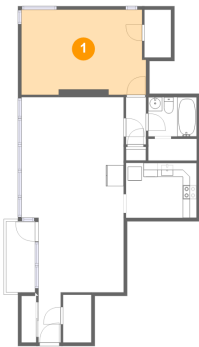


Room dimensions

Floor 1 Total sqft: 919    Living area: 877

#		Dimensions	sqft	Counted as living area
1	Bedroom	17'9" x 12'1"	206 sq. ft	Yes
2	Kitchen	10'1" x 7'10"	79 sq. ft	Yes
3	Hall	2'10" x 6'9"	19 sq. ft	Yes
4	W.I.C.	3'10" x 6'9"	26 sq. ft	Yes
5	Balcony	4'2" x 10'1"	42 sq. ft	No
6	Living Room	14'7" x 17'3"	251 sq. ft	Yes
7	W.I.C.	4'0" x 6'10"	28 sq. ft	Yes
8	Bath	6'11" x 5'7"	39 sq. ft	Yes
9	Foyer	3'1" x 7'2"	23 sq. ft	Yes
10	Dining Room	12'2" x 10'8"	129 sq. ft	Yes

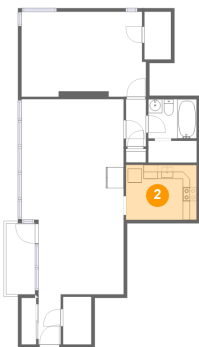
1 Floor 1 - Bedroom



Dimensions: 17'9" x 12'1"  
Area: 206 sq. ft  
Counted as living area: Yes

Heated: Yes  
Finished: Yes  
Enclosed: Yes  
Contiguous: Yes  
Permitted: Yes  
Wet space: No  
Addition: No  
Conversion: No

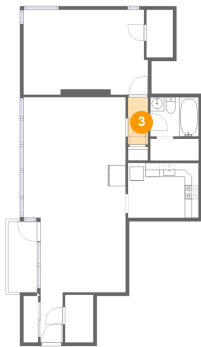
2 Floor 1 - Kitchen



Dimensions: 10'1" x 7'10"  
Area: 79 sq. ft  
Counted as living area: Yes

Heated: Yes  
Finished: Yes  
Enclosed: Yes  
Contiguous: Yes  
Permitted: Yes  
Wet space: No  
Addition: No  
Conversion: No

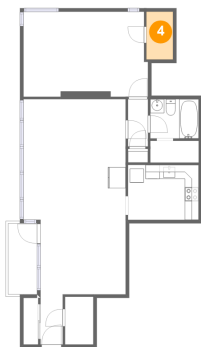
3 Floor 1 - Hall



Dimensions: 2'10" x 6'9"  
Area: 19 sq. ft  
Counted as living area: Yes

Heated: Yes  
Finished: Yes  
Enclosed: Yes  
Contiguous: Yes  
Permitted: Yes  
Wet space: No  
Addition: No  
Conversion: No

4 Floor 1 - W.I.C.



Dimensions: 3'10" x 6'9"  
Area: 26 sq. ft  
Counted as living area: Yes

Heated: Yes  
Finished: Yes  
Enclosed: Yes  
Contiguous: Yes  
Permitted: Yes  
Wet space: No  
Addition: No  
Conversion: No

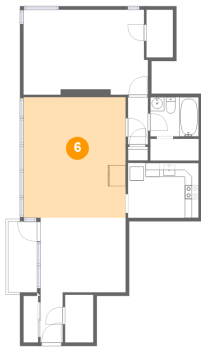
5 Floor 1 - Balcony



Dimensions: 4'2" x 10'1"  
Area: 42 sq. ft  
Counted as living area: No

Heated: No  
Finished: Yes  
Enclosed: No  
Contiguous: Yes  
Permitted: Yes  
Wet space: No  
Addition: No  
Conversion: No

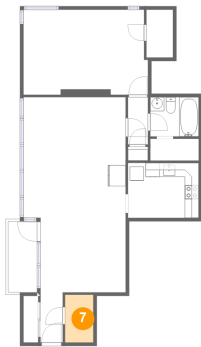
6 Floor 1 - Living Room



Dimensions: 14'7" x 17'3"  
Area: 251 sq. ft  
Counted as living area: Yes

Heated: Yes  
Finished: Yes  
Enclosed: Yes  
Contiguous: Yes  
Permitted: Yes  
Wet space: No  
Addition: No  
Conversion: No

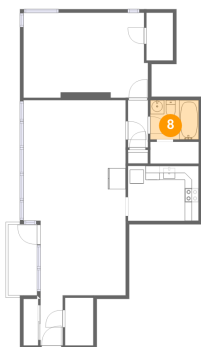
7 Floor 1 - W.I.C.



Dimensions: 4'0" x 6'10"  
Area: 28 sq. ft  
Counted as living area: Yes

Heated: Yes  
Finished: Yes  
Enclosed: Yes  
Contiguous: Yes  
Permitted: Yes  
Wet space: No  
Addition: No  
Conversion: No

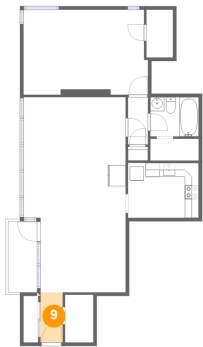
8 Floor 1 - Bath



Dimensions: 6'11" x 5'7"  
Area: 39 sq. ft  
Counted as living area: Yes

Heated: Yes  
Finished: Yes  
Enclosed: Yes  
Contiguous: Yes  
Permitted: Yes  
Wet space: Yes  
Addition: No  
Conversion: No

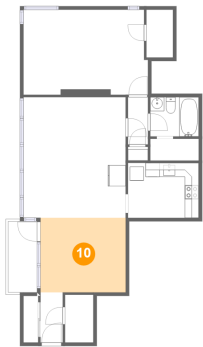
9 Floor 1 - Foyer



Dimensions: 3'1" x 7'2"  
Area: 23 sq. ft  
Counted as living area: Yes

Heated: Yes  
Finished: Yes  
Enclosed: Yes  
Contiguous: Yes  
Permitted: Yes  
Wet space: No  
Addition: No  
Conversion: No

10 Floor 1 - Dining Room



Dimensions: 12'2" x 10'8"  
Area: 129 sq. ft  
Counted as living area: Yes

Heated: Yes  
Finished: Yes  
Enclosed: Yes  
Contiguous: Yes  
Permitted: Yes  
Wet space: No  
Addition: No  
Conversion: No