

2229 South Jefferson Street, South Roanoke, Roanoke, Roanoke, Virginia, United States,



Property Summary

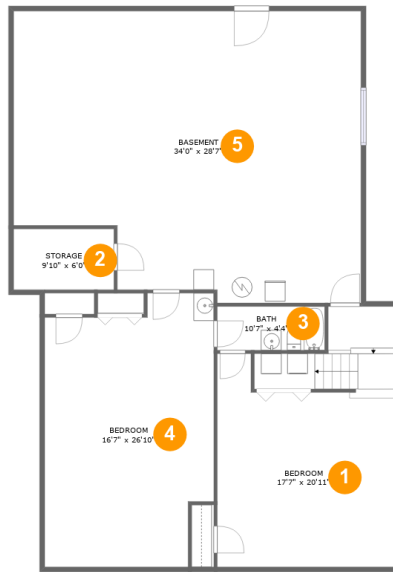
0 garages **5** bedrooms **3** bathrooms **0** half baths

2 floors

2,172 Gross Living Area sqft

4,478 total sqft

2229 South Jefferson Street, South Roanoke, Roanoke, Roanoke, Virginia, United States,



Room Dimensions

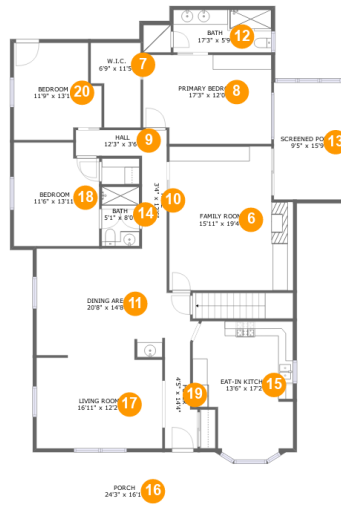
Floor 1

Total sqft: 1950

Living area: 105

#	Room name	Dimensions	Area (sqft)	Counted as Living Area
1	Bedroom	17'7" x 20'11"	394 sq. ft	No
2	Storage	9'10" x 6'0"	59 sq. ft	No
3	Bath	10'7" x 4'4"	45 sq. ft	Yes
4	Bedroom	16'7" x 26'10"	406 sq. ft	No
5	Basement	34'0" x 28'7"	886 sq. ft	No

2229 South Jefferson Street, South Roanoke, Roanoke, Roanoke, Virginia, United States,



Room Dimensions

Floor 2

Total sqft: 2528

Living area: 2067

#	Room name	Dimensions	Area (sqft)	Counted as Living Area
6	Family Room	15'11" x 19'4"	301 sq. ft	Yes
7	W.i.c.	6'9" x 11'5"	66 sq. ft	Yes
8	Primary Bedroom	17'3" x 12'0"	199 sq. ft	Yes
9	Hall	12'3" x 3'6"	42 sq. ft	Yes
10	Hall	3'4" x 12'6"	42 sq. ft	Yes
11	Dining Area	20'8" x 14'8"	275 sq. ft	Yes
12	Bath	17'3" x 5'9"	90 sq. ft	Yes
13	Screened Porch	9'5" x 15'9"	149 sq. ft	No
14	Bath	5'1" x 8'0"	41 sq. ft	Yes
15	Eat-in Kitchen	13'6" x 17'2"	210 sq. ft	Yes
16	Porch	24'3" x 16'1"	285 sq. ft	No

Scan captured on Tue, 23 Jul 2024 19:35:42 GMT

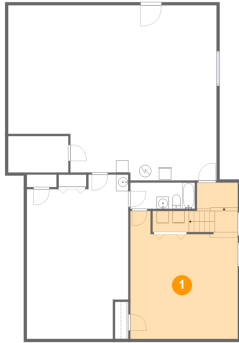
Information is calculated by CubiCasa technology; deemed highly reliable but not guaranteed.

**2229 South Jefferson Street, South Roanoke,
Roanoke, Roanoke, Virginia, United States,**

#	Room name	Dimensions	Area (sqft)	Counted as Living Area
17	Living Room	16'11" x 12'2"	206 sq. ft	Yes
18	Bedroom	11'6" x 13'11"	153 sq. ft	Yes
19	Foyer	4'5" x 14'4"	54 sq. ft	Yes
20	Bedroom	11'9" x 13'1"	137 sq. ft	Yes

2229 South Jefferson Street, South Roanoke, Roanoke, Roanoke, Virginia, United States,

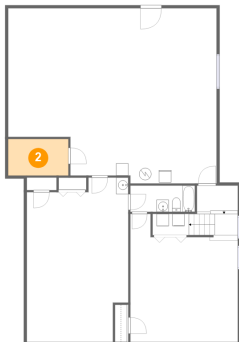
1 Floor 1 - Bedroom



Dimensions: 17'7" x 20'11"
Area: 394 sq. ft
Counted as Living Area: No

Heated: Yes
Finished: Yes
Enclosed: Yes
Contiguous: Yes
Permitted: Yes
Wet Space: No
Addition: No
Conversion: No

2 Floor 1 - Storage

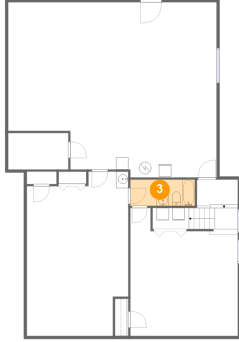


Dimensions: 9'10" x 6'0"
Area: 59 sq. ft
Counted as Living Area: No

Heated: No
Finished: No
Enclosed: No
Contiguous: Yes
Permitted: Yes
Wet Space: No
Addition: No
Conversion: No

2229 South Jefferson Street, South Roanoke, Roanoke, Roanoke, Virginia, United States,

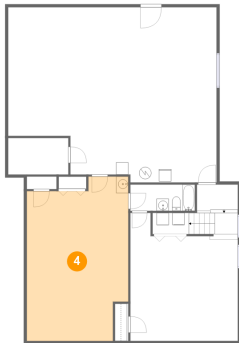
3 Floor 1 - Bath



Dimensions: 10'7" x 4'4"
Area: 45 sq. ft
Counted as Living Area:
Yes

Heated: Yes
Finished: Yes
Enclosed: Yes
Contiguous:
Yes
Permitted: Yes
Wet Space: Yes
Addition: No
Conversion: No

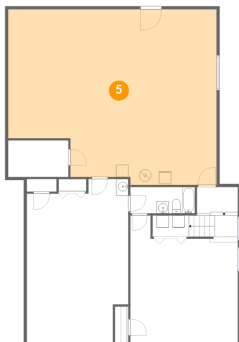
4 Floor 1 - Bedroom



Dimensions: 16'7" x 26'10"
Area: 406 sq. ft
Counted as Living Area: No

Heated: Yes
Finished: Yes
Enclosed: Yes
Contiguous: Yes
Permitted: Yes
Wet Space: No
Addition: No
Conversion: No

5 Floor 1 - Basement

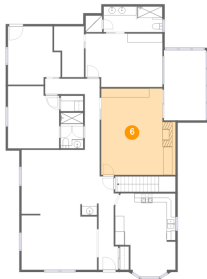


Dimensions: 34'0" x 28'7"
Area: 886 sq. ft
Counted as Living Area: No

Heated: No
Finished: No
Enclosed: Yes
Contiguous: Yes
Permitted: Yes
Wet Space: No
Addition: No
Conversion: No

2229 South Jefferson Street, South Roanoke, Roanoke, Roanoke, Virginia, United States,

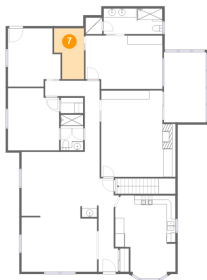
6 Floor 2 - Family Room



Dimensions: 15'11" x 19'4"
Area: 301 sq. ft
Counted as Living Area:
Yes

Heated: Yes
Finished: Yes
Enclosed: Yes
Contiguous:
Yes
Permitted: Yes
Wet Space: No
Addition: No
Conversion: No

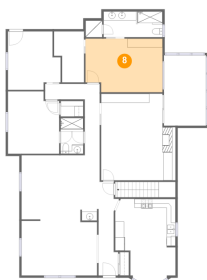
7 Floor 2 - W.i.c.



Dimensions: 6'9" x 11'5"
Area: 66 sq. ft
Counted as Living Area:
Yes

Heated: Yes
Finished: Yes
Enclosed: Yes
Contiguous:
Yes
Permitted: Yes
Wet Space: No
Addition: No
Conversion: No

8 Floor 2 - Primary Bedroom

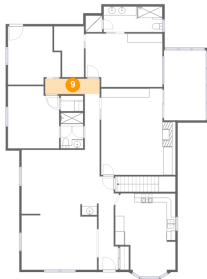


Dimensions: 17'3" x 12'0"
Area: 199 sq. ft
Counted as Living Area:
Yes

Heated: Yes
Finished: Yes
Enclosed: Yes
Contiguous:
Yes
Permitted: Yes
Wet Space: No
Addition: No
Conversion: No

2229 South Jefferson Street, South Roanoke, Roanoke, Roanoke, Virginia, United States,

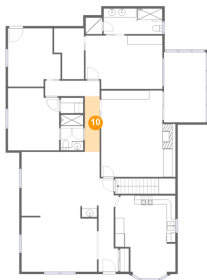
9 Floor 2 - Hall



Dimensions: 12'3" x 3'6"
Area: 42 sq. ft
Counted as Living Area:
Yes

Heated: Yes
Finished: Yes
Enclosed: Yes
Contiguous:
Yes
Permitted: Yes
Wet Space: No
Addition: No
Conversion: No

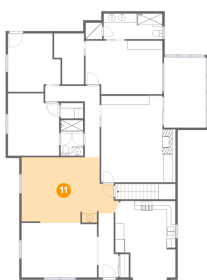
10 Floor 2 - Hall



Dimensions: 3'4" x 12'6"
Area: 42 sq. ft
Counted as Living Area:
Yes

Heated: Yes
Finished: Yes
Enclosed: Yes
Contiguous:
Yes
Permitted: Yes
Wet Space: No
Addition: No
Conversion: No

11 Floor 2 - Dining Area



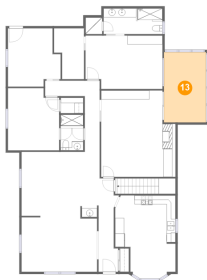
Dimensions: 20'8" x 14'8"
Area: 275 sq. ft
Counted as Living Area:
Yes

Heated: Yes
Finished: Yes
Enclosed: Yes
Contiguous:
Yes
Permitted: Yes
Wet Space: No
Addition: No
Conversion: No

**2229 South Jefferson Street, South Roanoke,
Roanoke, Roanoke, Virginia, United States,****12 Floor 2 - Bath**

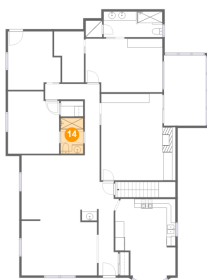
Dimensions: 17'3" x 5'9"
Area: 90 sq. ft
Counted as Living Area:
Yes

Heated: Yes
Finished: Yes
Enclosed: Yes
Contiguous:
Yes
Permitted: Yes
Wet Space: Yes
Addition: No
Conversion: No

13 Floor 2 - Screened Porch

Dimensions: 9'5" x 15'9"
Area: 149 sq. ft
Counted as Living Area: No

Heated: No
Finished: No
Enclosed: No
Contiguous: Yes
Permitted: Yes
Wet Space: No
Addition: No
Conversion: No

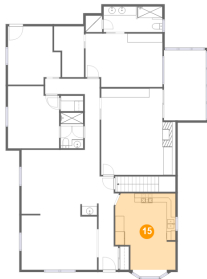
14 Floor 2 - Bath

Dimensions: 5'1" x 8'0"
Area: 41 sq. ft
Counted as Living Area:
Yes

Heated: Yes
Finished: Yes
Enclosed: Yes
Contiguous:
Yes
Permitted: Yes
Wet Space: Yes
Addition: No
Conversion: No

2229 South Jefferson Street, South Roanoke, Roanoke, Roanoke, Virginia, United States,

15 Floor 2 - Eat-in Kitchen



Dimensions: 13'6" x 17'2"
Area: 210 sq. ft
Counted as Living Area:
Yes

Heated: Yes
Finished: Yes
Enclosed: Yes
Contiguous:
Yes
Permitted: Yes
Wet Space: No
Addition: No
Conversion: No

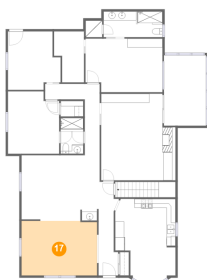
16 Floor 2 - Porch



Dimensions: 24'3" x 16'1"
Area: 285 sq. ft
Counted as Living Area: No

Heated: No
Finished: No
Enclosed: No
Contiguous: Yes
Permitted: Yes
Wet Space: No
Addition: No
Conversion: No

17 Floor 2 - Living Room

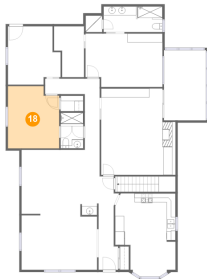


Dimensions: 16'11" x 12'2"
Area: 206 sq. ft
Counted as Living Area:
Yes

Heated: Yes
Finished: Yes
Enclosed: Yes
Contiguous:
Yes
Permitted: Yes
Wet Space: No
Addition: No
Conversion: No

2229 South Jefferson Street, South Roanoke, Roanoke, Roanoke, Virginia, United States,

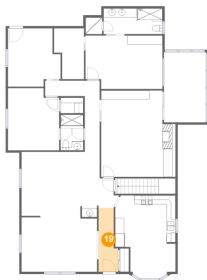
18 Floor 2 - Bedroom



Dimensions: 11'6" x 13'11"
Area: 153 sq. ft
Counted as Living Area:
Yes

Heated: Yes
Finished: Yes
Enclosed: Yes
Contiguous:
Yes
Permitted: Yes
Wet Space: No
Addition: No
Conversion: No

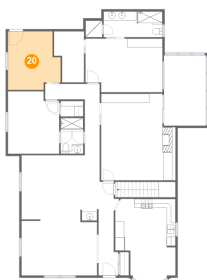
19 Floor 2 - Foyer



Dimensions: 4'5" x 14'4"
Area: 54 sq. ft
Counted as Living Area:
Yes

Heated: Yes
Finished: Yes
Enclosed: Yes
Contiguous:
Yes
Permitted: Yes
Wet Space: No
Addition: No
Conversion: No

20 Floor 2 - Bedroom



Dimensions: 11'9" x 13'1"
Area: 137 sq. ft
Counted as Living Area:
Yes

Heated: Yes
Finished: Yes
Enclosed: Yes
Contiguous:
Yes
Permitted: Yes
Wet Space: No
Addition: No
Conversion: No