

Home data report

68426 Co Rd 23,New Paris,IN,US



Total Area: 2093 sq. ft

Below Ground: 951 sq. ft, 1st Floor: 1142 sq. ft

Excluded: Storage 94 sq. ft, Utility 97 sq. ft, Garage 454 sq. ft, Covered deck 248 sq. ft, Walls: 192 sq. ft

Property summary

 **2** Floors

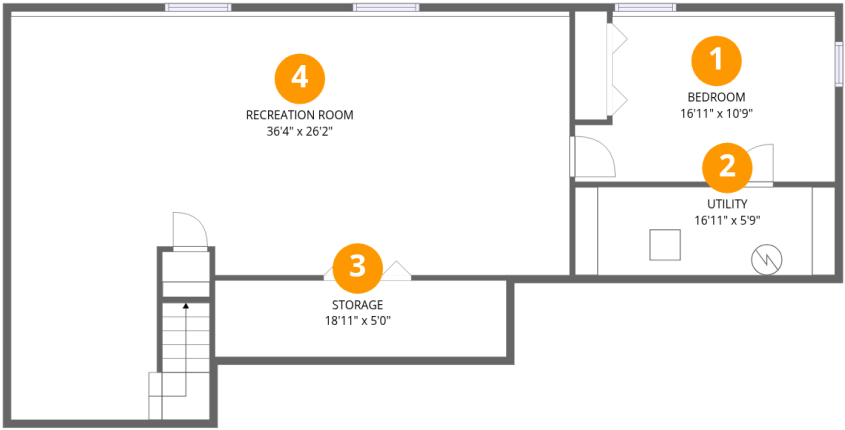
 **4** Bedrooms

 **2** Bathrooms

 **1** Garages

Home data report

68426 Co Rd 23,New Paris,IN,US



Room dimensions

Floor 1 Below grade Total:951sqft Excluded: 191sqft

#		Dimensions	sqft	Counted as living area
1	Bedroom	16'11" x 10'9"	169 sq. ft	Yes
2	Utility	16'11" x 5'9"	97 sq. ft	No
3	Storage	18'11" x 5'0"	94 sq. ft	No
4	Recreation Room	36'4" x 26'2"	730 sq. ft	Yes

68426 Co Rd 23,New Paris,IN,US



Total:1142sqft Excluded: 702sqft

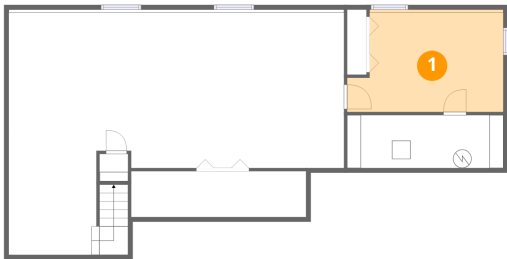
Scan captured on Thu, 11 Dec 2025 23:08:44 GMT

Home data report

68426 Co Rd 23,New Paris,IN,US

#		Dimensions	sqft	Counted as living area
16	Primary Bedroom	13'8" x 11'0"	150 sq. ft	Yes
17	Bath	6'8" x 11'7"	58 sq. ft	Yes

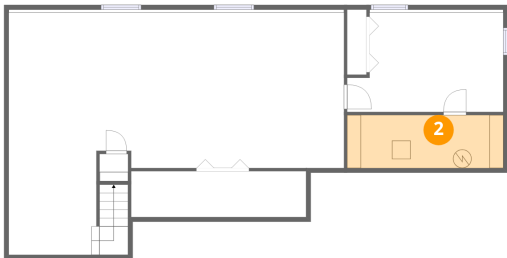
1 Floor 1 - Bedroom



Dimensions: 16'11" x 10'9"
Area: 169 sq. ft
Counted as living area: Yes

Heated: Yes
Finished: Yes
Enclosed: Yes
Contiguous: Yes
Permitted: Yes
Wet space: No
Addition: No
Conversion: No

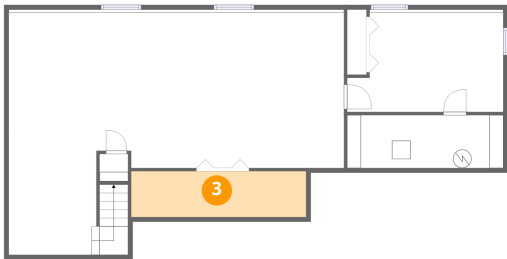
2 Floor 1 - Utility



Dimensions: 16'11" x 5'9"
Area: 97 sq. ft
Counted as living area: No

Heated: Yes
Finished: No
Enclosed: Yes
Contiguous: Yes
Permitted: Yes
Wet space: No
Addition: No
Conversion: No

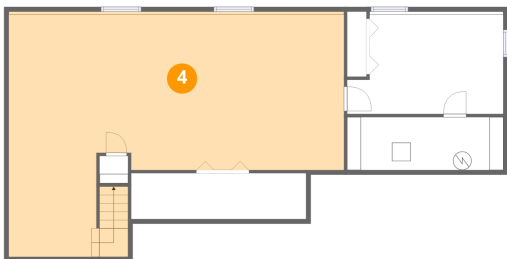
3 Floor 1 - Storage



Dimensions: 18'11" x 5'0"
Area: 94 sq. ft
Counted as living area: No

Heated: No
Finished: No
Enclosed: No
Contiguous: Yes
Permitted: Yes
Wet space: No
Addition: No
Conversion: No

4 Floor 1 - Recreation Room



Dimensions: 36'4" x 26'2"
Area: 730 sq. ft
Counted as living area: Yes

Heated: Yes
Finished: Yes
Enclosed: Yes
Contiguous: Yes
Permitted: Yes
Wet space: No
Addition: No
Conversion: No

5 Floor 2 - Bedroom



Dimensions: 9'7" x 11'7"
Area: 111 sq. ft
Counted as living area: Yes

Heated: Yes
Finished: Yes
Enclosed: Yes
Contiguous: Yes
Permitted: Yes
Wet space: No
Addition: No
Conversion: No

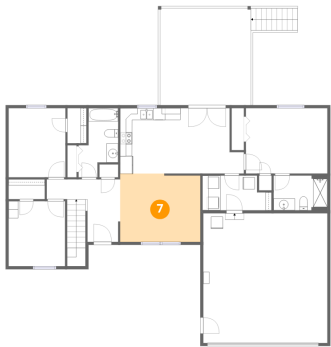
6 Floor 2 - W.I.C.



Dimensions: 3'3" x 5'11"
Area: 19 sq. ft
Counted as living area: Yes

Heated: Yes
Finished: Yes
Enclosed: Yes
Contiguous: Yes
Permitted: Yes
Wet space: No
Addition: No
Conversion: No

7 Floor 2 - Living Room



Dimensions: 13'6" x 11'6"
Area: 152 sq. ft
Counted as living area: Yes

Heated: Yes
Finished: Yes
Enclosed: Yes
Contiguous: Yes
Permitted: Yes
Wet space: No
Addition: No
Conversion: No

8 Floor 2 - Dining Area



Dimensions: 10'0" x 11'0"
Area: 93 sq. ft
Counted as living area: Yes

Heated: Yes
Finished: Yes
Enclosed: Yes
Contiguous: Yes
Permitted: Yes
Wet space: No
Addition: No
Conversion: No

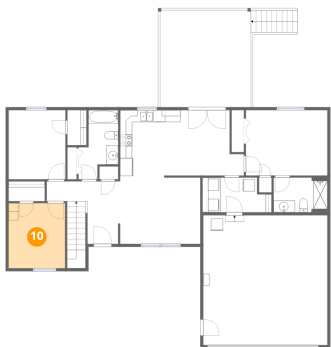
9 Floor 2 - Kitchen



Dimensions: 10'9" x 11'0"
Area: 118 sq. ft
Counted as living area: Yes

Heated: Yes
Finished: Yes
Enclosed: Yes
Contiguous: Yes
Permitted: Yes
Wet space: No
Addition: No
Conversion: No

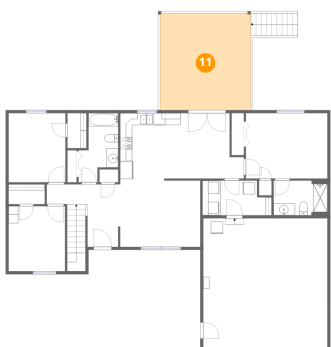
10 Floor 2 - Bedroom



Dimensions: 9'6" x 10'11"
Area: 104 sq. ft
Counted as living area: Yes

Heated: Yes
Finished: Yes
Enclosed: Yes
Contiguous: Yes
Permitted: Yes
Wet space: No
Addition: No
Conversion: No

11 Floor 2 - Covered Deck



Dimensions: 15'3" x 16'3"
Area: 248 sq. ft
Counted as living area: No

Heated: No
Finished: No
Enclosed: No
Contiguous: Yes
Permitted: Yes
Wet space: No
Addition: No
Conversion: No

12 Floor 2 - Foyer



Dimensions: 12'4" x 10'6"
Area: 115 sq. ft
Counted as living area: Yes

Heated: Yes
Finished: Yes
Enclosed: Yes
Contiguous: Yes
Permitted: Yes
Wet space: No
Addition: No
Conversion: No

13 Floor 2 - Laundry



Dimensions: 11'8" x 5'10"
Area: 61 sq. ft
Counted as living area: Yes

Heated: Yes
Finished: Yes
Enclosed: Yes
Contiguous: Yes
Permitted: Yes
Wet space: No
Addition: No
Conversion: No

14 Floor 2 - Bath



Dimensions: 9'0" x 5'10"
Area: 53 sq. ft
Counted as living area: Yes

Heated: Yes
Finished: Yes
Enclosed: Yes
Contiguous: Yes
Permitted: Yes
Wet space: Yes
Addition: No
Conversion: No

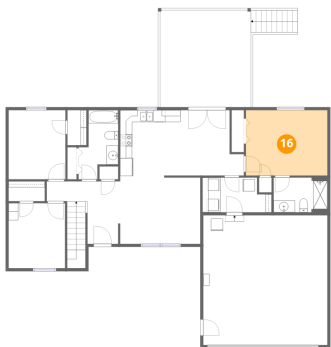
15 Floor 2 - Garage



Dimensions: 20'10" x 21'9"
Area: 454 sq. ft
Counted as living area: No

Heated: No
Finished: No
Enclosed: Yes
Contiguous: Yes
Permitted: Yes
Wet space: No
Addition: No
Conversion: No

16 Floor 2 - Primary Bedroom



Dimensions: 13'8" x 11'0"
Area: 150 sq. ft
Counted as living area: Yes

Heated: Yes
Finished: Yes
Enclosed: Yes
Contiguous: Yes
Permitted: Yes
Wet space: No
Addition: No
Conversion: No

17 Floor 2 - Bath



Dimensions: 6'8" x 11'7"
Area: 58 sq. ft
Counted as living area: Yes

Heated: Yes
Finished: Yes
Enclosed: Yes
Contiguous: Yes
Permitted: Yes
Wet space: Yes
Addition: No
Conversion: No