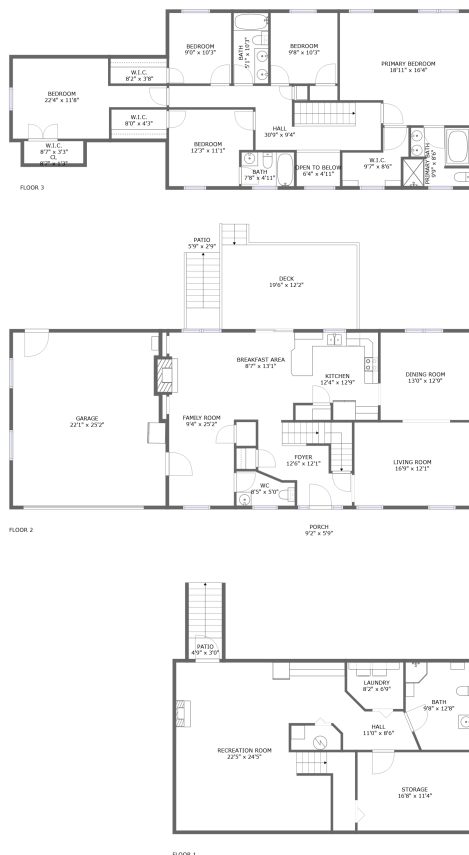


1702 Innsbrook Drive, Mountain Heights, Salem, Roanoke County, Virginia, United States, 24153



Property summary

 **1** Garages

 **5** Bedrooms

 **4** Bathrooms

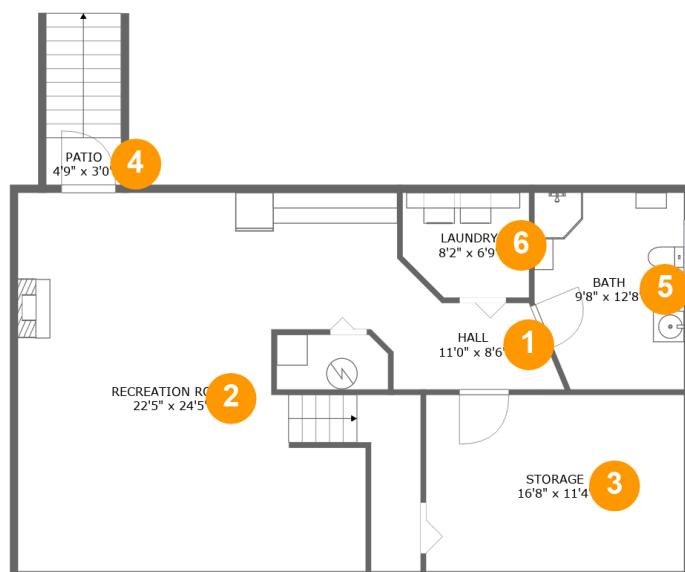
 **1** Half baths

 **3** Floors

 **3,523** Gross living area sqft

 **4,750** Total sqft

1702 Innsbrook Drive, Mountain Heights, Salem, Roanoke County, Virginia, United States, 24153



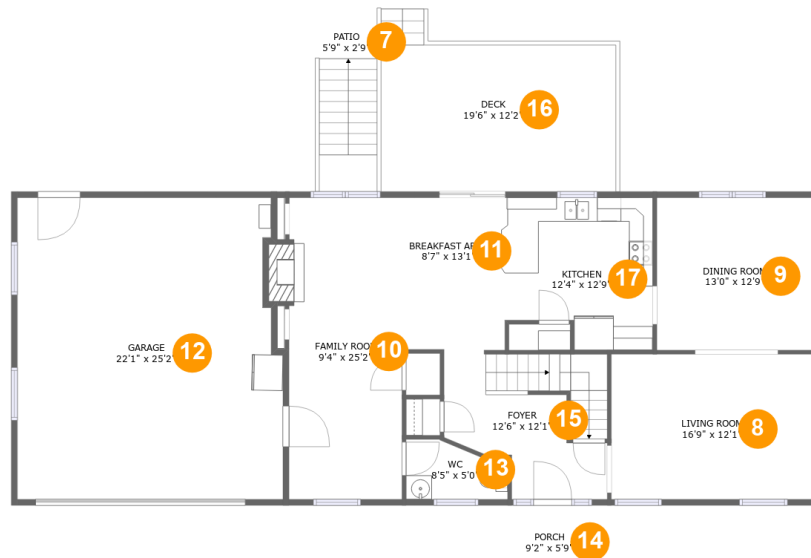
Room dimensions

Floor 1

Total sqft: 1143 Living area: 924

#		Dimensions	sqft	Counted as living area
1	Hall	11'0" x 8'6"	64 sq. ft	Yes
2	Recreation Room	22'5" x 24'5"	571 sq. ft	Yes
3	Storage	16'8" x 11'4"	189 sq. ft	No
4	Patio	4'9" x 3'0"	15 sq. ft	No
5	Bath	9'8" x 12'8"	116 sq. ft	Yes
6	Laundry	8'2" x 6'9"	52 sq. ft	Yes

1702 Innsbrook Drive, Mountain Heights, Salem, Roanoke County, Virginia, United States, 24153



Room dimensions

Floor 2

Total sqft: 2118 Living area: 1180

#		Dimensions	sqft	Counted as living area
7	Patio	5'9" x 2'9"	69 sq. ft	No
8	Living Room	16'9" x 12'1"	203 sq. ft	Yes
9	Dining Room	13'0" x 12'9"	165 sq. ft	Yes
10	Family Room	9'4" x 25'2"	244 sq. ft	Yes
11	Breakfast Area	8'7" x 13'1"	110 sq. ft	Yes
12	Garage	22'1" x 25'2"	540 sq. ft	No
13	WC	8'5" x 5'0"	36 sq. ft	Yes
14	Porch	9'2" x 5'9"	52 sq. ft	No
15	Foyer	12'6" x 12'1"	138 sq. ft	Yes
16	Deck	19'6" x 12'2"	240 sq. ft	No
17	Kitchen	12'4" x 12'9"	143 sq. ft	Yes

**1702 Innsbrook Drive, Mountain Heights, Salem,
Roanoke County, Virginia, United States, 24153**



Room dimensions

Floor 3

Total sqft: 1489

Living area: 1419

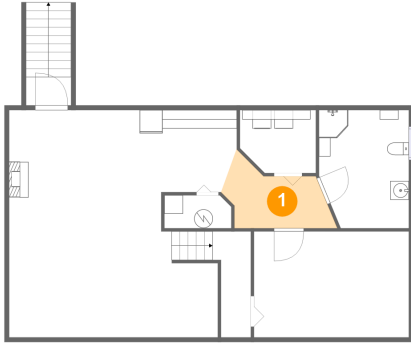
#		Dimensions	sqft	Counted as living area
18	Bedroom	22'4" x 11'8"	188 sq. ft	Yes
19	Bath	5'1" x 10'3"	52 sq. ft	Yes
20	W.I.C.	9'7" x 8'6"	55 sq. ft	Yes
21	Primary Bath	9'9" x 8'6"	75 sq. ft	Yes
22	W.I.C.	8'7" x 3'3"	17 sq. ft	No
23	Bedroom	12'3" x 11'1"	125 sq. ft	Yes
24	Primary Bedroom	18'11" x 16'4"	285 sq. ft	Yes
25	W.I.C.	8'2" x 3'8"	30 sq. ft	Yes
26	Hall	30'9" x 9'4"	178 sq. ft	Yes
27	Bedroom	9'0" x 10'3"	92 sq. ft	Yes
28	Bath	7'8" x 4'11"	38 sq. ft	Yes

**1702 Innsbrook Drive, Mountain Heights, Salem,
Roanoke County, Virginia, United States, 24153**

#		Dimensions	sqft	Counted as living area
29	Open To Below	6'4" x 4'11"	31 sq. ft	No
30	W.I.C.	8'0" x 4'3"	34 sq. ft	Yes
31	Cl	8'7" x 1'3"	11 sq. ft	No
32	Bedroom	9'8" x 10'3"	99 sq. ft	Yes

1702 Innsbrook Drive, Mountain Heights, Salem, Roanoke County, Virginia, United States, 24153

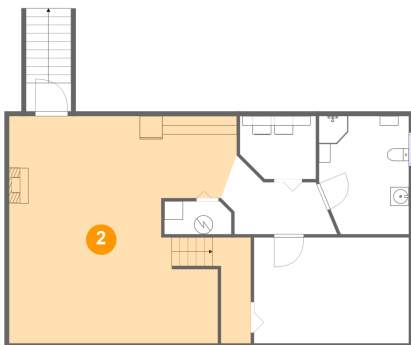
1 Floor 1 - Hall



Dimensions: 11'0" x 8'6"
Area: 64 sq. ft
Counted as living area: Yes

Heated: Yes
Finished: Yes
Enclosed: Yes
Contiguous: Yes
Permitted: Yes
Wet space: No
Addition: No
Conversion: No

2 Floor 1 - Recreation Room

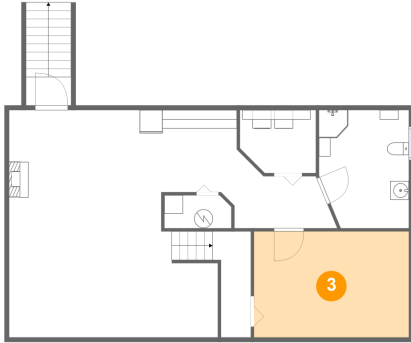


Dimensions: 22'5" x 24'5"
Area: 571 sq. ft
Counted as living area: Yes

Heated: Yes
Finished: Yes
Enclosed: Yes
Contiguous: Yes
Permitted: Yes
Wet space: No
Addition: No
Conversion: No

**1702 Innsbrook Drive, Mountain Heights, Salem,
Roanoke County, Virginia, United States, 24153**

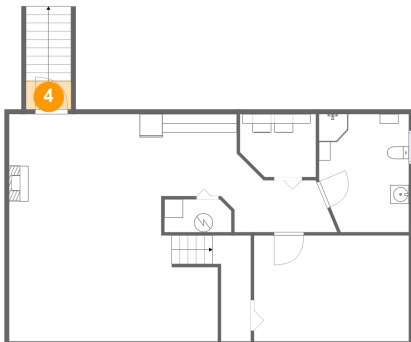
3 Floor 1 - Storage



Dimensions: 16'8" x 11'4"
Area: 189 sq. ft
Counted as living area: No

Heated: No
Finished: Yes
Enclosed: No
Contiguous: Yes
Permitted: Yes
Wet space: No
Addition: No
Conversion: No

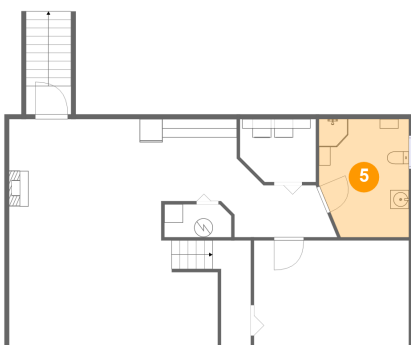
4 Floor 1 - Patio



Dimensions: 4'9" x 3'0"
Area: 15 sq. ft
Counted as living area: No

Heated: No
Finished: Yes
Enclosed: No
Contiguous: Yes
Permitted: Yes
Wet space: No
Addition: No
Conversion: No

5 Floor 1 - Bath

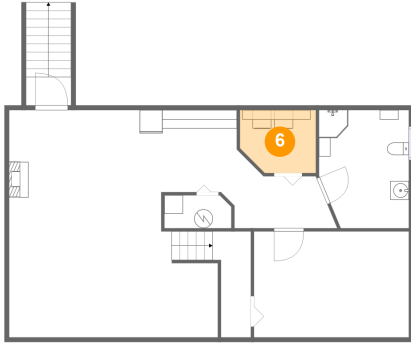


Dimensions: 9'8" x 12'8"
Area: 116 sq. ft
Counted as living area: Yes

Heated: Yes
Finished: Yes
Enclosed: Yes
Contiguous: Yes
Permitted: Yes
Wet space: Yes
Addition: No
Conversion: No

**1702 Innsbrook Drive, Mountain Heights, Salem,
Roanoke County, Virginia, United States, 24153**

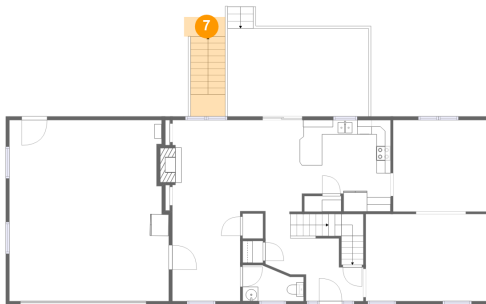
6 Floor 1 - Laundry



Dimensions: 8'2" x 6'9"
Area: 52 sq. ft
Counted as living area: Yes

Heated: Yes
Finished: Yes
Enclosed: Yes
Contiguous: Yes
Permitted: Yes
Wet space: No
Addition: No
Conversion: No

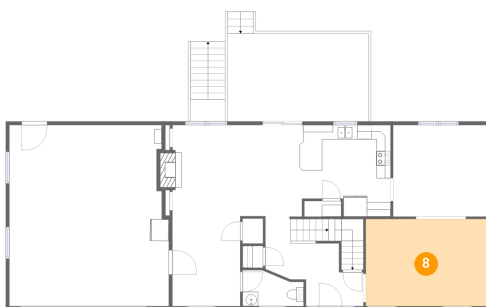
7 Floor 2 - Patio



Dimensions: 5'9" x 2'9"
Area: 69 sq. ft
Counted as living area: No

Heated: No
Finished: Yes
Enclosed: No
Contiguous: Yes
Permitted: Yes
Wet space: No
Addition: No
Conversion: No

8 Floor 2 - Living Room

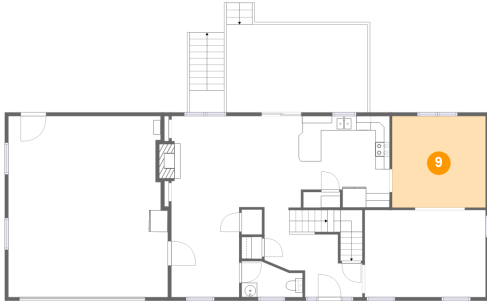


Dimensions: 16'9" x 12'1"
Area: 203 sq. ft
Counted as living area: Yes

Heated: Yes
Finished: Yes
Enclosed: Yes
Contiguous: Yes
Permitted: Yes
Wet space: No
Addition: No
Conversion: No

1702 Innsbrook Drive, Mountain Heights, Salem, Roanoke County, Virginia, United States, 24153

9 Floor 2 - Dining Room



Dimensions: 13'0" x 12'9"
Area: 165 sq. ft
Counted as living area: Yes

Heated: Yes
Finished: Yes
Enclosed: Yes
Contiguous: Yes
Permitted: Yes
Wet space: No
Addition: No
Conversion: No

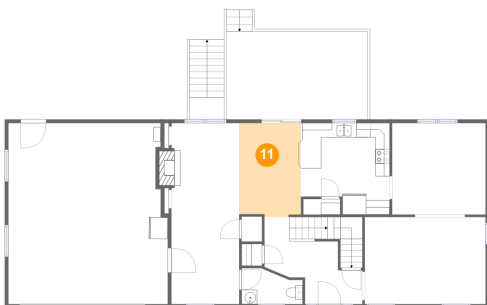
10 Floor 2 - Family Room



Dimensions: 9'4" x 25'2"
Area: 244 sq. ft
Counted as living area: Yes

Heated: Yes
Finished: Yes
Enclosed: Yes
Contiguous: Yes
Permitted: Yes
Wet space: No
Addition: No
Conversion: No

11 Floor 2 - Breakfast Area



Dimensions: 8'7" x 13'1"
Area: 110 sq. ft
Counted as living area: Yes

Heated: Yes
Finished: Yes
Enclosed: Yes
Contiguous: Yes
Permitted: Yes
Wet space: No
Addition: No
Conversion: No

**1702 Innsbrook Drive, Mountain Heights, Salem,
Roanoke County, Virginia, United States, 24153**

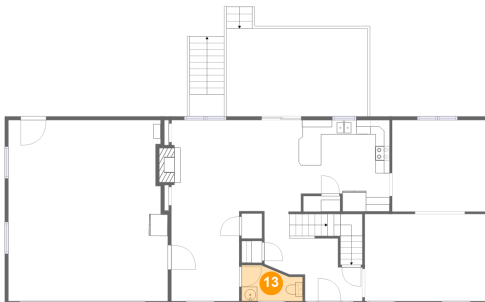
12 Floor 2 - Garage



Dimensions: 22'1" x 25'2"
Area: 540 sq. ft
Counted as living area: No

Heated: No
Finished: No
Enclosed: Yes
Contiguous: Yes
Permitted: Yes
Wet space: No
Addition: No
Conversion: No

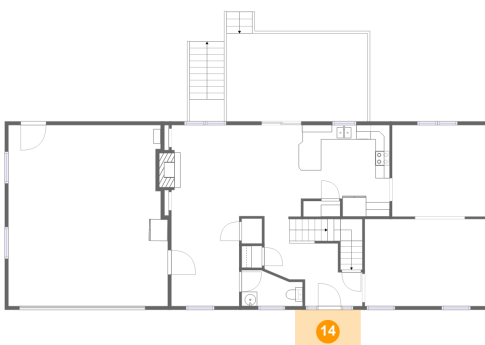
13 Floor 2 - WC



Dimensions: 8'5" x 5'0"
Area: 36 sq. ft
Counted as living area: Yes

Heated: Yes
Finished: Yes
Enclosed: Yes
Contiguous: Yes
Permitted: Yes
Wet space: Yes
Addition: No
Conversion: No

14 Floor 2 - Porch

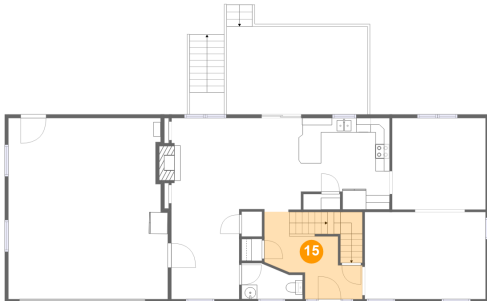


Dimensions: 9'2" x 5'9"
Area: 52 sq. ft
Counted as living area: No

Heated: No
Finished: Yes
Enclosed: No
Contiguous: Yes
Permitted: Yes
Wet space: No
Addition: No
Conversion: No

**1702 Innsbrook Drive, Mountain Heights, Salem,
Roanoke County, Virginia, United States, 24153**

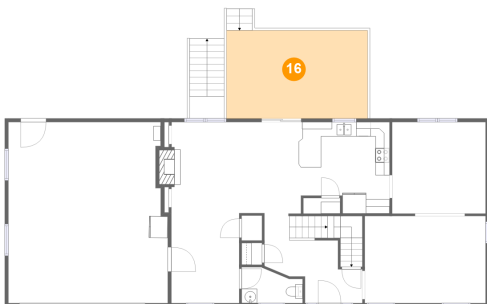
15 Floor 2 - Foyer



Dimensions: 12'6" x 12'1"
Area: 138 sq. ft
Counted as living area: Yes

Heated: Yes
Finished: Yes
Enclosed: Yes
Contiguous: Yes
Permitted: Yes
Wet space: No
Addition: No
Conversion: No

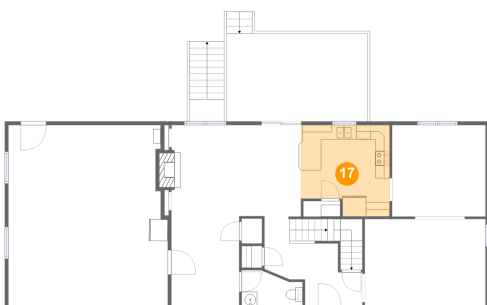
16 Floor 2 - Deck



Dimensions: 19'6" x 12'2"
Area: 240 sq. ft
Counted as living area: No

Heated: No
Finished: Yes
Enclosed: No
Contiguous: Yes
Permitted: Yes
Wet space: No
Addition: No
Conversion: No

17 Floor 2 - Kitchen

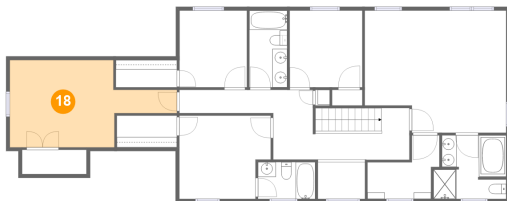


Dimensions: 12'4" x 12'9"
Area: 143 sq. ft
Counted as living area: Yes

Heated: Yes
Finished: Yes
Enclosed: Yes
Contiguous: Yes
Permitted: Yes
Wet space: No
Addition: No
Conversion: No

**1702 Innsbrook Drive, Mountain Heights, Salem,
Roanoke County, Virginia, United States, 24153**

18 Floor 3 - Bedroom



Dimensions: 22'4" x 11'8"
Area: 188 sq. ft
Counted as living area: Yes

Heated: Yes
Finished: Yes
Enclosed: Yes
Contiguous: Yes
Permitted: Yes
Wet space: No
Addition: No
Conversion: No

19 Floor 3 - Bath



Dimensions: 5'1" x 10'3"
Area: 52 sq. ft
Counted as living area: Yes

Heated: Yes
Finished: Yes
Enclosed: Yes
Contiguous: Yes
Permitted: Yes
Wet space: Yes
Addition: No
Conversion: No

20 Floor 3 - W.I.C.

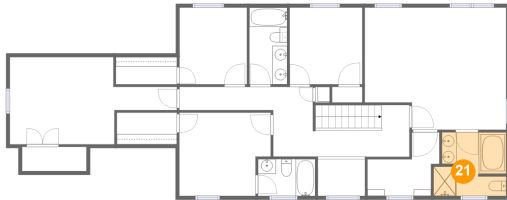


Dimensions: 9'7" x 8'6"
Area: 55 sq. ft
Counted as living area: Yes

Heated: Yes
Finished: Yes
Enclosed: Yes
Contiguous: Yes
Permitted: Yes
Wet space: No
Addition: No
Conversion: No

**1702 Innsbrook Drive, Mountain Heights, Salem,
Roanoke County, Virginia, United States, 24153**

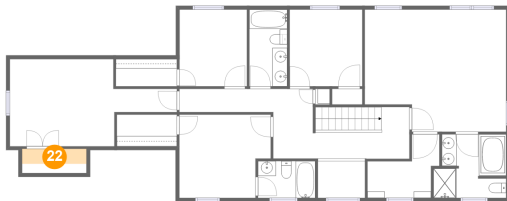
21 Floor 3 - Primary Bath



Dimensions: 9'9" x 8'6"
Area: 75 sq. ft
Counted as living area: Yes

Heated: Yes
Finished: Yes
Enclosed: Yes
Contiguous: Yes
Permitted: Yes
Wet space: Yes
Addition: No
Conversion: No

22 Floor 3 - W.I.C.



Dimensions: 8'7" x 3'3"
Area: 17 sq. ft
Counted as living area: No

Heated: Yes
Finished: No
Enclosed: Yes
Contiguous: Yes
Permitted: Yes
Wet space: No
Addition: No
Conversion: No

23 Floor 3 - Bedroom



Dimensions: 12'3" x 11'1"
Area: 125 sq. ft
Counted as living area: Yes

Heated: Yes
Finished: Yes
Enclosed: Yes
Contiguous: Yes
Permitted: Yes
Wet space: No
Addition: No
Conversion: No

**1702 Innsbrook Drive, Mountain Heights, Salem,
Roanoke County, Virginia, United States, 24153**

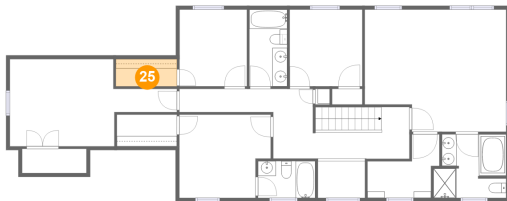
24 Floor 3 - Primary Bedroom



Dimensions: 18'11" x 16'4"
Area: 285 sq. ft
Counted as living area: Yes

Heated: Yes
Finished: Yes
Enclosed: Yes
Contiguous: Yes
Permitted: Yes
Wet space: No
Addition: No
Conversion: No

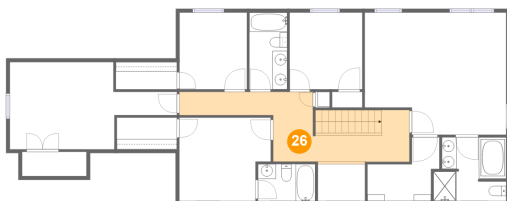
25 Floor 3 - W.I.C.



Dimensions: 8'2" x 3'8"
Area: 30 sq. ft
Counted as living area: Yes

Heated: Yes
Finished: Yes
Enclosed: Yes
Contiguous: Yes
Permitted: Yes
Wet space: No
Addition: No
Conversion: No

26 Floor 3 - Hall



Dimensions: 30'9" x 9'4"
Area: 178 sq. ft
Counted as living area: Yes

Heated: Yes
Finished: Yes
Enclosed: Yes
Contiguous: Yes
Permitted: Yes
Wet space: No
Addition: No
Conversion: No

**1702 Innsbrook Drive, Mountain Heights, Salem,
Roanoke County, Virginia, United States, 24153**

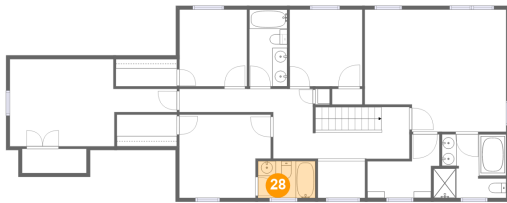
27 Floor 3 - Bedroom



Dimensions: 9'0" x 10'3"
Area: 92 sq. ft
Counted as living area: Yes

Heated: Yes
Finished: Yes
Enclosed: Yes
Contiguous: Yes
Permitted: Yes
Wet space: No
Addition: No
Conversion: No

28 Floor 3 - Bath



Dimensions: 7'8" x 4'11"
Area: 38 sq. ft
Counted as living area: Yes

Heated: Yes
Finished: Yes
Enclosed: Yes
Contiguous: Yes
Permitted: Yes
Wet space: Yes
Addition: No
Conversion: No

29 Floor 3 - Open To Below



Dimensions: 6'4" x 4'11"
Area: 31 sq. ft
Counted as living area: No

Heated: No
Finished: No
Enclosed: No
Contiguous: Yes
Permitted: No
Wet space: No
Addition: No
Conversion: No

**1702 Innsbrook Drive, Mountain Heights, Salem,
Roanoke County, Virginia, United States, 24153**

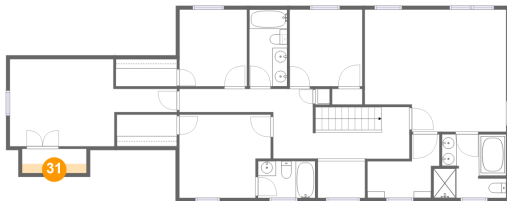
30 Floor 3 - W.I.C.



Dimensions: 8'0" x 4'3"
Area: 34 sq. ft
Counted as living area: Yes

Heated: Yes
Finished: Yes
Enclosed: Yes
Contiguous: Yes
Permitted: Yes
Wet space: No
Addition: No
Conversion: No

31 Floor 3 - Cl



Dimensions: 8'7" x 1'3"
Area: 11 sq. ft
Counted as living area: No

Heated: Yes
Finished: No
Enclosed: Yes
Contiguous: Yes
Permitted: Yes
Wet space: No
Addition: No
Conversion: No

32 Floor 3 - Bedroom



Dimensions: 9'8" x 10'3"
Area: 99 sq. ft
Counted as living area: Yes

Heated: Yes
Finished: Yes
Enclosed: Yes
Contiguous: Yes
Permitted: Yes
Wet space: No
Addition: No
Conversion: No