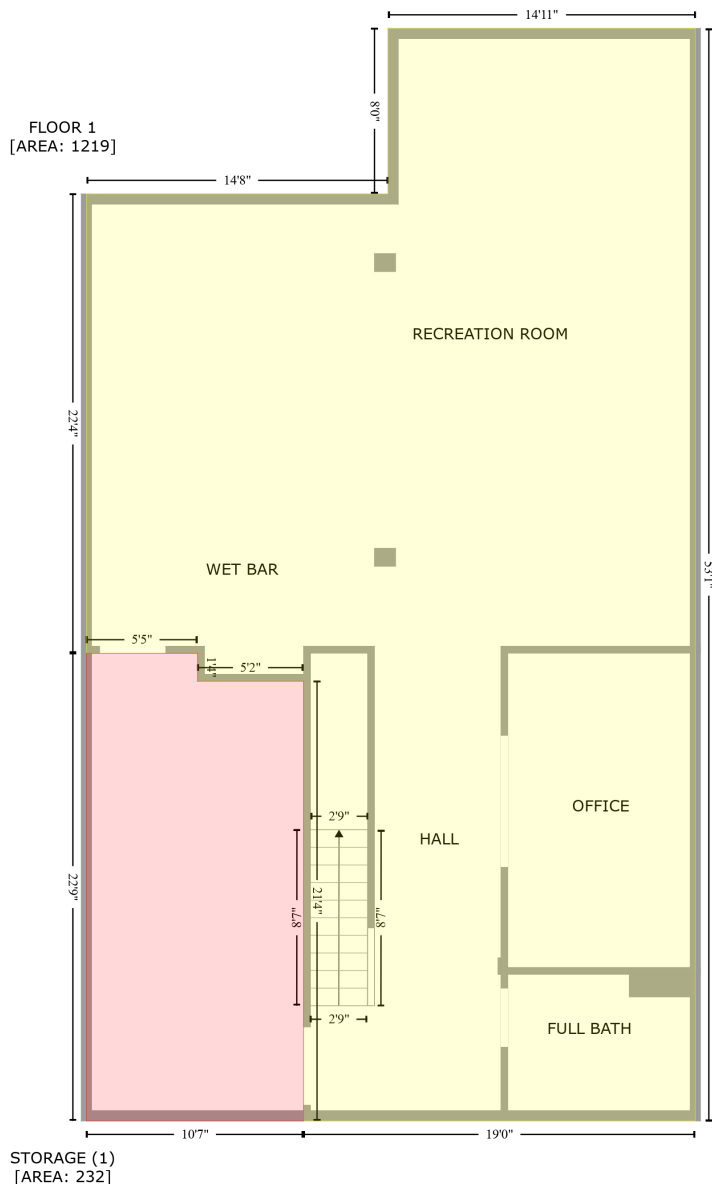


# 337 Northlands Court, Orchardview Estates, Havre de Grace, Harford County, Maryland, United States, 21078

Gross Living Area: 2609 sq. ft



Space	Area (sq. ft)	Calculation <small>Coordinate Polygon Area Algorithm using inches</small>
FLOOR 1 (Living area)	1219	$-((399.1 + 399.1) * (23.9 - 660.6) + (399.1 + 170.8) * (660.6 - 660.6) + (170.8 + 170.8) * (660.6 - 404.4) + (170.8 + 109) * (404.4 - 404.4) + (109 + 109) * (404.4 - 388.1) + (109 + 44.2) * (388.1 - 388.1) + (44.2 + 44.2) * (388.1 - 120.4) + (44.2 + 220) * (120.4 - 120.4) + (220 + 220) * (120.4 - 23.9) + (220 + 399.1) * (23.9 - 23.9)) * 0.5 * 0.00694$
STORAGE (Non-living area)	232	$-((109 + 109) * (388.1 - 404.4) + (109 + 170.8) * (404.4 - 404.4) + (170.8 + 170.8) * (404.4 - 660.6) + (170.8 + 44.2) * (660.6 - 660.6) + (44.2 + 44.2) * (660.6 - 388.1) + (44.2 + 109) * (388.1 - 388.1)) * 0.5 * 0.00694$

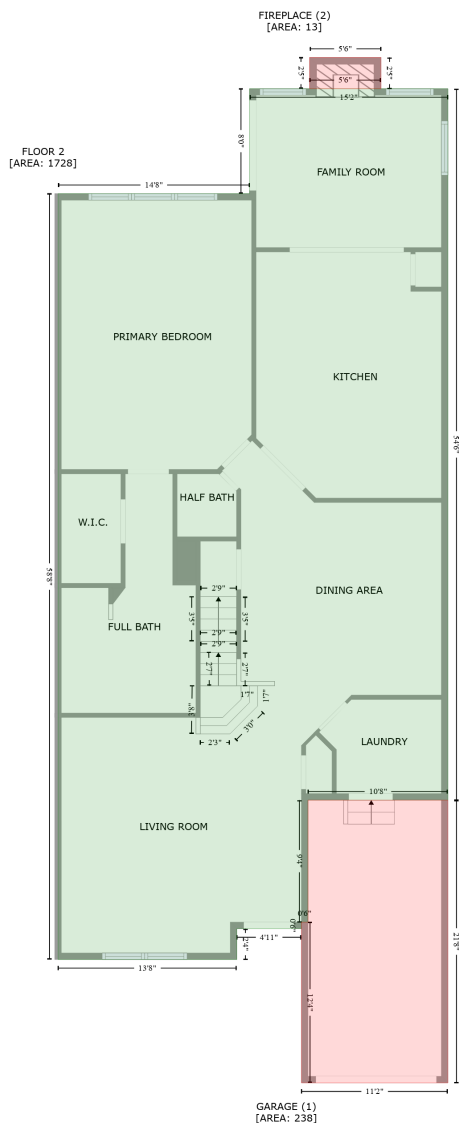
# 337 Northlands Court, Orchardview Estates, Havre de Grace, Harford County, Maryland, United States, 21078

Gross Living Area: 2609 sq. ft

Space	Area (sq. ft)	Calculation <small>Coordinate Polygon Area Algorithm using inches</small>
		388.1)) * 0.5 * 0.00694

# 337 Northlands Court, Orchardview Estates, Havre de Grace, Harford County, Maryland, United States, 21078

Gross Living Area: 2609 sq. ft



Space	Area (sq. ft)	Calculation <small>Coordinate Polygon Area Algorithm using inches</small>
FLOOR 2 (Living area)	1728	$-\left((402.1 + 402.1) * (23.9 - 678) + (402.1 + 273.6) * (678 - 678) + (273.6 + 273.6) * (678 - 790.2) + (273.6 + 267.6) * (790.2 - 790.2) + (267.6 + 267.6) * (790.2 - 796.2) + (267.6 + 208.4) * (796.2 - 796.2) + (208.4 + 208.4) * (796.2 - 824.5) + (208.4 + 44.2) * (824.5 - 824.5) + (44.2 + 44.2) * (824.5 - 120.4) + (44.2 + 220) * (120.4 - 120.4) + (220 + 220) * (120.4 - 23.9) + (220 + 402.1) * (23.9 - 23.9)\right) * 0.5 * 0.00694$
GARAGE	238	$-\left((402.1 + 402.1) * (678 - 937.9) + (402.1 + 267.6) * (937.9 - 937.9) + (267.6 + 267.6) * (937.9 - 937.9) - \right.$

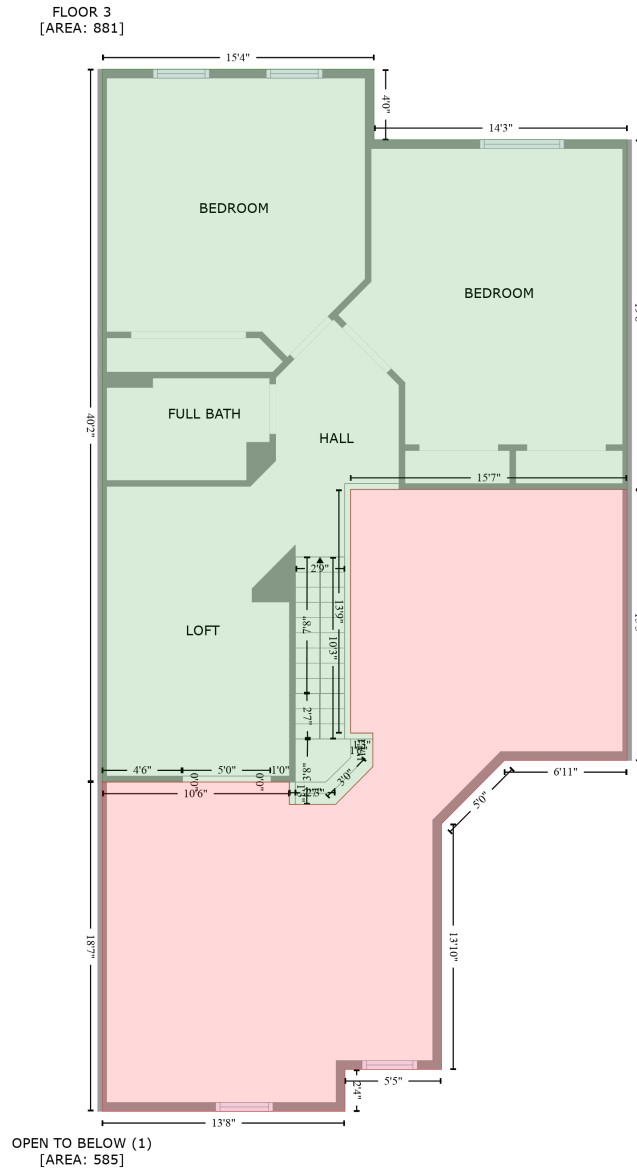
# 337 Northlands Court, Orchardview Estates, Havre de Grace, Harford County, Maryland, United States, 21078

Gross Living Area: 2609 sq. ft

Space	Area (sq. ft)	Calculation <small>Coordinate Polygon Area Algorithm using inches</small>
(Non-living area)		$790.2 + (267.6 + 273.6) * (790.2 - 790.2) + (273.6 + 273.6) * (790.2 - 678) + (273.6 + 402.1) * (678 - 678) * 0.5 * 0.00694$
FIREPLACE (Non-living area)	13	$-((340.6 + 340.6) * (-4.8 - 23.9) + (340.6 + 275.1) * (23.9 - 23.9) + (275.1 + 275.1) * (23.9 - -4.8) + (275.1 + 340.6) * (-4.8 - -4.8)) * 0.5 * 0.00694$

**337 Northlands Court, Orchardview Estates, Havre de Grace, Harford County, Maryland,  
United States, 21078**

Gross Living Area: 2609 sq. ft



Space	Area (sq. ft)	Calculation <small>Coordinate Polygon Area Algorithm using inches</small>
FLOOR 3 (Living area)	881	$  \begin{aligned}  & -((228 + 228) * (120.4 - 168) + (228 + 399.1) * (168 - 168) + (399.1 + 399.1) * (168 - 404.3) + \\  & (399.1 + 212.1) * (404.3 - 404.3) + (212.1 + 212.1) * (404.3 - 568.9) + (212.1 + 227.1) * (568.9 - \\  & 568.9) + (227.1 + 227.1) * (568.9 - 591.6) + (227.1 + 202) * (591.6 - 617) + (202 + 170.7) * (617 - \\  & 617.1) + (170.7 + 170.7) * (617.1 - 602) + (170.7 + 158.5) * (602 - 602) + (158.5 + 158.5) * (602 - \\  & 601.9) + (158.5 + 98.5) * (601.9 - 601.9) + (98.5 + 98.5) * (601.9 - 602) + (98.5 + 44.2) * (602 - \\  & 602) + (44.2 + 44.2) * (602 - 120.4) + (44.2 + 228) * (120.4 - 120.4)) * 0.5 * 0.00694  \end{aligned}  $

# 337 Northlands Court, Orchardview Estates, Havre de Grace, Harford County, Maryland, United States, 21078

Gross Living Area: 2609 sq. ft

Space	Area (sq. ft)	Calculation <small>Coordinate Polygon Area Algorithm using inches</small>
OPEN TO BELOW (Non-living area)	585	$\begin{aligned} & -((399.1 + 399.1) * (404.3 - 587.4) + (399.1 + 316.1) * (587.4 - 587.4) + (316.1 + 273.6) * (587.4 - \\ & 630.1) + (273.6 + 273.6) * (630.1 - 796.2) + (273.6 + 208.4) * (796.2 - 796.2) + (208.4 + 208.4) * \\ & (796.2 - 824.5) + (208.4 + 44.2) * (824.5 - 824.5) + (44.2 + 44.2) * (824.5 - 602) + (44.2 + 170.7) * \\ & (602 - 602) + (170.7 + 170.7) * (602 - 617.1) + (170.7 + 202) * (617.1 - 617) + (202 + 227.1) * \\ & (617 - 591.6) + (227.1 + 227.1) * (591.6 - 568.9) + (227.1 + 212.1) * (568.9 - 568.9) + (212.1 + \\ & 212.1) * (568.9 - 404.3) + (212.1 + 399.1) * (404.3 - 404.3)) * 0.5 * 0.00694 \end{aligned}$