

2203 Brookhaven Ct, Brentwood, Tennessee, United States

Gross Living Area: 3389 sq. ft



Space	Area (sq. ft)	Calculation <small>Coordinate Polygon Area Algorithm using inches</small>
FLOOR 1 (Living area)	1881	$ \begin{aligned} & -((365.8 + 365.8) * (69.5 - 116.8) + (365.8 + 436.1) * (116.8 - 116.8) + (436.1 + 436.1) * (116.8 - 92.9) \\ & + (436.1 + 496.5) * (92.9 - 92.9) + (496.5 + 496.5) * (92.9 - 116.8) + (496.5 + 711.5) * (116.8 - 116.8) \\ & + (711.5 + 711.5) * (116.8 - 577.6) + (711.5 + 675.7) * (577.6 - 577.6) + (675.7 + 652.1) * (577.6 - 601.2) \\ & + (652.1 + 605.9) * (601.2 - 601.2) + (605.9 + 582.2) * (601.2 - 577.6) + (582.2 + 478.4) * (577.6 - 577.6) \\ & + (478.4 + 478.4) * (577.6 - 641) + (478.4 + 337.5) * (641 - 641) + (337.5 + 337.5) * (641 - 635) \\ & + (337.5 + 331.5) * (635 - 635) + (331.5 + 331.5) * (635 - 471.5) + (331.5 + 387.4) * (471.5 - 471.5) \\ & + (387.4 + 387.4) * (471.5 - 392.3) + (387.4 + 264.8) * (392.3 - 392.3) \end{aligned} $

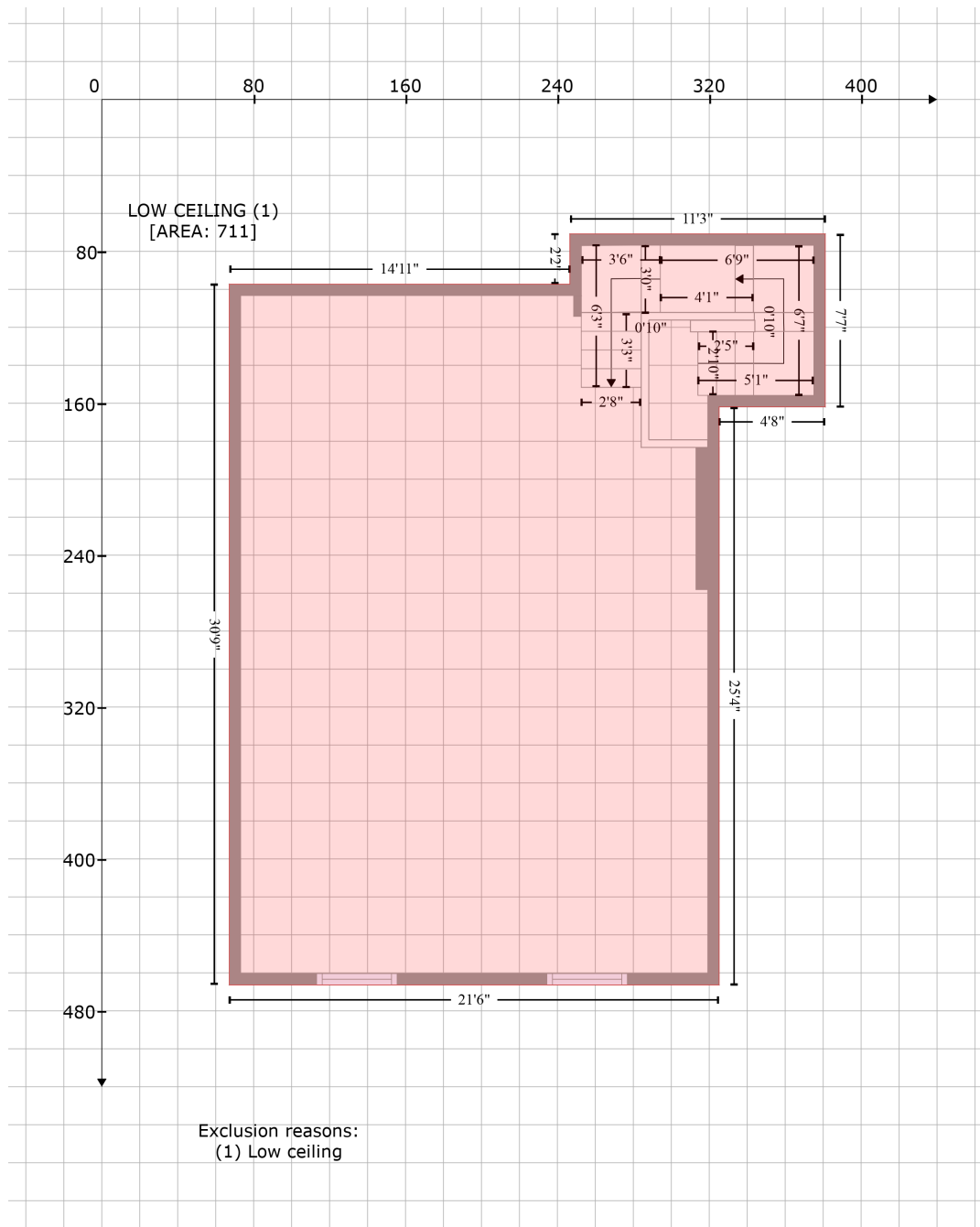
2203 Brookhaven Ct, Brentwood, Tennessee, United States

Gross Living Area: 3389 sq. ft

Space	Area (sq. ft)	Calculation <small>Coordinate Polygon Area Algorithm using inches</small>
		$392.3 + (264.8 + 264.8) * (392.3 - 418.8) + (264.8 + 85.4) * (418.8 - 418.8) + (85.4 + 85.4) * (418.8 - 412.8) + (85.4 + 82.2) * (412.8 - 412.8) + (82.2 + 79.4) * (412.8 - 412.8) + (79.4 + 79.4) * (412.8 - 69.5) + (79.4 + 365.8) * (69.5 - 69.5) * 0.5 * 0.00694 + -((79.4 + 82.2) * (412.8 - 412.8) + (82.2 + 85.4) * (412.8 - 418.8) + (85.4 + 79.4) * (418.8 - 418.8) + (79.4 + 79.4) * (418.8 - 412.8)) * 0.5 * 0.00694$
GARAGE (Non-living area)	685	$-((387.4 + 387.4) * (392.3 - 471.5) + (387.4 + 331.5) * (471.5 - 471.5) + (331.5 + 331.5) * (471.5 - 635) + (331.5 + 337.5) * (635 - 635) + (337.5 + 337.5) * (635 - 781.9) + (337.5 + 79.4) * (781.9 - 781.9) + (79.4 + 79.4) * (781.9 - 418.8) + (79.4 + 264.8) * (418.8 - 418.8) + (264.8 + 264.8) * (418.8 - 392.3) + (264.8 + 387.4) * (392.3 - 392.3)) * 0.5 * 0.00694$
PORCH (Non-living area)	39	$-((565.9 + 566) * (577.6 - 641) + (566 + 478.4) * (641 - 641) + (478.4 + 478.4) * (641 - 577.6) + (478.4 + 565.9) * (577.6 - 577.6)) * 0.5 * 0.00694$

2203 Brookhaven Ct, Brentwood, Tennessee, United States

Gross Living Area: 3389 sq. ft



Space

Area (sq. ft)

Calculation Coordinate Polygon Area Algorithm using inches

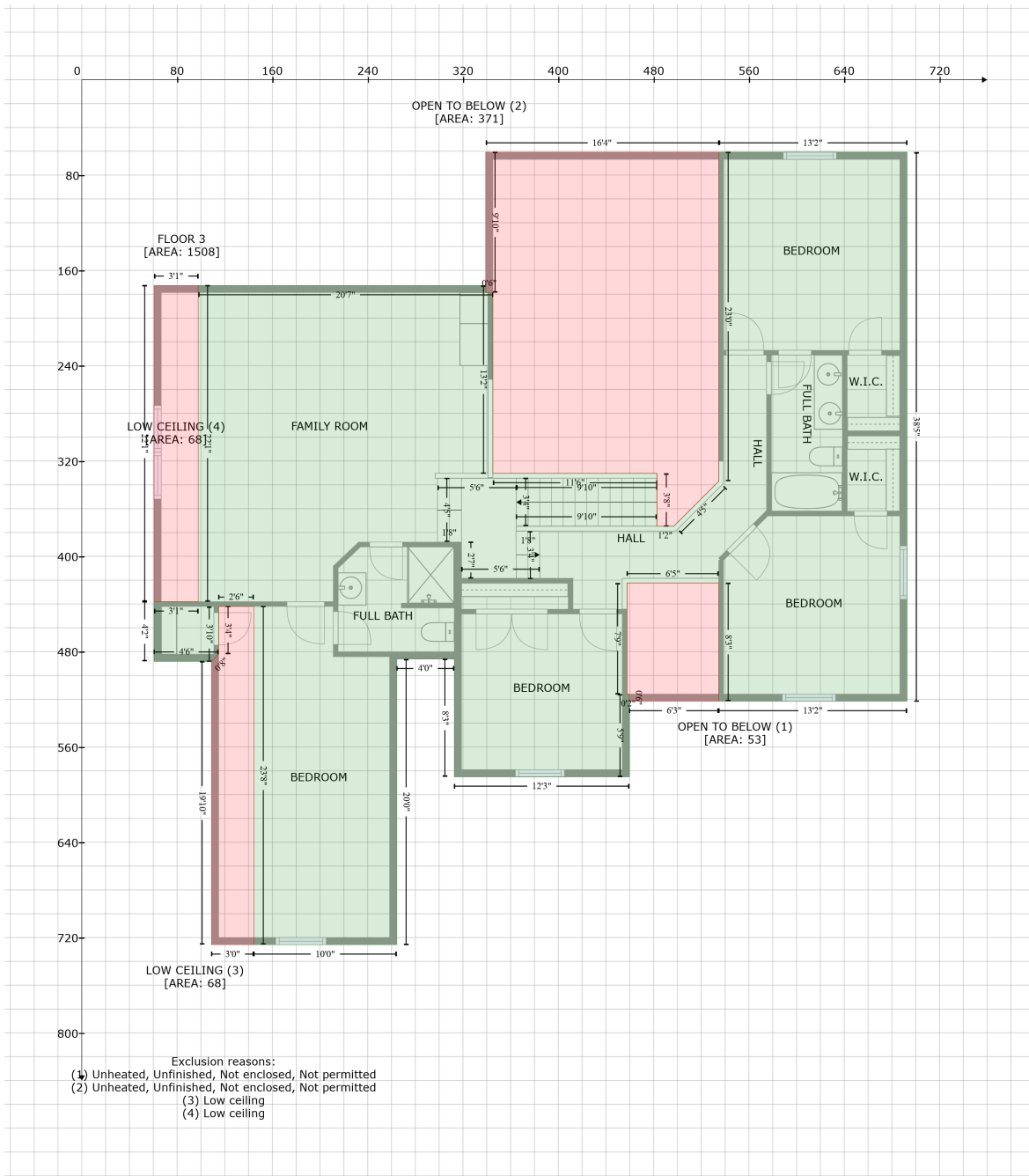
LOW CEILING
(Non-living area)

711

$-\left((381.1 + 381.1) * (70.8 - 161.9) + (381.1 + 325.2) * (161.9 - 161.9) + (325.2 + 325.2) * (161.9 - 466.4) + (325.2 + 67.1) * (466.4 - 466.4) + (67.1 + 67.1) * (466.4 - 97.3) + (67.1 + 246.6) * (97.3 - 97.3) + (246.6 + 246.6) * (97.3 - 70.8) + (246.6 + 381.1) * (70.8 - 70.8)\right) * 0.5 * 0.00694$

2203 Brookhaven Ct, Brentwood, Tennessee, United States

Gross Living Area: 3389 sq. ft



Space	Area (sq. ft)	Calculation
FLOOR 3 (Living area)	1508	Coordinate Polygon Area Algorithm using inches $-((692.7 + 692.7) * (60.8 - 521.6) + (692.7 + 534.7) * (521.6 - 521.6) + (534.7 + 534.7) * (521.6 - 422.5) + (534.7 + 457.7) * (422.5 - 422.5) + (457.7 + 457.7) * (422.5 - 515.6) + (457.7 + 459.7) * (515.6 - 515.6) + (459.7 + 459.7) * (515.6 - 585) + (459.7 + 312.7) * (585 - 585) + (312.7 + 312.7) * (585 - 486.2) + (312.7 + 264.4) * (486.2 - 486.2) + (264.4 + 264.4) * (486.2 - 726) + (264.4 + 144.5) * (726 - 726) + (144.5 + 144.5) * (726 - 442.1) + (144.5 + 114.9) * (442.1 - 442.1) + (114.9 + 114.9) * (442.1 - 482.2) + (114.9 + 108.9) * (482.2 - 488.2) + (108.9 + 60.7) * (488.2 - 488.2) + (60.7 + 60.7) * (488.2 - 438.1) + (60.7 + 97.7) * (438.1 - 438.1) + (97.7 + 97.7) * (438.1 - 172.6) +$

2203 Brookhaven Ct, Brentwood, Tennessee, United States

Gross Living Area: 3389 sq. ft

Space	Area (sq. ft)	Calculation <small>Coordinate Polygon Area Algorithm using inches</small>
		$(97.7 + 339.1) * (172.6 - 172.6) + (339.1 + 339.1) * (172.6 - 178.6) + (339.1 + 345.1) * (178.6 - 178.6) + (345.1 + 345.1) * (178.6 - 330.3) + (345.1 + 482.8) * (330.3 - 330.4) + (482.8 + 482.8) * (330.4 - 374.7) + (482.8 + 497) * (374.7 - 374.8) + (497 + 534.7) * (374.8 - 337) + (534.7 + 534.7) * (337 - 60.8) + (534.7 + 692.7) * (60.8 - 60.8) * 0.5 * 0.00694$
OPEN TO BELOW (Non-living area)	53	$-((534.7 + 534.7) * (422.5 - 521.6) + (534.7 + 459.7) * (521.6 - 521.6) + (459.7 + 459.7) * (521.6 - 515.6) + (459.7 + 457.7) * (515.6 - 515.6) + (457.7 + 457.7) * (515.6 - 422.5) + (457.7 + 534.7) * (422.5 - 422.5)) * 0.5 * 0.00694$
OPEN TO BELOW (Non-living area)	371	$-((534.7 + 534.7) * (60.8 - 337) + (534.7 + 497) * (337 - 374.8) + (497 + 482.8) * (374.8 - 374.7) + (482.8 + 482.8) * (374.7 - 330.4) + (482.8 + 345.1) * (330.4 - 330.3) + (345.1 + 345.1) * (330.3 - 178.6) + (345.1 + 339.1) * (178.6 - 178.6) + (339.1 + 339.1) * (178.6 - 60.8) + (339.1 + 534.7) * (60.8 - 60.8)) * 0.5 * 0.00694$
LOW CEILING (Non-living area)	68	$-((144.5 + 144.5) * (442.1 - 726) + (144.5 + 108.9) * (726 - 726) + (108.9 + 108.9) * (726 - 488.2) + (108.9 + 114.9) * (488.2 - 482.2) + (114.9 + 114.9) * (482.2 - 442.1) + (114.9 + 144.5) * (442.1 - 442.1)) * 0.5 * 0.00694$
LOW CEILING (Non-living area)	68	$-((97.7 + 97.7) * (172.6 - 438.1) + (97.7 + 60.7) * (438.1 - 438.1) + (60.7 + 60.7) * (438.1 - 172.6) + (60.7 + 97.7) * (172.6 - 172.6)) * 0.5 * 0.00694$