



Home report


3958 Aerie Ln,Fort Collins,CO,US





Property summary


**1** Garages


**4** Bedrooms

**3** Bathrooms

**1** Half baths

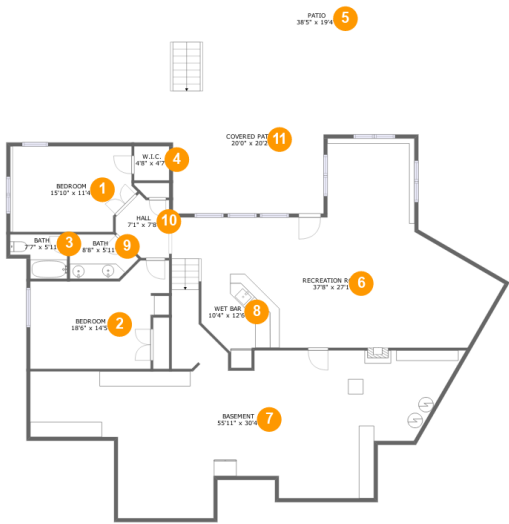
**2** Floors

**3,896** Gross living area sqft

**7,015** Total sqft

Home report

3958 Aerie Ln,Fort Collins,CO,US



Room dimensions

Floor 1 Total sqft: 3243 Living area: 1462

#		Dimensions	sqft	Counted as living area
1	Bedroom	15'10" x 11'4"	176 sq. ft	Yes
2	Bedroom	18'6" x 14'5"	210 sq. ft	Yes
3	Bath	7'7" x 5'11"	36 sq. ft	Yes
4	W.I.C.	4'8" x 4'7"	21 sq. ft	Yes
5	Patio	38'5" x 19'4"	456 sq. ft	No
6	Recreation Room	37'8" x 27'1"	684 sq. ft	Yes
7	Basement	55'11" x 30'4"	886 sq. ft	No
8	Wet Bar	10'4" x 12'6"	93 sq. ft	Yes
9	Bath	8'8" x 5'11"	45 sq. ft	Yes
10	Hall	7'1" x 7'8"	47 sq. ft	Yes
11	Covered Patio	20'0" x 20'2"	389 sq. ft	No

Home report

3958 Aerie Ln,Fort Collins,CO,US



Room dimensions

Floor 2 Total sqft: 3772    Living area: 2434

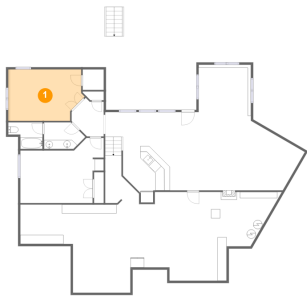
#		Dimensions	sqft	Counted as living area
12	Kitchen	23'4" x 17'1"	313 sq. ft	Yes
13	Bedroom	10'10" x 16'10"	173 sq. ft	Yes
14	Deck	20'0" x 20'3"	412 sq. ft	No
15	W.I.C.	11'7" x 9'8"	100 sq. ft	Yes
16	Garage	27'6" x 33'6"	808 sq. ft	No
17	Primary Bath	10'0" x 13'8"	110 sq. ft	Yes
18	WC	2'3" x 5'7"	13 sq. ft	Yes
19	Breakfast Nook	11'7" x 10'6"	122 sq. ft	Yes
20	Bath	7'5" x 9'0"	53 sq. ft	Yes
21	WC	5'1" x 7'0"	32 sq. ft	Yes
22	Pantry	3'9" x 4'3"	16 sq. ft	Yes

## Home report

**3958 Aerie Ln,Fort Collins,CO,US**

#		Dimensions	sqft	Counted as living area
23	Living Room	19'10" x 28'3"	513 sq. ft	Yes
24	Porch	9'7" x 8'6"	74 sq. ft	No
25	Dining Room	12'8" x 15'1"	158 sq. ft	Yes
26	Hall	5'2" x 12'10"	59 sq. ft	Yes
27	Hall	18'6" x 7'11"	94 sq. ft	Yes
28	Foyer	8'0" x 6'1"	49 sq. ft	Yes
29	Primary Bedroom	21'2" x 17'9"	344 sq. ft	Yes
30	Laundry	5'0" x 8'5"	42 sq. ft	Yes

1 Floor 1 - Bedroom



Dimensions: 15'10" x 11'4"  
Area: 176 sq. ft  
Counted as living area: Yes

Heated: Yes  
Finished: Yes  
Enclosed: Yes  
Contiguous: Yes  
Permitted: Yes  
Wet space: No  
Addition: No  
Conversion: No

2 Floor 1 - Bedroom



Dimensions: 18'6" x 14'5"  
Area: 210 sq. ft  
Counted as living area: Yes

Heated: Yes  
Finished: Yes  
Enclosed: Yes  
Contiguous: Yes  
Permitted: Yes  
Wet space: No  
Addition: No  
Conversion: No

3 Floor 1 - Bath



Dimensions: 7'7" x 5'11"  
Area: 36 sq. ft  
Counted as living area: Yes

Heated: Yes  
Finished: Yes  
Enclosed: Yes  
Contiguous: Yes  
Permitted: Yes  
Wet space: Yes  
Addition: No  
Conversion: No

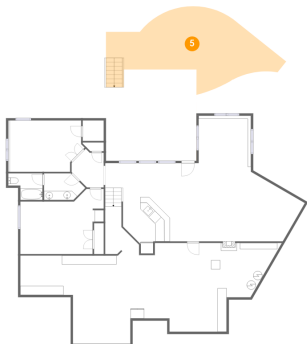
4 Floor 1 - W.I.C.



Dimensions: 4'8" x 4'7"  
Area: 21 sq. ft  
Counted as living area: Yes

Heated: Yes  
Finished: Yes  
Enclosed: Yes  
Contiguous: Yes  
Permitted: Yes  
Wet space: No  
Addition: No  
Conversion: No

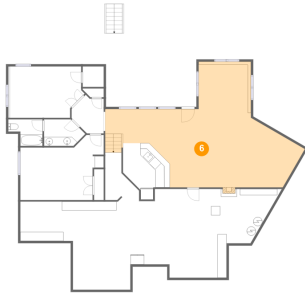
5 Floor 1 - Patio



Dimensions: 38'5" x 19'4"  
Area: 456 sq. ft  
Counted as living area: No

Heated: No  
Finished: Yes  
Enclosed: No  
Contiguous: Yes  
Permitted: Yes  
Wet space: No  
Addition: No  
Conversion: No

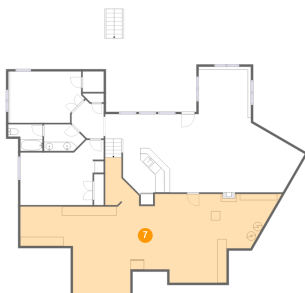
## 6 Floor 1 - Recreation Room



Dimensions: 37'8" x 27'1"  
Area: 684 sq. ft  
Counted as living area: Yes

Heated: Yes  
Finished: Yes  
Enclosed: Yes  
Contiguous: Yes  
Permitted: Yes  
Wet space: No  
Addition: No  
Conversion: No

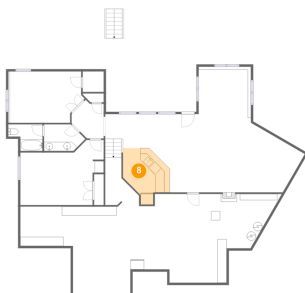
## 7 Floor 1 - Basement



Dimensions: 55'11" x 30'4"  
Area: 886 sq. ft  
Counted as living area: No

Heated: Yes  
Finished: No  
Enclosed: Yes  
Contiguous: Yes  
Permitted: Yes  
Wet space: No  
Addition: No  
Conversion: No

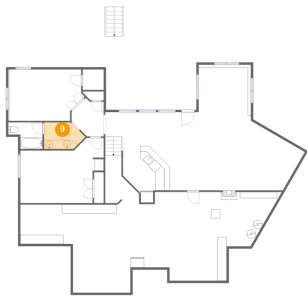
## 8 Floor 1 - Wet Bar



Dimensions: 10'4" x 12'6"  
Area: 93 sq. ft  
Counted as living area: Yes

Heated: Yes  
Finished: Yes  
Enclosed: Yes  
Contiguous: Yes  
Permitted: Yes  
Wet space: No  
Addition: No  
Conversion: No

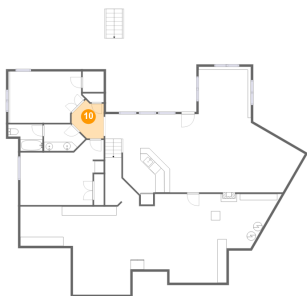
9 Floor 1 - Bath



Dimensions: 8'8" x 5'11"  
Area: 45 sq. ft  
Counted as living area: Yes

Heated: Yes  
Finished: Yes  
Enclosed: Yes  
Contiguous: Yes  
Permitted: Yes  
Wet space: Yes  
Addition: No  
Conversion: No

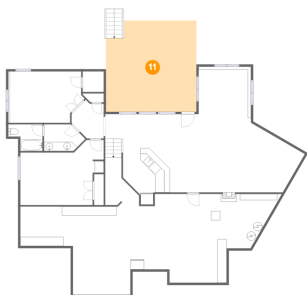
10 Floor 1 - Hall



Dimensions: 7'1" x 7'8"  
Area: 47 sq. ft  
Counted as living area: Yes

Heated: Yes  
Finished: Yes  
Enclosed: Yes  
Contiguous: Yes  
Permitted: Yes  
Wet space: No  
Addition: No  
Conversion: No

11 Floor 1 - Covered Patio

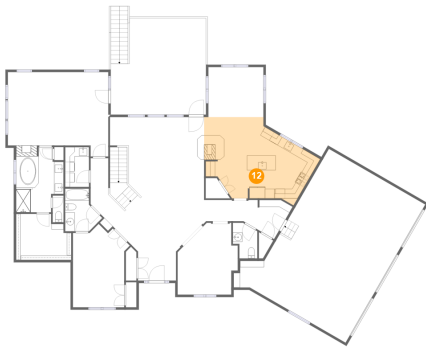


Dimensions: 20'0" x 20'2"  
Area: 389 sq. ft  
Counted as living area: No

Heated: No  
Finished: Yes  
Enclosed: No  
Contiguous: Yes  
Permitted: Yes  
Wet space: No  
Addition: No  
Conversion: No



12 Floor 2 - Kitchen



Dimensions: 23'4" x 17'1"  
Area: 313 sq. ft  
Counted as living area: Yes

Heated: Yes  
Finished: Yes  
Enclosed: Yes  
Contiguous: Yes  
Permitted: Yes  
Wet space: No  
Addition: No  
Conversion: No

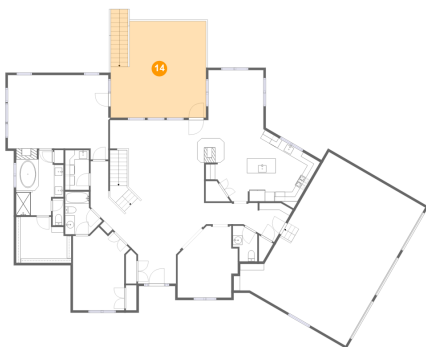
13 Floor 2 - Bedroom



Dimensions: 10'10" x 16'10"  
Area: 173 sq. ft  
Counted as living area: Yes

Heated: Yes  
Finished: Yes  
Enclosed: Yes  
Contiguous: Yes  
Permitted: Yes  
Wet space: No  
Addition: No  
Conversion: No

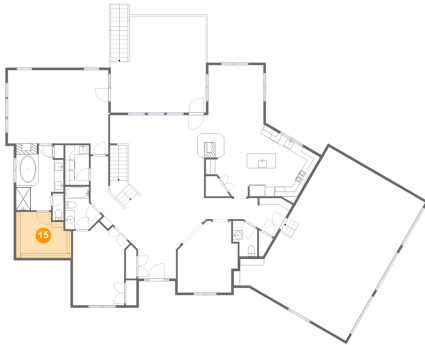
14 Floor 2 - Deck



Dimensions: 20'0" x 20'3"  
Area: 412 sq. ft  
Counted as living area: No

Heated: No  
Finished: Yes  
Enclosed: No  
Contiguous: Yes  
Permitted: Yes  
Wet space: No  
Addition: No  
Conversion: No

## 15 Floor 2 - W.I.C.



Dimensions: 11'7" x 9'8"  
Area: 100 sq. ft  
Counted as living area: Yes

Heated: Yes  
Finished: Yes  
Enclosed: Yes  
Contiguous: Yes  
Permitted: Yes  
Wet space: No  
Addition: No  
Conversion: No

## 16 Floor 2 - Garage



Dimensions: 27'6" x 33'6"  
Area: 808 sq. ft  
Counted as living area: No

Heated: No  
Finished: No  
Enclosed: Yes  
Contiguous: Yes  
Permitted: Yes  
Wet space: No  
Addition: No  
Conversion: No

## 17 Floor 2 - Primary Bath



Dimensions: 10'0" x 13'8"  
Area: 110 sq. ft  
Counted as living area: Yes

Heated: Yes  
Finished: Yes  
Enclosed: Yes  
Contiguous: Yes  
Permitted: Yes  
Wet space: Yes  
Addition: No  
Conversion: No

18 Floor 2 - WC



Dimensions: 2'3" x 5'7"  
Area: 13 sq. ft  
Counted as living area: Yes

Heated: Yes  
Finished: Yes  
Enclosed: Yes  
Contiguous: Yes  
Permitted: Yes  
Wet space: No  
Addition: No  
Conversion: No

19 Floor 2 - Breakfast Nook



Dimensions: 11'7" x 10'6"  
Area: 122 sq. ft  
Counted as living area: Yes

Heated: Yes  
Finished: Yes  
Enclosed: Yes  
Contiguous: Yes  
Permitted: Yes  
Wet space: No  
Addition: No  
Conversion: No

20 Floor 2 - Bath



Dimensions: 7'5" x 9'0"  
Area: 53 sq. ft  
Counted as living area: Yes

Heated: Yes  
Finished: Yes  
Enclosed: Yes  
Contiguous: Yes  
Permitted: Yes  
Wet space: Yes  
Addition: No  
Conversion: No

## 21 Floor 2 - WC



Dimensions: 5'1" x 7'0"  
Area: 32 sq. ft  
Counted as living area: Yes

Heated: Yes  
Finished: Yes  
Enclosed: Yes  
Contiguous: Yes  
Permitted: Yes  
Wet space: Yes  
Addition: No  
Conversion: No

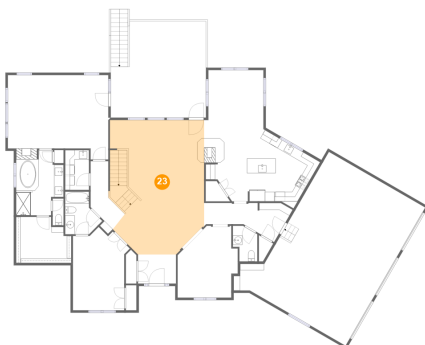
## 22 Floor 2 - Pantry



Dimensions: 3'9" x 4'3"  
Area: 16 sq. ft  
Counted as living area: Yes

Heated: Yes  
Finished: Yes  
Enclosed: Yes  
Contiguous: Yes  
Permitted: Yes  
Wet space: No  
Addition: No  
Conversion: No

## 23 Floor 2 - Living Room



Dimensions: 19'10" x 28'3"  
Area: 513 sq. ft  
Counted as living area: Yes

Heated: Yes  
Finished: Yes  
Enclosed: Yes  
Contiguous: Yes  
Permitted: Yes  
Wet space: No  
Addition: No  
Conversion: No

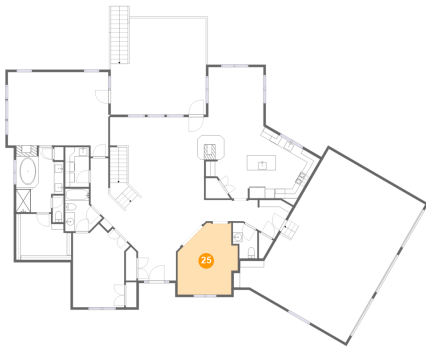
24 Floor 2 - Porch



Dimensions: 9'7" x 8'6"  
Area: 74 sq. ft  
Counted as living area: No

Heated: No  
Finished: Yes  
Enclosed: No  
Contiguous: Yes  
Permitted: Yes  
Wet space: No  
Addition: No  
Conversion: No

25 Floor 2 - Dining Room



Dimensions: 12'8" x 15'1"  
Area: 158 sq. ft  
Counted as living area: Yes

Heated: Yes  
Finished: Yes  
Enclosed: Yes  
Contiguous: Yes  
Permitted: Yes  
Wet space: No  
Addition: No  
Conversion: No

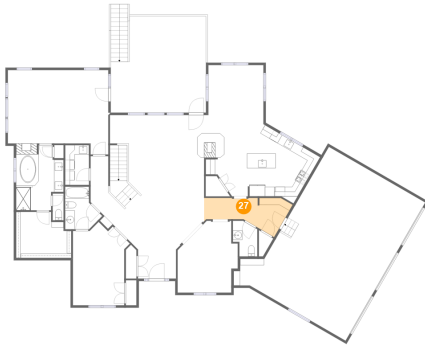
26 Floor 2 - Hall



Dimensions: 5'2" x 12'10"  
Area: 59 sq. ft  
Counted as living area: Yes

Heated: Yes  
Finished: Yes  
Enclosed: Yes  
Contiguous: Yes  
Permitted: Yes  
Wet space: No  
Addition: No  
Conversion: No

## 27 Floor 2 - Hall



Dimensions: 18'6" x 7'11"  
Area: 94 sq. ft  
Counted as living area: Yes

Heated: Yes  
Finished: Yes  
Enclosed: Yes  
Contiguous: Yes  
Permitted: Yes  
Wet space: No  
Addition: No  
Conversion: No

## 28 Floor 2 - Foyer



Dimensions: 8'0" x 6'1"  
Area: 49 sq. ft  
Counted as living area: Yes

Heated: Yes  
Finished: Yes  
Enclosed: Yes  
Contiguous: Yes  
Permitted: Yes  
Wet space: No  
Addition: No  
Conversion: No

## 29 Floor 2 - Primary Bedroom



Dimensions: 21'2" x 17'9"  
Area: 344 sq. ft  
Counted as living area: Yes

Heated: Yes  
Finished: Yes  
Enclosed: Yes  
Contiguous: Yes  
Permitted: Yes  
Wet space: No  
Addition: No  
Conversion: No

30 Floor 2 - Laundry



Dimensions: 5'0" x 8'5"  
Area: 42 sq. ft  
Counted as living area: Yes

Heated: Yes  
Finished: Yes  
Enclosed: Yes  
Contiguous: Yes  
Permitted: Yes  
Wet space: No  
Addition: No  
Conversion: No