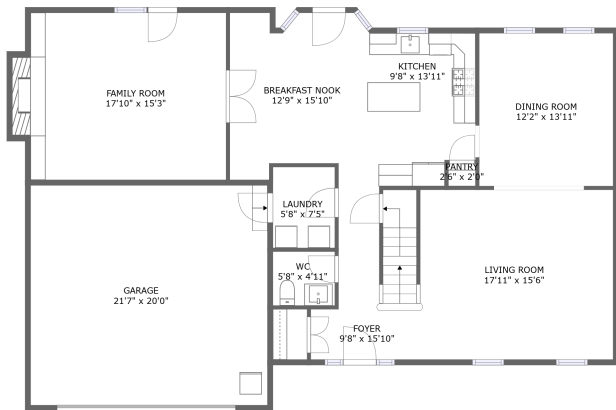
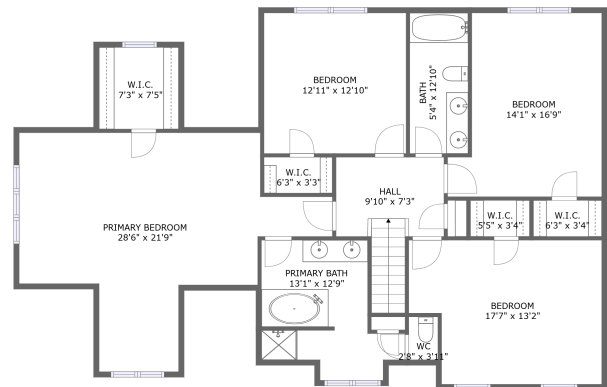


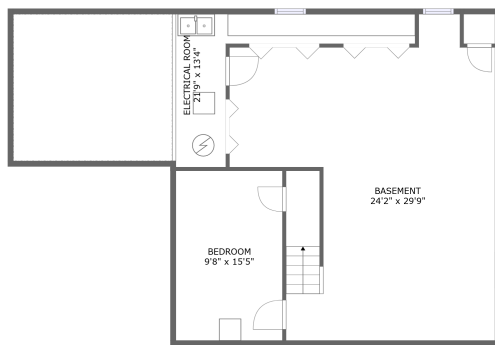
**1240 Newton Avenue, Batavia, Kane County, Illinois, United States, 60510**



FLOOR 2



FLOOR 3



FLOOR 1

## Property summary



# 1 Garages



## 5 Bedrooms



## 2 Bathrooms



# 1

## Half baths



### 3 Floors



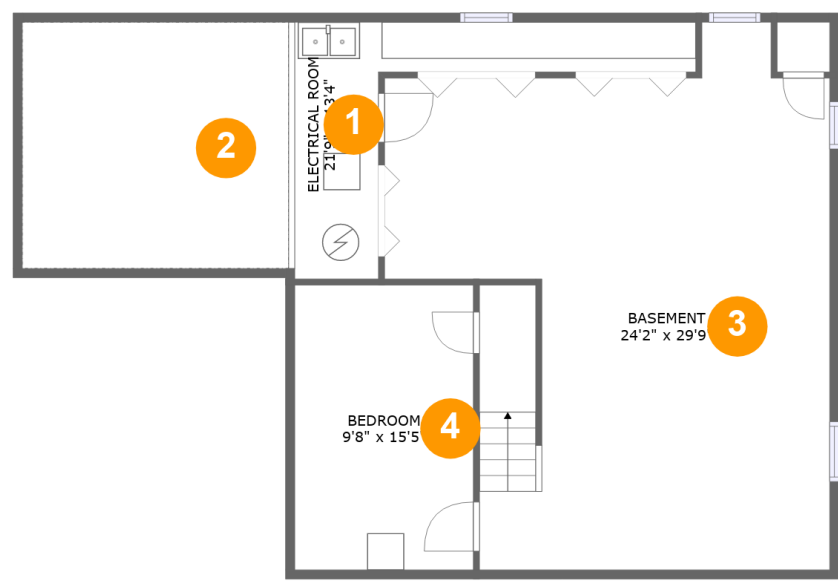
**3,700**  
Gross living  
area sqft



**4,510**  
Total sqft

Home report

1240 Newton Avenue, Batavia, Kane County, Illinois, United States, 60510



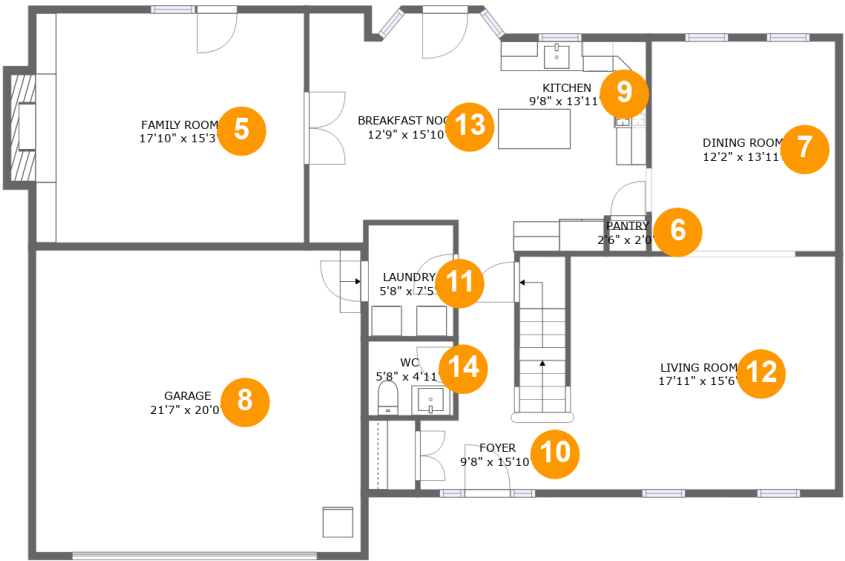
Room dimensions

Floor 1 Total sqft: 1138    Living area: 797

#		Dimensions	sqft	Counted as living area
1	Electrical Room	21'9" x 13'4"	115 sq. ft	No
2	Crawl Space	14'6" x 13'5"	194 sq. ft	No
3	Basement	24'2" x 29'9"	551 sq. ft	Yes
4	Bedroom	9'8" x 15'5"	150 sq. ft	Yes

Home report

1240 Newton Avenue, Batavia, Kane County, Illinois, United States, 60510



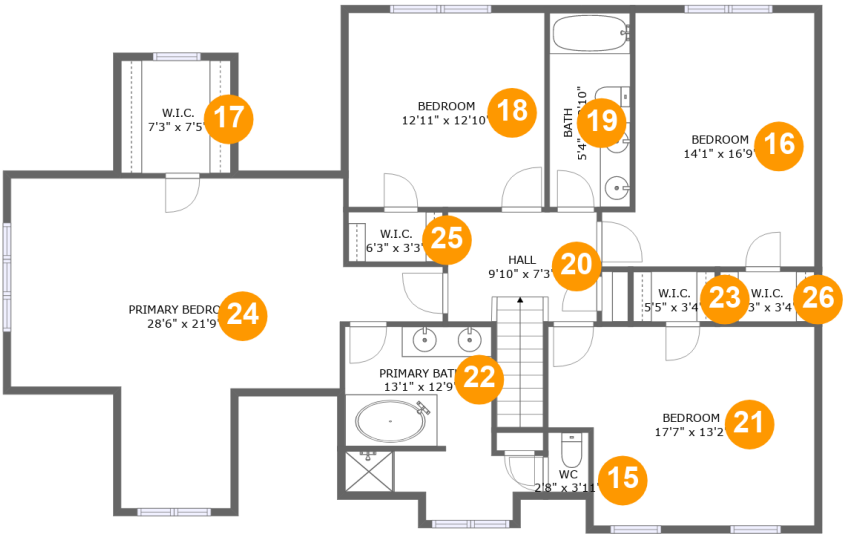
Room dimensions

Floor 2 Total sqft: 1826    Living area: 1357

#		Dimensions	sqft	Counted as living area
5	Family Room	17'10" x 15'3"	283 sq. ft	Yes
6	Pantry	2'6" x 2'0"	5 sq. ft	Yes
7	Dining Room	12'2" x 13'11"	170 sq. ft	Yes
8	Garage	21'7" x 20'0"	432 sq. ft	No
9	Kitchen	9'8" x 13'11"	128 sq. ft	Yes
10	Foyer	9'8" x 15'10"	120 sq. ft	Yes
11	Laundry	5'8" x 7'5"	42 sq. ft	Yes
12	Living Room	17'11" x 15'6"	274 sq. ft	Yes
13	Breakfast Nook	12'9" x 15'10"	181 sq. ft	Yes
14	WC	5'8" x 4'11"	28 sq. ft	Yes

Home report

1240 Newton Avenue, Batavia, Kane County, Illinois, United States, 60510



Room dimensions

Floor 3 Total sqft: 1546 Living area: 1546

#		Dimensions	sqft	Counted as living area
15	WC	2'8" x 3'11"	10 sq. ft	Yes
16	Bedroom	14'1" x 16'9"	206 sq. ft	Yes
17	W.I.C.	7'3" x 7'5"	54 sq. ft	Yes
18	Bedroom	12'11" x 12'10"	166 sq. ft	Yes
19	Bath	5'4" x 12'10"	68 sq. ft	Yes
20	Hall	9'10" x 7'3"	93 sq. ft	Yes
21	Bedroom	17'7" x 13'2"	212 sq. ft	Yes
22	Primary Bath	13'1" x 12'9"	122 sq. ft	Yes
23	W.I.C.	5'5" x 3'4"	18 sq. ft	Yes
24	Primary Bedroom	28'6" x 21'9"	384 sq. ft	Yes
25	W.I.C.	6'3" x 3'3"	20 sq. ft	Yes

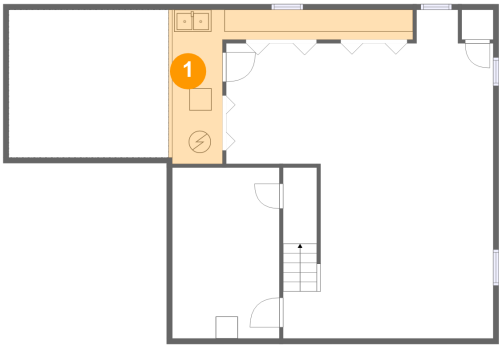
Home report

1240 Newton Avenue, Batavia, Kane County, Illinois, United States, 60510

#		Dimensions	sqft	Counted as living area
26	W.I.C.	6'3" x 3'4"	21 sq. ft	Yes

1240 Newton Avenue, Batavia, Kane County, Illinois, United States, 60510

1 Floor 1 - Electrical Room



Dimensions: 21'9" x 13'4"  
Area: 115 sq. ft  
Counted as living area: No

Heated: No  
Finished: No  
Enclosed: Yes  
Contiguous: Yes  
Permitted: Yes  
Wet space: No  
Addition: No  
Conversion: No

2 Floor 1 - Crawl Space



Dimensions: 14'6" x 13'5"  
Area: 194 sq. ft  
Counted as living area: No

Heated: No  
Finished: No  
Enclosed: No  
Contiguous: Yes  
Permitted: No  
Wet space: No  
Addition: No  
Conversion: No

1240 Newton Avenue, Batavia, Kane County, Illinois, United States, 60510

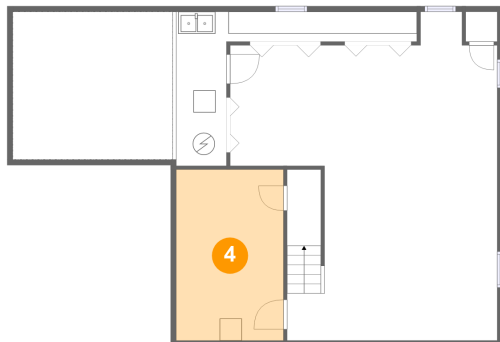
### 3 Floor 1 - Basement



Dimensions: 24'2" x 29'9"  
Area: 551 sq. ft  
Counted as living area: Yes

Heated: Yes  
Finished: Yes  
Enclosed: Yes  
Contiguous: Yes  
Permitted: Yes  
Wet space: No  
Addition: No  
Conversion: No

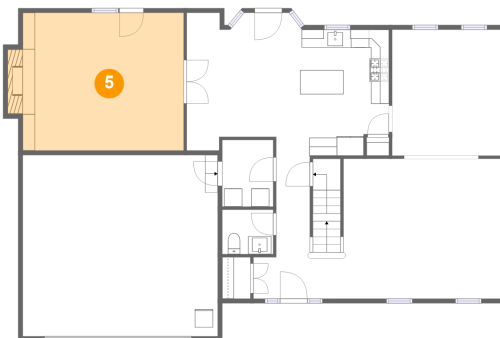
### 4 Floor 1 - Bedroom



Dimensions: 9'8" x 15'5"  
Area: 150 sq. ft  
Counted as living area: Yes

Heated: Yes  
Finished: Yes  
Enclosed: Yes  
Contiguous: Yes  
Permitted: Yes  
Wet space: No  
Addition: No  
Conversion: No

### 5 Floor 2 - Family Room

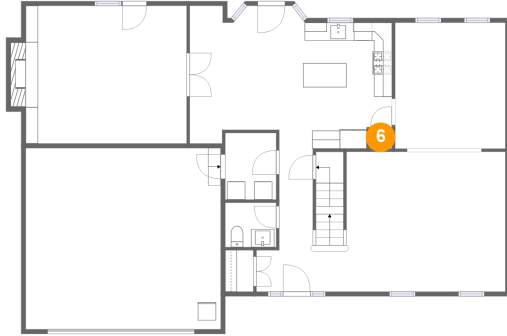


Dimensions: 17'10" x 15'3"  
Area: 283 sq. ft  
Counted as living area: Yes

Heated: Yes  
Finished: Yes  
Enclosed: Yes  
Contiguous: Yes  
Permitted: Yes  
Wet space: No  
Addition: No  
Conversion: No

1240 Newton Avenue, Batavia, Kane County, Illinois, United States, 60510

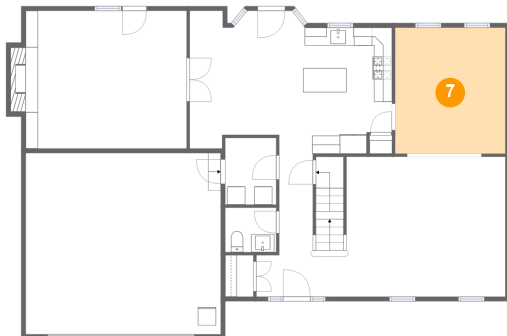
## 6 Floor 2 - Pantry



Dimensions: 2'6" x 2'0"  
Area: 5 sq. ft  
Counted as living area: Yes

Heated: Yes  
Finished: Yes  
Enclosed: Yes  
Contiguous: Yes  
Permitted: Yes  
Wet space: No  
Addition: No  
Conversion: No

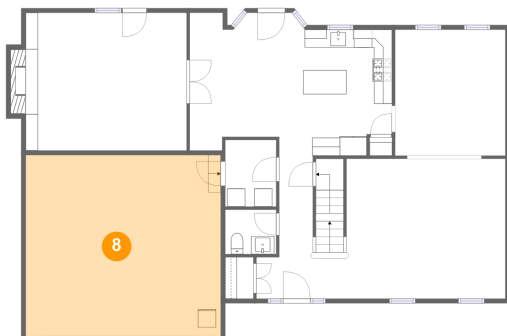
## 7 Floor 2 - Dining Room



Dimensions: 12'2" x 13'11"  
Area: 170 sq. ft  
Counted as living area: Yes

Heated: Yes  
Finished: Yes  
Enclosed: Yes  
Contiguous: Yes  
Permitted: Yes  
Wet space: No  
Addition: No  
Conversion: No

## 8 Floor 2 - Garage



Dimensions: 21'7" x 20'0"  
Area: 432 sq. ft  
Counted as living area: No

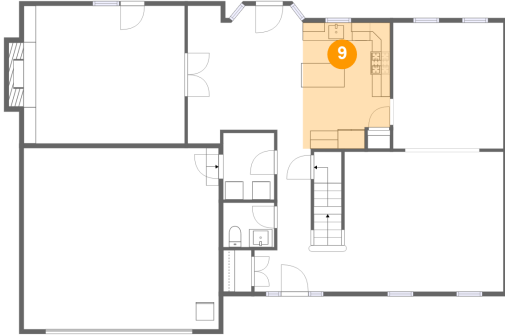
Heated: No  
Finished: No  
Enclosed: Yes  
Contiguous: Yes  
Permitted: Yes  
Wet space: No  
Addition: No  
Conversion: No



## Home report

1240 Newton Avenue, Batavia, Kane County, Illinois, United States, 60510

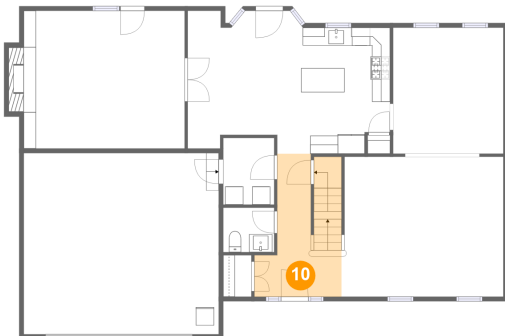
### 9 Floor 2 - Kitchen



Dimensions: 9'8" x 13'11"  
Area: 128 sq. ft  
Counted as living area: Yes

Heated: Yes  
Finished: Yes  
Enclosed: Yes  
Contiguous: Yes  
Permitted: Yes  
Wet space: No  
Addition: No  
Conversion: No

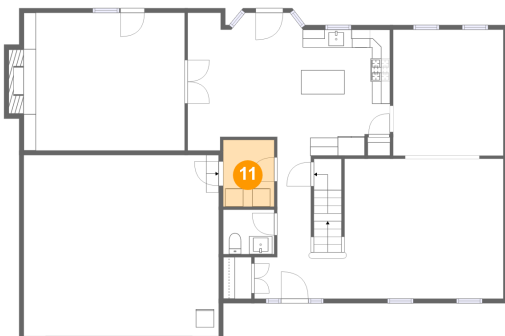
### 10 Floor 2 - Foyer



Dimensions: 9'8" x 15'10"  
Area: 120 sq. ft  
Counted as living area: Yes

Heated: Yes  
Finished: Yes  
Enclosed: Yes  
Contiguous: Yes  
Permitted: Yes  
Wet space: No  
Addition: No  
Conversion: No

### 11 Floor 2 - Laundry

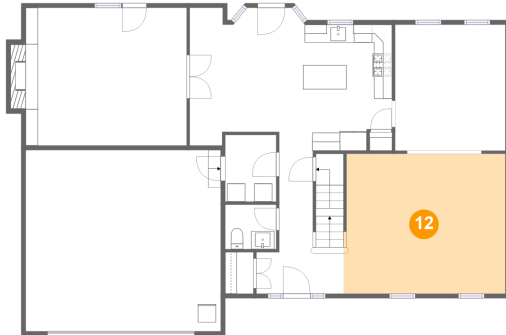


Dimensions: 5'8" x 7'5"  
Area: 42 sq. ft  
Counted as living area: Yes

Heated: Yes  
Finished: Yes  
Enclosed: Yes  
Contiguous: Yes  
Permitted: Yes  
Wet space: No  
Addition: No  
Conversion: No

1240 Newton Avenue, Batavia, Kane County, Illinois, United States, 60510

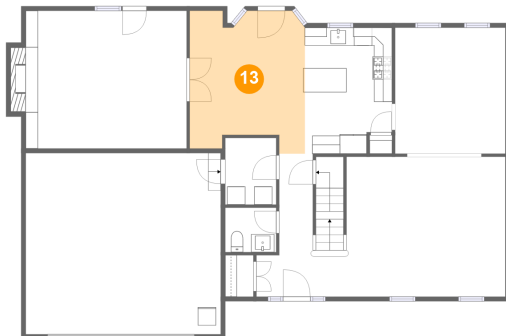
## 12 Floor 2 - Living Room



Dimensions: 17'11" x 15'6"  
Area: 274 sq. ft  
Counted as living area: Yes

Heated: Yes  
Finished: Yes  
Enclosed: Yes  
Contiguous: Yes  
Permitted: Yes  
Wet space: No  
Addition: No  
Conversion: No

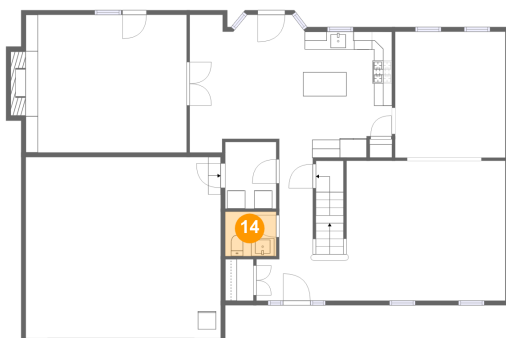
## 13 Floor 2 - Breakfast Nook



Dimensions: 12'9" x 15'10"  
Area: 181 sq. ft  
Counted as living area: Yes

Heated: Yes  
Finished: Yes  
Enclosed: Yes  
Contiguous: Yes  
Permitted: Yes  
Wet space: No  
Addition: No  
Conversion: No

## 14 Floor 2 - WC



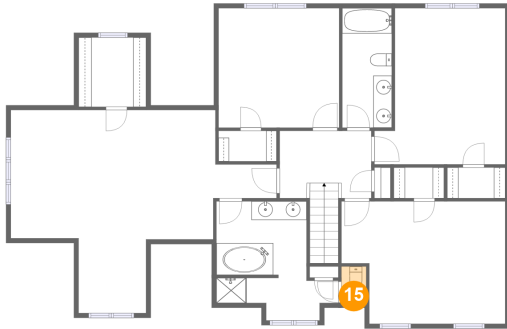
Dimensions: 5'8" x 4'11"  
Area: 28 sq. ft  
Counted as living area: Yes

Heated: Yes  
Finished: Yes  
Enclosed: Yes  
Contiguous: Yes  
Permitted: Yes  
Wet space: Yes  
Addition: No  
Conversion: No

## Home report

1240 Newton Avenue, Batavia, Kane County, Illinois, United States, 60510

### 15 Floor 3 - WC



Dimensions: 2'8" x 3'11"  
Area: 10 sq. ft  
Counted as living area: Yes

Heated: Yes  
Finished: Yes  
Enclosed: Yes  
Contiguous: Yes  
Permitted: Yes  
Wet space: Yes  
Addition: No  
Conversion: No

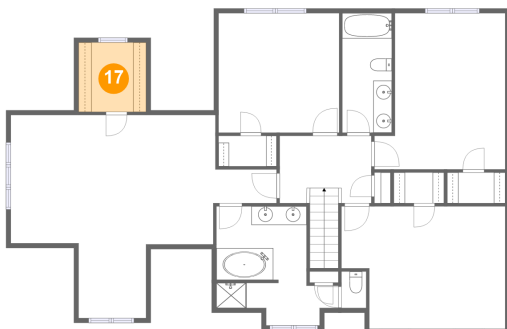
### 16 Floor 3 - Bedroom



Dimensions: 14'1" x 16'9"  
Area: 206 sq. ft  
Counted as living area: Yes

Heated: Yes  
Finished: Yes  
Enclosed: Yes  
Contiguous: Yes  
Permitted: Yes  
Wet space: No  
Addition: No  
Conversion: No

### 17 Floor 3 - W.I.C.



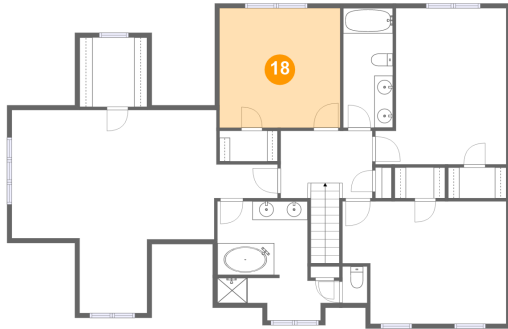
Dimensions: 7'3" x 7'5"  
Area: 54 sq. ft  
Counted as living area: Yes

Heated: Yes  
Finished: Yes  
Enclosed: Yes  
Contiguous: Yes  
Permitted: Yes  
Wet space: No  
Addition: No  
Conversion: No

## Home report

1240 Newton Avenue, Batavia, Kane County, Illinois, United States, 60510

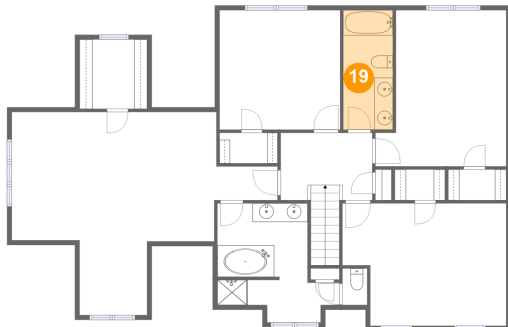
### 18 Floor 3 - Bedroom



Dimensions: 12'11" x 12'10"  
Area: 166 sq. ft  
Counted as living area: Yes

Heated: Yes  
Finished: Yes  
Enclosed: Yes  
Contiguous: Yes  
Permitted: Yes  
Wet space: No  
Addition: No  
Conversion: No

### 19 Floor 3 - Bath



Dimensions: 5'4" x 12'10"  
Area: 68 sq. ft  
Counted as living area: Yes

Heated: Yes  
Finished: Yes  
Enclosed: Yes  
Contiguous: Yes  
Permitted: Yes  
Wet space: Yes  
Addition: No  
Conversion: No

### 20 Floor 3 - Hall



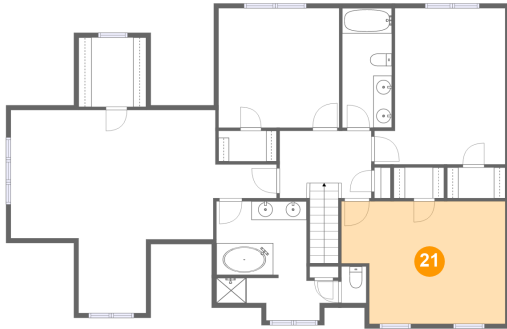
Dimensions: 9'10" x 7'3"  
Area: 93 sq. ft  
Counted as living area: Yes

Heated: Yes  
Finished: Yes  
Enclosed: Yes  
Contiguous: Yes  
Permitted: Yes  
Wet space: No  
Addition: No  
Conversion: No

## Home report

1240 Newton Avenue, Batavia, Kane County, Illinois, United States, 60510

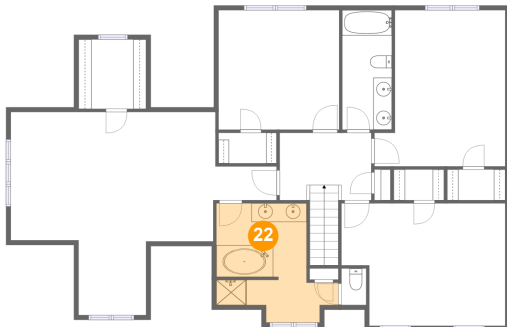
### 21 Floor 3 - Bedroom



Dimensions: 17'7" x 13'2"  
Area: 212 sq. ft  
Counted as living area: Yes

Heated: Yes  
Finished: Yes  
Enclosed: Yes  
Contiguous: Yes  
Permitted: Yes  
Wet space: No  
Addition: No  
Conversion: No

### 22 Floor 3 - Primary Bath



Dimensions: 13'1" x 12'9"  
Area: 122 sq. ft  
Counted as living area: Yes

Heated: Yes  
Finished: Yes  
Enclosed: Yes  
Contiguous: Yes  
Permitted: Yes  
Wet space: Yes  
Addition: No  
Conversion: No

### 23 Floor 3 - W.I.C.

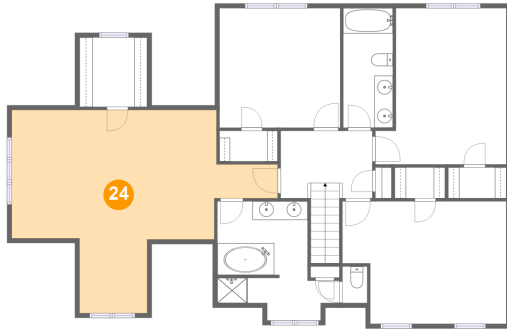


Dimensions: 5'5" x 3'4"  
Area: 18 sq. ft  
Counted as living area: Yes

Heated: Yes  
Finished: Yes  
Enclosed: Yes  
Contiguous: Yes  
Permitted: Yes  
Wet space: No  
Addition: No  
Conversion: No

1240 Newton Avenue, Batavia, Kane County, Illinois, United States, 60510

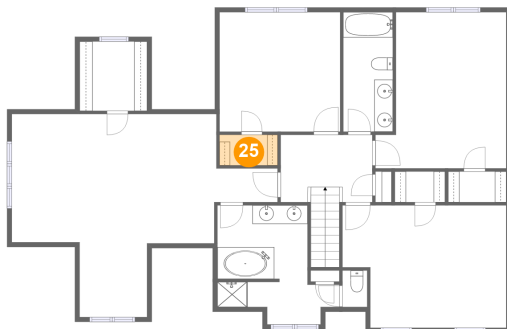
### 24 Floor 3 - Primary Bedroom



Dimensions: 28'6" x 21'9"  
Area: 384 sq. ft  
Counted as living area: Yes

Heated: Yes  
Finished: Yes  
Enclosed: Yes  
Contiguous: Yes  
Permitted: Yes  
Wet space: No  
Addition: No  
Conversion: No

### 25 Floor 3 - W.I.C.



Dimensions: 6'3" x 3'3"  
Area: 20 sq. ft  
Counted as living area: Yes

Heated: Yes  
Finished: Yes  
Enclosed: Yes  
Contiguous: Yes  
Permitted: Yes  
Wet space: No  
Addition: No  
Conversion: No

### 26 Floor 3 - W.I.C.



Dimensions: 6'3" x 3'4"  
Area: 21 sq. ft  
Counted as living area: Yes

Heated: Yes  
Finished: Yes  
Enclosed: Yes  
Contiguous: Yes  
Permitted: Yes  
Wet space: No  
Addition: No  
Conversion: No