



Home report


94 Troutman Road, Jefferson Township, Hermitage, Mercer
County, Pennsylvania, United States, 16148




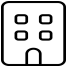
Property summary



1 Garages



3 Bedrooms


2 Bathrooms


1 Half baths


3 Floors


1,876 Gross living area sqft


7,575 Total sqft

Home report

94 Troutman Road, Jefferson Township, Hermitage, Mercer
County, Pennsylvania, United States, 16148



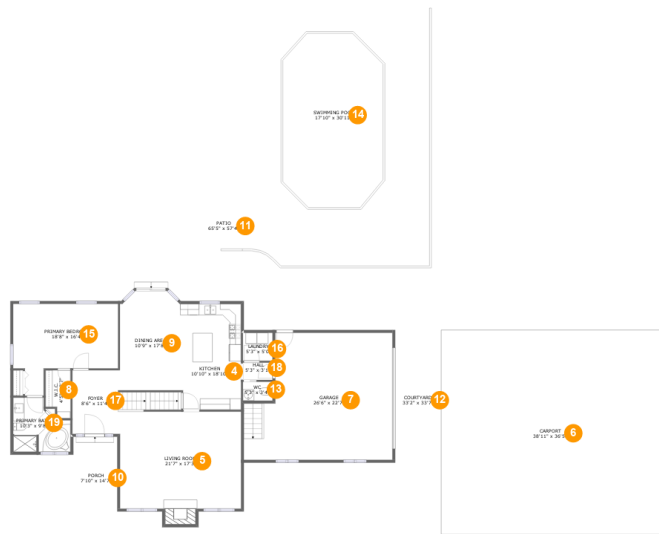
Room dimensions

Floor 1 Total sqft: 1425 Living area: 0

#		Max Dimensions	sqft	Included
1	Recreation Room	18'9" x 26'4"	426 sq. ft	No
2	Basement	27'3" x 38'9"	851 sq. ft	No
3	Hall	3'3" x 6'9"	43 sq. ft	No

Home report

94 Troutman Road, Jefferson Township, Hermitage, Mercer County, Pennsylvania, United States, 16148



Room dimensions

Floor 2 Total sqft: 5305 Living area: 1432

#		Max Dimensions	sqft	Included
4	Kitchen	10'10" x 18'10"	202 sq. ft	Yes
5	Living Room	21'7" x 17'3"	388 sq. ft	Yes
6	Carport	38'11" x 36'5"	1417 sq. ft	No
7	Garage	26'6" x 22'7"	528 sq. ft	No
8	W.I.C.	4'5" x 8'7"	34 sq. ft	Yes
9	Dining Area	10'9" x 17'8"	184 sq. ft	Yes
10	Porch	7'10" x 14'7"	114 sq. ft	No
11	Patio	65'5" x 57'4"	2269 sq. ft	No
12	Courtyard	33'2" x 33'7"	483 sq. ft	No
13	WC	5'3" x 3'4"	18 sq. ft	Yes
14	Swimming Pool	17'10" x 30'11"	508 sq. ft	No

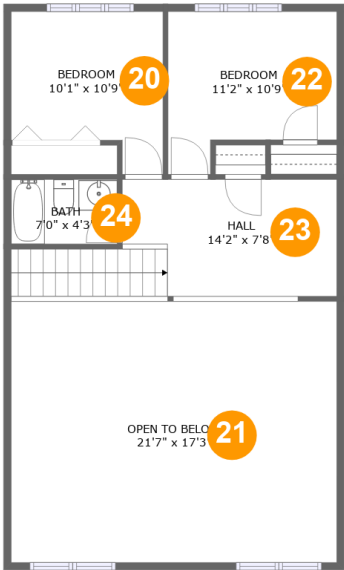
Home report

94 Troutman Road, Jefferson Township, Hermitage, Mercer County, Pennsylvania, United States, 16148

#		Max Dimensions	sqft	Included
15	Primary Bedroom	18'8" x 16'4"	231 sq. ft	Yes
16	Laundry	5'3" x 5'0"	26 sq. ft	Yes
17	Foyer	8'6" x 11'4"	132 sq. ft	Yes
18	Hall	5'3" x 3'1"	16 sq. ft	Yes
19	Primary Bath	10'3" x 9'8"	80 sq. ft	Yes

Home report

94 Troutman Road, Jefferson Township, Hermitage, Mercer
County, Pennsylvania, United States, 16148



Room dimensions

Floor 3

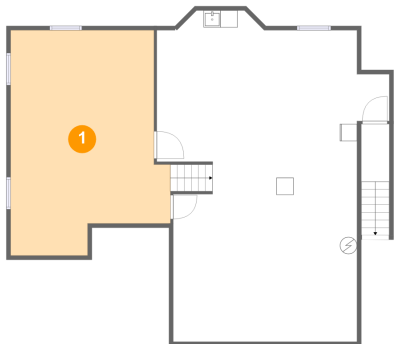
Total sqft: 845

Living area: 444

#		Max Dimensions	sqft	Included
20	Bedroom	10'1" x 10'9"	92 sq. ft	Yes
21	Open To Below	21'7" x 17'3"	372 sq. ft	No
22	Bedroom	11'2" x 10'9"	101 sq. ft	Yes
23	Hall	14'2" x 7'8"	139 sq. ft	Yes
24	Bath	7'0" x 4'3"	30 sq. ft	Yes

94 Troutman Road, Jefferson Township, Hermitage, Mercer
County, Pennsylvania, United States, 16148

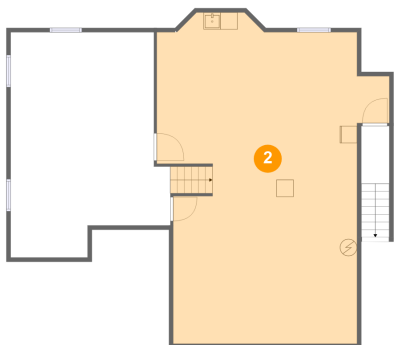
1 Floor 1 - Recreation Room



Max Dimensions: 18'9" x 26'4"
Calculated Area: 426 sq. ft
Included: No

Heated: Yes
Finished: Yes
Enclosed: Yes
Contiguous: No
Permitted: Yes
Wet space: No
Addition: No
Conversion: No

2 Floor 1 - Basement

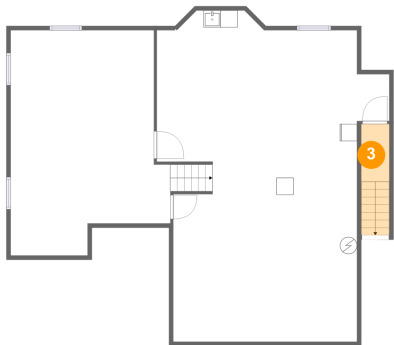


Max Dimensions: 27'3" x 38'9"
Calculated Area: 851 sq. ft
Included: No

Heated: Yes
Finished: No
Enclosed: Yes
Contiguous: Yes
Permitted: Yes
Wet space: No
Addition: No
Conversion: No

94 Troutman Road, Jefferson Township, Hermitage, Mercer
County, Pennsylvania, United States, 16148

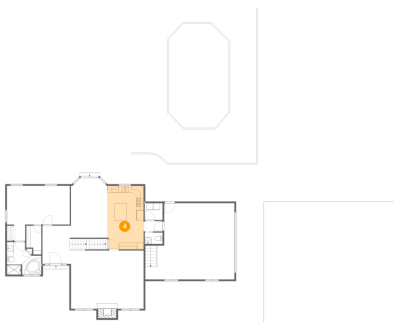
3 Floor 1 - Hall



Max Dimensions: 3'3" x 6'9"
Calculated Area: 43 sq. ft
Included: No

Heated: Yes
Finished: Yes
Enclosed: Yes
Contiguous: No
Permitted: Yes
Wet space: No
Addition: No
Conversion: No

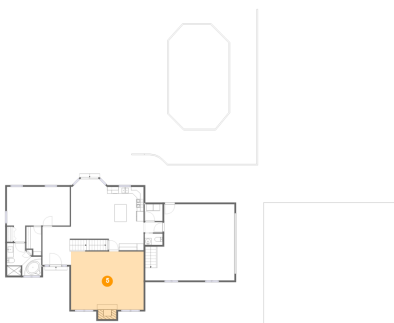
4 Floor 2 - Kitchen



Max Dimensions: 10'10" x 18'10"
Calculated Area: 202 sq. ft
Included: Yes

Heated: Yes
Finished: Yes
Enclosed: Yes
Contiguous: Yes
Permitted: Yes
Wet space: No
Addition: No
Conversion: No

5 Floor 2 - Living Room

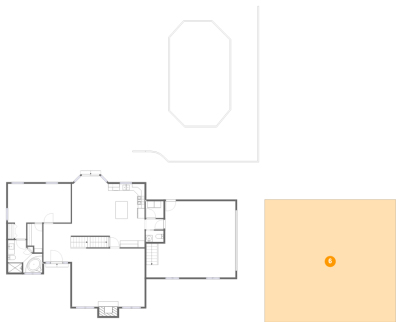


Max Dimensions: 21'7" x 17'3"
Calculated Area: 388 sq. ft
Included: Yes

Heated: Yes
Finished: Yes
Enclosed: Yes
Contiguous: Yes
Permitted: Yes
Wet space: No
Addition: No
Conversion: No

94 Troutman Road, Jefferson Township, Hermitage, Mercer
County, Pennsylvania, United States, 16148

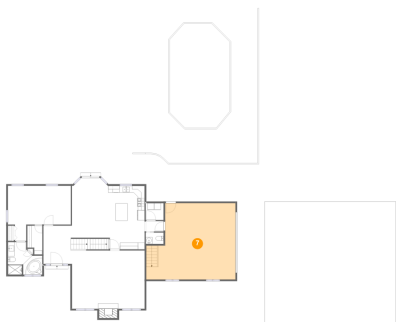
6 Floor 2 - Carport



Max Dimensions: 38'11" x 36'5"
Calculated Area: 1417 sq. ft
Included: No

Heated: No
Finished: Yes
Enclosed: No
Contiguous: Yes
Permitted: Yes
Wet space: No
Addition: No
Conversion: No

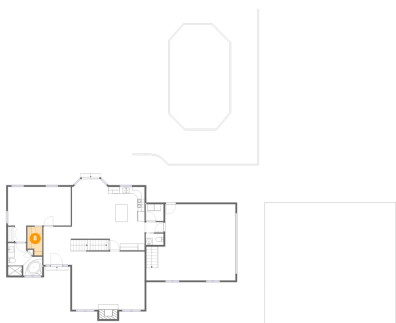
7 Floor 2 - Garage



Max Dimensions: 26'6" x 22'7"
Calculated Area: 528 sq. ft
Included: No

Heated: No
Finished: No
Enclosed: Yes
Contiguous: Yes
Permitted: Yes
Wet space: No
Addition: No
Conversion: No

8 Floor 2 - W.I.C.

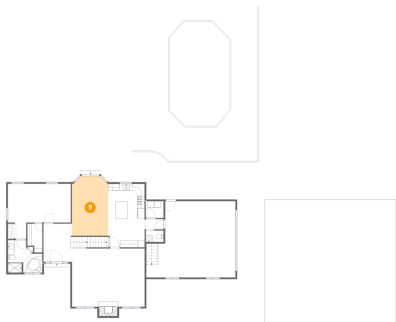


Max Dimensions: 4'5" x 8'7"
Calculated Area: 34 sq. ft
Included: Yes

Heated: Yes
Finished: Yes
Enclosed: Yes
Contiguous: Yes
Permitted: Yes
Wet space: No
Addition: No
Conversion: No

94 Troutman Road, Jefferson Township, Hermitage, Mercer
County, Pennsylvania, United States, 16148

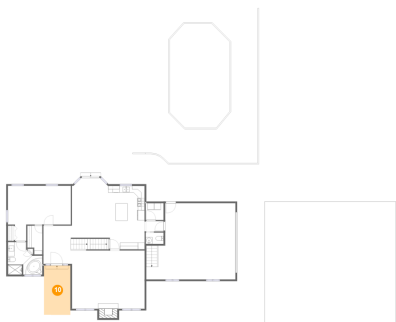
9 Floor 2 - Dining Area



Max Dimensions: 10'9" x 17'8"
Calculated Area: 184 sq. ft
Included: Yes

Heated: Yes
Finished: Yes
Enclosed: Yes
Contiguous: Yes
Permitted: Yes
Wet space: No
Addition: No
Conversion: No

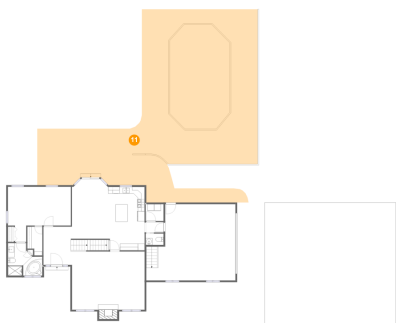
10 Floor 2 - Porch



Max Dimensions: 7'10" x 14'7"
Calculated Area: 114 sq. ft
Included: No

Heated: No
Finished: Yes
Enclosed: No
Contiguous: Yes
Permitted: Yes
Wet space: No
Addition: No
Conversion: No

11 Floor 2 - Patio

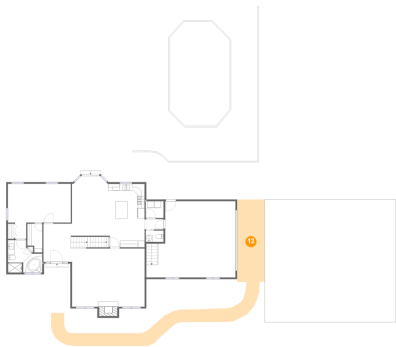


Max Dimensions: 65'5" x 57'4"
Calculated Area: 2269 sq. ft
Included: No

Heated: No
Finished: Yes
Enclosed: No
Contiguous: Yes
Permitted: Yes
Wet space: No
Addition: No
Conversion: No

94 Troutman Road, Jefferson Township, Hermitage, Mercer
County, Pennsylvania, United States, 16148

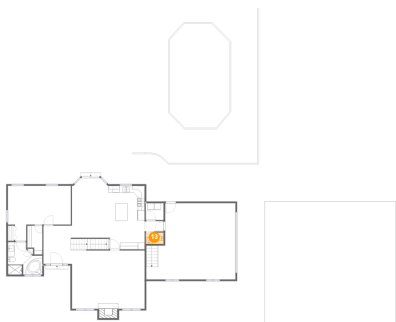
12 Floor 2 - Courtyard



Max Dimensions: 33'2" x 33'7"
Calculated Area: 483 sq. ft
Included: No

Heated: No
Finished: No
Enclosed: No
Contiguous: Yes
Permitted: No
Wet space: No
Addition: No
Conversion: No

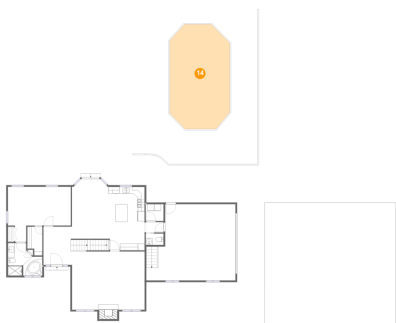
13 Floor 2 - WC



Max Dimensions: 5'3" x 3'4"
Calculated Area: 18 sq. ft
Included: Yes

Heated: Yes
Finished: Yes
Enclosed: Yes
Contiguous: Yes
Permitted: Yes
Wet space: No
Addition: No
Conversion: No

14 Floor 2 - Swimming Pool

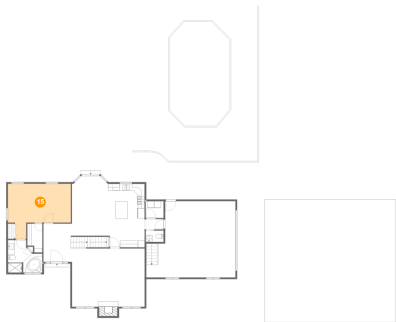


Max Dimensions: 17'10" x 30'11"
Calculated Area: 508 sq. ft
Included: No

Heated: No
Finished: No
Enclosed: No
Contiguous: Yes
Permitted: No
Wet space: No
Addition: No
Conversion: No

94 Troutman Road, Jefferson Township, Hermitage, Mercer
County, Pennsylvania, United States, 16148

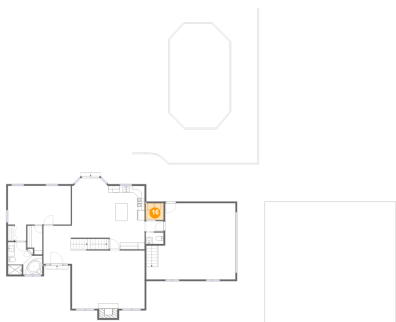
15 Floor 2 - Primary Bedroom



Max Dimensions: 18'8" x 16'4"
Calculated Area: 231 sq. ft
Included: Yes

Heated: Yes
Finished: Yes
Enclosed: Yes
Contiguous: Yes
Permitted: Yes
Wet space: No
Addition: No
Conversion: No

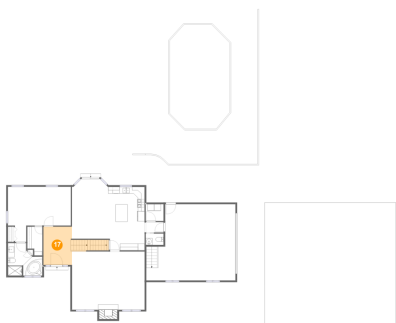
16 Floor 2 - Laundry



Max Dimensions: 5'3" x 5'0"
Calculated Area: 26 sq. ft
Included: Yes

Heated: Yes
Finished: Yes
Enclosed: Yes
Contiguous: Yes
Permitted: Yes
Wet space: No
Addition: No
Conversion: No

17 Floor 2 - Foyer

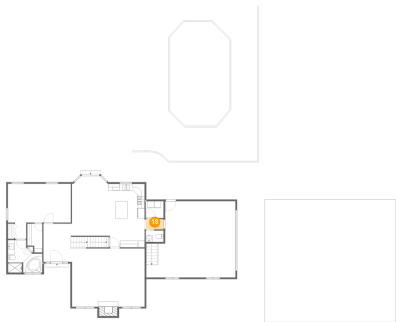


Max Dimensions: 8'6" x 11'4"
Calculated Area: 132 sq. ft
Included: Yes

Heated: Yes
Finished: Yes
Enclosed: Yes
Contiguous: Yes
Permitted: Yes
Wet space: No
Addition: No
Conversion: No

94 Troutman Road, Jefferson Township, Hermitage, Mercer
County, Pennsylvania, United States, 16148

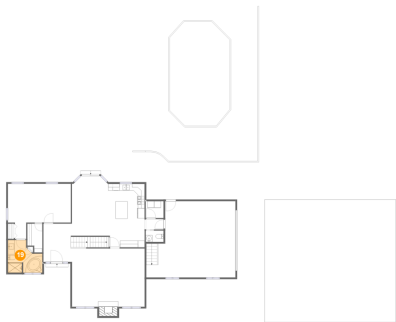
18 Floor 2 - Hall



Max Dimensions: 5'3" x 3'1"
Calculated Area: 16 sq. ft
Included: Yes

Heated: Yes
Finished: Yes
Enclosed: Yes
Contiguous: Yes
Permitted: Yes
Wet space: No
Addition: No
Conversion: No

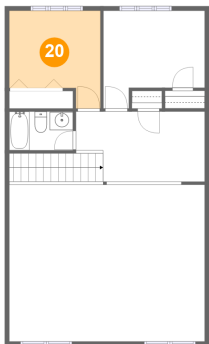
19 Floor 2 - Primary Bath



Max Dimensions: 10'3" x 9'8"
Calculated Area: 80 sq. ft
Included: Yes

Heated: Yes
Finished: Yes
Enclosed: Yes
Contiguous: Yes
Permitted: Yes
Wet space: Yes
Addition: No
Conversion: No

20 Floor 3 - Bedroom

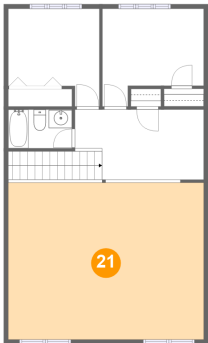


Max Dimensions: 10'1" x 10'9"
Calculated Area: 92 sq. ft
Included: Yes

Heated: Yes
Finished: Yes
Enclosed: Yes
Contiguous: Yes
Permitted: Yes
Wet space: No
Addition: No
Conversion: No

94 Troutman Road, Jefferson Township, Hermitage, Mercer
County, Pennsylvania, United States, 16148

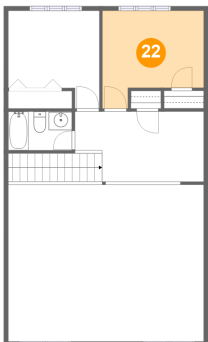
21 Floor 3 - Open To Below



Max Dimensions: 21'7" x 17'3"
Calculated Area: 372 sq. ft
Included: No

Heated: No
Finished: No
Enclosed: No
Contiguous: Yes
Permitted: No
Wet space: No
Addition: No
Conversion: No

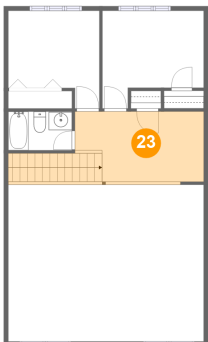
22 Floor 3 - Bedroom



Max Dimensions: 11'2" x 10'9"
Calculated Area: 101 sq. ft
Included: Yes

Heated: Yes
Finished: Yes
Enclosed: Yes
Contiguous: Yes
Permitted: Yes
Wet space: No
Addition: No
Conversion: No

23 Floor 3 - Hall

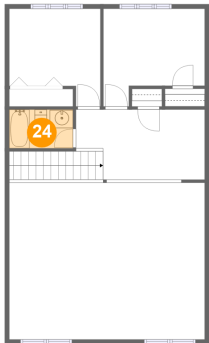


Max Dimensions: 14'2" x 7'8"
Calculated Area: 139 sq. ft
Included: Yes

Heated: Yes
Finished: Yes
Enclosed: Yes
Contiguous: Yes
Permitted: Yes
Wet space: No
Addition: No
Conversion: No

94 Troutman Road, Jefferson Township, Hermitage, Mercer
County, Pennsylvania, United States, 16148

24 Floor 3 - Bath



Max Dimensions: 7'0" x 4'3"
Calculated Area: 30 sq. ft
Included: Yes

Heated: Yes
Finished: Yes
Enclosed: Yes
Contiguous: Yes
Permitted: Yes
Wet space: Yes
Addition: No
Conversion: No