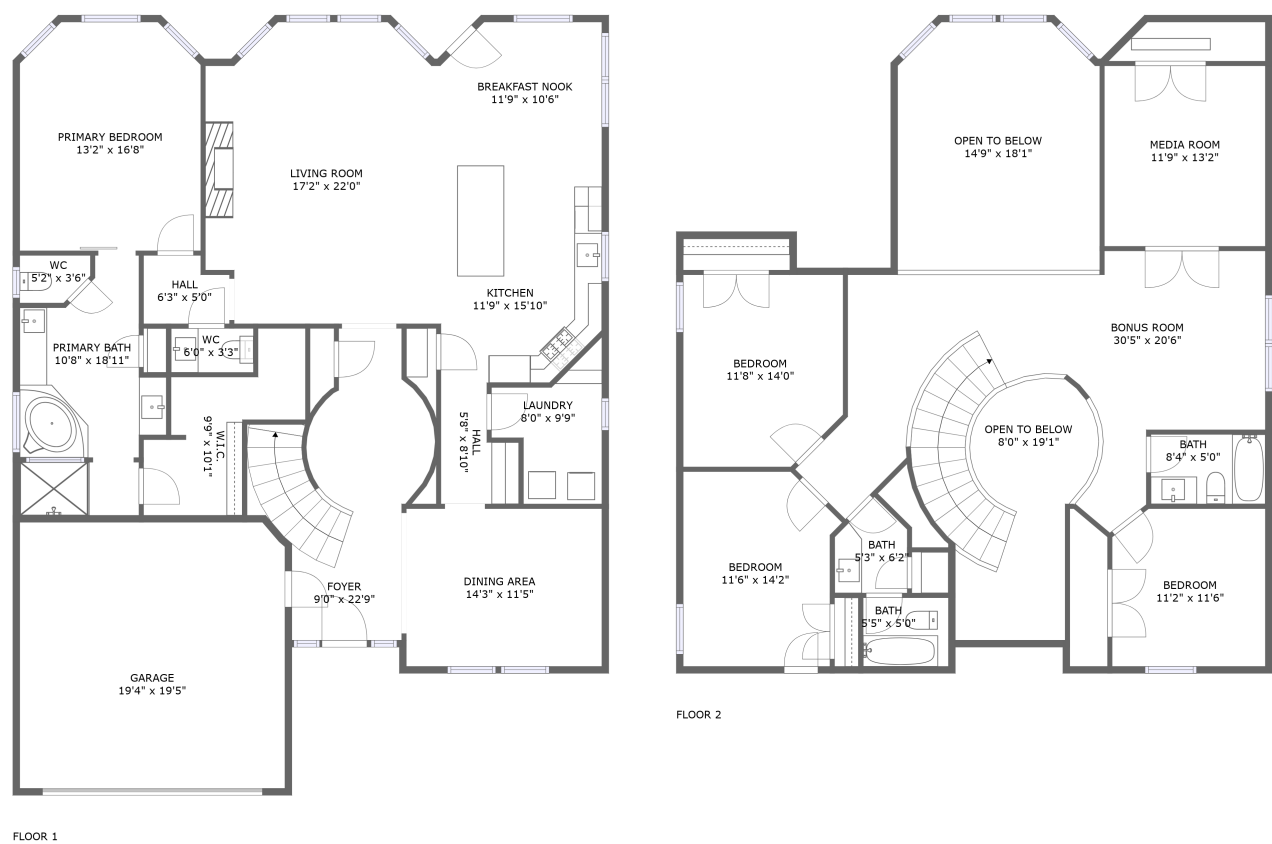




Home report


9431 Copper Cove Lane, Iowa Colony, Texas 77583, United States




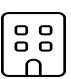
Property summary


**1** Garages


**4** Bedrooms

**3** Bathrooms

**1** Half baths

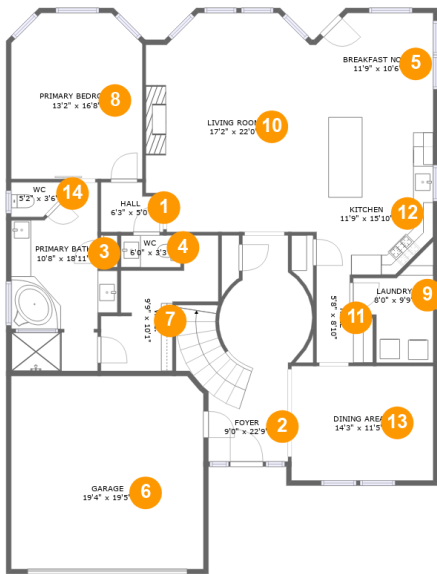
**2** Floors

**3,189** Gross living area sqft

**3,995** Total sqft

Home report

9431 Copper Cove Lane, Iowa Colony, Texas 77583, United States



Room dimensions

Floor 1

Total sqft: 2212 Living area: 1814

#		Dimensions	sqft	Counted as living area
1	Hall	6'3" x 5'0"	28 sq. ft	Yes
2	Foyer	9'0" x 22'9"	199 sq. ft	Yes
3	Primary Bath	10'8" x 18'11"	152 sq. ft	Yes
4	WC	6'0" x 3'3"	19 sq. ft	Yes
5	Breakfast Nook	11'9" x 10'6"	118 sq. ft	Yes
6	Garage	19'4" x 19'5"	373 sq. ft	No
7	W.I.C.	9'9" x 10'1"	90 sq. ft	Yes
8	Primary Bedroom	13'2" x 16'8"	210 sq. ft	Yes
9	Laundry	8'0" x 9'9"	64 sq. ft	Yes
10	Living Room	17'2" x 22'0"	350 sq. ft	Yes
11	Hall	5'8" x 8'10"	40 sq. ft	Yes

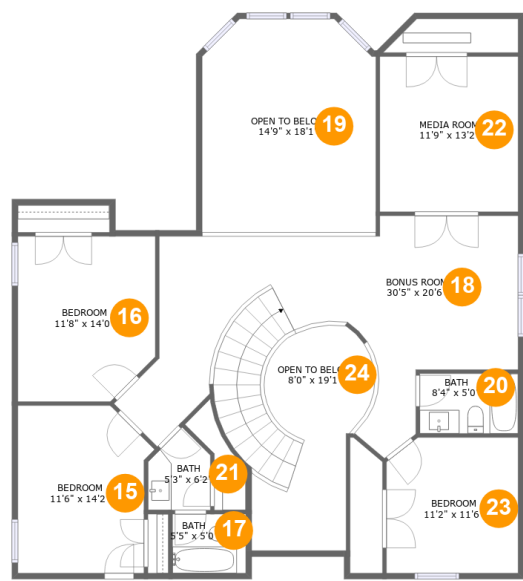
Home report

9431 Copper Cove Lane, Iowa Colony, Texas 77583, United States

#		Dimensions	sqft	Counted as living area
12	Kitchen	11'9" x 15'10"	178 sq. ft	Yes
13	Dining Area	14'3" x 11'5"	164 sq. ft	Yes
14	WC	5'2" x 3'6"	16 sq. ft	Yes

Home report

9431 Copper Cove Lane, Iowa Colony, Texas 77583, United States



Room dimensions

Floor 2 Total sqft: 1783 Living area: 1375

#		Dimensions	sqft	Counted as living area
15	Bedroom	11'6" x 14'2"	148 sq. ft	Yes
16	Bedroom	11'8" x 14'0"	156 sq. ft	Yes
17	Bath	5'5" x 5'0"	31 sq. ft	Yes
18	Bonus Room	30'5" x 20'6"	448 sq. ft	Yes
19	Open To Below	14'9" x 18'1"	255 sq. ft	No
20	Bath	8'4" x 5'0"	42 sq. ft	Yes
21	Bath	5'3" x 6'2"	30 sq. ft	Yes
22	Media Room	11'9" x 13'2"	154 sq. ft	Yes
23	Bedroom	11'2" x 11'6"	125 sq. ft	Yes
24	Open To Below	8'0" x 19'1"	133 sq. ft	No

1 Floor 1 - Hall



Dimensions: 6'3" x 5'0"
Area: 28 sq. ft
Counted as living area: Yes

Heated: Yes
Finished: Yes
Enclosed: Yes
Contiguous: Yes
Permitted: Yes
Wet space: No
Addition: No
Conversion: No

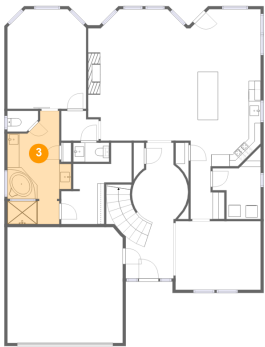
2 Floor 1 - Foyer



Dimensions: 9'0" x 22'9"
Area: 199 sq. ft
Counted as living area: Yes

Heated: Yes
Finished: Yes
Enclosed: Yes
Contiguous: Yes
Permitted: Yes
Wet space: No
Addition: No
Conversion: No

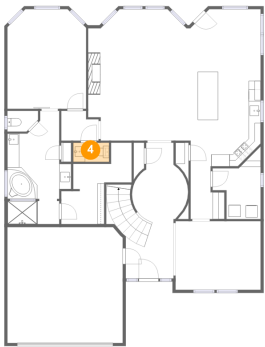
3 Floor 1 - Primary Bath



Dimensions: 10'8" x 18'11"
Area: 152 sq. ft
Counted as living area: Yes

Heated: Yes
Finished: Yes
Enclosed: Yes
Contiguous: Yes
Permitted: Yes
Wet space: Yes
Addition: No
Conversion: No

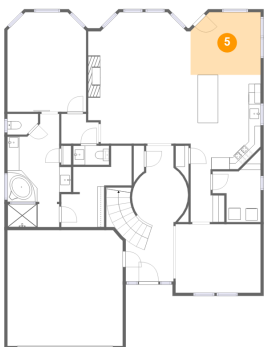
4 Floor 1 - WC



Dimensions: 6'0" x 3'3"
Area: 19 sq. ft
Counted as living area: Yes

Heated: Yes
Finished: Yes
Enclosed: Yes
Contiguous: Yes
Permitted: Yes
Wet space: Yes
Addition: No
Conversion: No

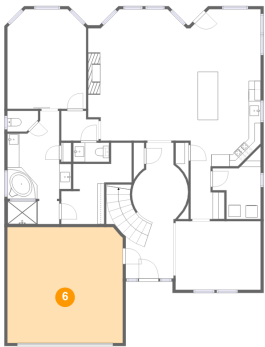
5 Floor 1 - Breakfast Nook



Dimensions: 11'9" x 10'6"
Area: 118 sq. ft
Counted as living area: Yes

Heated: Yes
Finished: Yes
Enclosed: Yes
Contiguous: Yes
Permitted: Yes
Wet space: No
Addition: No
Conversion: No

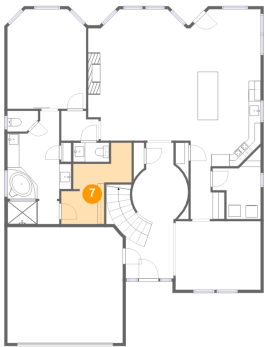
6 Floor 1 - Garage



Dimensions: 19'4" x 19'5"
Area: 373 sq. ft
Counted as living area: No

Heated: No
Finished: No
Enclosed: Yes
Contiguous: Yes
Permitted: Yes
Wet space: No
Addition: No
Conversion: No

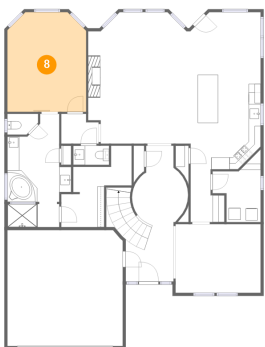
7 Floor 1 - W.I.C.



Dimensions: 9'9" x 10'1"
Area: 90 sq. ft
Counted as living area: Yes

Heated: Yes
Finished: Yes
Enclosed: Yes
Contiguous: Yes
Permitted: Yes
Wet space: No
Addition: No
Conversion: No

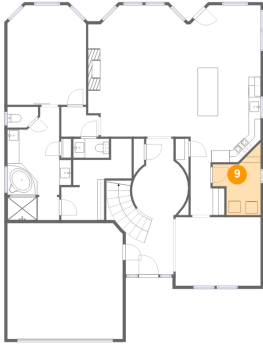
8 Floor 1 - Primary Bedroom



Dimensions: 13'2" x 16'8"
Area: 210 sq. ft
Counted as living area: Yes

Heated: Yes
Finished: Yes
Enclosed: Yes
Contiguous: Yes
Permitted: Yes
Wet space: No
Addition: No
Conversion: No

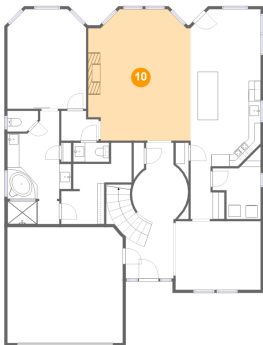
9 Floor 1 - Laundry



Dimensions: 8'0" x 9'9"
Area: 64 sq. ft
Counted as living area: Yes

Heated: Yes
Finished: Yes
Enclosed: Yes
Contiguous: Yes
Permitted: Yes
Wet space: No
Addition: No
Conversion: No

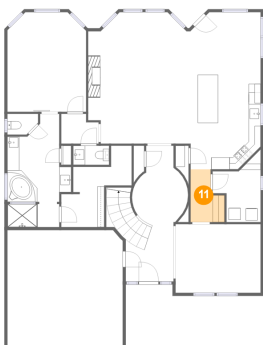
10 Floor 1 - Living Room



Dimensions: 17'2" x 22'0"
Area: 350 sq. ft
Counted as living area: Yes

Heated: Yes
Finished: Yes
Enclosed: Yes
Contiguous: Yes
Permitted: Yes
Wet space: No
Addition: No
Conversion: No

11 Floor 1 - Hall



Dimensions: 5'8" x 8'10"
Area: 40 sq. ft
Counted as living area: Yes

Heated: Yes
Finished: Yes
Enclosed: Yes
Contiguous: Yes
Permitted: Yes
Wet space: No
Addition: No
Conversion: No

9431 Copper Cove Lane, Iowa Colony, Texas 77583, United States

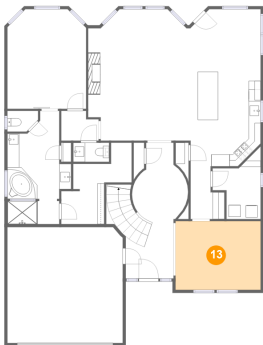
12 Floor 1 - Kitchen



Dimensions: 11'9" x 15'10"
Area: 178 sq. ft
Counted as living area: Yes

Heated: Yes
Finished: Yes
Enclosed: Yes
Contiguous: Yes
Permitted: Yes
Wet space: No
Addition: No
Conversion: No

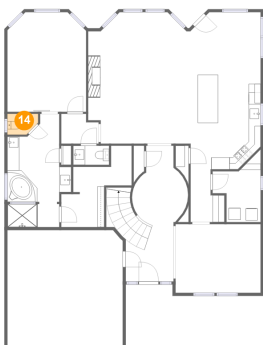
13 Floor 1 - Dining Area



Dimensions: 14'3" x 11'5"
Area: 164 sq. ft
Counted as living area: Yes

Heated: Yes
Finished: Yes
Enclosed: Yes
Contiguous: Yes
Permitted: Yes
Wet space: No
Addition: No
Conversion: No

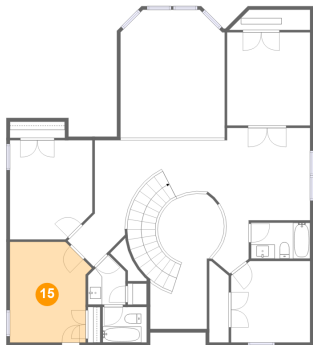
14 Floor 1 - WC



Dimensions: 5'2" x 3'6"
Area: 16 sq. ft
Counted as living area: Yes

Heated: Yes
Finished: Yes
Enclosed: Yes
Contiguous: Yes
Permitted: Yes
Wet space: Yes
Addition: No
Conversion: No

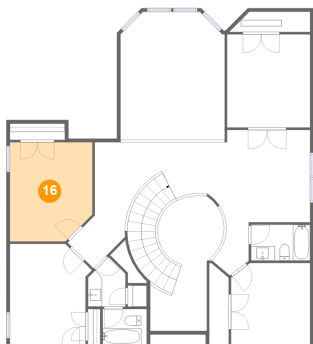
15 Floor 2 - Bedroom



Dimensions: 11'6" x 14'2"
Area: 148 sq. ft
Counted as living area: Yes

Heated: Yes
Finished: Yes
Enclosed: Yes
Contiguous: Yes
Permitted: Yes
Wet space: No
Addition: No
Conversion: No

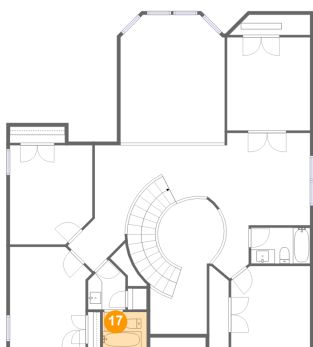
16 Floor 2 - Bedroom



Dimensions: 11'8" x 14'0"
Area: 156 sq. ft
Counted as living area: Yes

Heated: Yes
Finished: Yes
Enclosed: Yes
Contiguous: Yes
Permitted: Yes
Wet space: No
Addition: No
Conversion: No

17 Floor 2 - Bath

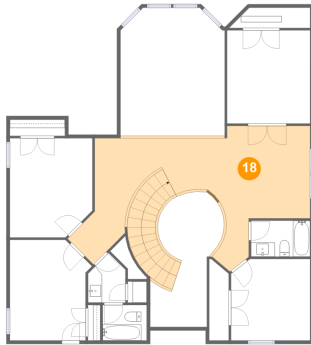


Dimensions: 5'5" x 5'0"
Area: 31 sq. ft
Counted as living area: Yes

Heated: Yes
Finished: Yes
Enclosed: Yes
Contiguous: Yes
Permitted: Yes
Wet space: Yes
Addition: No
Conversion: No

9431 Copper Cove Lane, Iowa Colony, Texas 77583, United States

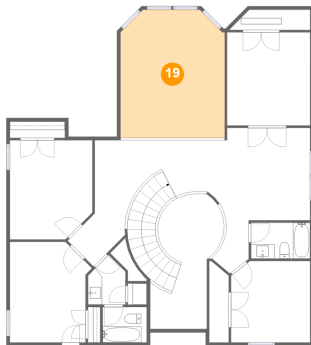
18 Floor 2 - Bonus Room



Dimensions: 30'5" x 20'6"
Area: 448 sq. ft
Counted as living area: Yes

Heated: Yes
Finished: Yes
Enclosed: Yes
Contiguous: Yes
Permitted: Yes
Wet space: No
Addition: No
Conversion: No

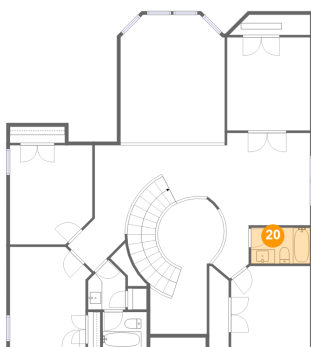
19 Floor 2 - Open To Below



Dimensions: 14'9" x 18'1"
Area: 255 sq. ft
Counted as living area: No

Heated: No
Finished: No
Enclosed: No
Contiguous: Yes
Permitted: No
Wet space: No
Addition: No
Conversion: No

20 Floor 2 - Bath

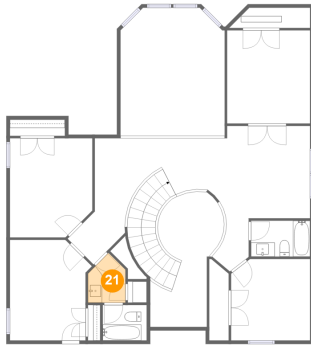


Dimensions: 8'4" x 5'0"
Area: 42 sq. ft
Counted as living area: Yes

Heated: Yes
Finished: Yes
Enclosed: Yes
Contiguous: Yes
Permitted: Yes
Wet space: Yes
Addition: No
Conversion: No

9431 Copper Cove Lane, Iowa Colony, Texas 77583, United States

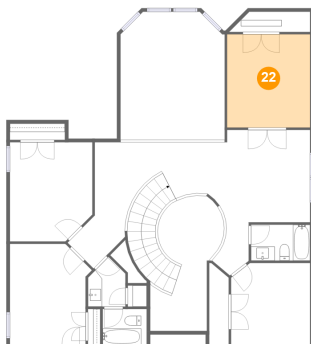
21 Floor 2 - Bath



Dimensions: 5'3" x 6'2"
Area: 30 sq. ft
Counted as living area: Yes

Heated: Yes
Finished: Yes
Enclosed: Yes
Contiguous: Yes
Permitted: Yes
Wet space: Yes
Addition: No
Conversion: No

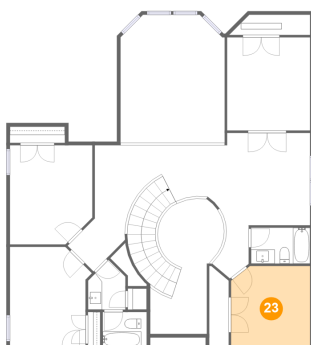
22 Floor 2 - Media Room



Dimensions: 11'9" x 13'2"
Area: 154 sq. ft
Counted as living area: Yes

Heated: Yes
Finished: Yes
Enclosed: Yes
Contiguous: Yes
Permitted: Yes
Wet space: No
Addition: No
Conversion: No

23 Floor 2 - Bedroom

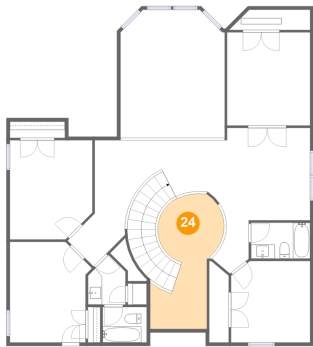


Dimensions: 11'2" x 11'6"
Area: 125 sq. ft
Counted as living area: Yes

Heated: Yes
Finished: Yes
Enclosed: Yes
Contiguous: Yes
Permitted: Yes
Wet space: No
Addition: No
Conversion: No

9431 Copper Cove Lane, Iowa Colony, Texas 77583, United States

24 Floor 2 - Open To Below



Dimensions: 8'0" x 19'1"
Area: 133 sq. ft
Counted as living area: No

Heated: No
Finished: No
Enclosed: No
Contiguous: Yes
Permitted: No
Wet space: No
Addition: No
Conversion: No