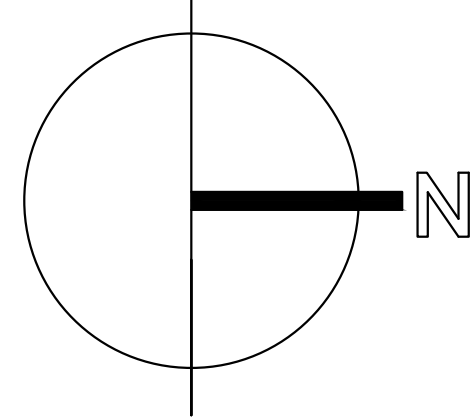
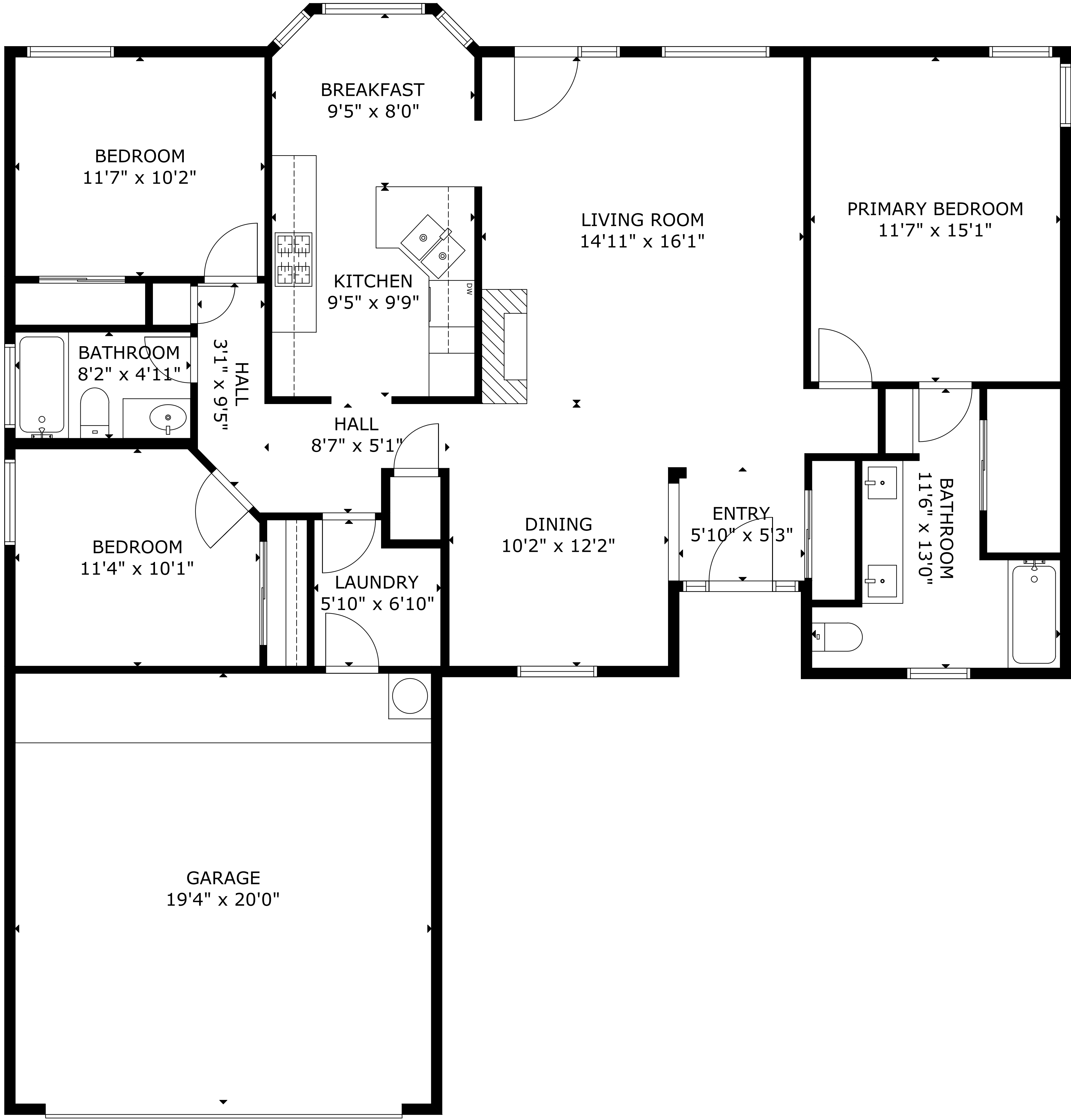


9 Poplar Pl, Los Luna's NM



GROSS EXTERNAL AREA

TOTAL: 1,444 sq ft

FLOOR 1: 1,444 sq ft

EXCLUDED AREAS: GARAGE: 386 sq ft

SIZE AND DIMENSIONS ARE APPROXIMATE, ACTUAL MAY VARY