


Home report

1150 Drewrys Hill Road, Stewartsville, Vinton, Bedford County, Virginia, United States, 24179



Property summary

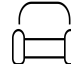
 **0** Garages

 **5** Bedrooms

 **3** Bathrooms

 **0** Half baths

 **2** Floors

 **3,626** Gross living area sqft

 **6,144** Total sqft

Home report

1150 Drewrys Hill Road, Stewartsville, Vinton, Bedford County, Virginia, United States, 24179



Room dimensions

Floor 1

Total sqft: 4881 Living area: 2369

#		Dimensions	sqft	Counted as living area
1	Primary Bedroom	23'1" x 18'11"	353 sq. ft	Yes
2	Hall	7'8" x 7'7"	58 sq. ft	Yes
3	Hall	4'4" x 8'6"	37 sq. ft	Yes
4	Patio	58'2" x 27'11"	1443 sq. ft	No
5	Primary Bath	12'3" x 9'9"	118 sq. ft	Yes
6	Dining Room	15'0" x 15'4"	230 sq. ft	Yes
7	Porch	27'11" x 8'2"	229 sq. ft	No
8	Covered Patio	12'8" x 9'11"	126 sq. ft	No
9	Swimming Pool	33'4" x 16'5"	496 sq. ft	No
10	Bath	8'0" x 11'9"	94 sq. ft	Yes
11	Laundry	8'3" x 6'2"	51 sq. ft	Yes

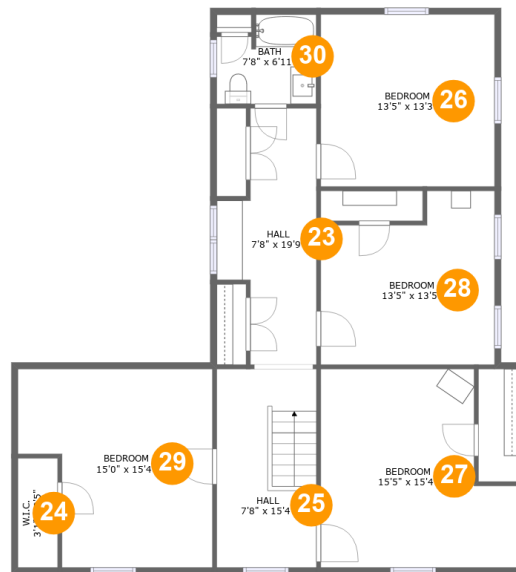
Home report

**1150 Drewrys Hill Road, Stewartsville, Vinton, Bedford County,
Virginia, United States, 24179**

#		Dimensions	sqft	Counted as living area
12	WC	9'0" x 8'9"	45 sq. ft	No
13	Deck	59'5" x 9'5"	500 sq. ft	No
14	Pantry	8'2" x 6'11"	56 sq. ft	Yes
15	Family Room	21'1" x 16'3"	344 sq. ft	Yes
16	Deck	10'0" x 12'4"	111 sq. ft	No
17	Kitchen	13'5" x 26'10"	354 sq. ft	Yes
18	Deck	21'1" x 18'4"	268 sq. ft	No
19	Covered Deck	17'9" x 15'2"	269 sq. ft	No
20	Foyer	7'8" x 15'4"	115 sq. ft	Yes
21	Living Room	15'5" x 15'4"	236 sq. ft	Yes
22	W.I.C.	15'3" x 5'11"	90 sq. ft	Yes

Home report

1150 Drewrys Hill Road, Stewartsville, Vinton, Bedford County, Virginia, United States, 24179



Room dimensions

Floor 2

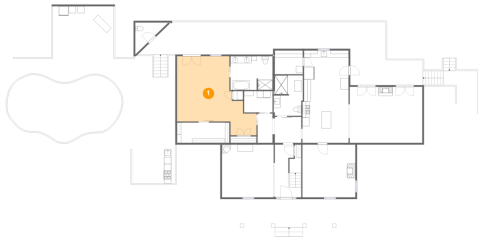
Total sqft: 1263 Living area: 1257

#		Dimensions	sqft	Counted as living area
23	Hall	7'8" x 19'9"	117 sq. ft	Yes
24	W.I.C.	3'1" x 8'5"	26 sq. ft	Yes
25	Hall	7'8" x 15'4"	118 sq. ft	Yes
26	Bedroom	13'5" x 13'3"	178 sq. ft	Yes
27	Bedroom	15'5" x 15'4"	204 sq. ft	Yes
28	Bedroom	13'5" x 13'5"	158 sq. ft	Yes
29	Bedroom	15'0" x 15'4"	200 sq. ft	Yes
30	Bath	7'8" x 6'11"	48 sq. ft	Yes

Home report

1150 Drewrys Hill Road, Stewartsville, Vinton, Bedford County,
Virginia, United States, 24179

1 Floor 1 - Primary Bedroom



Dimensions: 23'1" x 18'11"
Area: 353 sq. ft
Counted as living area: Yes

Heated: Yes
Finished: Yes
Enclosed: Yes
Contiguous: Yes
Permitted: Yes
Wet space: No
Addition: No
Conversion: No

2 Floor 1 - Hall



Dimensions: 7'8" x 7'7"
Area: 58 sq. ft
Counted as living area: Yes

Heated: Yes
Finished: Yes
Enclosed: Yes
Contiguous: Yes
Permitted: Yes
Wet space: No
Addition: No
Conversion: No

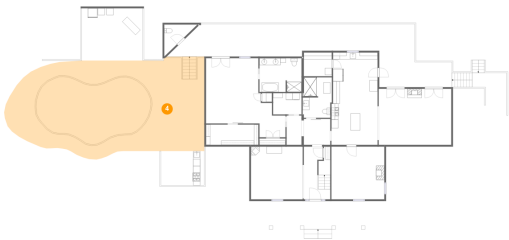
3 Floor 1 - Hall



Dimensions: 4'4" x 8'6"
Area: 37 sq. ft
Counted as living area: Yes

Heated: Yes
Finished: Yes
Enclosed: Yes
Contiguous: Yes
Permitted: Yes
Wet space: No
Addition: No
Conversion: No

4 Floor 1 - Patio



Dimensions: 58'2" x 27'11"
Area: 1443 sq. ft
Counted as living area: No

Heated: No
Finished: Yes
Enclosed: No
Contiguous: Yes
Permitted: Yes
Wet space: No
Addition: No
Conversion: No

5 Floor 1 - Primary Bath



Dimensions: 12'3" x 9'9"
Area: 118 sq. ft
Counted as living area: Yes

Heated: Yes
Finished: Yes
Enclosed: Yes
Contiguous: Yes
Permitted: Yes
Wet space: Yes
Addition: No
Conversion: No

1150 Drewrys Hill Road, Stewartsville, Vinton, Bedford County, Virginia, United States, 24179

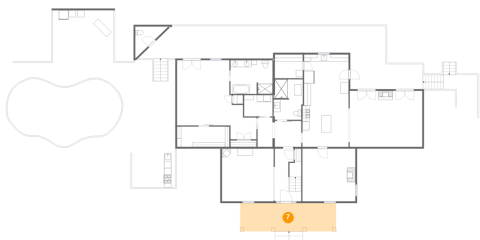
6 Floor 1 - Dining Room



Dimensions: 15'0" x 15'4"
Area: 230 sq. ft
Counted as living area: Yes

Heated: Yes
Finished: Yes
Enclosed: Yes
Contiguous: Yes
Permitted: Yes
Wet space: No
Addition: No
Conversion: No

7 Floor 1 - Porch



Dimensions: 27'11" x 8'2"
Area: 229 sq. ft
Counted as living area: No

Heated: No
Finished: Yes
Enclosed: No
Contiguous: Yes
Permitted: Yes
Wet space: No
Addition: No
Conversion: No

8 Floor 1 - Covered Patio



Dimensions: 12'8" x 9'11"
Area: 126 sq. ft
Counted as living area: No

Heated: No
Finished: Yes
Enclosed: No
Contiguous: Yes
Permitted: Yes
Wet space: No
Addition: No
Conversion: No

1150 Drewrys Hill Road, Stewartsville, Vinton, Bedford County, Virginia, United States, 24179

9 Floor 1 - Swimming Pool



Dimensions: 33'4" x 16'5"
Area: 496 sq. ft
Counted as living area: No

Heated: No
Finished: No
Enclosed: No
Contiguous: Yes
Permitted: No
Wet space: No
Addition: No
Conversion: No

10 Floor 1 - Bath



Dimensions: 8'0" x 11'9"
Area: 94 sq. ft
Counted as living area: Yes

Heated: Yes
Finished: Yes
Enclosed: Yes
Contiguous: Yes
Permitted: Yes
Wet space: Yes
Addition: No
Conversion: No

11 Floor 1 - Laundry



Dimensions: 8'3" x 6'2"
Area: 51 sq. ft
Counted as living area: Yes

Heated: Yes
Finished: Yes
Enclosed: Yes
Contiguous: Yes
Permitted: Yes
Wet space: No
Addition: No
Conversion: No

12 Floor 1 - WC



Dimensions: 9'0" x 8'9"
Area: 45 sq. ft
Counted as living area: No

Heated: Yes
Finished: No
Enclosed: Yes
Contiguous: Yes
Permitted: Yes
Wet space: No
Addition: No
Conversion: No

13 Floor 1 - Deck



Dimensions: 59'5" x 9'5"
Area: 500 sq. ft
Counted as living area: No

Heated: No
Finished: Yes
Enclosed: No
Contiguous: Yes
Permitted: Yes
Wet space: No
Addition: No
Conversion: No

14 Floor 1 - Pantry



Dimensions: 8'2" x 6'11"
Area: 56 sq. ft
Counted as living area: Yes

Heated: Yes
Finished: Yes
Enclosed: Yes
Contiguous: Yes
Permitted: Yes
Wet space: No
Addition: No
Conversion: No

15 Floor 1 - Family Room



Dimensions: 21'1" x 16'3"
Area: 344 sq. ft
Counted as living area: Yes

Heated: Yes
Finished: Yes
Enclosed: Yes
Contiguous: Yes
Permitted: Yes
Wet space: No
Addition: No
Conversion: No

16 Floor 1 - Deck



Dimensions: 10'0" x 12'4"
Area: 111 sq. ft
Counted as living area: No

Heated: No
Finished: Yes
Enclosed: No
Contiguous: Yes
Permitted: Yes
Wet space: No
Addition: No
Conversion: No

17 Floor 1 - Kitchen



Dimensions: 13'5" x 26'10"
Area: 354 sq. ft
Counted as living area: Yes

Heated: Yes
Finished: Yes
Enclosed: Yes
Contiguous: Yes
Permitted: Yes
Wet space: No
Addition: No
Conversion: No

1150 Drewrys Hill Road, Stewartsville, Vinton, Bedford County, Virginia, United States, 24179

18 Floor 1 - Deck



Dimensions: 21'1" x 18'4"
Area: 268 sq. ft
Counted as living area: No

Heated: No
Finished: Yes
Enclosed: No
Contiguous: Yes
Permitted: Yes
Wet space: No
Addition: No
Conversion: No

19 Floor 1 - Covered Deck



Dimensions: 17'9" x 15'2"
Area: 269 sq. ft
Counted as living area: No

Heated: No
Finished: Yes
Enclosed: No
Contiguous: Yes
Permitted: Yes
Wet space: No
Addition: No
Conversion: No

20 Floor 1 - Foyer



Dimensions: 7'8" x 15'4"
Area: 115 sq. ft
Counted as living area: Yes

Heated: Yes
Finished: Yes
Enclosed: Yes
Contiguous: Yes
Permitted: Yes
Wet space: No
Addition: No
Conversion: No

1150 Drewrys Hill Road, Stewartsville, Vinton, Bedford County, Virginia, United States, 24179

21 Floor 1 - Living Room



Dimensions: 15'5" x 15'4"
Area: 236 sq. ft
Counted as living area: Yes

Heated: Yes
Finished: Yes
Enclosed: Yes
Contiguous: Yes
Permitted: Yes
Wet space: No
Addition: No
Conversion: No

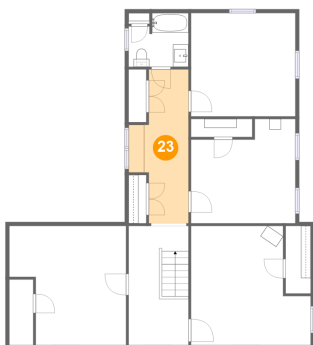
22 Floor 1 - W.I.C.



Dimensions: 15'3" x 5'11"
Area: 90 sq. ft
Counted as living area: Yes

Heated: Yes
Finished: Yes
Enclosed: Yes
Contiguous: Yes
Permitted: Yes
Wet space: No
Addition: No
Conversion: No

23 Floor 2 - Hall

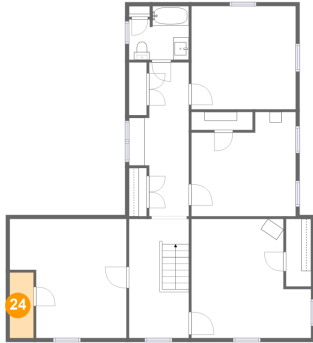


Dimensions: 7'8" x 19'9"
Area: 117 sq. ft
Counted as living area: Yes

Heated: Yes
Finished: Yes
Enclosed: Yes
Contiguous: Yes
Permitted: Yes
Wet space: No
Addition: No
Conversion: No

1150 Drewrys Hill Road, Stewartsville, Vinton, Bedford County, Virginia, United States, 24179

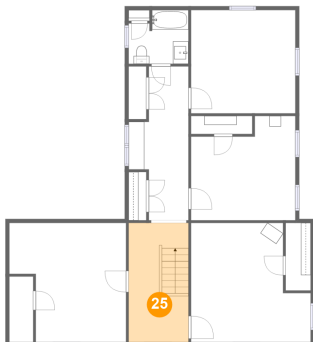
24 Floor 2 - W.I.C.



Dimensions: 3'1" x 8'5"
Area: 26 sq. ft
Counted as living area: Yes

Heated: Yes
Finished: Yes
Enclosed: Yes
Contiguous: Yes
Permitted: Yes
Wet space: No
Addition: No
Conversion: No

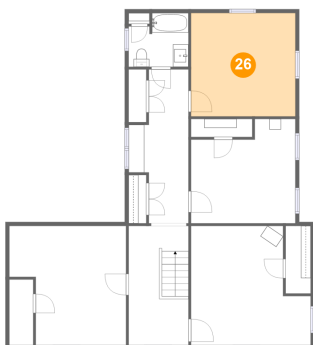
25 Floor 2 - Hall



Dimensions: 7'8" x 15'4"
Area: 118 sq. ft
Counted as living area: Yes

Heated: Yes
Finished: Yes
Enclosed: Yes
Contiguous: Yes
Permitted: Yes
Wet space: No
Addition: No
Conversion: No

26 Floor 2 - Bedroom

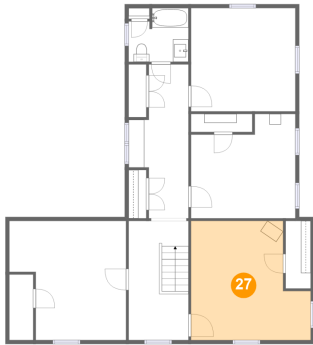


Dimensions: 13'5" x 13'3"
Area: 178 sq. ft
Counted as living area: Yes

Heated: Yes
Finished: Yes
Enclosed: Yes
Contiguous: Yes
Permitted: Yes
Wet space: No
Addition: No
Conversion: No

1150 Drewrys Hill Road, Stewartsville, Vinton, Bedford County, Virginia, United States, 24179

27 Floor 2 - Bedroom



Dimensions: 15'5" x 15'4"
Area: 204 sq. ft
Counted as living area: Yes

Heated: Yes
Finished: Yes
Enclosed: Yes
Contiguous: Yes
Permitted: Yes
Wet space: No
Addition: No
Conversion: No

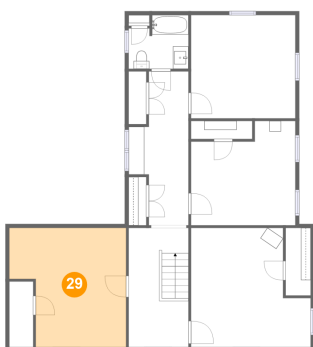
28 Floor 2 - Bedroom



Dimensions: 13'5" x 13'5"
Area: 158 sq. ft
Counted as living area: Yes

Heated: Yes
Finished: Yes
Enclosed: Yes
Contiguous: Yes
Permitted: Yes
Wet space: No
Addition: No
Conversion: No

29 Floor 2 - Bedroom



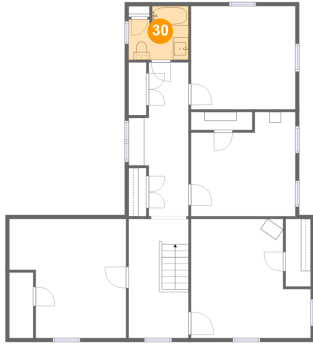
Dimensions: 15'0" x 15'4"
Area: 200 sq. ft
Counted as living area: Yes

Heated: Yes
Finished: Yes
Enclosed: Yes
Contiguous: Yes
Permitted: Yes
Wet space: No
Addition: No
Conversion: No

Home report

1150 Drewrys Hill Road, Stewartsville, Vinton, Bedford County,
Virginia, United States, 24179

30 Floor 2 - Bath



Dimensions: 7'8" x 6'11"
Area: 48 sq. ft
Counted as living area: Yes

Heated: Yes
Finished: Yes
Enclosed: Yes
Contiguous: Yes
Permitted: Yes
Wet space: Yes
Addition: No
Conversion: No