

Home report

6319 Midtowne Lane Northwest, Huntsville, Madison County, Alabama, United States, 35806



Total Area: 2202 sq. ft

Floor 1: 1324 sq. ft, Floor 2: 878 sq. ft

Excluded: Garage 440 sq. ft, Patio 802 sq. ft, Carport 241 sq. ft, Low ceiling 9 sq. ft, Walls: 201 sq. ft

Property summary

 **2** Floors

 **4** Bedrooms

 **2** Bathrooms

Home report

**6319 Midtowne Lane Northwest, Huntsville, Madison County,
Alabama, United States, 35806**

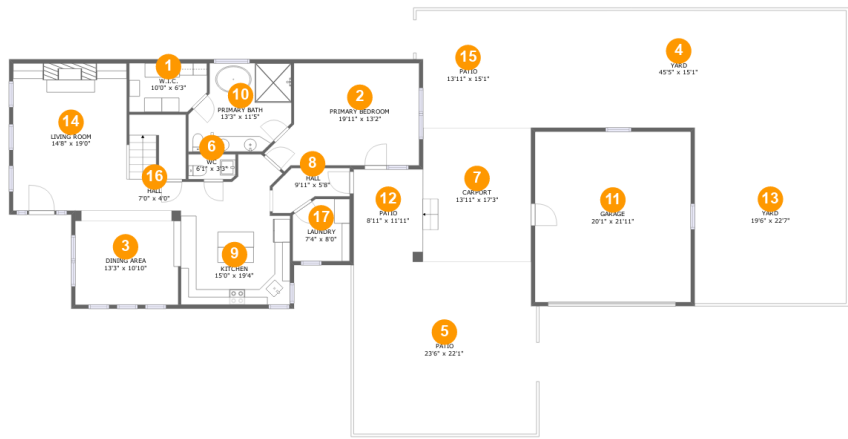


1
Half baths



1
Garages

6319 Midtowne Lane Northwest, Huntsville, Madison County, Alabama, United States, 35806



Room dimensions

Floor 1 Total:1324sqft Excluded: 1483sqft

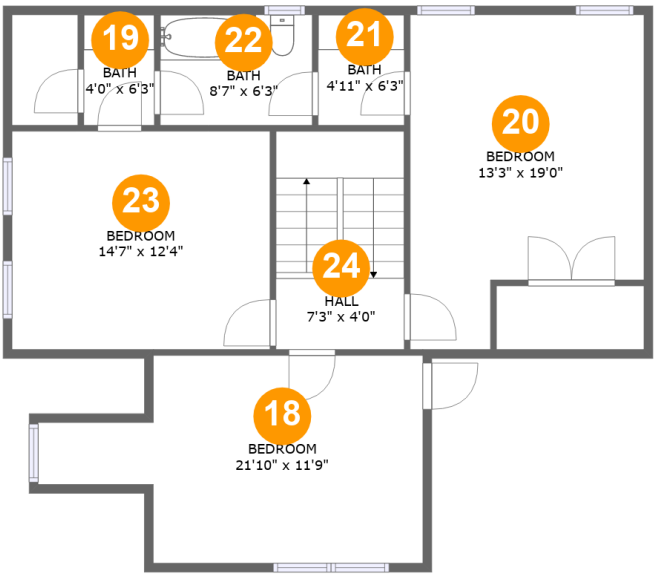
#		Max Dimensions	sqft	Included
1	W.I.C.	10'0" x 6'3"	59 sq. ft	Yes
2	Primary Bedroom	19'11" x 13'2"	224 sq. ft	Yes
3	Dining Area	13'3" x 10'10"	140 sq. ft	Yes
4	Yard	45'5" x 15'1"	649 sq. ft	No
5	Patio	23'6" x 22'1"	517 sq. ft	No
6	WC	6'1" x 3'3"	19 sq. ft	Yes
7	Carport	13'11" x 17'3"	241 sq. ft	No
8	Hall	9'11" x 5'8"	41 sq. ft	Yes
9	Kitchen	15'0" x 19'4"	233 sq. ft	Yes
10	Primary Bath	13'3" x 11'5"	130 sq. ft	Yes
11	Garage	20'1" x 21'11"	440 sq. ft	No

Home report

6319 Midtowne Lane Northwest, Huntsville, Madison County, Alabama, United States, 35806

#		Max Dimensions	sqft	Included
12	Patio	8'11" x 11'11"	106 sq. ft	No
13	Yard	19'6" x 22'7"	441 sq. ft	No
14	Living Room	14'8" x 19'0"	277 sq. ft	Yes
15	Patio	13'11" x 15'1"	179 sq. ft	No
16	Hall	7'0" x 4'0"	87 sq. ft	Yes
17	Laundry	7'4" x 8'0"	56 sq. ft	Yes

6319 Midtowne Lane Northwest, Huntsville, Madison County, Alabama, United States, 35806



Room dimensions

Floor 2 Total:878sqft Excluded: 9sqft

#		Max Dimensions	sqft	Included
18	Bedroom	21'10" x 11'9"	193 sq. ft	Yes
19	Bath	4'0" x 6'3"	25 sq. ft	Yes
20	Bedroom	13'3" x 19'0"	217 sq. ft	Yes
21	Bath	4'11" x 6'3"	31 sq. ft	Yes
22	Bath	8'7" x 6'3"	53 sq. ft	Yes
23	Bedroom	14'7" x 12'4"	181 sq. ft	Yes
24	Hall	7'3" x 4'0"	90 sq. ft	Yes

6319 Midtowne Lane Northwest, Huntsville, Madison County, Alabama, United States, 35806

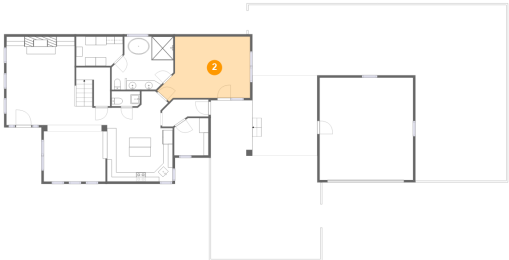
1 Floor 1 - W.I.C.



Max Dimensions: 10'0" x 6'3"
Calculated Area: 59 sq. ft
Included: Yes

Heated: Yes
Finished: Yes
Enclosed: Yes
Contiguous: Yes
Permitted: Yes
Wet space: No
Addition: No
Conversion: No

2 Floor 1 - Primary Bedroom



Max Dimensions: 19'11" x 13'2"
Calculated Area: 224 sq. ft
Included: Yes

Heated: Yes
Finished: Yes
Enclosed: Yes
Contiguous: Yes
Permitted: Yes
Wet space: No
Addition: No
Conversion: No

6319 Midtowne Lane Northwest, Huntsville, Madison County, Alabama, United States, 35806

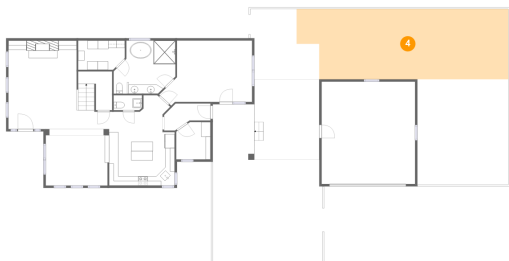
3 Floor 1 - Dining Area



Max Dimensions: 13'3" x 10'10"
Calculated Area: 140 sq. ft
Included: Yes

Heated: Yes
Finished: Yes
Enclosed: Yes
Contiguous: Yes
Permitted: Yes
Wet space: No
Addition: No
Conversion: No

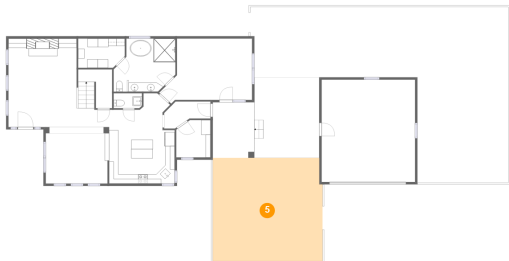
4 Floor 1 - Yard



Max Dimensions: 45'5" x 15'1"
Calculated Area: 649 sq. ft
Included: No

Heated: No
Finished: No
Enclosed: No
Contiguous: Yes
Permitted: No
Wet space: No
Addition: No
Conversion: No

5 Floor 1 - Patio



Max Dimensions: 23'6" x 22'1"
Calculated Area: 517 sq. ft
Included: No

Heated: No
Finished: Yes
Enclosed: No
Contiguous: Yes
Permitted: Yes
Wet space: No
Addition: No
Conversion: No

6319 Midtowne Lane Northwest, Huntsville, Madison County, Alabama, United States, 35806

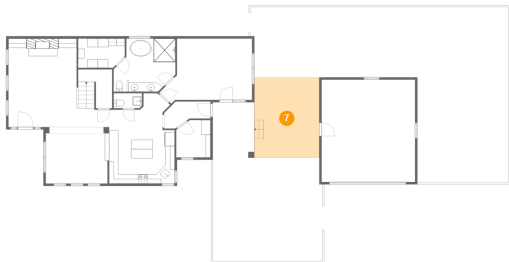
6 Floor 1 - WC



Max Dimensions: 6'1" x 3'3"
Calculated Area: 19 sq. ft
Included: Yes

Heated: Yes
Finished: Yes
Enclosed: Yes
Contiguous: Yes
Permitted: Yes
Wet space: Yes
Addition: No
Conversion: No

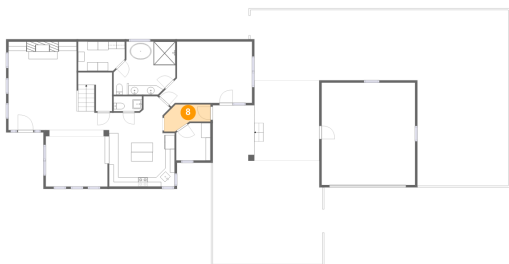
7 Floor 1 - Carport



Max Dimensions: 13'11" x 17'3"
Calculated Area: 241 sq. ft
Included: No

Heated: No
Finished: Yes
Enclosed: No
Contiguous: Yes
Permitted: Yes
Wet space: No
Addition: No
Conversion: No

8 Floor 1 - Hall

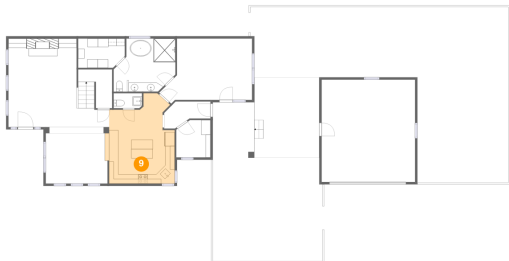


Max Dimensions: 9'11" x 5'8"
Calculated Area: 41 sq. ft
Included: Yes

Heated: Yes
Finished: Yes
Enclosed: Yes
Contiguous: Yes
Permitted: Yes
Wet space: No
Addition: No
Conversion: No

6319 Midtowne Lane Northwest, Huntsville, Madison County, Alabama, United States, 35806

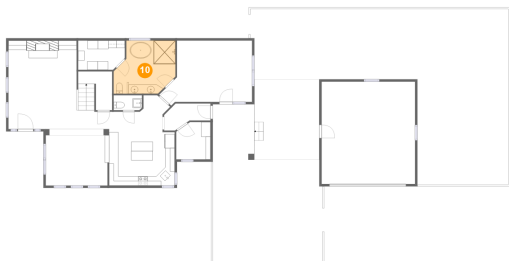
9 Floor 1 - Kitchen



Max Dimensions: 15'0" x 19'4"
Calculated Area: 233 sq. ft
Included: Yes

Heated: Yes
Finished: Yes
Enclosed: Yes
Contiguous: Yes
Permitted: Yes
Wet space: No
Addition: No
Conversion: No

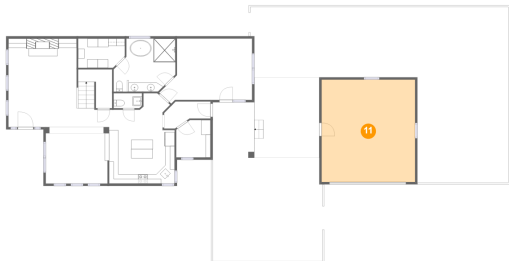
10 Floor 1 - Primary Bath



Max Dimensions: 13'3" x 11'5"
Calculated Area: 130 sq. ft
Included: Yes

Heated: Yes
Finished: Yes
Enclosed: Yes
Contiguous: Yes
Permitted: Yes
Wet space: Yes
Addition: No
Conversion: No

11 Floor 1 - Garage

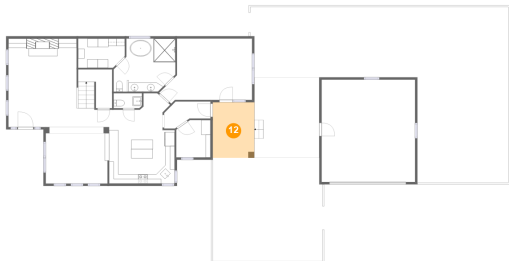


Max Dimensions: 20'1" x 21'11"
Calculated Area: 440 sq. ft
Included: No

Heated: No
Finished: No
Enclosed: Yes
Contiguous: Yes
Permitted: Yes
Wet space: No
Addition: No
Conversion: No

6319 Midtowne Lane Northwest, Huntsville, Madison County, Alabama, United States, 35806

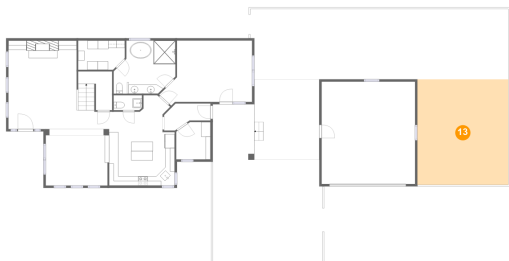
12 Floor 1 - Patio



Max Dimensions: 8'11" x 11'11"
Calculated Area: 106 sq. ft
Included: No

Heated: No
Finished: Yes
Enclosed: No
Contiguous: Yes
Permitted: Yes
Wet space: No
Addition: No
Conversion: No

13 Floor 1 - Yard



Max Dimensions: 19'6" x 22'7"
Calculated Area: 441 sq. ft
Included: No

Heated: No
Finished: No
Enclosed: No
Contiguous: Yes
Permitted: No
Wet space: No
Addition: No
Conversion: No

14 Floor 1 - Living Room



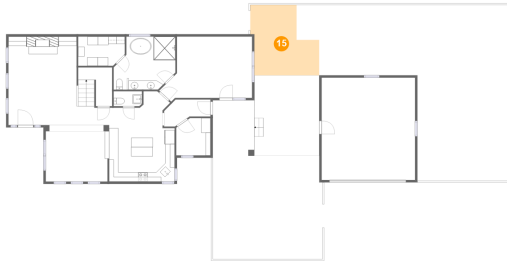
Max Dimensions: 14'8" x 19'0"
Calculated Area: 277 sq. ft
Included: Yes

Heated: Yes
Finished: Yes
Enclosed: Yes
Contiguous: Yes
Permitted: Yes
Wet space: No
Addition: No
Conversion: No

Home report

6319 Midtowne Lane Northwest, Huntsville, Madison County, Alabama, United States, 35806

15 Floor 1 - Patio



Max Dimensions: 13'11" x 15'1"
Calculated Area: 179 sq. ft
Included: No

Heated: No
Finished: Yes
Enclosed: No
Contiguous: Yes
Permitted: Yes
Wet space: No
Addition: No
Conversion: No

16 Floor 1 - Hall



Max Dimensions: 7'0" x 4'0"
Calculated Area: 87 sq. ft
Included: Yes

Heated: Yes
Finished: Yes
Enclosed: Yes
Contiguous: Yes
Permitted: Yes
Wet space: No
Addition: No
Conversion: No

17 Floor 1 - Laundry



Max Dimensions: 7'4" x 8'0"
Calculated Area: 56 sq. ft
Included: Yes

Heated: Yes
Finished: Yes
Enclosed: Yes
Contiguous: Yes
Permitted: Yes
Wet space: No
Addition: No
Conversion: No

6319 Midtowne Lane Northwest, Huntsville, Madison County, Alabama, United States, 35806

18 Floor 2 - Bedroom



Max Dimensions: 21'10" x 11'9"
Calculated Area: 193 sq. ft
Included: Yes

Heated: Yes
Finished: Yes
Enclosed: Yes
Contiguous: Yes
Permitted: Yes
Wet space: No
Addition: No
Conversion: No

19 Floor 2 - Bath



Max Dimensions: 4'0" x 6'3"
Calculated Area: 25 sq. ft
Included: Yes

Heated: Yes
Finished: Yes
Enclosed: Yes
Contiguous: Yes
Permitted: Yes
Wet space: Yes
Addition: No
Conversion: No

20 Floor 2 - Bedroom

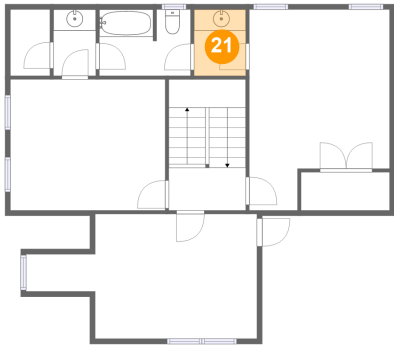


Max Dimensions: 13'3" x 19'0"
Calculated Area: 217 sq. ft
Included: Yes

Heated: Yes
Finished: Yes
Enclosed: Yes
Contiguous: Yes
Permitted: Yes
Wet space: No
Addition: No
Conversion: No

6319 Midtowne Lane Northwest, Huntsville, Madison County, Alabama, United States, 35806

21 Floor 2 - Bath



Max Dimensions: 4'11" x 6'3"
Calculated Area: 31 sq. ft
Included: Yes

Heated: Yes
Finished: Yes
Enclosed: Yes
Contiguous: Yes
Permitted: Yes
Wet space: Yes
Addition: No
Conversion: No

22 Floor 2 - Bath



Max Dimensions: 8'7" x 6'3"
Calculated Area: 53 sq. ft
Included: Yes

Heated: Yes
Finished: Yes
Enclosed: Yes
Contiguous: Yes
Permitted: Yes
Wet space: Yes
Addition: No
Conversion: No

23 Floor 2 - Bedroom



Max Dimensions: 14'7" x 12'4"
Calculated Area: 181 sq. ft
Included: Yes

Heated: Yes
Finished: Yes
Enclosed: Yes
Contiguous: Yes
Permitted: Yes
Wet space: No
Addition: No
Conversion: No

6319 Midtowne Lane Northwest, Huntsville, Madison County,
Alabama, United States, 35806

24 Floor 2 - Hall



Max Dimensions: 7'3" x 4'0"
Calculated Area: 90 sq. ft
Included: Yes

Heated: Yes
Finished: Yes
Enclosed: Yes
Contiguous: Yes
Permitted: Yes
Wet space: No
Addition: No
Conversion: No