

# 310 South 21st Street, Woodfort, Lebanon, Lebanon County, Pennsylvania, United States, 17042



## Property summary

 **1** Garages

 **7** Bedrooms

 **3** Bathrooms

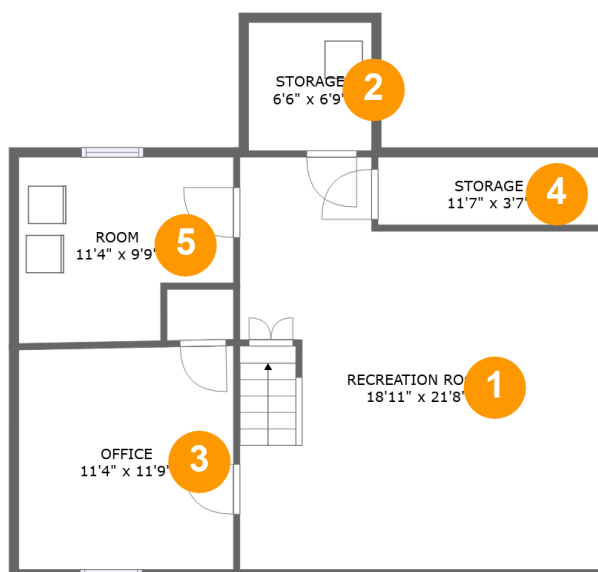
 **1** Half baths

 **6** Floors

 **5,025** Gross living area sqft

 **6,846** Total sqft

# 310 South 21st Street, Woodfort, Lebanon, Lebanon County, Pennsylvania, United States, 17042



## Room dimensions

Floor 1

Total sqft: 769 Living area: 666

#		Dimensions	sqft	Counted as living area
1	Recreation Room	18'11" x 21'8"	362 sq. ft	Yes
2	Storage	6'6" x 6'9"	44 sq. ft	No
3	Office	11'4" x 11'9"	132 sq. ft	Yes
4	Storage	11'7" x 3'7"	42 sq. ft	No
5	Room	11'4" x 9'9"	98 sq. ft	Yes

# 310 South 21st Street, Woodfort, Lebanon, Lebanon County, Pennsylvania, United States, 17042



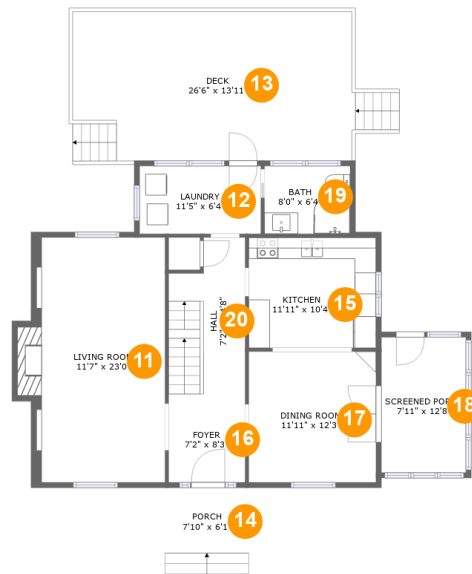
## Room dimensions

Floor 2

Total sqft: 1203 Living area: 1058

#		Dimensions	sqft	Counted as living area
6	W.I.C.	5'10" x 11'2"	65 sq. ft	Yes
7	Storage	6'10" x 18'9"	129 sq. ft	No
8	Recreation Room	20'4" x 34'8"	716 sq. ft	Yes
9	Room	5'10" x 7'9"	44 sq. ft	Yes
10	Bedroom	13'0" x 11'4"	132 sq. ft	Yes

# 310 South 21st Street, Woodfort, Lebanon, Lebanon County, Pennsylvania, United States, 17042



## Room dimensions

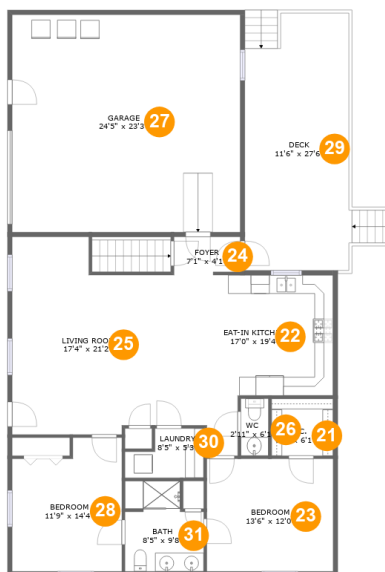
Floor 3

Total sqft: 1469

Living area: 926

#		Dimensions	sqft	Counted as living area
11	Living Room	11'7" x 23'0"	285 sq. ft	Yes
12	Laundry	11'5" x 6'4"	72 sq. ft	Yes
13	Deck	26'6" x 13'11"	366 sq. ft	No
14	Porch	7'10" x 6'1"	48 sq. ft	No
15	Kitchen	11'11" x 10'4"	124 sq. ft	Yes
16	Foyer	7'2" x 8'3"	59 sq. ft	Yes
17	Dining Room	11'11" x 12'3"	146 sq. ft	Yes
18	Screened Porch	7'11" x 12'8"	101 sq. ft	No
19	Bath	8'0" x 6'4"	51 sq. ft	Yes
20	Hall	7'2" x 14'8"	94 sq. ft	Yes

# 310 South 21st Street, Woodfort, Lebanon, Lebanon County, Pennsylvania, United States, 17042



## Room dimensions

Floor 4

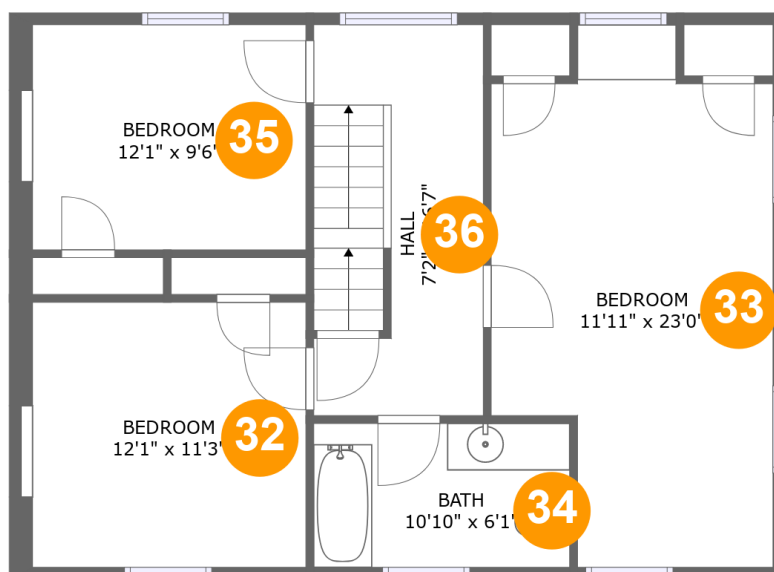
Total sqft: 2172 Living area: 1260

#		Dimensions	sqft	Counted as living area
21	W.I.C.	6'7" x 6'1"	40 sq. ft	Yes
22	Eat-in Kitchen	17'0" x 19'4"	252 sq. ft	Yes
23	Bedroom	13'6" x 12'0"	163 sq. ft	Yes
24	Foyer	7'1" x 4'1"	28 sq. ft	Yes
25	Living Room	17'4" x 21'2"	323 sq. ft	Yes
26	WC	2'11" x 6'1"	18 sq. ft	Yes
27	Garage	24'5" x 23'3"	568 sq. ft	No
28	Bedroom	11'9" x 14'4"	153 sq. ft	Yes
29	Deck	11'6" x 27'6"	308 sq. ft	No
30	Laundry	8'5" x 5'3"	36 sq. ft	Yes
31	Bath	8'5" x 9'8"	73 sq. ft	Yes

Scan captured on Wed, 26 Mar 2025 17:42:14 GMT

Information is calculated by Cubicasa technology deemed highly reliable but not guaranteed.

# 310 South 21st Street, Woodfort, Lebanon, Lebanon County, Pennsylvania, United States, 17042



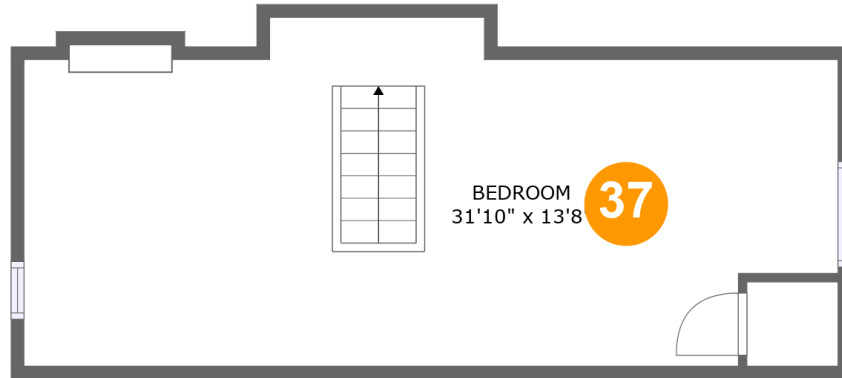
## Room dimensions

Floor 5

Total sqft: 787 Living area: 787

#		Dimensions	sqft	Counted as living area
32	Bedroom	12'1" x 11'3"	132 sq. ft	Yes
33	Bedroom	11'11" x 23'0"	231 sq. ft	Yes
34	Bath	10'10" x 6'1"	66 sq. ft	Yes
35	Bedroom	12'1" x 9'6"	112 sq. ft	Yes
36	Hall	7'2" x 16'7"	117 sq. ft	Yes

**310 South 21st Street, Woodfort, Lebanon, Lebanon  
County, Pennsylvania, United States, 17042**



## Room dimensions

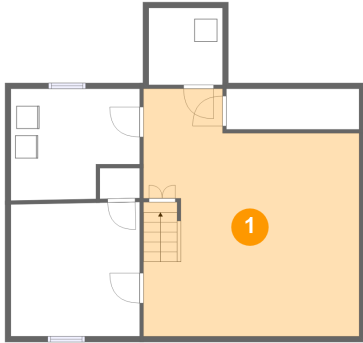
Floor 6

Total sqft: 446 Living area: 328

#		Dimensions	sqft	Counted as living area
37	Bedroom	31'10" x 13'8"	305 sq. ft	Yes

# 310 South 21st Street, Woodfort, Lebanon, Lebanon County, Pennsylvania, United States, 17042

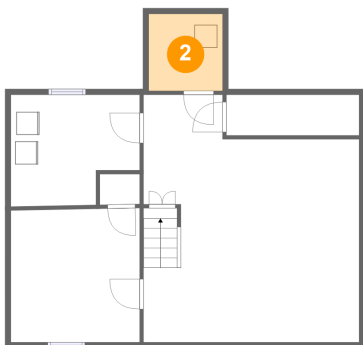
## 1 Floor 1 - Recreation Room



Dimensions: 18'11" x 21'8"  
Area: 362 sq. ft  
Counted as living area: Yes

Heated: Yes  
Finished: Yes  
Enclosed: Yes  
Contiguous: Yes  
Permitted: Yes  
Wet space: No  
Addition: No  
Conversion: No

## 2 Floor 1 - Storage



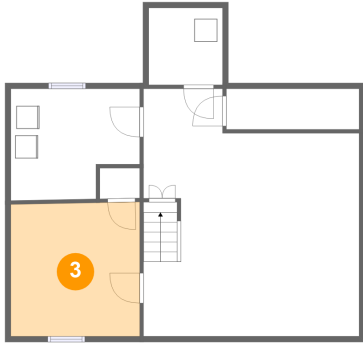
Dimensions: 6'6" x 6'9"  
Area: 44 sq. ft  
Counted as living area: No

Heated: No  
Finished: No  
Enclosed: No  
Contiguous: Yes  
Permitted: Yes  
Wet space: No  
Addition: No  
Conversion: No



# 310 South 21st Street, Woodfort, Lebanon, Lebanon County, Pennsylvania, United States, 17042

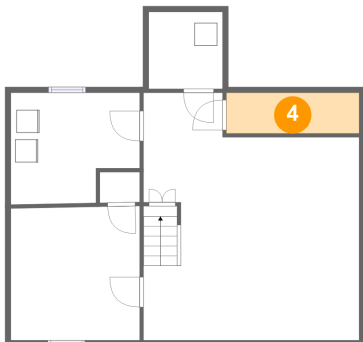
## 3 Floor 1 - Office



Dimensions: 11'4" x 11'9"  
Area: 132 sq. ft  
Counted as living area: Yes

Heated: Yes  
Finished: Yes  
Enclosed: Yes  
Contiguous: Yes  
Permitted: Yes  
Wet space: No  
Addition: No  
Conversion: No

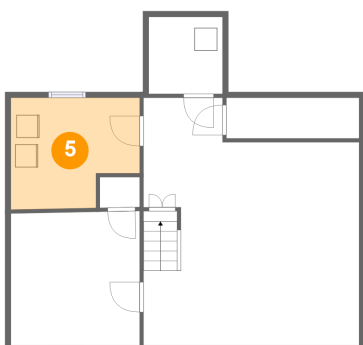
## 4 Floor 1 - Storage



Dimensions: 11'7" x 3'7"  
Area: 42 sq. ft  
Counted as living area: No

Heated: No  
Finished: No  
Enclosed: No  
Contiguous: Yes  
Permitted: Yes  
Wet space: No  
Addition: No  
Conversion: No

## 5 Floor 1 - Room

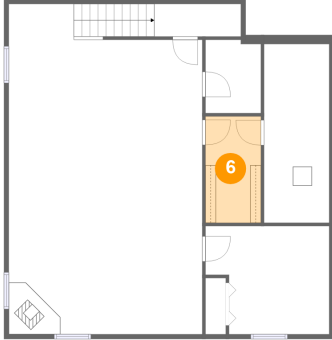


Dimensions: 11'4" x 9'9"  
Area: 98 sq. ft  
Counted as living area: Yes

Heated: Yes  
Finished: Yes  
Enclosed: Yes  
Contiguous: Yes  
Permitted: Yes  
Wet space: No  
Addition: No  
Conversion: No

# 310 South 21st Street, Woodfort, Lebanon, Lebanon County, Pennsylvania, United States, 17042

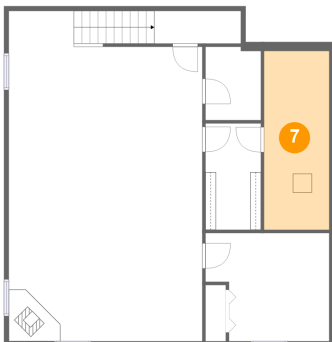
## 6 Floor 2 - W.I.C.



Dimensions: 5'10" x 11'2"  
Area: 65 sq. ft  
Counted as living area: Yes

Heated: Yes  
Finished: Yes  
Enclosed: Yes  
Contiguous: Yes  
Permitted: Yes  
Wet space: No  
Addition: No  
Conversion: No

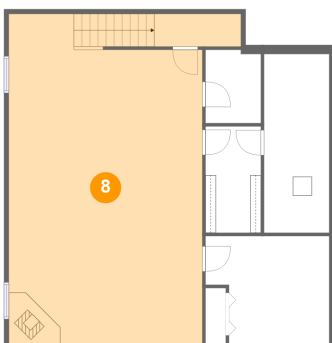
## 7 Floor 2 - Storage



Dimensions: 6'10" x 18'9"  
Area: 129 sq. ft  
Counted as living area: No

Heated: No  
Finished: No  
Enclosed: No  
Contiguous: Yes  
Permitted: Yes  
Wet space: No  
Addition: No  
Conversion: No

## 8 Floor 2 - Recreation Room

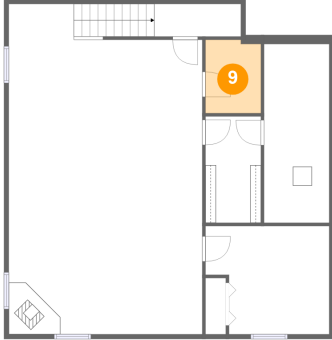


Dimensions: 20'4" x 34'8"  
Area: 716 sq. ft  
Counted as living area: Yes

Heated: Yes  
Finished: Yes  
Enclosed: Yes  
Contiguous: Yes  
Permitted: Yes  
Wet space: No  
Addition: No  
Conversion: No

# 310 South 21st Street, Woodfort, Lebanon, Lebanon County, Pennsylvania, United States, 17042

## 9 Floor 2 - Room



Dimensions: 5'10" x 7'9"  
Area: 44 sq. ft  
Counted as living area: Yes

Heated: Yes  
Finished: Yes  
Enclosed: Yes  
Contiguous: Yes  
Permitted: Yes  
Wet space: No  
Addition: No  
Conversion: No

## 10 Floor 2 - Bedroom



Dimensions: 13'0" x 11'4"  
Area: 132 sq. ft  
Counted as living area: Yes

Heated: Yes  
Finished: Yes  
Enclosed: Yes  
Contiguous: Yes  
Permitted: Yes  
Wet space: No  
Addition: No  
Conversion: No

## 11 Floor 3 - Living Room



Dimensions: 11'7" x 23'0"  
Area: 285 sq. ft  
Counted as living area: Yes

Heated: Yes  
Finished: Yes  
Enclosed: Yes  
Contiguous: Yes  
Permitted: Yes  
Wet space: No  
Addition: No  
Conversion: No

# 310 South 21st Street, Woodfort, Lebanon, Lebanon County, Pennsylvania, United States, 17042

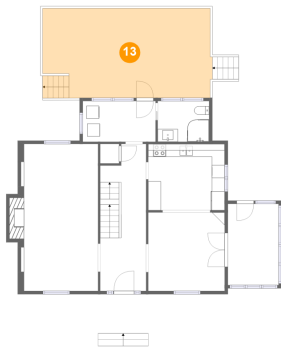
## 12 Floor 3 - Laundry



Dimensions: 11'5" x 6'4"  
Area: 72 sq. ft  
Counted as living area: Yes

Heated: Yes  
Finished: Yes  
Enclosed: Yes  
Contiguous: Yes  
Permitted: Yes  
Wet space: No  
Addition: No  
Conversion: No

## 13 Floor 3 - Deck



Dimensions: 26'6" x 13'11"  
Area: 366 sq. ft  
Counted as living area: No

Heated: No  
Finished: Yes  
Enclosed: No  
Contiguous: Yes  
Permitted: Yes  
Wet space: No  
Addition: No  
Conversion: No

## 14 Floor 3 - Porch



Dimensions: 7'10" x 6'1"  
Area: 48 sq. ft  
Counted as living area: No

Heated: No  
Finished: Yes  
Enclosed: No  
Contiguous: Yes  
Permitted: Yes  
Wet space: No  
Addition: No  
Conversion: No

# 310 South 21st Street, Woodfort, Lebanon, Lebanon County, Pennsylvania, United States, 17042

## 15 Floor 3 - Kitchen



Dimensions: 11'11" x 10'4"  
Area: 124 sq. ft  
Counted as living area: Yes

Heated: Yes  
Finished: Yes  
Enclosed: Yes  
Contiguous: Yes  
Permitted: Yes  
Wet space: No  
Addition: No  
Conversion: No

## 16 Floor 3 - Foyer



Dimensions: 7'2" x 8'3"  
Area: 59 sq. ft  
Counted as living area: Yes

Heated: Yes  
Finished: Yes  
Enclosed: Yes  
Contiguous: Yes  
Permitted: Yes  
Wet space: No  
Addition: No  
Conversion: No

## 17 Floor 3 - Dining Room



Dimensions: 11'11" x 12'3"  
Area: 146 sq. ft  
Counted as living area: Yes

Heated: Yes  
Finished: Yes  
Enclosed: Yes  
Contiguous: Yes  
Permitted: Yes  
Wet space: No  
Addition: No  
Conversion: No

# 310 South 21st Street, Woodfort, Lebanon, Lebanon County, Pennsylvania, United States, 17042

## 18 Floor 3 - Screened Porch



Dimensions: 7'11" x 12'8"  
Area: 101 sq. ft  
Counted as living area: No

Heated: No  
Finished: Yes  
Enclosed: No  
Contiguous: Yes  
Permitted: Yes  
Wet space: No  
Addition: No  
Conversion: No

## 19 Floor 3 - Bath



Dimensions: 8'0" x 6'4"  
Area: 51 sq. ft  
Counted as living area: Yes

Heated: Yes  
Finished: Yes  
Enclosed: Yes  
Contiguous: Yes  
Permitted: Yes  
Wet space: Yes  
Addition: No  
Conversion: No

## 20 Floor 3 - Hall

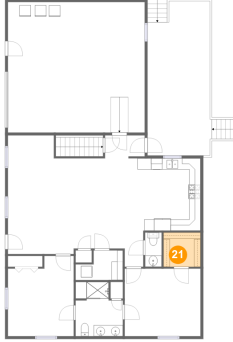


Dimensions: 7'2" x 14'8"  
Area: 94 sq. ft  
Counted as living area: Yes

Heated: Yes  
Finished: Yes  
Enclosed: Yes  
Contiguous: Yes  
Permitted: Yes  
Wet space: No  
Addition: No  
Conversion: No

# 310 South 21st Street, Woodfort, Lebanon, Lebanon County, Pennsylvania, United States, 17042

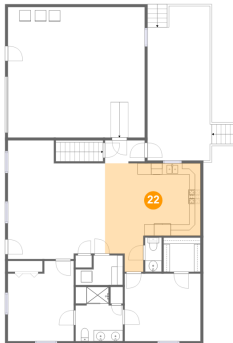
## 21 Floor 4 - W.I.C.



Dimensions: 6'7" x 6'1"  
Area: 40 sq. ft  
Counted as living area: Yes

Heated: Yes  
Finished: Yes  
Enclosed: Yes  
Contiguous: Yes  
Permitted: Yes  
Wet space: No  
Addition: No  
Conversion: No

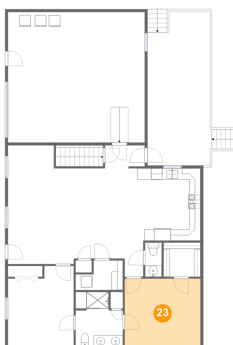
## 22 Floor 4 - Eat-in Kitchen



Dimensions: 17'0" x 19'4"  
Area: 252 sq. ft  
Counted as living area: Yes

Heated: Yes  
Finished: Yes  
Enclosed: Yes  
Contiguous: Yes  
Permitted: Yes  
Wet space: No  
Addition: No  
Conversion: No

## 23 Floor 4 - Bedroom

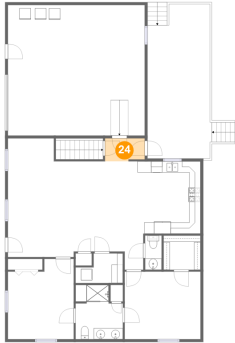


Dimensions: 13'6" x 12'0"  
Area: 163 sq. ft  
Counted as living area: Yes

Heated: Yes  
Finished: Yes  
Enclosed: Yes  
Contiguous: Yes  
Permitted: Yes  
Wet space: No  
Addition: No  
Conversion: No

# 310 South 21st Street, Woodfort, Lebanon, Lebanon County, Pennsylvania, United States, 17042

## 24 Floor 4 - Foyer



Dimensions: 7'1" x 4'1"  
Area: 28 sq. ft  
Counted as living area: Yes

Heated: Yes  
Finished: Yes  
Enclosed: Yes  
Contiguous: Yes  
Permitted: Yes  
Wet space: No  
Addition: No  
Conversion: No

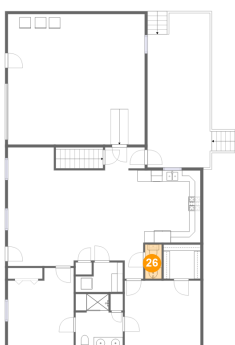
## 25 Floor 4 - Living Room



Dimensions: 17'4" x 21'2"  
Area: 323 sq. ft  
Counted as living area: Yes

Heated: Yes  
Finished: Yes  
Enclosed: Yes  
Contiguous: Yes  
Permitted: Yes  
Wet space: No  
Addition: No  
Conversion: No

## 26 Floor 4 - WC



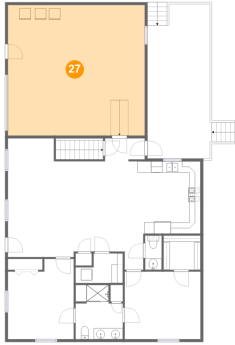
Dimensions: 2'11" x 6'1"  
Area: 18 sq. ft  
Counted as living area: Yes

Heated: Yes  
Finished: Yes  
Enclosed: Yes  
Contiguous: Yes  
Permitted: Yes  
Wet space: Yes  
Addition: No  
Conversion: No



# 310 South 21st Street, Woodfort, Lebanon, Lebanon County, Pennsylvania, United States, 17042

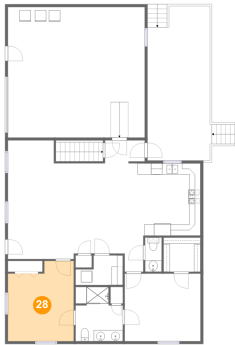
## 27 Floor 4 - Garage



Dimensions: 24'5" x 23'3"  
Area: 568 sq. ft  
Counted as living area: No

Heated: No  
Finished: No  
Enclosed: Yes  
Contiguous: Yes  
Permitted: Yes  
Wet space: No  
Addition: No  
Conversion: No

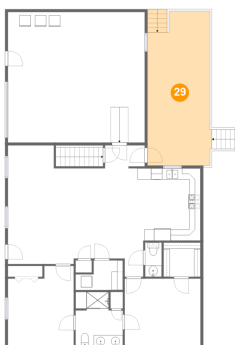
## 28 Floor 4 - Bedroom



Dimensions: 11'9" x 14'4"  
Area: 153 sq. ft  
Counted as living area: Yes

Heated: Yes  
Finished: Yes  
Enclosed: Yes  
Contiguous: Yes  
Permitted: Yes  
Wet space: No  
Addition: No  
Conversion: No

## 29 Floor 4 - Deck



Dimensions: 11'6" x 27'6"  
Area: 308 sq. ft  
Counted as living area: No

Heated: No  
Finished: Yes  
Enclosed: No  
Contiguous: Yes  
Permitted: Yes  
Wet space: No  
Addition: No  
Conversion: No

# 310 South 21st Street, Woodfort, Lebanon, Lebanon County, Pennsylvania, United States, 17042

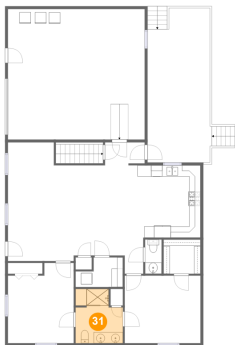
## 30 Floor 4 - Laundry



Dimensions: 8'5" x 5'3"  
Area: 36 sq. ft  
Counted as living area: Yes

Heated: Yes  
Finished: Yes  
Enclosed: Yes  
Contiguous: Yes  
Permitted: Yes  
Wet space: No  
Addition: No  
Conversion: No

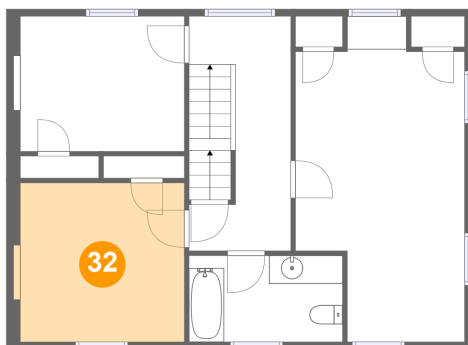
## 31 Floor 4 - Bath



Dimensions: 8'5" x 9'8"  
Area: 73 sq. ft  
Counted as living area: Yes

Heated: Yes  
Finished: Yes  
Enclosed: Yes  
Contiguous: Yes  
Permitted: Yes  
Wet space: Yes  
Addition: No  
Conversion: No

## 32 Floor 5 - Bedroom

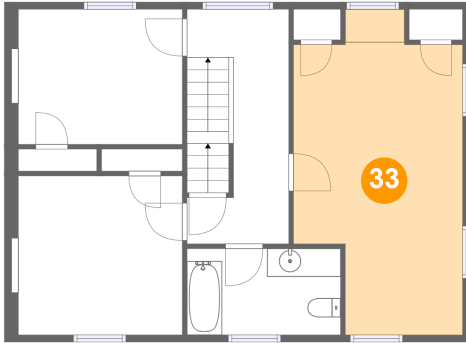


Dimensions: 12'1" x 11'3"  
Area: 132 sq. ft  
Counted as living area: Yes

Heated: Yes  
Finished: Yes  
Enclosed: Yes  
Contiguous: Yes  
Permitted: Yes  
Wet space: No  
Addition: No  
Conversion: No

# 310 South 21st Street, Woodfort, Lebanon, Lebanon County, Pennsylvania, United States, 17042

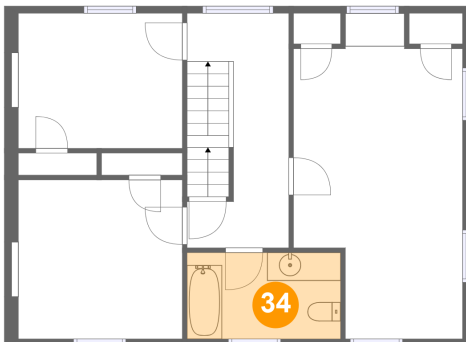
## 33 Floor 5 - Bedroom



Dimensions: 11'11" x 23'0"  
Area: 231 sq. ft  
Counted as living area: Yes

Heated: Yes  
Finished: Yes  
Enclosed: Yes  
Contiguous: Yes  
Permitted: Yes  
Wet space: No  
Addition: No  
Conversion: No

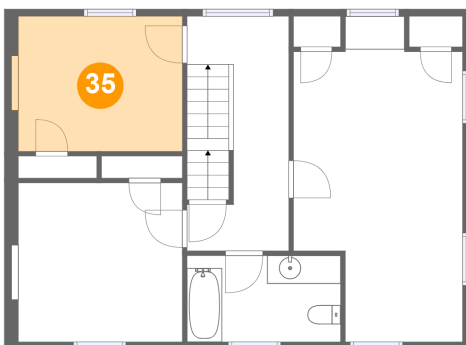
## 34 Floor 5 - Bath



Dimensions: 10'10" x 6'1"  
Area: 66 sq. ft  
Counted as living area: Yes

Heated: Yes  
Finished: Yes  
Enclosed: Yes  
Contiguous: Yes  
Permitted: Yes  
Wet space: Yes  
Addition: No  
Conversion: No

## 35 Floor 5 - Bedroom

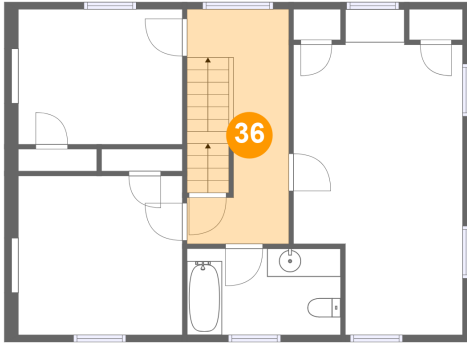


Dimensions: 12'1" x 9'6"  
Area: 112 sq. ft  
Counted as living area: Yes

Heated: Yes  
Finished: Yes  
Enclosed: Yes  
Contiguous: Yes  
Permitted: Yes  
Wet space: No  
Addition: No  
Conversion: No

**310 South 21st Street, Woodfort, Lebanon, Lebanon  
County, Pennsylvania, United States, 17042**

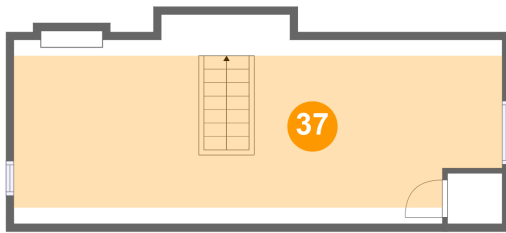
**36 Floor 5 - Hall**



Dimensions: 7'2" x 16'7"  
Area: 117 sq. ft  
Counted as living area: Yes

Heated: Yes  
Finished: Yes  
Enclosed: Yes  
Contiguous: Yes  
Permitted: Yes  
Wet space: No  
Addition: No  
Conversion: No

**37 Floor 6 - Bedroom**



Dimensions: 31'10" x 13'8"  
Area: 305 sq. ft  
Counted as living area: Yes

Heated: Yes  
Finished: Yes  
Enclosed: Yes  
Contiguous: Yes  
Permitted: Yes  
Wet space: No  
Addition: No  
Conversion: No