

Garage
22'8" x 20'9"

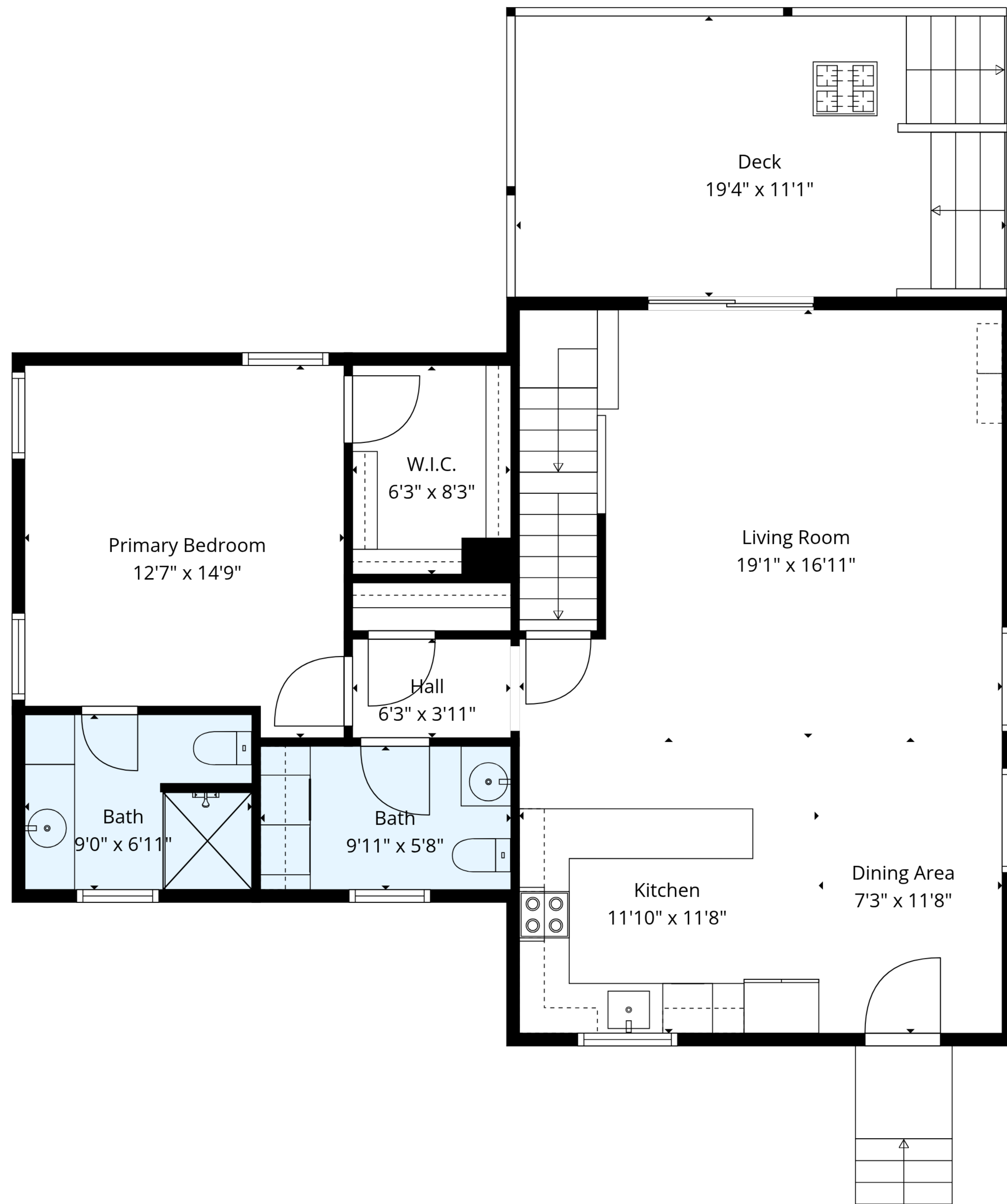
Basement
19'1" x 28'7"

TOTAL: 2167 sq. ft

1st floor: 431 sq. ft, 2nd floor: 951 sq. ft, 3rd floor: 785 sq. ft

EXCLUDED AREAS: BASEMENT: 506 sq. ft, DECK: 214 sq. ft, LOW CEILING: 91 sq. ft,
ATTIC: 75 sq. ft, WALLS: 219 sq. ft



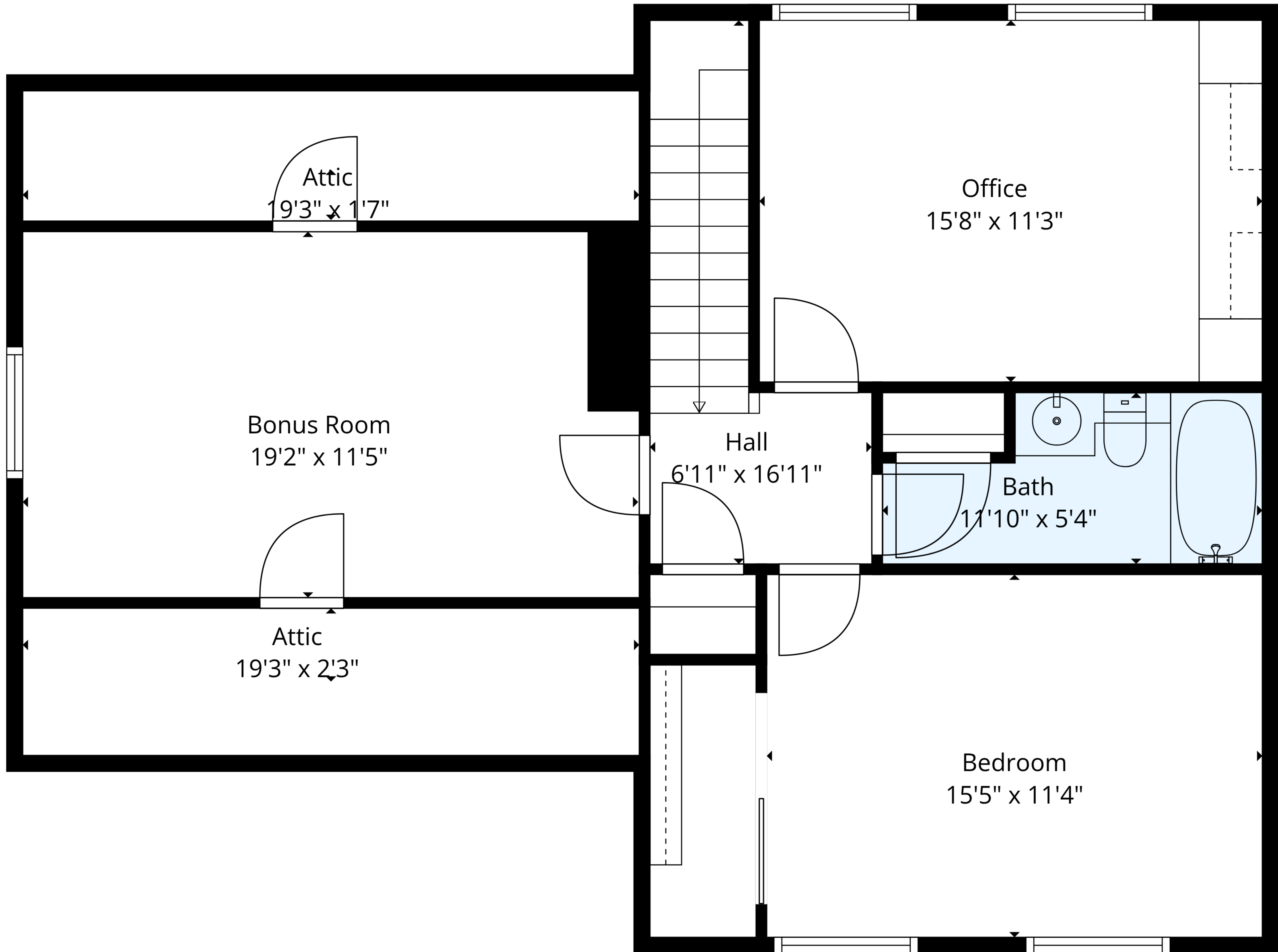


TOTAL: 2167 sq. ft

1st floor: 431 sq. ft, 2nd floor: 951 sq. ft, 3rd floor: 785 sq. ft

EXCLUDED AREAS: BASEMENT: 506 sq. ft, DECK: 214 sq. ft, LOW CEILING: 91 sq. ft,
ATTIC: 75 sq. ft, WALLS: 219 sq. ft



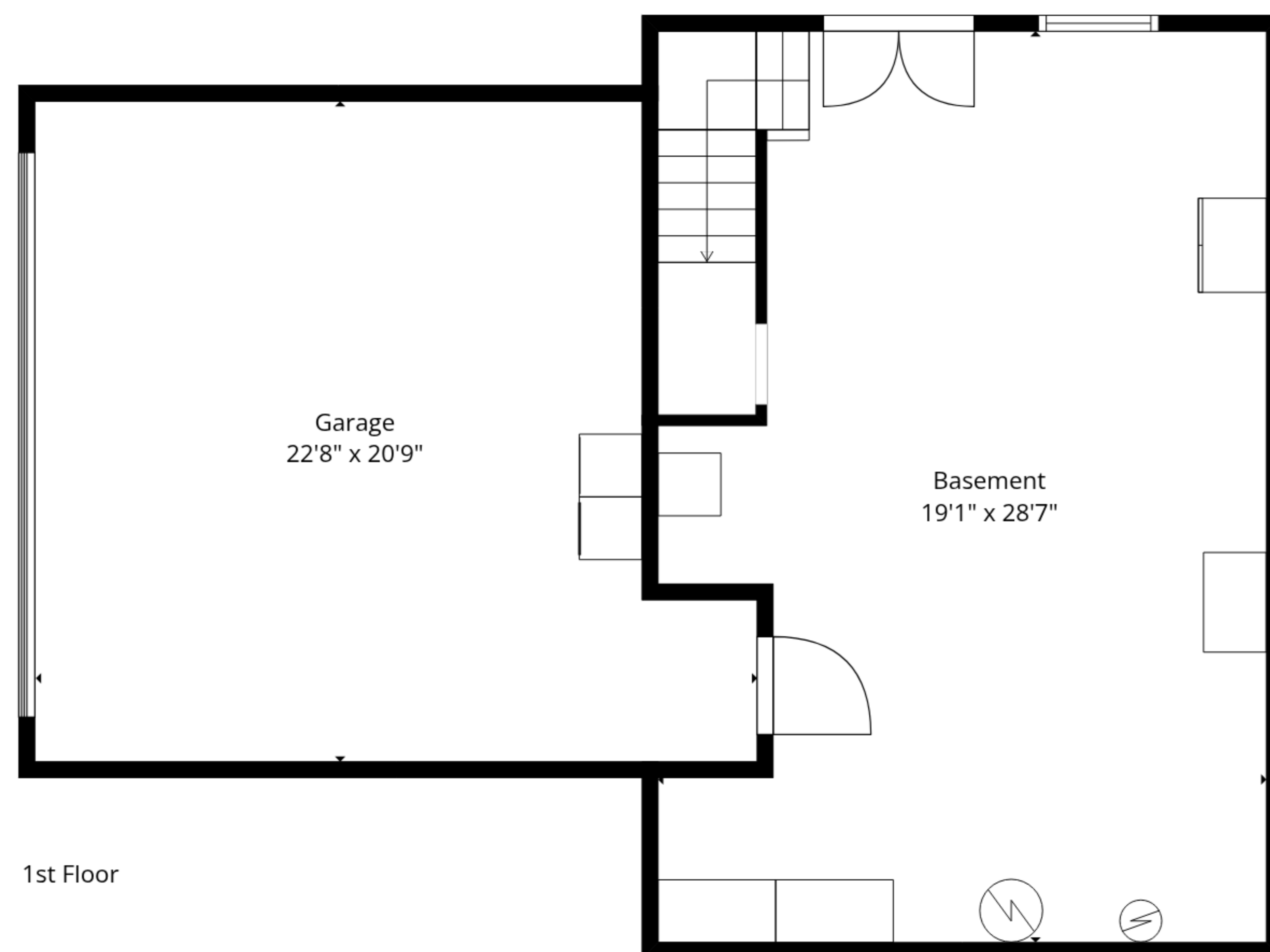
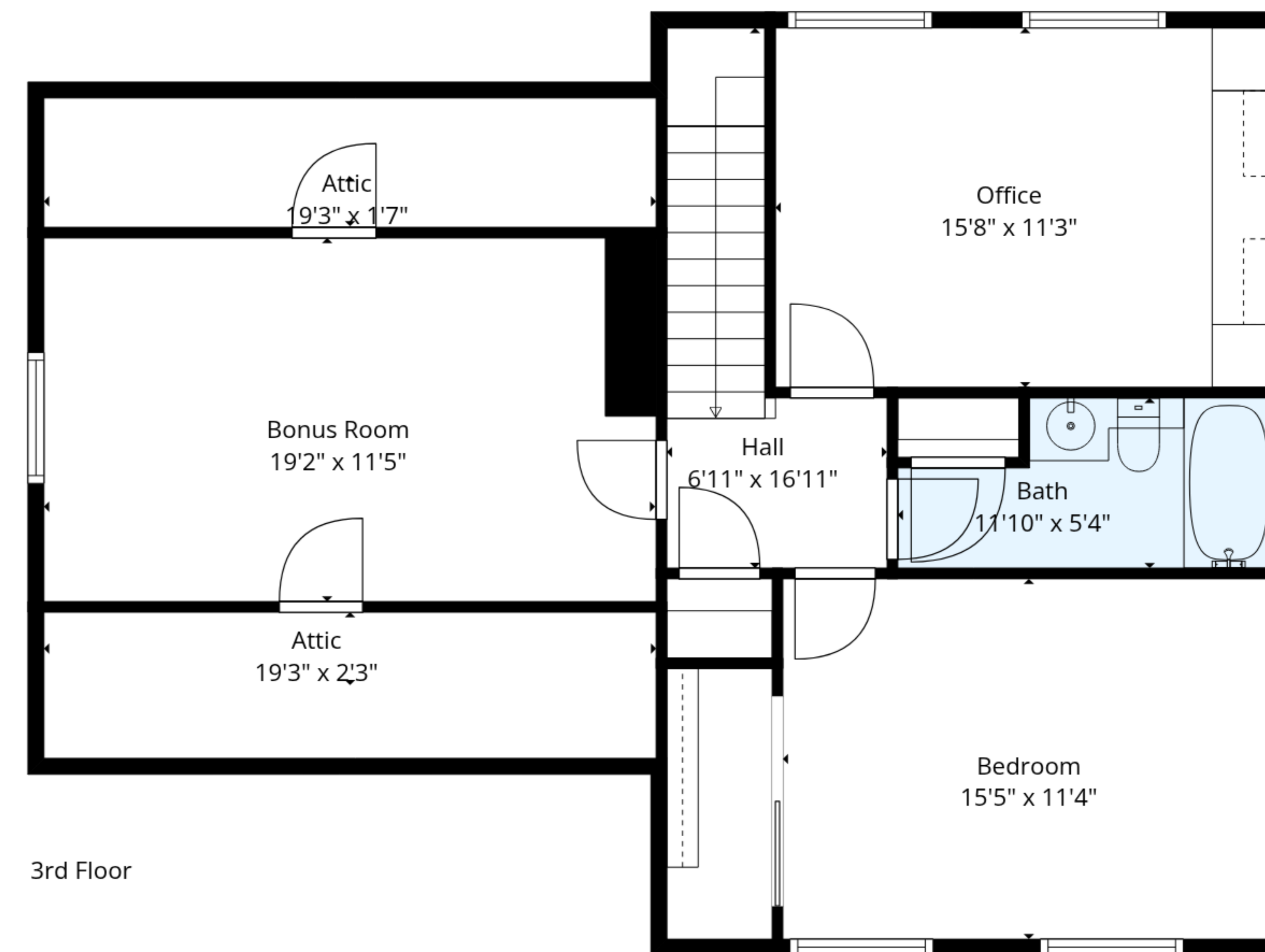
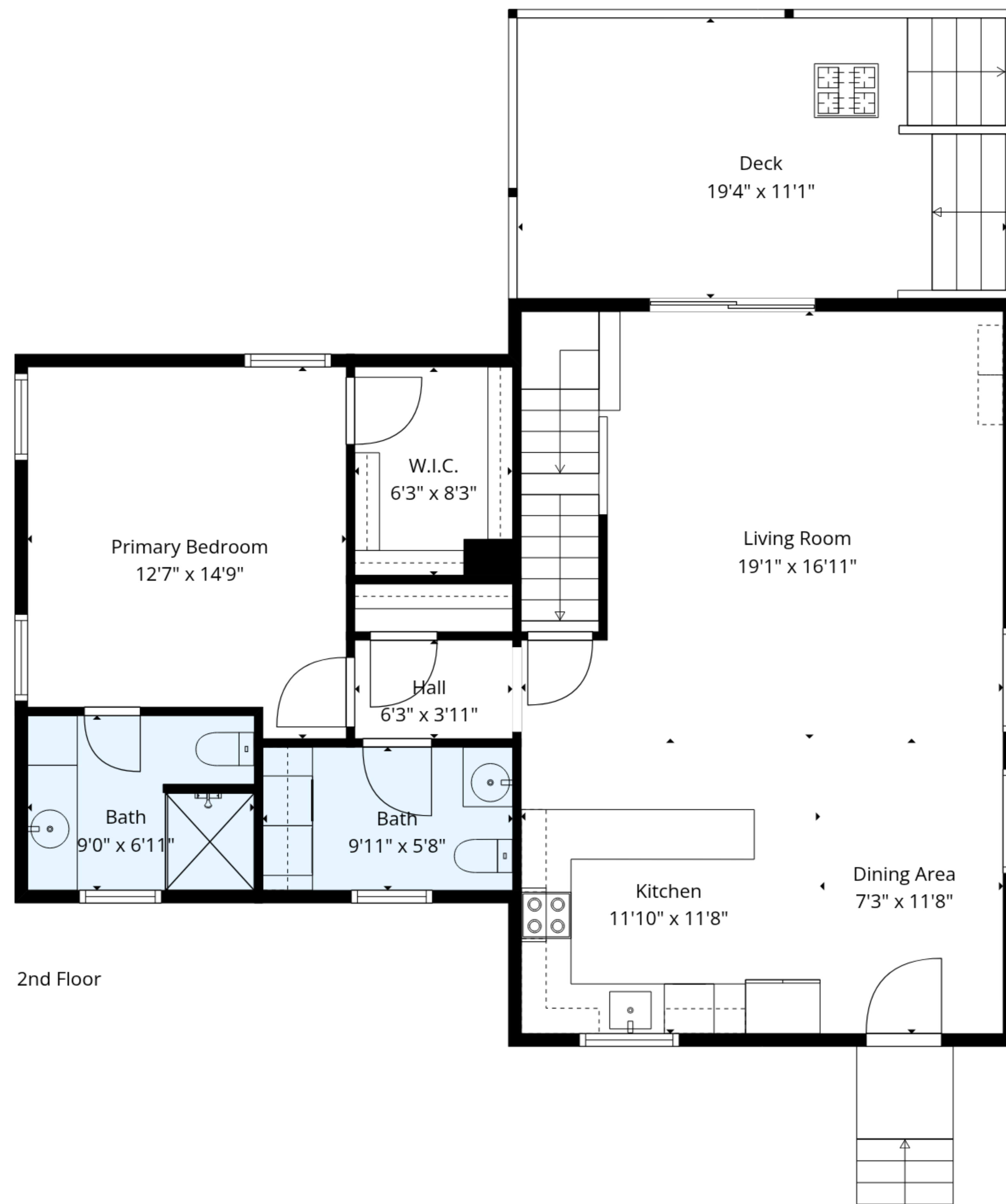


TOTAL: 2167 sq. ft

1st floor: 431 sq. ft, 2nd floor: 951 sq. ft, 3rd floor: 785 sq. ft

EXCLUDED AREAS: BASEMENT: 506 sq. ft, DECK: 214 sq. ft, LOW CEILING: 91 sq. ft,
ATTIC: 75 sq. ft, WALLS: 219 sq. ft





TOTAL: 2167 sq. ft

1st floor: 431 sq. ft, 2nd floor: 951 sq. ft, 3rd floor: 785 sq. ft

EXCLUDED AREAS: BASEMENT: 506 sq. ft, DECK: 214 sq. ft, LOW CEILING: 91 sq. ft,
ATTIC: 75 sq. ft, WALLS: 219 sq. ft

