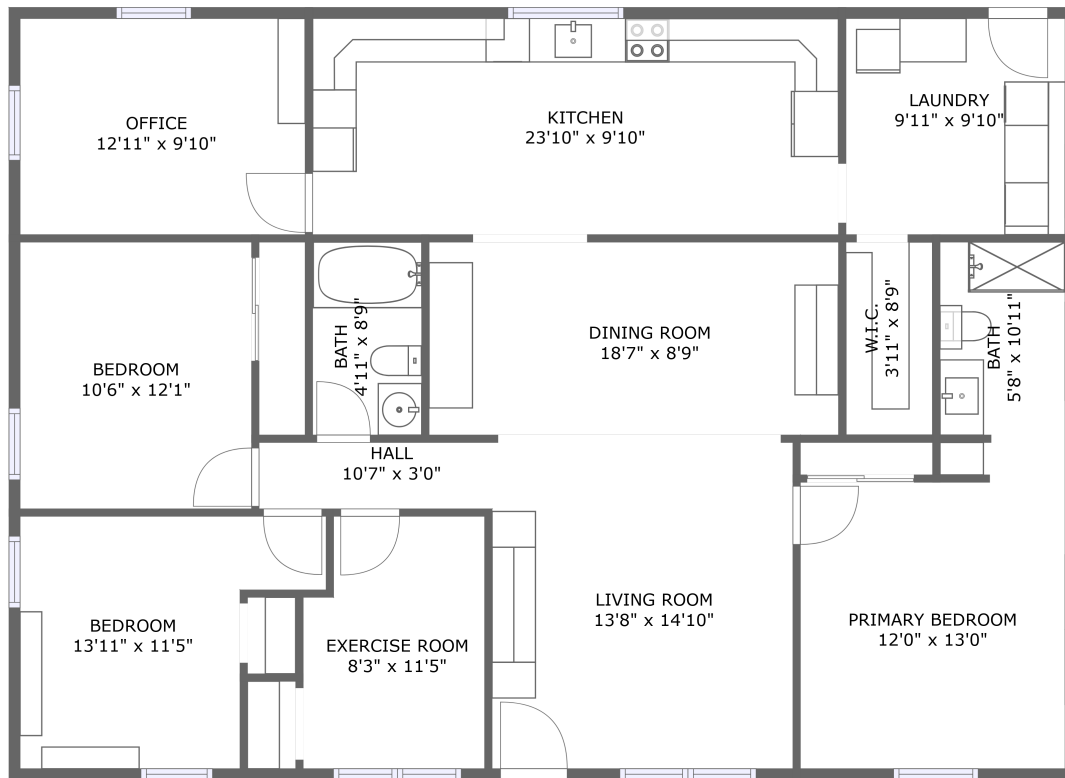


11975 162nd Terrace, McAlpin, Florida 32062, United States



FLOOR 1

Property summary

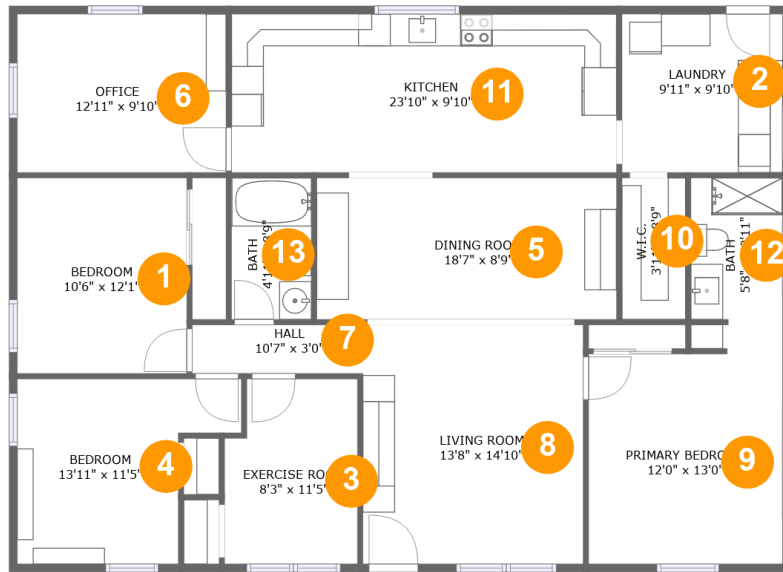
 **0** Garages  **3** Bedrooms  **2** Bathrooms  **0** Half baths

 **1** Floors

 **1,694** Gross living area sqft

 **1,694** Total sqft

11975 162nd Terrace, McAlpin, Florida 32062, United States



Room dimensions

Floor 1

Total sqft: 1694 Living area: 1694

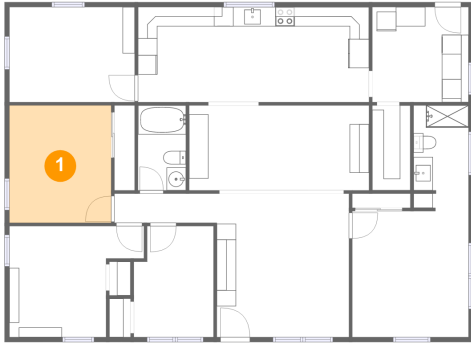
#		Dimensions	sqft	Counted as living area
1	Bedroom	10'6" x 12'1"	127 sq. ft	Yes
2	Laundry	9'11" x 9'10"	97 sq. ft	Yes
3	Exercise Room	8'3" x 11'5"	89 sq. ft	Yes
4	Bedroom	13'11" x 11'5"	127 sq. ft	Yes
5	Dining Room	18'7" x 8'9"	163 sq. ft	Yes
6	Office	12'11" x 9'10"	127 sq. ft	Yes
7	Hall	10'7" x 3'0"	32 sq. ft	Yes
8	Living Room	13'8" x 14'10"	202 sq. ft	Yes
9	Primary Bedroom	12'0" x 13'0"	156 sq. ft	Yes
10	W.I.C.	3'11" x 8'9"	34 sq. ft	Yes
11	Kitchen	23'10" x 9'10"	234 sq. ft	Yes

11975 162nd Terrace, McAlpin, Florida 32062, United States

#		Dimensions	sqft	Counted as living area
12	Bath	5'8" x 10'11"	60 sq. ft	Yes
13	Bath	4'11" x 8'9"	43 sq. ft	Yes

11975 162nd Terrace, McAlpin, Florida 32062, United States

1 Floor 1 - Bedroom



Dimensions: 10'6" x 12'1"
Area: 127 sq. ft
Counted as living area: Yes

Heated: Yes
Finished: Yes
Enclosed: Yes
Contiguous: Yes
Permitted: Yes
Wet space: No
Addition: No
Conversion: No

2 Floor 1 - Laundry

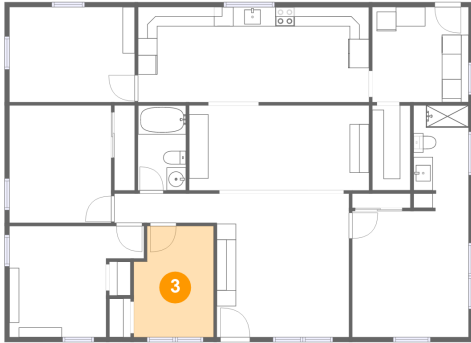


Dimensions: 9'11" x 9'10"
Area: 97 sq. ft
Counted as living area: Yes

Heated: Yes
Finished: Yes
Enclosed: Yes
Contiguous: Yes
Permitted: Yes
Wet space: No
Addition: No
Conversion: No

11975 162nd Terrace, McAlpin, Florida 32062, United States

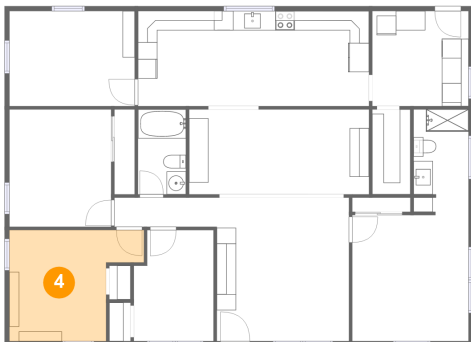
3 Floor 1 - Exercise Room



Dimensions: 8'3" x 11'5"
Area: 89 sq. ft
Counted as living area: Yes

Heated: Yes
Finished: Yes
Enclosed: Yes
Contiguous: Yes
Permitted: Yes
Wet space: No
Addition: No
Conversion: No

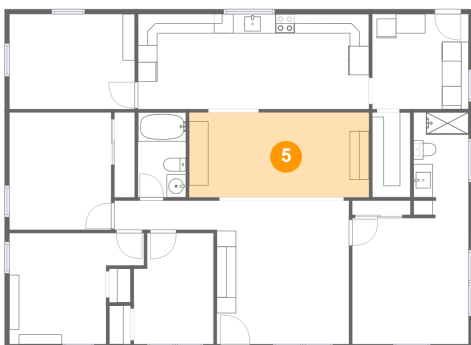
4 Floor 1 - Bedroom



Dimensions: 13'11" x 11'5"
Area: 127 sq. ft
Counted as living area: Yes

Heated: Yes
Finished: Yes
Enclosed: Yes
Contiguous: Yes
Permitted: Yes
Wet space: No
Addition: No
Conversion: No

5 Floor 1 - Dining Room

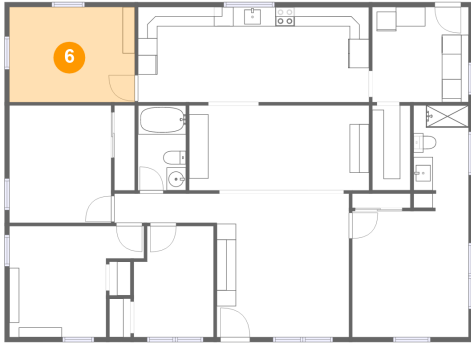


Dimensions: 18'7" x 8'9"
Area: 163 sq. ft
Counted as living area: Yes

Heated: Yes
Finished: Yes
Enclosed: Yes
Contiguous: Yes
Permitted: Yes
Wet space: No
Addition: No
Conversion: No

11975 162nd Terrace, McAlpin, Florida 32062, United States

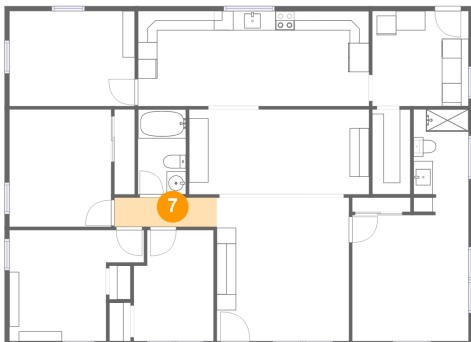
6 Floor 1 - Office



Dimensions: 12'11" x 9'10"
Area: 127 sq. ft
Counted as living area: Yes

Heated: Yes
Finished: Yes
Enclosed: Yes
Contiguous: Yes
Permitted: Yes
Wet space: No
Addition: No
Conversion: No

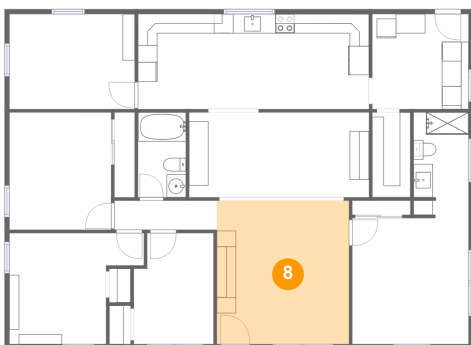
7 Floor 1 - Hall



Dimensions: 10'7" x 3'0"
Area: 32 sq. ft
Counted as living area: Yes

Heated: Yes
Finished: Yes
Enclosed: Yes
Contiguous: Yes
Permitted: Yes
Wet space: No
Addition: No
Conversion: No

8 Floor 1 - Living Room

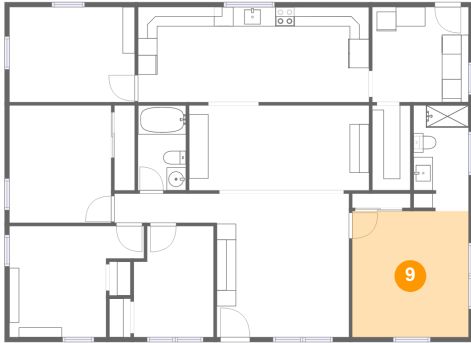


Dimensions: 13'8" x 14'10"
Area: 202 sq. ft
Counted as living area: Yes

Heated: Yes
Finished: Yes
Enclosed: Yes
Contiguous: Yes
Permitted: Yes
Wet space: No
Addition: No
Conversion: No

11975 162nd Terrace, McAlpin, Florida 32062, United States

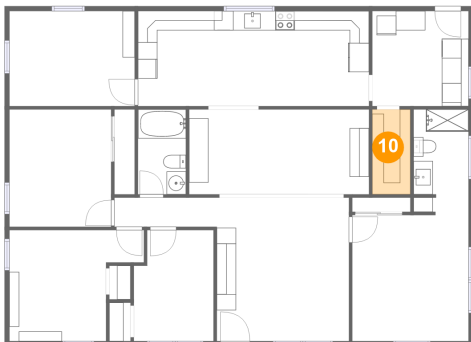
9 Floor 1 - Primary Bedroom



Dimensions: 12'0" x 13'0"
Area: 156 sq. ft
Counted as living area: Yes

Heated: Yes
Finished: Yes
Enclosed: Yes
Contiguous: Yes
Permitted: Yes
Wet space: No
Addition: No
Conversion: No

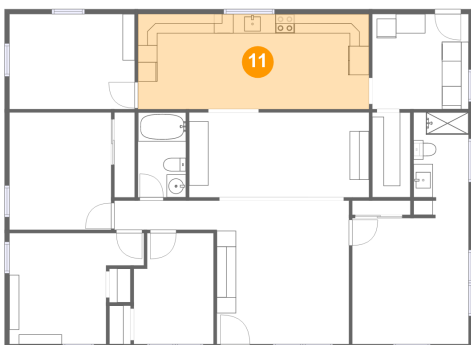
10 Floor 1 - W.I.C.



Dimensions: 3'11" x 8'9"
Area: 34 sq. ft
Counted as living area: Yes

Heated: Yes
Finished: Yes
Enclosed: Yes
Contiguous: Yes
Permitted: Yes
Wet space: No
Addition: No
Conversion: No

11 Floor 1 - Kitchen



Dimensions: 23'10" x 9'10"
Area: 234 sq. ft
Counted as living area: Yes

Heated: Yes
Finished: Yes
Enclosed: Yes
Contiguous: Yes
Permitted: Yes
Wet space: No
Addition: No
Conversion: No

11975 162nd Terrace, McAlpin, Florida 32062, United States

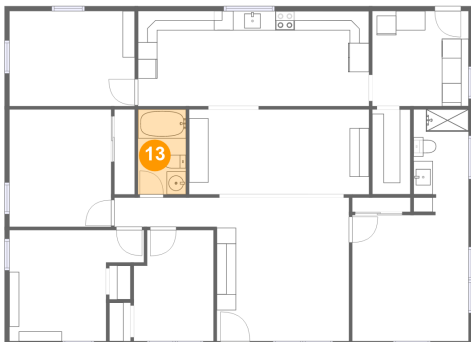
12 Floor 1 - Bath



Dimensions: 5'8" x 10'11"
Area: 60 sq. ft
Counted as living area: Yes

Heated: Yes
Finished: Yes
Enclosed: Yes
Contiguous: Yes
Permitted: Yes
Wet space: Yes
Addition: No
Conversion: No

13 Floor 1 - Bath



Dimensions: 4'11" x 8'9"
Area: 43 sq. ft
Counted as living area: Yes

Heated: Yes
Finished: Yes
Enclosed: Yes
Contiguous: Yes
Permitted: Yes
Wet space: Yes
Addition: No
Conversion: No