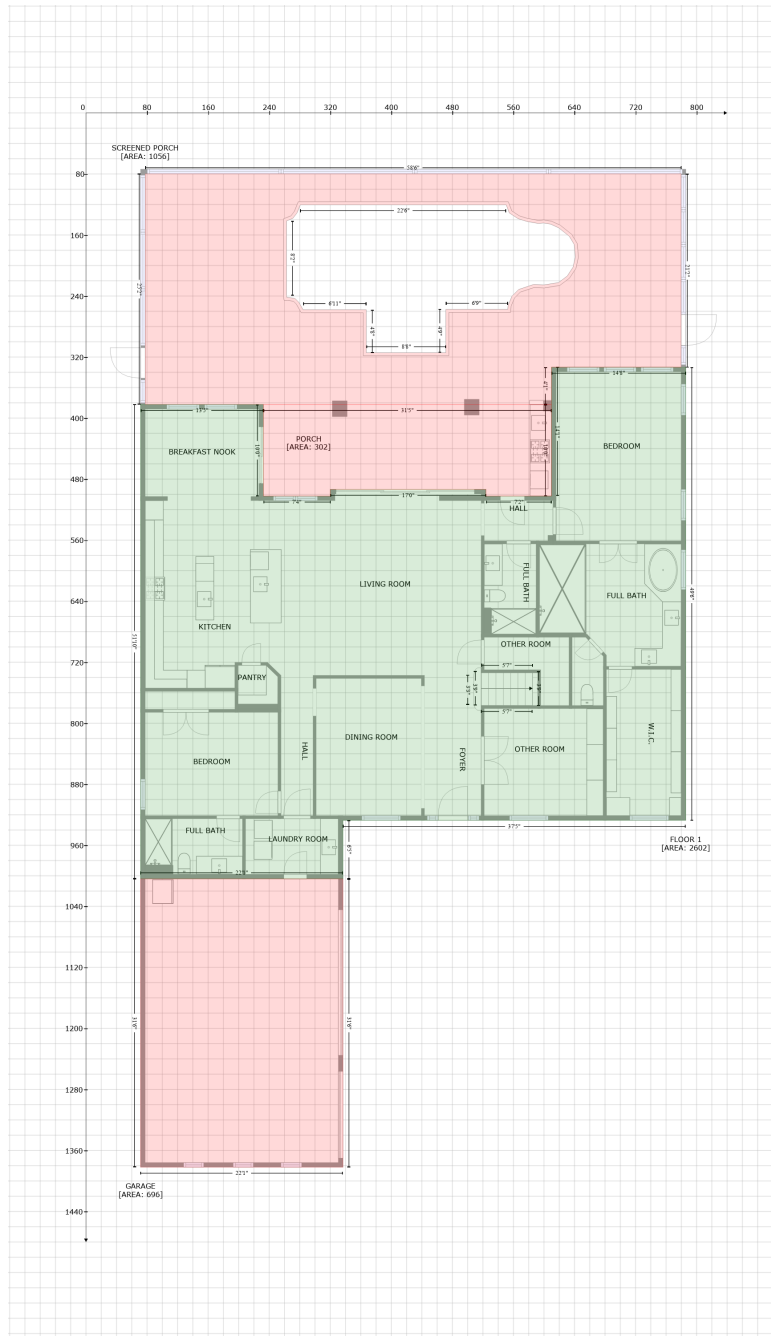


# 9152 Tillinghast Dr, Tampa, FL, United States

Gross Living Area: 5272 sq. ft



Space	Area (sq. ft)	Calculation
FLOOR 1 (Living area)	2602	Coordinate Polygon Area Algorithm using inches $-((785.8 + 785.8) * (333.3 - 927.3) + (785.8 + 336.6) * (927.3 - 927.3) + (336.6 + 336.6) * (927.3 - 1004) + (336.6 + 71.5) * (1004 - 1004) + (71.5 + 71.5) * (1004 - 382.2) + (71.5 + 232.4) * (382.2 - 382.2) + (232.4 + 232.4) * (382.2 - 502.2) + (232.4 + 320.1) * (502.2 - 502.2) + (320.1 + 320.1) * (502.2 - 493.4) + (320.1 + 524) * (493.4 - 493.4) + (524 + 524) * (493.4 - 502.2) + (524 + 609.9) * (502.2 - 502.2) + (609.9 + 609.9) * (502.2 - 333.3) + (609.9 + 785.8) * (333.3 - 333.3)) * 0.5 * 0.00694$

# 9152 Tillinghast Dr, Tampa, FL, United States

Gross Living Area: 5272 sq. ft

Space	Area (sq. ft)	Calculation <small>Coordinate Polygon Area Algorithm using inches</small>
GARAGE (Non-living area)	696	$-\left((336.6 + 336.6) * (1004 - 1381.9) + (336.6 + 71.5) * (1381.9 - 1381.9) + (71.5 + 71.5) * (1381.9 - 1004) + (71.5 + 336.6) * (1004 - 1004)\right) * 0.5 * 0.00694$
SCREENED PORCH (Non-living area)	1056	$-\left((779.8 + 779.8) * (79.8 - 333.3) + (779.8 + 609.9) * (333.3 - 333.3) + (609.9 + 609.9) * (333.3 - 382.2) + (609.9 + 77.5) * (382.2 - 382.2) + (77.5 + 77.5) * (382.2 - 79.8) + (77.5 + 779.8) * (79.8 - 79.8)\right) * 0.5 * 0.00694 + -\left((550.5 + 280.8) * (120.4 - 120.4) + (280.8 + 276.4) * (120.4 - 131.2) + (276.4 + 271) * (131.2 - 138.2) + (271 + 262.7) * (138.2 - 141.6) + (262.7 + 262.7) * (141.6 - 239.2) + (262.7 + 263) * (239.2 - 241.7) + (263 + 273.8) * (241.7 - 243.2) + (273.8 + 278.8) * (243.2 - 248.2) + (278.8 + 284.4) * (248.2 - 258) + (284.4 + 367.2) * (258 - 258) + (367.2 + 367.2) * (258 - 314.3) + (367.2 + 471.4) * (314.3 - 314.3) + (471.4 + 471.4) * (314.3 - 257.5) + (471.4 + 552.6) * (257.5 - 257.5) + (552.6 + 553) * (257.5 - 252.3) + (553 + 558.1) * (252.3 - 240.2) + (558.1 + 566.9) * (240.2 - 231.4) + (566.9 + 586.3) * (231.4 - 224.9) + (586.3 + 600.1) * (224.9 - 225.5) + (600.1 + 619.2) * (225.5 - 222.3) + (619.2 + 630.5) * (222.3 - 213.8) + (630.5 + 638.2) * (213.8 - 202.1) + (638.2 + 641.1) * (202.1 - 188.8) + (641.1 + 639.8) * (188.8 - 172.6) + (639.8 + 633.2) * (172.6 - 161.8) + (633.2 + 619.4) * (161.8 - 150.7) + (619.4 + 608.8) * (150.7 - 145.8) + (608.8 + 599.6) * (145.8 - 144.3) + (599.6 + 592.8) * (144.3 - 144.9) + (592.8 + 577.7) * (144.9 - 142.2) + (577.7 + 566.2) * (142.2 - 138.6) + (566.2 + 554.7) * (138.6 - 131.2) + (554.7 + 550.5) * (131.2 - 120.4)\right) * 0.5 * 0.00694$
PORCH (Non-living area)	302	$-\left((609.9 + 609.9) * (382.2 - 502.2) + (609.9 + 524) * (502.2 - 502.2) + (524 + 524) * (502.2 - 493.4) + (524 + 320.1) * (493.4 - 493.4) + (320.1 + 320.1) * (493.4 - 502.2) + (320.1 + 232.4) * (502.2 - 502.2) + (232.4 + 232.4) * (502.2 - 382.2) + (232.4 + 609.9) * (382.2 - 382.2)\right) * 0.5 * 0.00694$

# 9152 Tillinghast Dr, Tampa, FL, United States

Gross Living Area: 5272 sq. ft



Space	Area (sq. ft)	Calculation <small>Coordinate Polygon Area Algorithm using inches</small>
FLOOR 2 (Living area)	2670	$-((786.7 + 786.7) * (78.6 - 623.6) + (786.7 + 635.4) * (623.6 - 623.6) + (635.4 + 635.4) * (623.6 - 646.1) + (635.4 + 522.7) * (646.1 - 646.1) + (522.7 + 522.7) * (646.1 - 479.4) + (522.7 + 518.2) * (479.4 - 479.4) + (518.2 + 515.3) * (479.4 - 476.9) + (515.3 + 513.1) * (476.9 - 472.2) + (513.1 + 512.5) * (472.2 - 433.3) + (512.5 + 514.2) * (433.3 - 430.3) + (433.3 - 430.3) * (430.3 - 430.3) + (448.3 + 448.3) * (430.3 - 646.1) + (448.3 + 335.7) * (646.1 - 646.1) + (335.7 + 335.7) * (646.1 - 623.6) + (335.7 + 64.9) * (623.6 - 623.6) + (64.9 + 64.9) * (623.6 - 78.6) + (64.9 + 786.7) * (78.6 - 78.6)) * 0.5 * 0.00694$
OPEN TO BELOW (Non-living area)	108	$-((514.2 + 512.5) * (430.3 - 433.3) + (512.5 + 513.1) * (433.3 - 472.2) + (513.1 + 515.3) * (472.2 - 476.9) + (515.3 + 518.2) * (476.9 - 479.4) + (518.2 + 522.7) * (479.4 - 479.4) + (522.7 + 522.7) * (479.4 - 646.1) + (522.7 + 448.3) * (646.1 - 646.1) + (448.3 + 448.3) * (646.1 - 430.3) + (448.3 + 514.2) * (430.3 - 430.3)) * 0.5 * 0.00694$