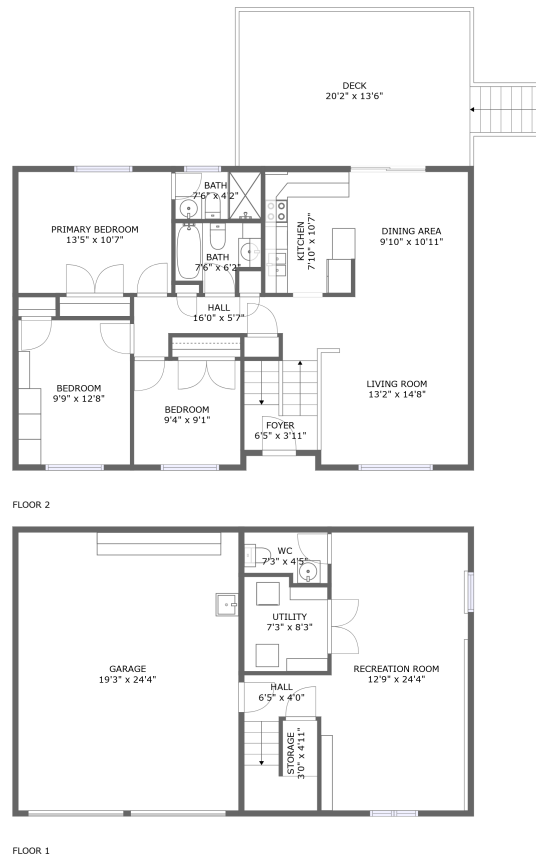



12109 Sioux Place, Quince Orchard Manor, Gaithersburg, Montgomery County, Maryland, United



Property summary

 **1** Garages

 **3** Bedrooms

 **2** Bathrooms

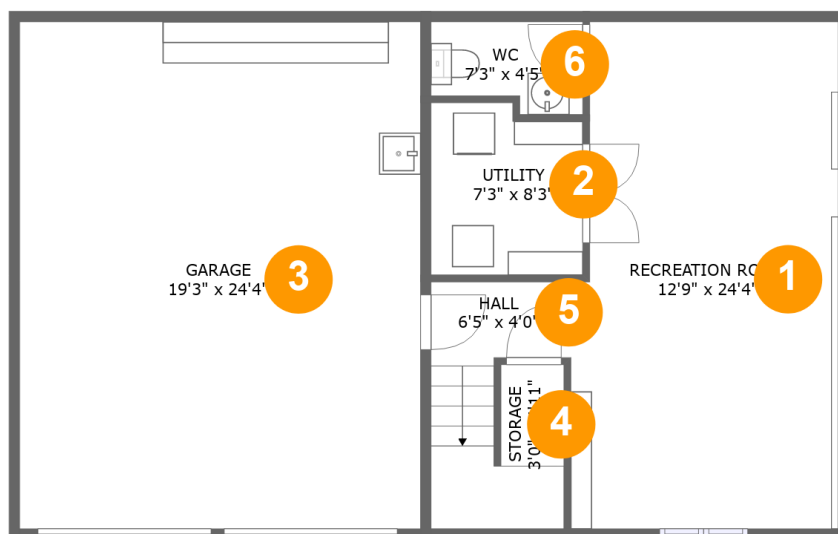
 **1** Half baths

 **2** Floors

 **1,559**
Gross living
area sqft

 **2,357**
Total sqft

12109 Sioux Place, Quince Orchard Manor, Gaithersburg, Montgomery County, Maryland, United



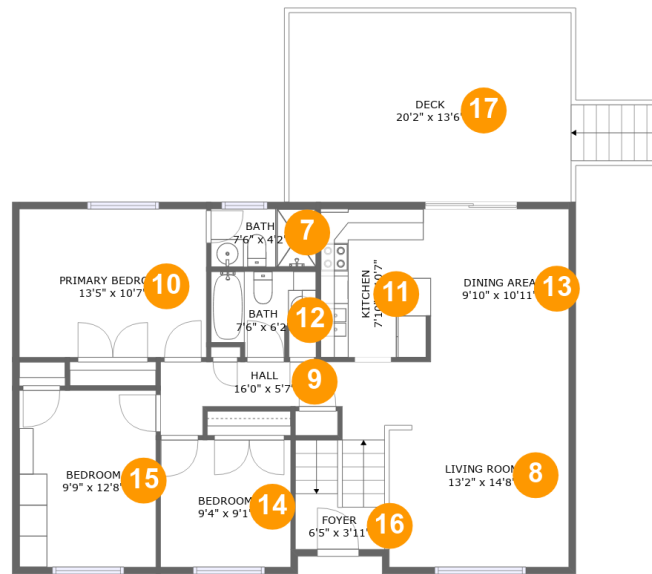
Room dimensions

Floor 1

Total sqft: 1020 Living area: 495

#		Dimensions	sqft	Counted as living area
1	Recreation Room	12'9" x 24'4"	302 sq. ft	Yes
2	Utility	7'3" x 8'3"	57 sq. ft	Yes
3	Garage	19'3" x 24'4"	468 sq. ft	No
4	Storage	3'0" x 4'11"	24 sq. ft	No
5	Hall	6'5" x 4'0"	49 sq. ft	Yes
6	WC	7'3" x 4'5"	29 sq. ft	Yes

12109 Sioux Place, Quince Orchard Manor, Gaithersburg, Montgomery County, Maryland, United



Room dimensions

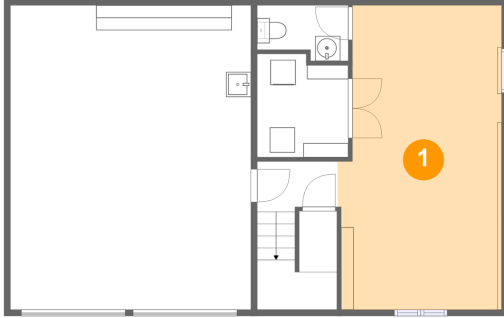
Floor 2

Total sqft: 1337 Living area: 1064

#		Dimensions	sqft	Counted as living area
7	Bath	7'6" x 4'2"	31 sq. ft	Yes
8	Living Room	13'2" x 14'8"	191 sq. ft	Yes
9	Hall	16'0" x 5'7"	89 sq. ft	Yes
10	Primary Bedroom	13'5" x 10'7"	142 sq. ft	Yes
11	Kitchen	7'10" x 10'7"	82 sq. ft	Yes
12	Bath	7'6" x 6'2"	38 sq. ft	Yes
13	Dining Area	9'10" x 10'11"	108 sq. ft	Yes
14	Bedroom	9'4" x 9'1"	85 sq. ft	Yes
15	Bedroom	9'9" x 12'8"	123 sq. ft	Yes
16	Foyer	6'5" x 3'11"	27 sq. ft	Yes
17	Deck	20'2" x 13'6"	273 sq. ft	No

12109 Sioux Place, Quince Orchard Manor, Gaithersburg, Montgomery County, Maryland, United

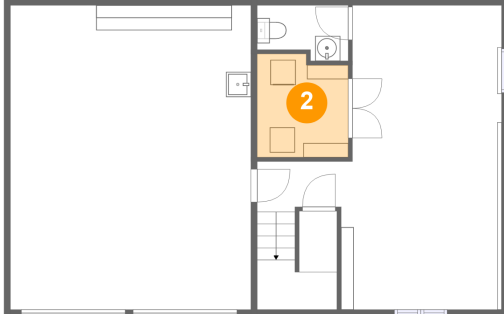
1 Floor 1 - Recreation Room



Dimensions: 12'9" x 24'4"
Area: 302 sq. ft
Counted as living area: Yes

Heated: Yes
Finished: Yes
Enclosed: Yes
Contiguous: Yes
Permitted: Yes
Wet space: No
Addition: No
Conversion: No

2 Floor 1 - Utility

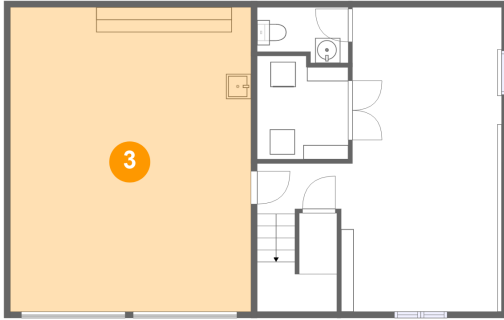


Dimensions: 7'3" x 8'3"
Area: 57 sq. ft
Counted as living area: Yes

Heated: Yes
Finished: Yes
Enclosed: Yes
Contiguous: Yes
Permitted: Yes
Wet space: No
Addition: No
Conversion: No

12109 Sioux Place, Quince Orchard Manor, Gaithersburg, Montgomery County, Maryland, United

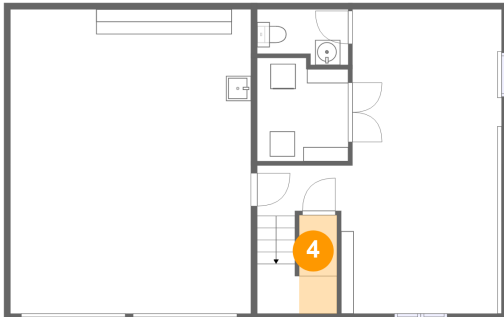
3 Floor 1 - Garage



Dimensions: 19'3" x 24'4"
Area: 468 sq. ft
Counted as living area: No

Heated: No
Finished: No
Enclosed: Yes
Contiguous: Yes
Permitted: Yes
Wet space: No
Addition: No
Conversion: No

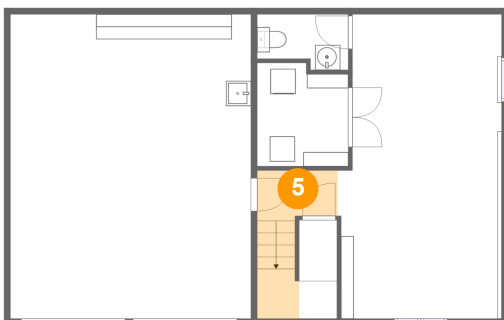
4 Floor 1 - Storage



Dimensions: 3'0" x 4'11"
Area: 24 sq. ft
Counted as living area: No

Heated: No
Finished: Yes
Enclosed: No
Contiguous: Yes
Permitted: Yes
Wet space: No
Addition: No
Conversion: No

5 Floor 1 - Hall

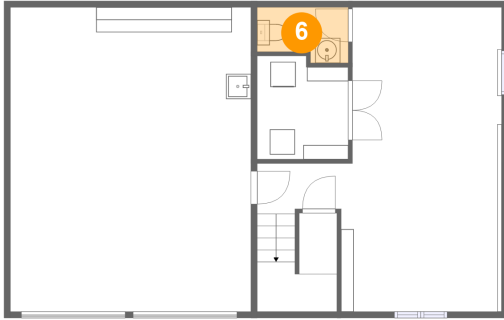


Dimensions: 6'5" x 4'0"
Area: 49 sq. ft
Counted as living area: Yes

Heated: Yes
Finished: Yes
Enclosed: Yes
Contiguous: Yes
Permitted: Yes
Wet space: No
Addition: No
Conversion: No

12109 Sioux Place, Quince Orchard Manor, Gaithersburg, Montgomery County, Maryland, United

6 Floor 1 - WC



Dimensions: 7'3" x 4'5"
Area: 29 sq. ft
Counted as living area: Yes

Heated: Yes
Finished: Yes
Enclosed: Yes
Contiguous: Yes
Permitted: Yes
Wet space: Yes
Addition: No
Conversion: No

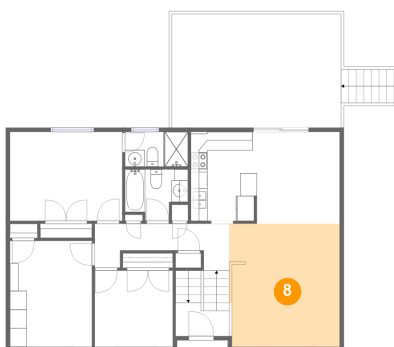
7 Floor 2 - Bath



Dimensions: 7'6" x 4'2"
Area: 31 sq. ft
Counted as living area: Yes

Heated: Yes
Finished: Yes
Enclosed: Yes
Contiguous: Yes
Permitted: Yes
Wet space: Yes
Addition: No
Conversion: No

8 Floor 2 - Living Room

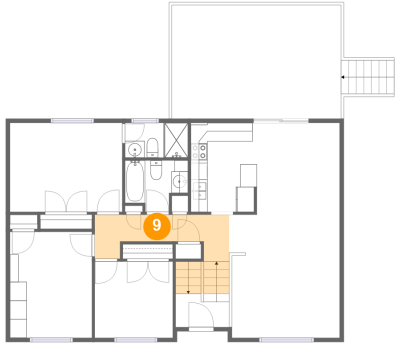


Dimensions: 13'2" x 14'8"
Area: 191 sq. ft
Counted as living area: Yes

Heated: Yes
Finished: Yes
Enclosed: Yes
Contiguous: Yes
Permitted: Yes
Wet space: No
Addition: No
Conversion: No

12109 Sioux Place, Quince Orchard Manor, Gaithersburg, Montgomery County, Maryland, United

9 Floor 2 - Hall



Dimensions: 16'0" x 5'7"
Area: 89 sq. ft
Counted as living area: Yes

Heated: Yes
Finished: Yes
Enclosed: Yes
Contiguous: Yes
Permitted: Yes
Wet space: No
Addition: No
Conversion: No

10 Floor 2 - Primary Bedroom



Dimensions: 13'5" x 10'7"
Area: 142 sq. ft
Counted as living area: Yes

Heated: Yes
Finished: Yes
Enclosed: Yes
Contiguous: Yes
Permitted: Yes
Wet space: No
Addition: No
Conversion: No

11 Floor 2 - Kitchen

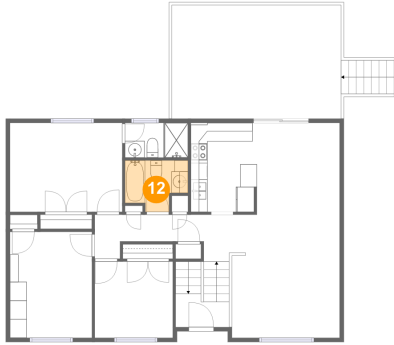


Dimensions: 7'10" x 10'7"
Area: 82 sq. ft
Counted as living area: Yes

Heated: Yes
Finished: Yes
Enclosed: Yes
Contiguous: Yes
Permitted: Yes
Wet space: No
Addition: No
Conversion: No

12109 Sioux Place, Quince Orchard Manor, Gaithersburg, Montgomery County, Maryland, United

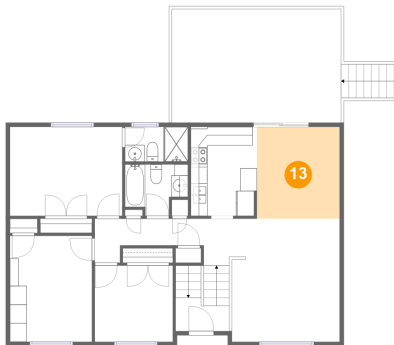
12 Floor 2 - Bath



Dimensions: 7'6" x 6'2"
Area: 38 sq. ft
Counted as living area: Yes

Heated: Yes
Finished: Yes
Enclosed: Yes
Contiguous: Yes
Permitted: Yes
Wet space: Yes
Addition: No
Conversion: No

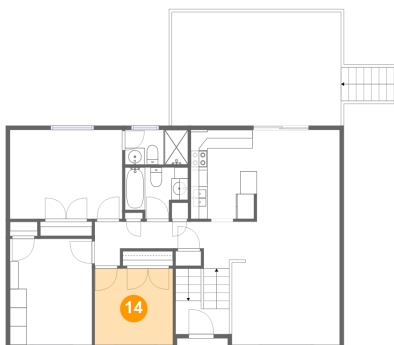
13 Floor 2 - Dining Area



Dimensions: 9'10" x 10'11"
Area: 108 sq. ft
Counted as living area: Yes

Heated: Yes
Finished: Yes
Enclosed: Yes
Contiguous: Yes
Permitted: Yes
Wet space: No
Addition: No
Conversion: No

14 Floor 2 - Bedroom



Dimensions: 9'4" x 9'1"
Area: 85 sq. ft
Counted as living area: Yes

Heated: Yes
Finished: Yes
Enclosed: Yes
Contiguous: Yes
Permitted: Yes
Wet space: No
Addition: No
Conversion: No

12109 Sioux Place, Quince Orchard Manor, Gaithersburg, Montgomery County, Maryland, United

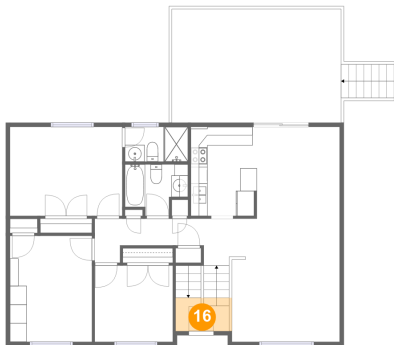
15 Floor 2 - Bedroom



Dimensions: 9'9" x 12'8"
Area: 123 sq. ft
Counted as living area: Yes

Heated: Yes
Finished: Yes
Enclosed: Yes
Contiguous: Yes
Permitted: Yes
Wet space: No
Addition: No
Conversion: No

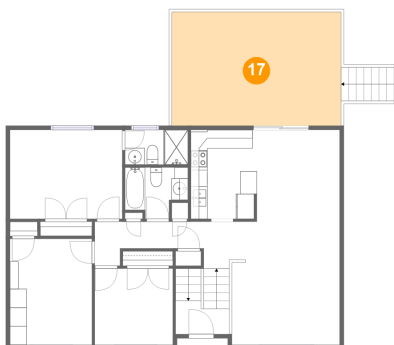
16 Floor 2 - Foyer



Dimensions: 6'5" x 3'11"
Area: 27 sq. ft
Counted as living area: Yes

Heated: Yes
Finished: Yes
Enclosed: Yes
Contiguous: Yes
Permitted: Yes
Wet space: No
Addition: No
Conversion: No

17 Floor 2 - Deck



Dimensions: 20'2" x 13'6"
Area: 273 sq. ft
Counted as living area: No

Heated: No
Finished: Yes
Enclosed: No
Contiguous: Yes
Permitted: Yes
Wet space: No
Addition: No
Conversion: No