

Home report

9441 Holbrook Lane, Potomac, Montgomery County, Maryland,
United States, 20854



Total Area: 3400 sq. ft
Floor 1: 968 sq. ft, Floor 2: 1755 sq. ft, Floor 3: 677 sq. ft
Excluded: Utility 185 sq. ft, Deck 165 sq. ft, Walls: 236 sq. ft

Property summary

 **3** Floors

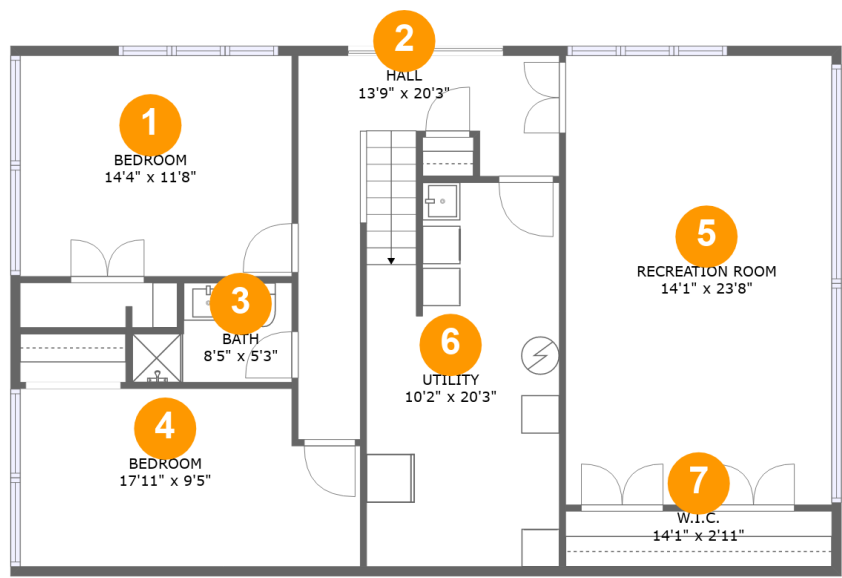
 **6** Bedrooms

 **3** Bathrooms

 **1** Half baths

Home report

9441 Holbrook Lane, Potomac, Montgomery County, Maryland,
United States, 20854



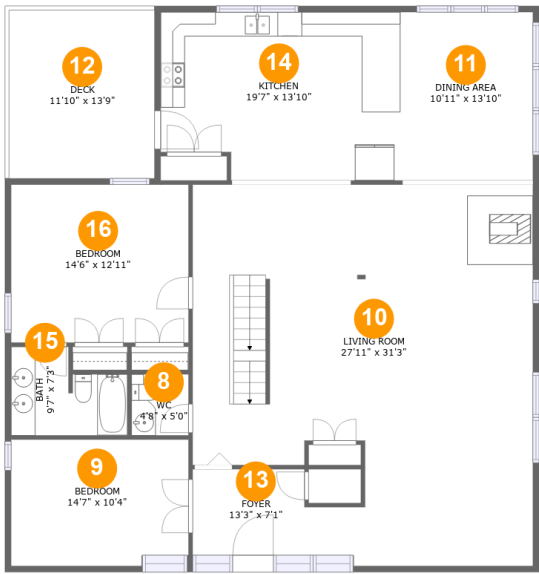
Room dimensions

Floor 1 Total:968sqft Excluded: 185sqft

#		Max Dimensions	sqft	Included
1	Bedroom	14'4" x 11'8"	167 sq. ft	Yes
2	Hall	13'9" x 20'3"	145 sq. ft	Yes
3	Bath	8'5" x 5'3"	37 sq. ft	Yes
4	Bedroom	17'11" x 9'5"	157 sq. ft	Yes
5	Recreation Room	14'1" x 23'8"	333 sq. ft	Yes
6	Utility	10'2" x 20'3"	185 sq. ft	No
7	W.I.C.	14'1" x 2'11"	41 sq. ft	Yes

Home report

9441 Holbrook Lane, Potomac, Montgomery County, Maryland,
United States, 20854



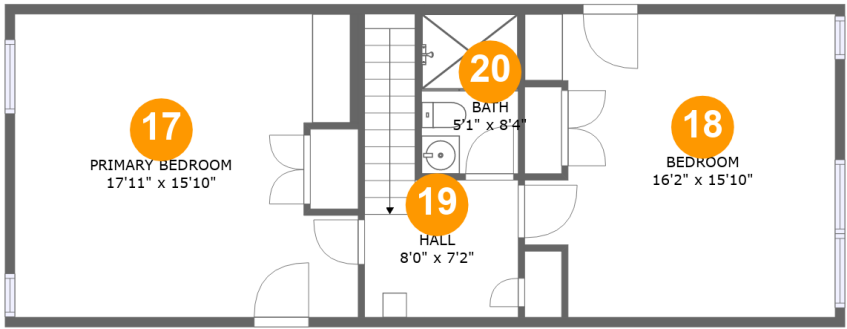
Room dimensions

Floor 2 Total:1755sqft Excluded: 165sqft

#		Max Dimensions	sqft	Included
8	WC	4'8" x 5'0"	23 sq. ft	Yes
9	Bedroom	14'7" x 10'4"	148 sq. ft	Yes
10	Living Room	27'11" x 31'3"	750 sq. ft	Yes
11	Dining Area	10'11" x 13'10"	150 sq. ft	Yes
12	Deck	11'10" x 13'9"	165 sq. ft	No
13	Foyer	13'3" x 7'1"	81 sq. ft	Yes
14	Kitchen	19'7" x 13'10"	258 sq. ft	Yes
15	Bath	9'7" x 7'3"	58 sq. ft	Yes
16	Bedroom	14'6" x 12'11"	189 sq. ft	Yes

Home report

9441 Holbrook Lane, Potomac, Montgomery County, Maryland,
United States, 20854

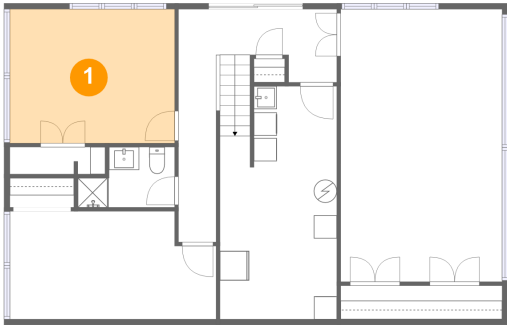


Room dimensions

Floor 3 Total:677sqft Excluded: 0sqft

#		Max Dimensions	sqft	Included
17	Primary Bedroom	17'11" x 15'10"	270 sq. ft	Yes
18	Bedroom	16'2" x 15'10"	228 sq. ft	Yes
19	Hall	8'0" x 7'2"	57 sq. ft	Yes
20	Bath	5'1" x 8'4"	42 sq. ft	Yes

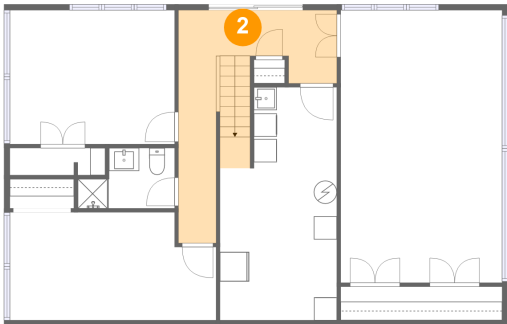
1 Floor 1 - Bedroom



Max Dimensions: 14'4" x 11'8"
Calculated Area: 167 sq. ft
Included: Yes

Heated: Yes
Finished: Yes
Enclosed: Yes
Contiguous: Yes
Permitted: Yes
Wet space: No
Addition: No
Conversion: No

2 Floor 1 - Hall



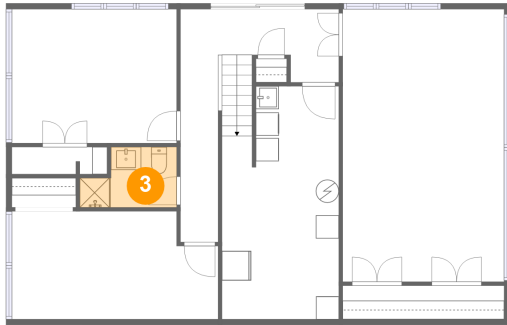
Max Dimensions: 13'9" x 20'3"
Calculated Area: 145 sq. ft
Included: Yes

Heated: Yes
Finished: Yes
Enclosed: Yes
Contiguous: Yes
Permitted: Yes
Wet space: No
Addition: No
Conversion: No

Home report

9441 Holbrook Lane, Potomac, Montgomery County, Maryland,
United States, 20854

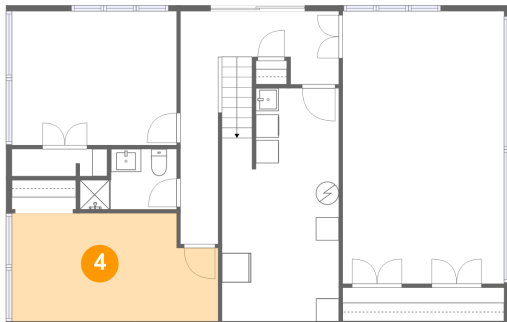
3 Floor 1 - Bath



Max Dimensions: 8'5" x 5'3"
Calculated Area: 37 sq. ft
Included: Yes

Heated: Yes
Finished: Yes
Enclosed: Yes
Contiguous: Yes
Permitted: Yes
Wet space: Yes
Addition: No
Conversion: No

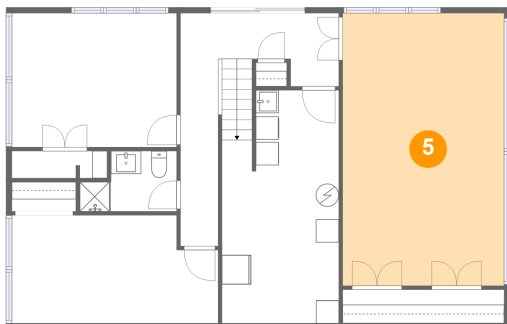
4 Floor 1 - Bedroom



Max Dimensions: 17'11" x 9'5"
Calculated Area: 157 sq. ft
Included: Yes

Heated: Yes
Finished: Yes
Enclosed: Yes
Contiguous: Yes
Permitted: Yes
Wet space: No
Addition: No
Conversion: No

5 Floor 1 - Recreation Room

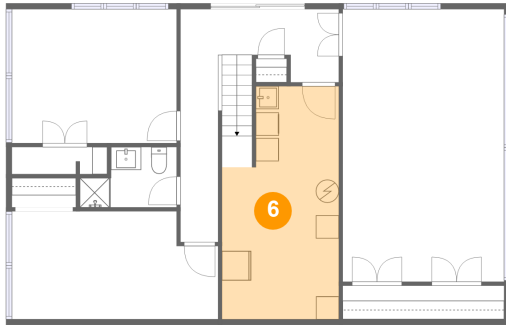


Max Dimensions: 14'1" x 23'8"
Calculated Area: 333 sq. ft
Included: Yes

Heated: Yes
Finished: Yes
Enclosed: Yes
Contiguous: Yes
Permitted: Yes
Wet space: No
Addition: No
Conversion: No

9441 Holbrook Lane, Potomac, Montgomery County, Maryland,
United States, 20854

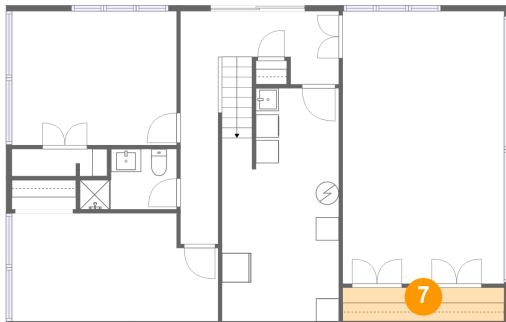
6 Floor 1 - Utility



Max Dimensions: 10'2" x 20'3"
Calculated Area: 185 sq. ft
Included: No

Heated: Yes
Finished: No
Enclosed: Yes
Contiguous: Yes
Permitted: Yes
Wet space: No
Addition: No
Conversion: No

7 Floor 1 - W.I.C.



Max Dimensions: 14'1" x 2'11"
Calculated Area: 41 sq. ft
Included: Yes

Heated: Yes
Finished: Yes
Enclosed: Yes
Contiguous: Yes
Permitted: Yes
Wet space: No
Addition: No
Conversion: No

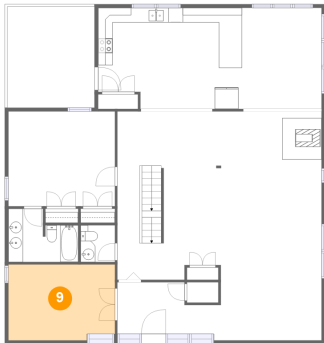
8 Floor 2 - WC



Max Dimensions: 4'8" x 5'0"
Calculated Area: 23 sq. ft
Included: Yes

Heated: Yes
Finished: Yes
Enclosed: Yes
Contiguous: Yes
Permitted: Yes
Wet space: Yes
Addition: No
Conversion: No

9 Floor 2 - Bedroom



Max Dimensions: 14'7" x 10'4"
Calculated Area: 148 sq. ft
Included: Yes

Heated: Yes
Finished: Yes
Enclosed: Yes
Contiguous: Yes
Permitted: Yes
Wet space: No
Addition: No
Conversion: No

10 Floor 2 - Living Room



Max Dimensions: 27'11" x 31'3"
Calculated Area: 750 sq. ft
Included: Yes

Heated: Yes
Finished: Yes
Enclosed: Yes
Contiguous: Yes
Permitted: Yes
Wet space: No
Addition: No
Conversion: No

11 Floor 2 - Dining Area



Max Dimensions: 10'11" x 13'10"
Calculated Area: 150 sq. ft
Included: Yes

Heated: Yes
Finished: Yes
Enclosed: Yes
Contiguous: Yes
Permitted: Yes
Wet space: No
Addition: No
Conversion: No

12 Floor 2 - Deck



Max Dimensions: 11'10" x 13'9"
Calculated Area: 165 sq. ft
Included: No

Heated: No
Finished: Yes
Enclosed: No
Contiguous: Yes
Permitted: Yes
Wet space: No
Addition: No
Conversion: No

13 Floor 2 - Foyer



Max Dimensions: 13'3" x 7'1"
Calculated Area: 81 sq. ft
Included: Yes

Heated: Yes
Finished: Yes
Enclosed: Yes
Contiguous: Yes
Permitted: Yes
Wet space: No
Addition: No
Conversion: No

14 Floor 2 - Kitchen

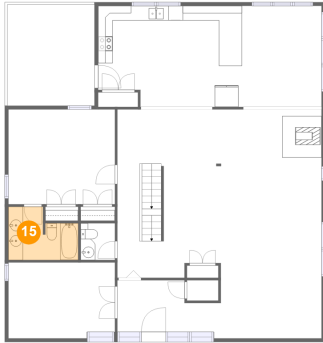


Max Dimensions: 19'7" x 13'10"
Calculated Area: 258 sq. ft
Included: Yes

Heated: Yes
Finished: Yes
Enclosed: Yes
Contiguous: Yes
Permitted: Yes
Wet space: No
Addition: No
Conversion: No

9441 Holbrook Lane, Potomac, Montgomery County, Maryland,
United States, 20854

15 Floor 2 - Bath



Max Dimensions: 9'7" x 7'3"
Calculated Area: 58 sq. ft
Included: Yes

Heated: Yes
Finished: Yes
Enclosed: Yes
Contiguous: Yes
Permitted: Yes
Wet space: Yes
Addition: No
Conversion: No

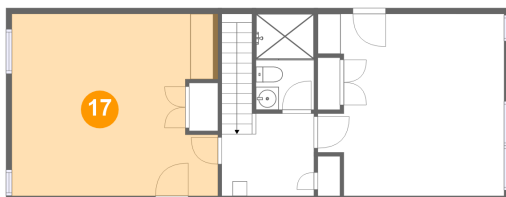
16 Floor 2 - Bedroom



Max Dimensions: 14'6" x 12'11"
Calculated Area: 189 sq. ft
Included: Yes

Heated: Yes
Finished: Yes
Enclosed: Yes
Contiguous: Yes
Permitted: Yes
Wet space: No
Addition: No
Conversion: No

17 Floor 3 - Primary Bedroom



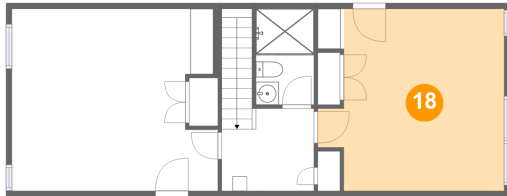
Max Dimensions: 17'11" x 15'10"
Calculated Area: 270 sq. ft
Included: Yes

Heated: Yes
Finished: Yes
Enclosed: Yes
Contiguous: Yes
Permitted: Yes
Wet space: No
Addition: No
Conversion: No

Home report

9441 Holbrook Lane, Potomac, Montgomery County, Maryland,
United States, 20854

18 Floor 3 - Bedroom



Max Dimensions: 16'2" x 15'10"
Calculated Area: 228 sq. ft
Included: Yes

Heated: Yes
Finished: Yes
Enclosed: Yes
Contiguous: Yes
Permitted: Yes
Wet space: No
Addition: No
Conversion: No

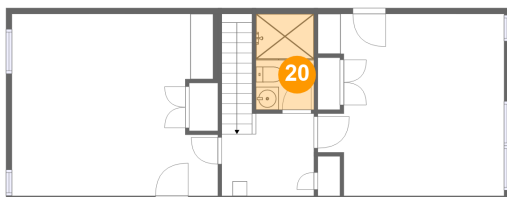
19 Floor 3 - Hall



Max Dimensions: 8'0" x 7'2"
Calculated Area: 57 sq. ft
Included: Yes

Heated: Yes
Finished: Yes
Enclosed: Yes
Contiguous: Yes
Permitted: Yes
Wet space: No
Addition: No
Conversion: No

20 Floor 3 - Bath



Max Dimensions: 5'1" x 8'4"
Calculated Area: 42 sq. ft
Included: Yes

Heated: Yes
Finished: Yes
Enclosed: Yes
Contiguous: Yes
Permitted: Yes
Wet space: Yes
Addition: No
Conversion: No