

Home report

2800 Lake Hollow Road, Berthoud, Larimer County, Colorado,  
United States, 80513



Total Area: 2933 sq. ft

Floor 1: 1114 sq. ft, Floor 2: 1087 sq. ft, Floor 3: 732 sq. ft

Excluded: Fireplace 34 sq. ft, Outdoor Porch 279 sq. ft, Outdoor Patio 739 sq. ft, Outdoor  
Patio Covered 105 sq. ft

Property summary

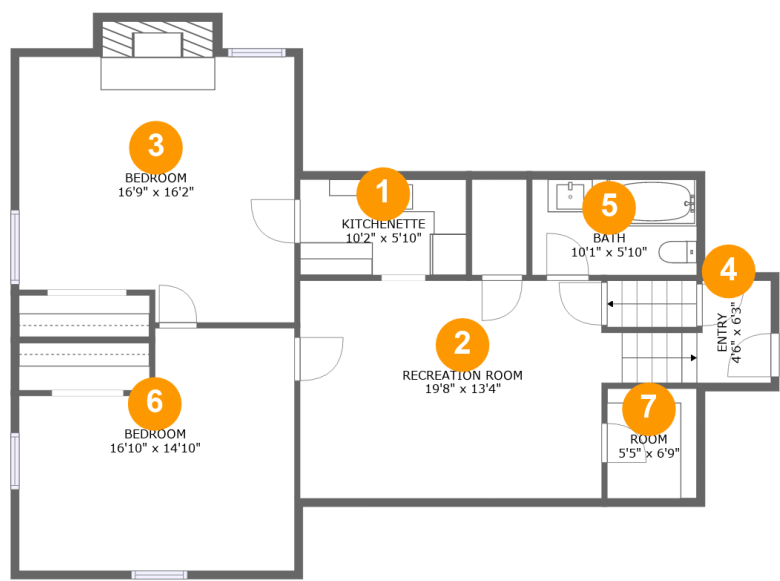
 **3** Floors

 **5** Bedrooms

 **3** Bathrooms

Home report

2800 Lake Hollow Road, Berthoud, Larimer County, Colorado,  
United States, 80513



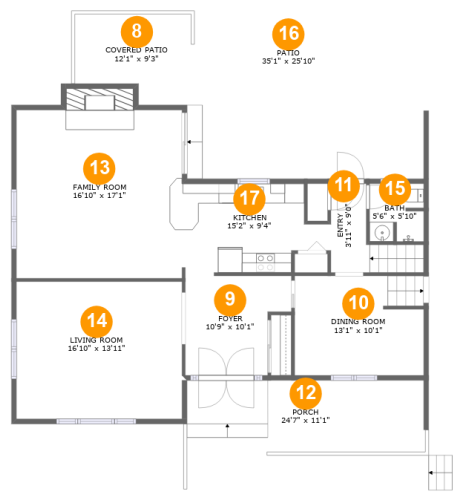
Room dimensions

Floor 1 Total:1114sqft    Excluded: 17sqft

#		Max Dimensions	sqft	Included
1	Kitchenette	10'2" x 5'10"	59 sq. ft	Yes
2	Recreation Room	19'8" x 13'4"	263 sq. ft	Yes
3	Bedroom	16'9" x 16'2"	272 sq. ft	Yes
4	Entry	4'6" x 6'3"	27 sq. ft	Yes
5	Bath	10'1" x 5'10"	59 sq. ft	Yes
6	Bedroom	16'10" x 14'10"	215 sq. ft	Yes
7	Room	5'5" x 6'9"	37 sq. ft	Yes

Home report

2800 Lake Hollow Road, Berthoud, Larimer County, Colorado,  
United States, 80513



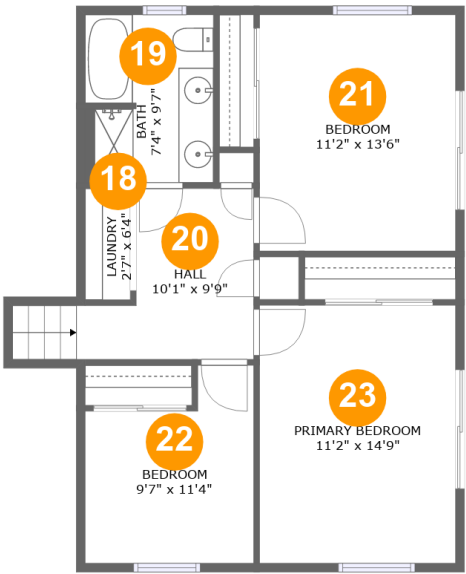
Room dimensions

Floor 2 Total:1087sqft   Excluded: 1140sqft

#		Max Dimensions	sqft	Included
8	Covered Patio	12'1" x 9'3"	105 sq. ft	No
9	Foyer	10'9" x 10'1"	94 sq. ft	Yes
10	Dining Room	13'1" x 10'1"	131 sq. ft	Yes
11	Entry	3'11" x 9'0"	49 sq. ft	Yes
12	Porch	24'7" x 11'1"	279 sq. ft	No
13	Family Room	16'10" x 17'1"	303 sq. ft	Yes
14	Living Room	16'10" x 13'11"	235 sq. ft	Yes
15	Bath	5'6" x 5'10"	31 sq. ft	Yes
16	Patio	35'1" x 25'10"	739 sq. ft	No
17	Kitchen	15'2" x 9'4"	117 sq. ft	Yes

Home report

2800 Lake Hollow Road, Berthoud, Larimer County, Colorado,  
United States, 80513



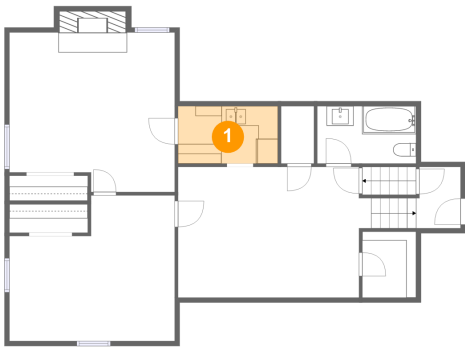
Room dimensions

Floor 3 Total:732sqft   Excluded: 0sqft

#		Max Dimensions	sqft	Included
18	Laundry	2'7" x 6'4"	16 sq. ft	Yes
19	Bath	7'4" x 9'7"	69 sq. ft	Yes
20	Hall	10'1" x 9'9"	87 sq. ft	Yes
21	Bedroom	11'2" x 13'6"	151 sq. ft	Yes
22	Bedroom	9'7" x 11'4"	92 sq. ft	Yes
23	Primary Bedroom	11'2" x 14'9"	165 sq. ft	Yes

2800 Lake Hollow Road, Berthoud, Larimer County, Colorado,  
United States, 80513

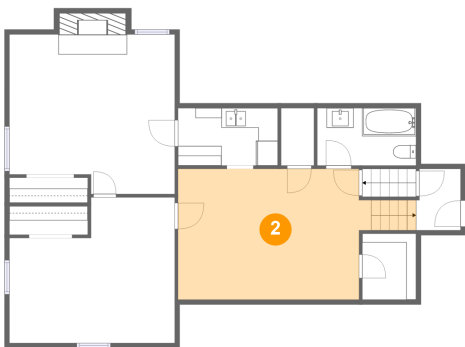
1 Floor 1 - Kitchenette



Max Dimensions: 10'2" x 5'10"  
Calculated Area: 59 sq. ft  
Included: Yes

Heated: Yes  
Finished: Yes  
Enclosed: Yes  
Contiguous: Yes  
Permitted: Yes  
Wet space: No  
Addition: No  
Conversion: No

2 Floor 1 - Recreation Room



Max Dimensions: 19'8" x 13'4"  
Calculated Area: 263 sq. ft  
Included: Yes

Heated: Yes  
Finished: Yes  
Enclosed: Yes  
Contiguous: Yes  
Permitted: Yes  
Wet space: No  
Addition: No  
Conversion: No

## Home report

2800 Lake Hollow Road, Berthoud, Larimer County, Colorado,  
United States, 80513

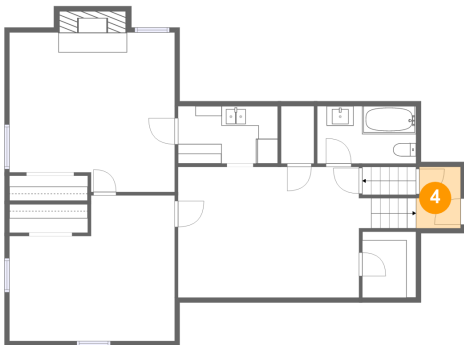
### 3 Floor 1 - Bedroom



Max Dimensions: 16'9" x 16'2"  
Calculated Area: 272 sq. ft  
Included: Yes

Heated: Yes  
Finished: Yes  
Enclosed: Yes  
Contiguous: Yes  
Permitted: Yes  
Wet space: No  
Addition: No  
Conversion: No

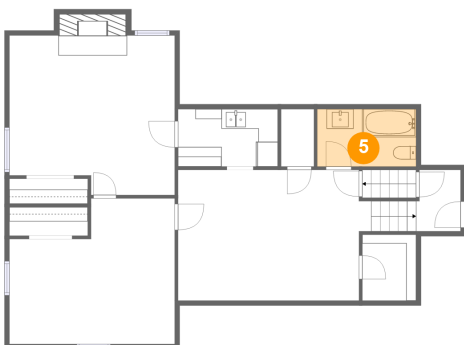
### 4 Floor 1 - Entry



Max Dimensions: 4'6" x 6'3"  
Calculated Area: 27 sq. ft  
Included: Yes

Heated: Yes  
Finished: Yes  
Enclosed: Yes  
Contiguous: Yes  
Permitted: Yes  
Wet space: No  
Addition: No  
Conversion: No

### 5 Floor 1 - Bath



Max Dimensions: 10'1" x 5'10"  
Calculated Area: 59 sq. ft  
Included: Yes

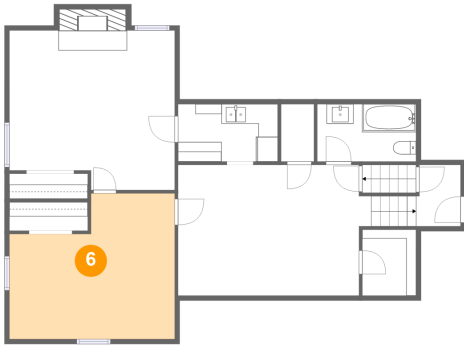
Heated: Yes  
Finished: Yes  
Enclosed: Yes  
Contiguous: Yes  
Permitted: Yes  
Wet space: Yes  
Addition: No  
Conversion: No

## Home report

2800 Lake Hollow Road, Berthoud, Larimer County, Colorado,  
United States, 80513

### 6 Floor 1 - Bedroom

---

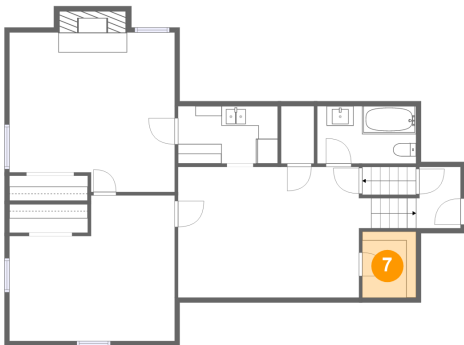


Max Dimensions: 16'10" x 14'10"  
Calculated Area: 215 sq. ft  
Included: Yes

Heated: Yes  
Finished: Yes  
Enclosed: Yes  
Contiguous: Yes  
Permitted: Yes  
Wet space: No  
Addition: No  
Conversion: No

### 7 Floor 1 - Room

---

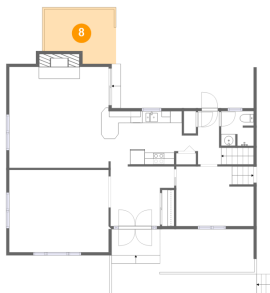


Max Dimensions: 5'5" x 6'9"  
Calculated Area: 37 sq. ft  
Included: Yes

Heated: Yes  
Finished: Yes  
Enclosed: Yes  
Contiguous: Yes  
Permitted: Yes  
Wet space: No  
Addition: No  
Conversion: No

### 8 Floor 2 - Covered Patio

---

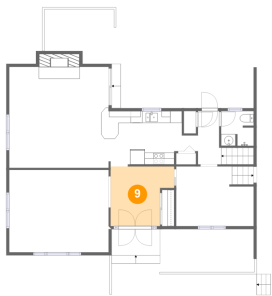


Max Dimensions: 12'1" x 9'3"  
Calculated Area: 105 sq. ft  
Included: No

Heated: No  
Finished: Yes  
Enclosed: No  
Contiguous: Yes  
Permitted: Yes  
Wet space: No  
Addition: No  
Conversion: No

2800 Lake Hollow Road, Berthoud, Larimer County, Colorado,  
United States, 80513

9 Floor 2 - Foyer



Max Dimensions: 10'9" x 10'1"  
Calculated Area: 94 sq. ft  
Included: Yes

Heated: Yes  
Finished: Yes  
Enclosed: Yes  
Contiguous: Yes  
Permitted: Yes  
Wet space: No  
Addition: No  
Conversion: No

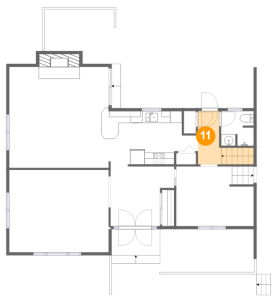
10 Floor 2 - Dining Room



Max Dimensions: 13'1" x 10'1"  
Calculated Area: 131 sq. ft  
Included: Yes

Heated: Yes  
Finished: Yes  
Enclosed: Yes  
Contiguous: Yes  
Permitted: Yes  
Wet space: No  
Addition: No  
Conversion: No

11 Floor 2 - Entry

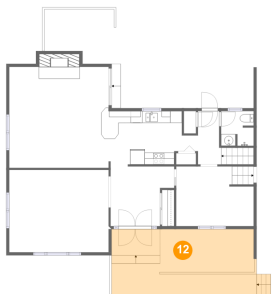


Max Dimensions: 3'11" x 9'0"  
Calculated Area: 49 sq. ft  
Included: Yes

Heated: Yes  
Finished: Yes  
Enclosed: Yes  
Contiguous: Yes  
Permitted: Yes  
Wet space: No  
Addition: No  
Conversion: No

2800 Lake Hollow Road, Berthoud, Larimer County, Colorado,  
United States, 80513

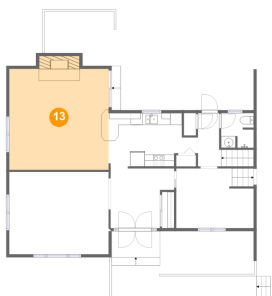
12 Floor 2 - Porch



Max Dimensions: 24'7" x 11'1"  
Calculated Area: 279 sq. ft  
Included: No

Heated: No  
Finished: Yes  
Enclosed: No  
Contiguous: Yes  
Permitted: Yes  
Wet space: No  
Addition: No  
Conversion: No

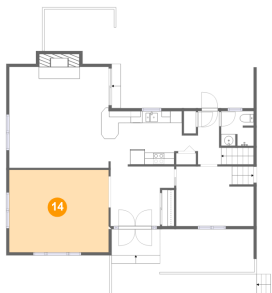
13 Floor 2 - Family Room



Max Dimensions: 16'10" x 17'1"  
Calculated Area: 303 sq. ft  
Included: Yes

Heated: Yes  
Finished: Yes  
Enclosed: Yes  
Contiguous: Yes  
Permitted: Yes  
Wet space: No  
Addition: No  
Conversion: No

14 Floor 2 - Living Room

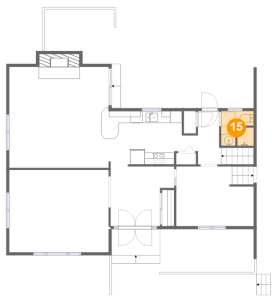


Max Dimensions: 16'10" x 13'11"  
Calculated Area: 235 sq. ft  
Included: Yes

Heated: Yes  
Finished: Yes  
Enclosed: Yes  
Contiguous: Yes  
Permitted: Yes  
Wet space: No  
Addition: No  
Conversion: No

2800 Lake Hollow Road, Berthoud, Larimer County, Colorado,  
United States, 80513

15 Floor 2 - Bath



Max Dimensions: 5'6" x 5'10"  
Calculated Area: 31 sq. ft  
Included: Yes

Heated: Yes  
Finished: Yes  
Enclosed: Yes  
Contiguous: Yes  
Permitted: Yes  
Wet space: Yes  
Addition: No  
Conversion: No

16 Floor 2 - Patio



Max Dimensions: 35'1" x 25'10"  
Calculated Area: 739 sq. ft  
Included: No

Heated: No  
Finished: Yes  
Enclosed: No  
Contiguous: Yes  
Permitted: Yes  
Wet space: No  
Addition: No  
Conversion: No

17 Floor 2 - Kitchen

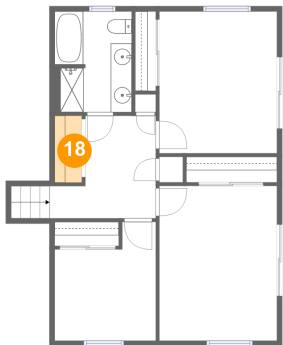


Max Dimensions: 15'2" x 9'4"  
Calculated Area: 117 sq. ft  
Included: Yes

Heated: Yes  
Finished: Yes  
Enclosed: Yes  
Contiguous: Yes  
Permitted: Yes  
Wet space: No  
Addition: No  
Conversion: No

2800 Lake Hollow Road, Berthoud, Larimer County, Colorado,  
United States, 80513

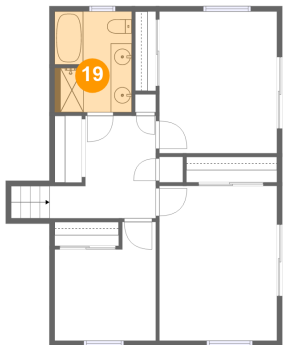
18 Floor 3 - Laundry



Max Dimensions: 2'7" x 6'4"  
Calculated Area: 16 sq. ft  
Included: Yes

Heated: Yes  
Finished: Yes  
Enclosed: Yes  
Contiguous: Yes  
Permitted: Yes  
Wet space: No  
Addition: No  
Conversion: No

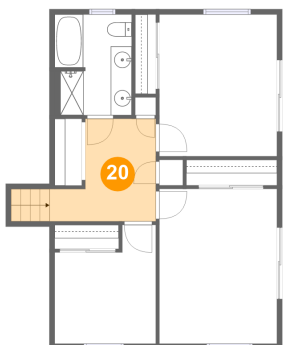
19 Floor 3 - Bath



Max Dimensions: 7'4" x 9'7"  
Calculated Area: 69 sq. ft  
Included: Yes

Heated: Yes  
Finished: Yes  
Enclosed: Yes  
Contiguous: Yes  
Permitted: Yes  
Wet space: Yes  
Addition: No  
Conversion: No

20 Floor 3 - Hall

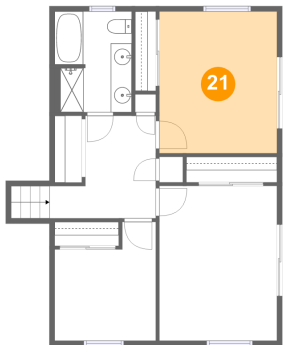


Max Dimensions: 10'1" x 9'9"  
Calculated Area: 87 sq. ft  
Included: Yes

Heated: Yes  
Finished: Yes  
Enclosed: Yes  
Contiguous: Yes  
Permitted: Yes  
Wet space: No  
Addition: No  
Conversion: No

2800 Lake Hollow Road, Berthoud, Larimer County, Colorado,  
United States, 80513

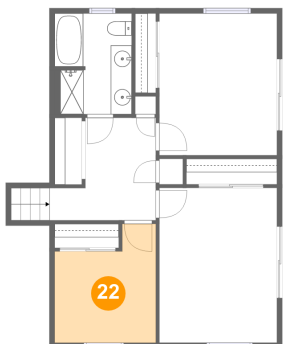
21 Floor 3 - Bedroom



Max Dimensions: 11'2" x 13'6"  
Calculated Area: 151 sq. ft  
Included: Yes

Heated: Yes  
Finished: Yes  
Enclosed: Yes  
Contiguous: Yes  
Permitted: Yes  
Wet space: No  
Addition: No  
Conversion: No

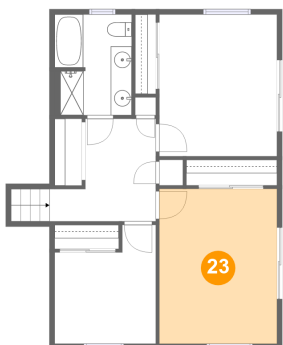
22 Floor 3 - Bedroom



Max Dimensions: 9'7" x 11'4"  
Calculated Area: 92 sq. ft  
Included: Yes

Heated: Yes  
Finished: Yes  
Enclosed: Yes  
Contiguous: Yes  
Permitted: Yes  
Wet space: No  
Addition: No  
Conversion: No

23 Floor 3 - Primary Bedroom



Max Dimensions: 11'2" x 14'9"  
Calculated Area: 165 sq. ft  
Included: Yes

Heated: Yes  
Finished: Yes  
Enclosed: Yes  
Contiguous: Yes  
Permitted: Yes  
Wet space: No  
Addition: No  
Conversion: No