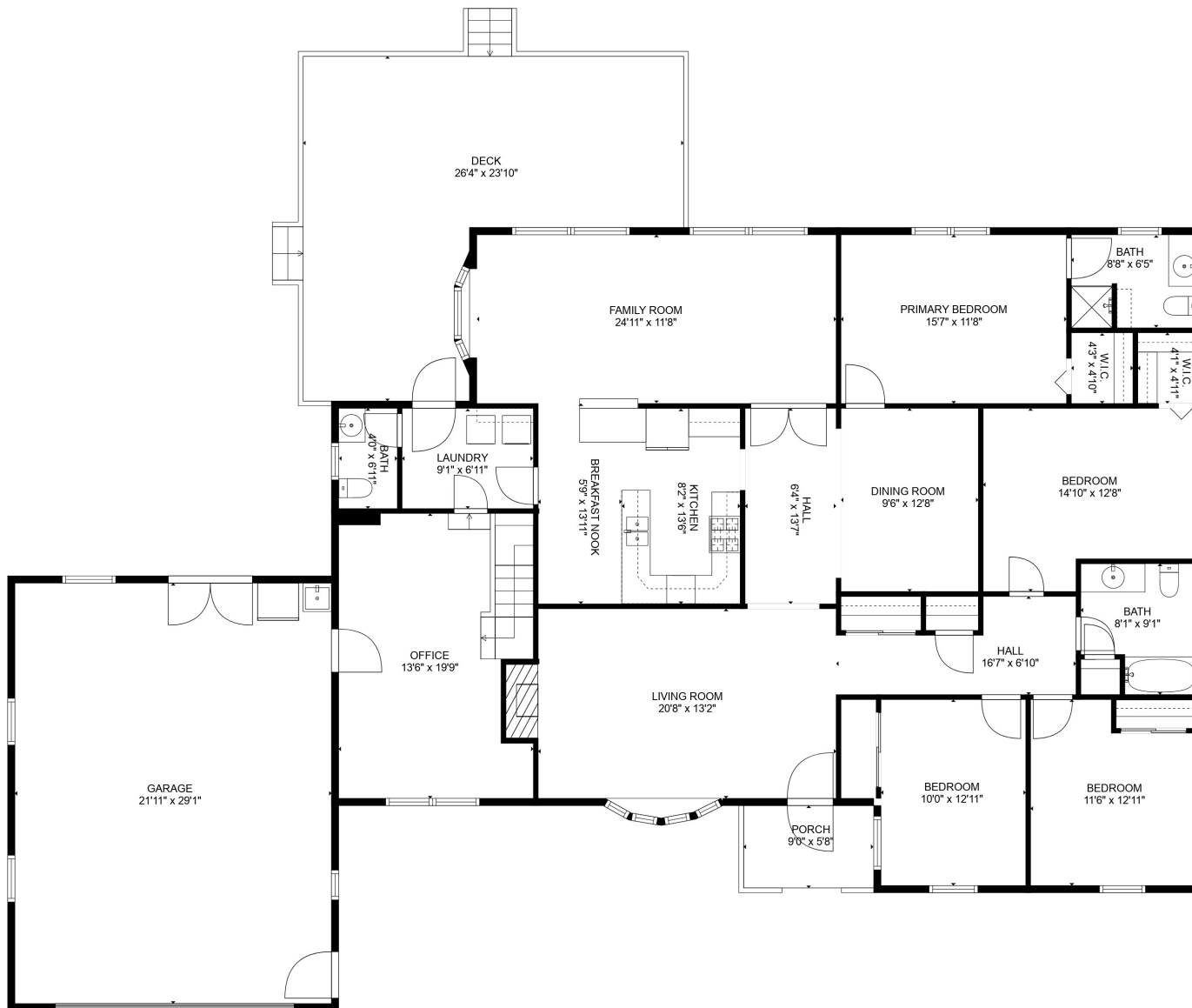


TOTAL: 2358 sq. ft
 BELOW GROUND: 14 sq. ft, FLOOR 2: 2344 sq. ft
 EXCLUDED AREAS: BASEMENT: 535 sq. ft, LOW CEILING: 638 sq. ft, GARAGE: 638 sq. ft,
 PORCH: 51 sq. ft, DECK: 444 sq. ft, BAY WINDOW: 7 sq. ft

SIZES AND DIMENSIONS ARE APPROXIMATE, ACTUAL MAY VARY.





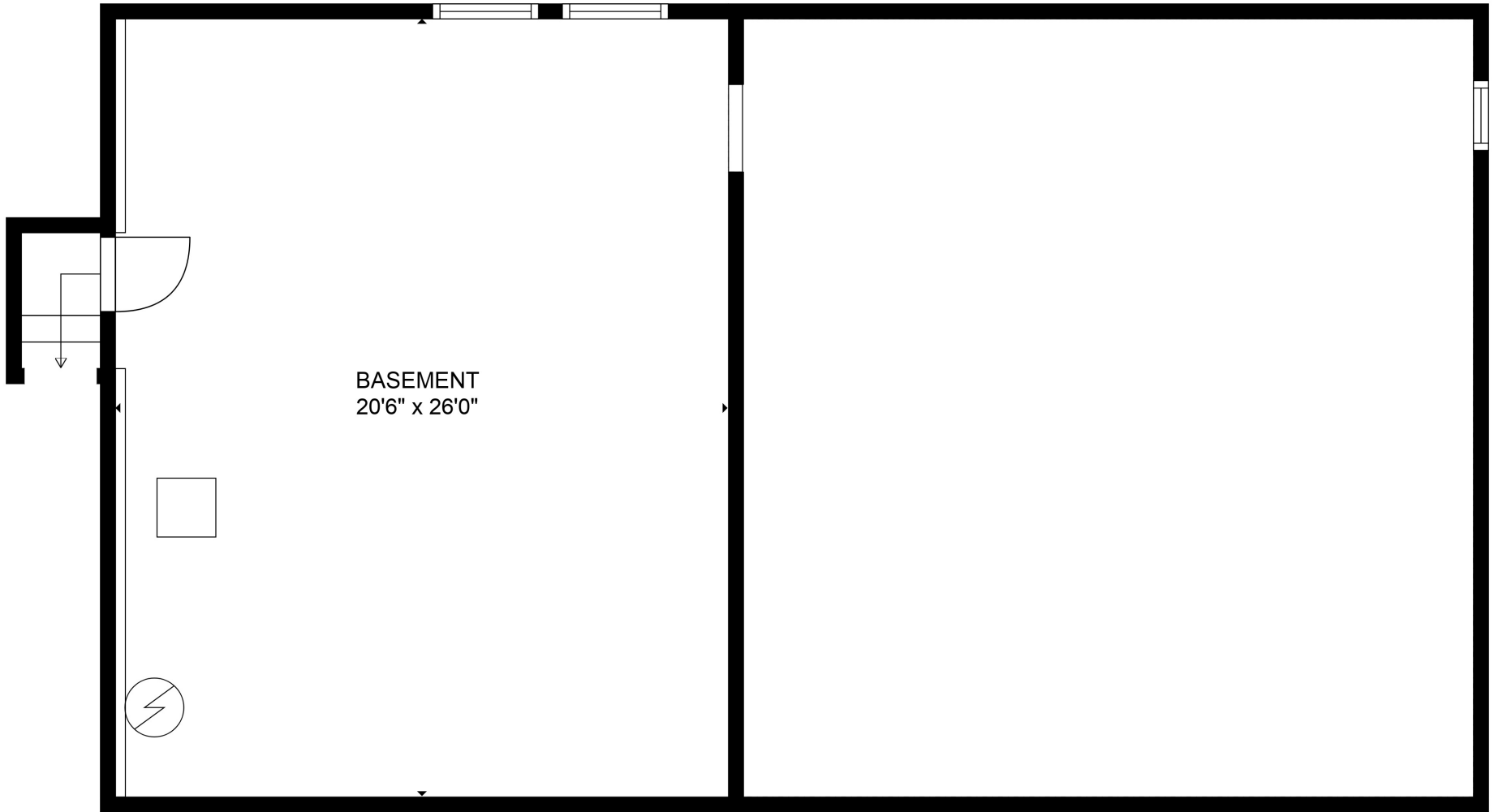
TOTAL: 2358 sq. ft

BELOW GROUND: 14 sq. ft, FLOOR 2: 2344 sq. ft

EXCLUDED AREAS: BASEMENT: 535 sq. ft, LOW CEILING: 638 sq. ft, GARAGE: 638 sq. ft,
 PORCH: 51 sq. ft, DECK: 444 sq. ft, BAY WINDOW: 7 sq. ft

SIZES AND DIMENSIONS ARE APPROXIMATE, ACTUAL MAY VARY.





TOTAL: 2358 sq. ft
BELOW GROUND: 14 sq. ft, FLOOR 2: 2344 sq. ft
EXCLUDED AREAS: BASEMENT: 535 sq. ft, LOW CEILING: 638 sq. ft, GARAGE: 638 sq. ft,
PORCH: 51 sq. ft, DECK: 444 sq. ft, BAY WINDOW: 7 sq. ft

SIZES AND DIMENSIONS ARE APPROXIMATE, ACTUAL MAY VARY.