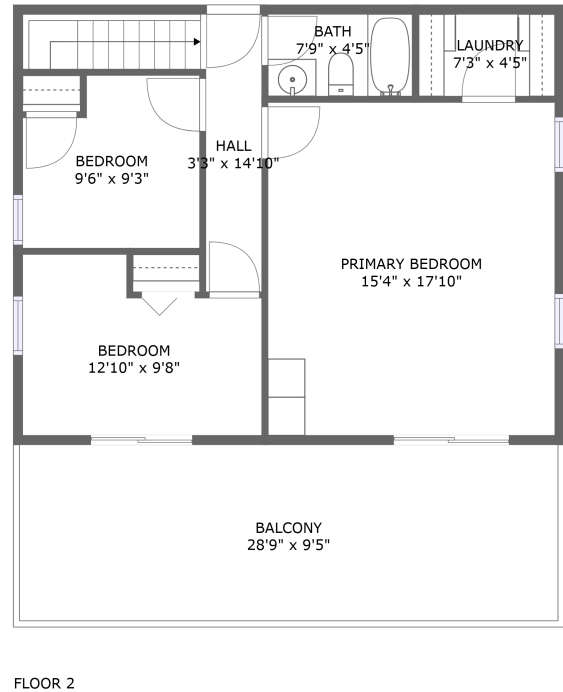
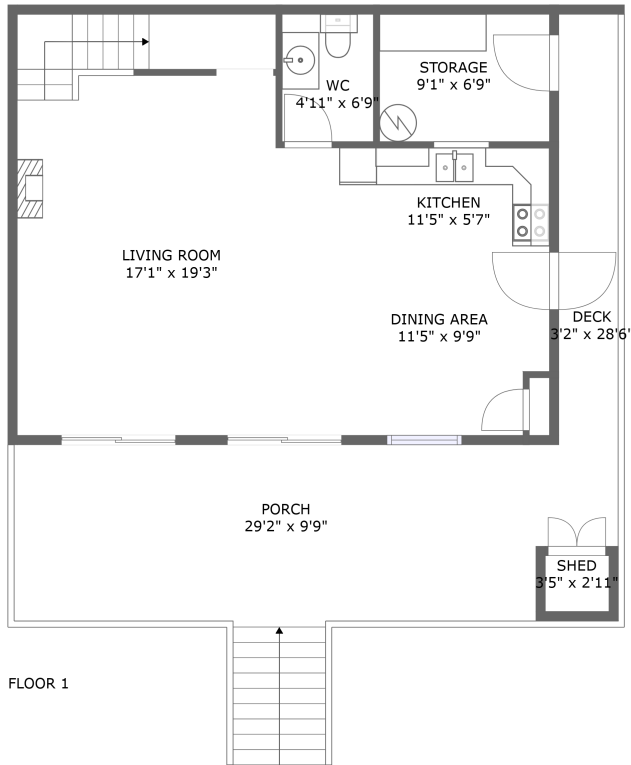



# 2057 Locke's Mill Road, Lockes Landing, Berryville, Clarke County, Virginia, United States, 22611



## Property summary


 **0** Garages

 **3** Bedrooms

 **1** Bathrooms

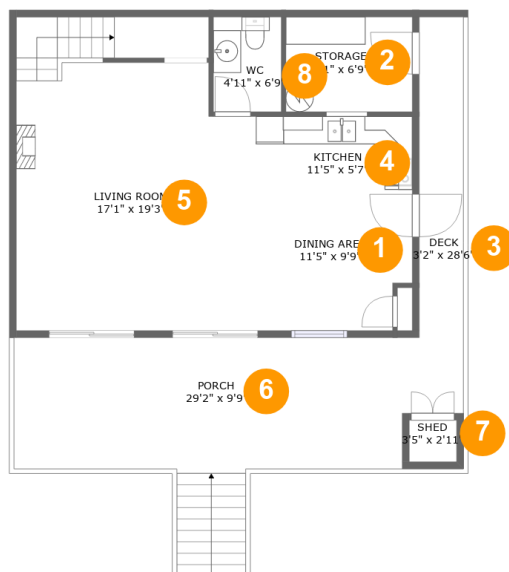
 **1** Half baths

 **2** Floors

 **1,318** Gross living area sqft

 **2,082** Total sqft

# 2057 Locke's Mill Road, Lockes Landing, Berryville, Clarke County, Virginia, United States, 22611



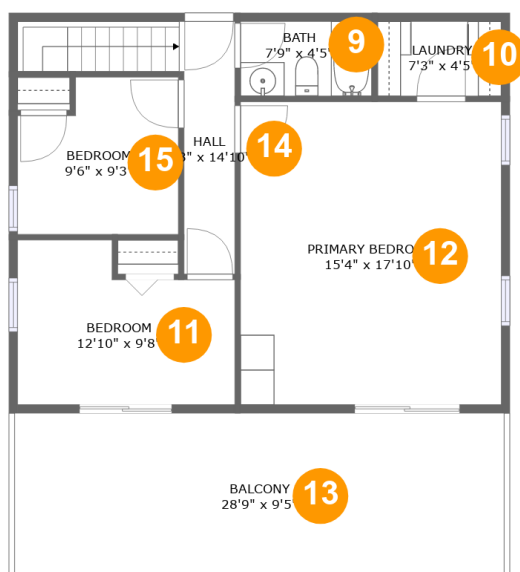
## Room dimensions

Floor 1

Total sqft: 1116 Living area: 624

#		Dimensions	sqft	Counted as living area
1	Dining Area	11'5" x 9'9"	107 sq. ft	Yes
2	Storage	9'1" x 6'9"	62 sq. ft	No
3	Deck	3'2" x 28'6"	91 sq. ft	No
4	Kitchen	11'5" x 5'7"	65 sq. ft	Yes
5	Living Room	17'1" x 19'3"	337 sq. ft	Yes
6	Porch	29'2" x 9'9"	308 sq. ft	No
7	Shed	3'5" x 2'11"	10 sq. ft	Yes
8	WC	4'11" x 6'9"	33 sq. ft	Yes

# 2057 Locke's Mill Road, Lockes Landing, Berryville, Clarke County, Virginia, United States, 22611



## Room dimensions

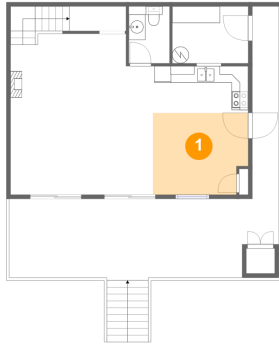
Floor 2

Total sqft: 966 Living area: 694

#		Dimensions	sqft	Counted as living area
9	Bath	7'9" x 4'5"	34 sq. ft	Yes
10	Laundry	7'3" x 4'5"	32 sq. ft	Yes
11	Bedroom	12'10" x 9'8"	107 sq. ft	Yes
12	Primary Bedroom	15'4" x 17'10"	274 sq. ft	Yes
13	Balcony	28'9" x 9'5"	272 sq. ft	No
14	Hall	3'3" x 14'10"	73 sq. ft	Yes
15	Bedroom	9'6" x 9'3"	80 sq. ft	Yes

# 2057 Locke's Mill Road, Lockes Landing, Berryville, Clarke County, Virginia, United States, 22611

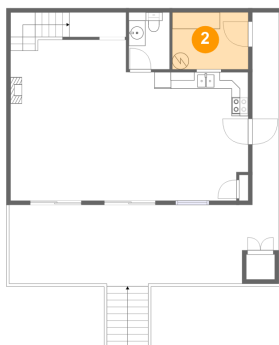
## 1 Floor 1 - Dining Area



Dimensions: 11'5" x 9'9"  
Area: 107 sq. ft  
Counted as living area: Yes

Heated: Yes  
Finished: Yes  
Enclosed: Yes  
Contiguous: Yes  
Permitted: Yes  
Wet space: No  
Addition: No  
Conversion: No

## 2 Floor 1 - Storage

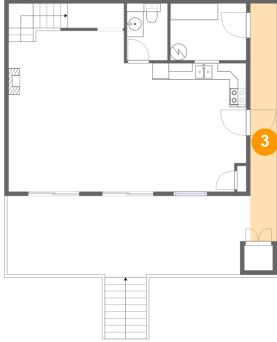


Dimensions: 9'1" x 6'9"  
Area: 62 sq. ft  
Counted as living area: No

Heated: No  
Finished: Yes  
Enclosed: No  
Contiguous: Yes  
Permitted: Yes  
Wet space: No  
Addition: No  
Conversion: No

# 2057 Locke's Mill Road, Lockes Landing, Berryville, Clarke County, Virginia, United States, 22611

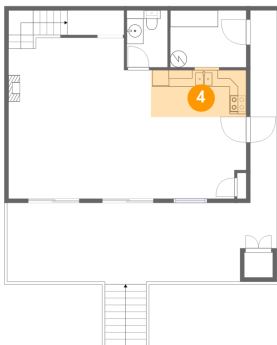
## 3 Floor 1 - Deck



Dimensions: 3'2" x 28'6"  
Area: 91 sq. ft  
Counted as living area: No

Heated: No  
Finished: Yes  
Enclosed: No  
Contiguous: Yes  
Permitted: Yes  
Wet space: No  
Addition: No  
Conversion: No

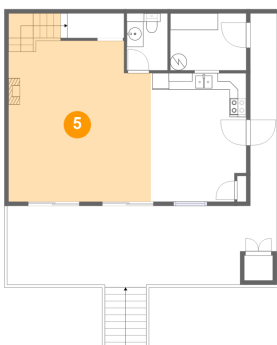
## 4 Floor 1 - Kitchen



Dimensions: 11'5" x 5'7"  
Area: 65 sq. ft  
Counted as living area: Yes

Heated: Yes  
Finished: Yes  
Enclosed: Yes  
Contiguous: Yes  
Permitted: Yes  
Wet space: No  
Addition: No  
Conversion: No

## 5 Floor 1 - Living Room

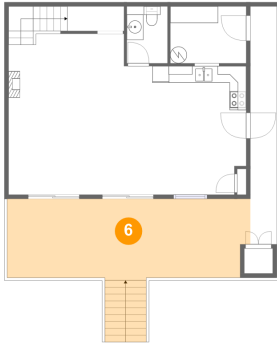


Dimensions: 17'1" x 19'3"  
Area: 337 sq. ft  
Counted as living area: Yes

Heated: Yes  
Finished: Yes  
Enclosed: Yes  
Contiguous: Yes  
Permitted: Yes  
Wet space: No  
Addition: No  
Conversion: No

# 2057 Locke's Mill Road, Lockes Landing, Berryville, Clarke County, Virginia, United States, 22611

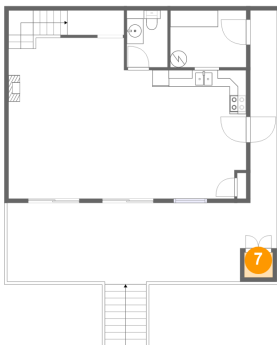
## 6 Floor 1 - Porch



Dimensions: 29'2" x 9'9"  
Area: 308 sq. ft  
Counted as living area: No

Heated: No  
Finished: Yes  
Enclosed: No  
Contiguous: Yes  
Permitted: Yes  
Wet space: No  
Addition: No  
Conversion: No

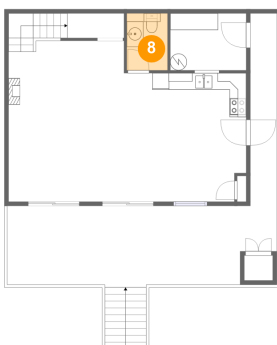
## 7 Floor 1 - Shed



Dimensions: 3'5" x 2'11"  
Area: 10 sq. ft  
Counted as living area: Yes

Heated: No  
Finished: Yes  
Enclosed: No  
Contiguous: Yes  
Permitted: Yes  
Wet space: No  
Addition: No  
Conversion: No

## 8 Floor 1 - WC

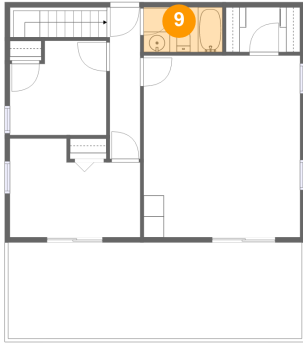


Dimensions: 4'11" x 6'9"  
Area: 33 sq. ft  
Counted as living area: Yes

Heated: Yes  
Finished: Yes  
Enclosed: Yes  
Contiguous: Yes  
Permitted: Yes  
Wet space: Yes  
Addition: No  
Conversion: No

# 2057 Locke's Mill Road, Lockes Landing, Berryville, Clarke County, Virginia, United States, 22611

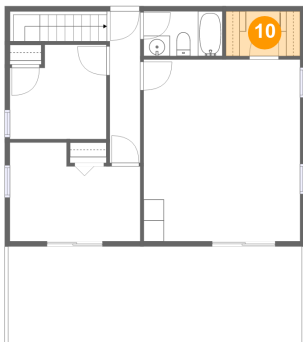
## 9 Floor 2 - Bath



Dimensions: 7'9" x 4'5"  
Area: 34 sq. ft  
Counted as living area: Yes

Heated: Yes  
Finished: Yes  
Enclosed: Yes  
Contiguous: Yes  
Permitted: Yes  
Wet space: Yes  
Addition: No  
Conversion: No

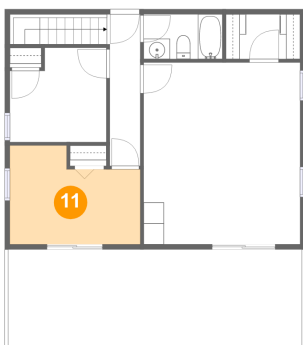
## 10 Floor 2 - Laundry



Dimensions: 7'3" x 4'5"  
Area: 32 sq. ft  
Counted as living area: Yes

Heated: Yes  
Finished: Yes  
Enclosed: Yes  
Contiguous: Yes  
Permitted: Yes  
Wet space: No  
Addition: No  
Conversion: No

## 11 Floor 2 - Bedroom

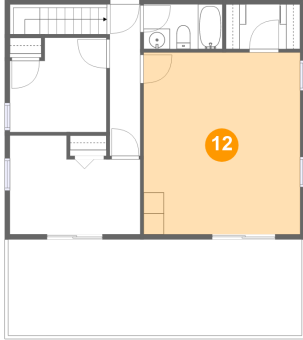


Dimensions: 12'10" x 9'8"  
Area: 107 sq. ft  
Counted as living area: Yes

Heated: Yes  
Finished: Yes  
Enclosed: Yes  
Contiguous: Yes  
Permitted: Yes  
Wet space: No  
Addition: No  
Conversion: No

# 2057 Locke's Mill Road, Lockes Landing, Berryville, Clarke County, Virginia, United States, 22611

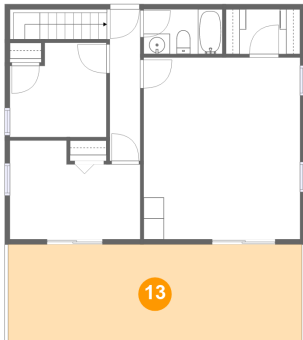
## 12 Floor 2 - Primary Bedroom



Dimensions: 15'4" x 17'10"  
Area: 274 sq. ft  
Counted as living area: Yes

Heated: Yes  
Finished: Yes  
Enclosed: Yes  
Contiguous: Yes  
Permitted: Yes  
Wet space: No  
Addition: No  
Conversion: No

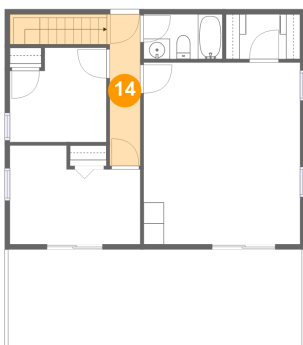
## 13 Floor 2 - Balcony



Dimensions: 28'9" x 9'5"  
Area: 272 sq. ft  
Counted as living area: No

Heated: No  
Finished: Yes  
Enclosed: No  
Contiguous: Yes  
Permitted: Yes  
Wet space: No  
Addition: No  
Conversion: No

## 14 Floor 2 - Hall



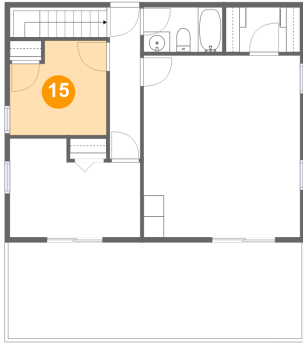
Dimensions: 3'3" x 14'10"  
Area: 73 sq. ft  
Counted as living area: Yes

Heated: Yes  
Finished: Yes  
Enclosed: Yes  
Contiguous: Yes  
Permitted: Yes  
Wet space: No  
Addition: No  
Conversion: No



**2057 Locke's Mill Road, Lockes Landing, Berryville,  
Clarke County, Virginia, United States, 22611**

**15 Floor 2 - Bedroom**



**Dimensions: 9'6" x 9'3"**  
**Area: 80 sq. ft**  
**Counted as living area: Yes**

**Heated: Yes**  
**Finished: Yes**  
**Enclosed: Yes**  
**Contiguous: Yes**  
**Permitted: Yes**  
**Wet space: No**  
**Addition: No**  
**Conversion: No**