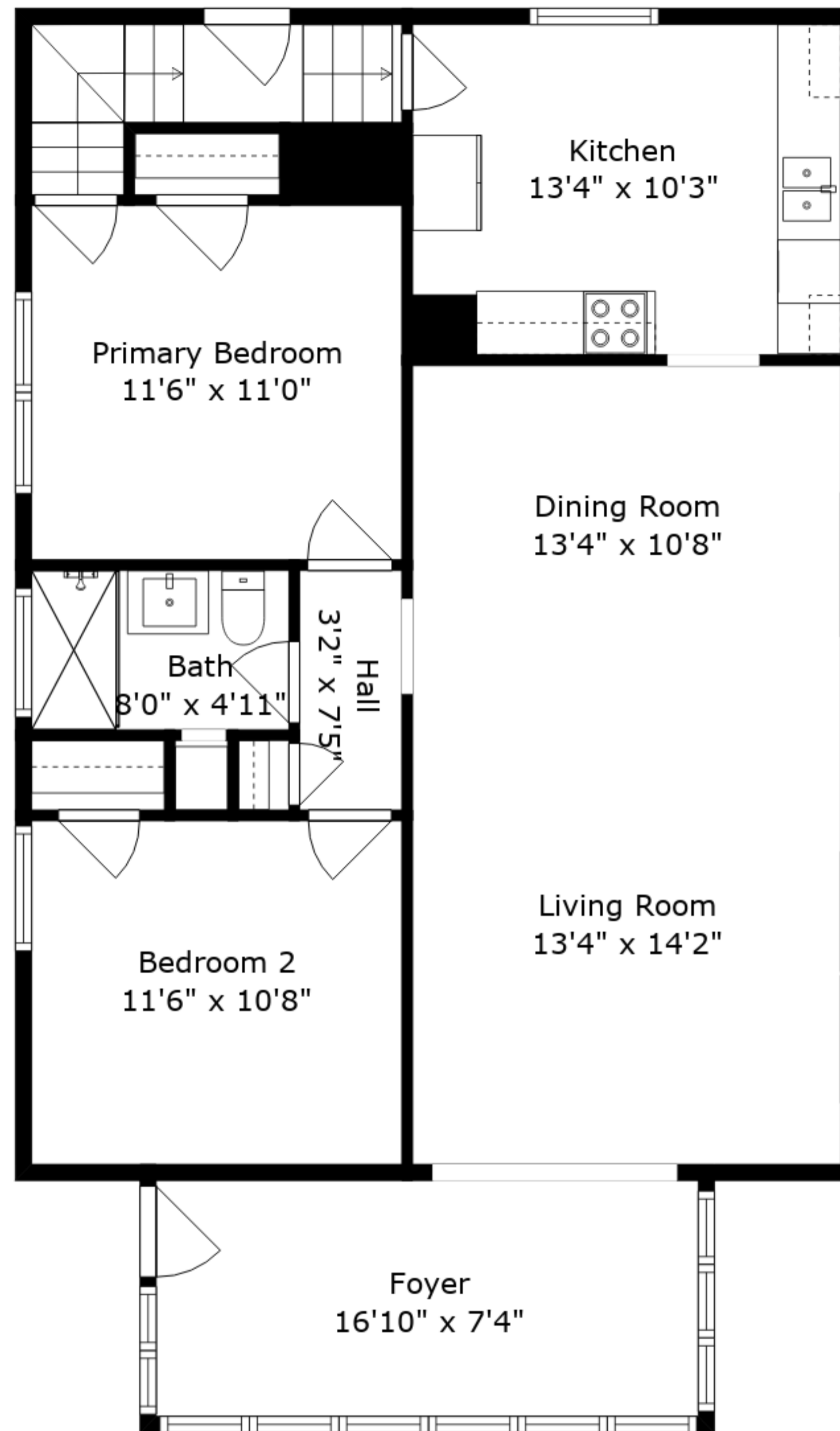
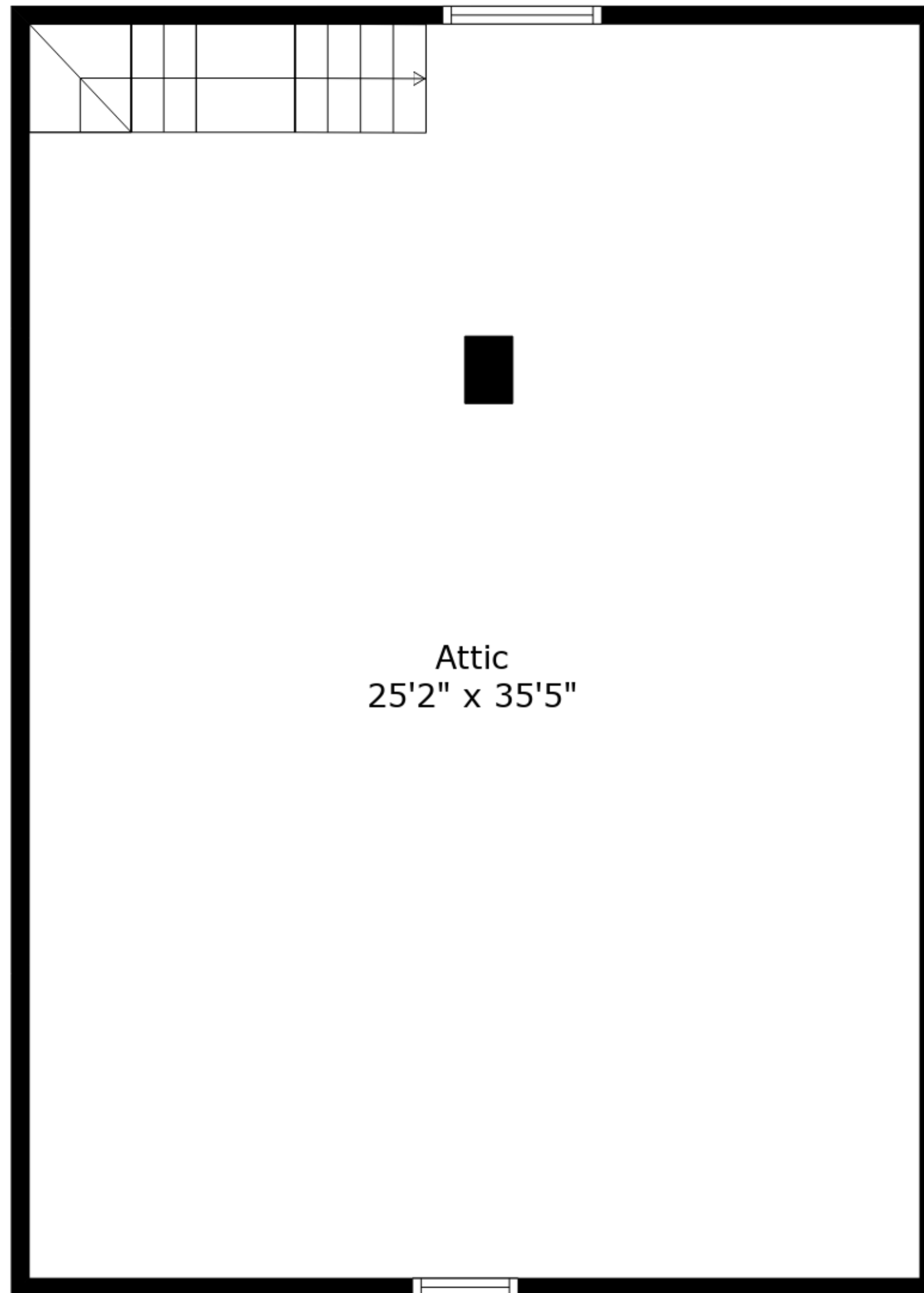


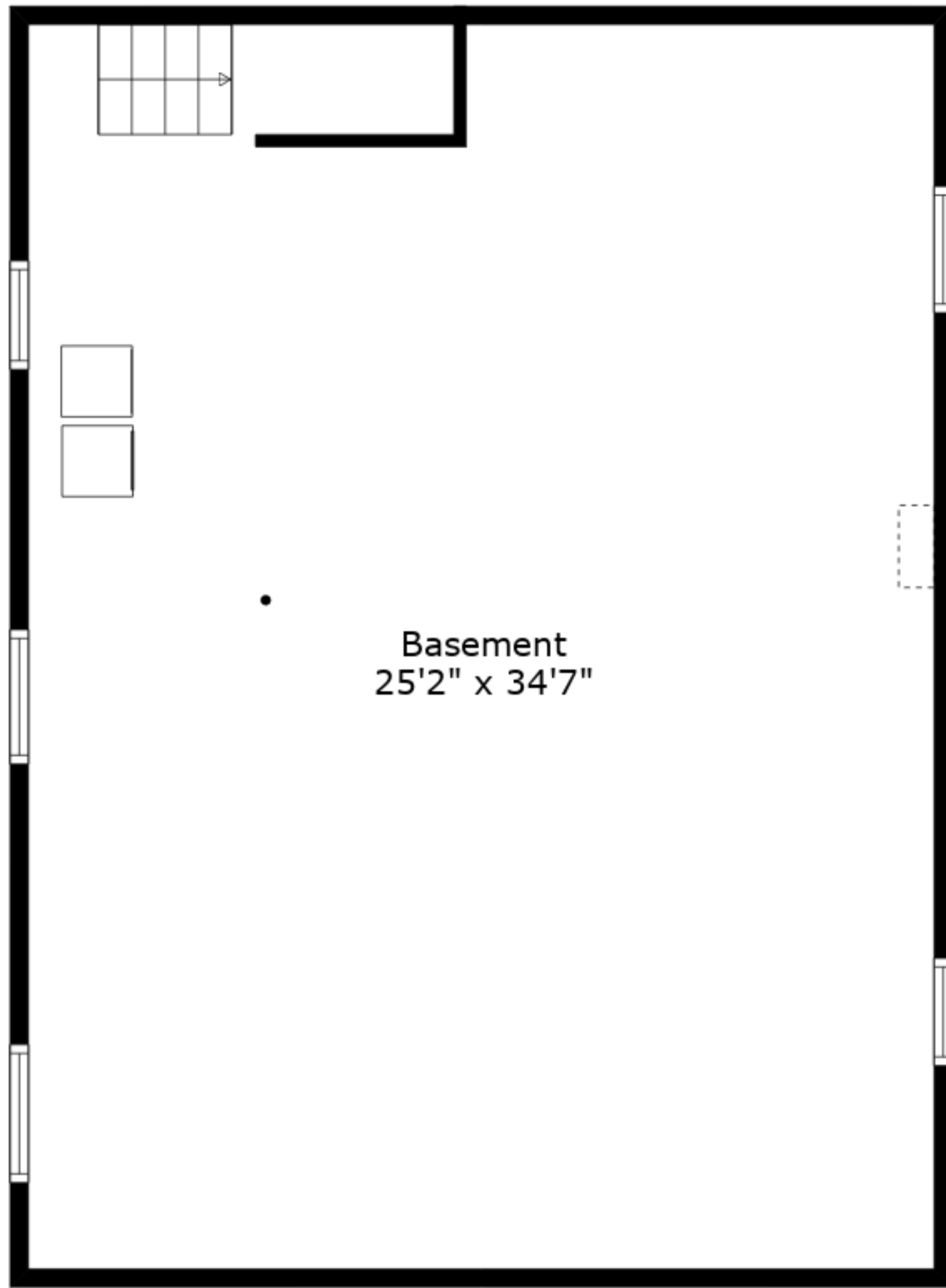
Basement
25'2" x 34'7"



Total GLA: 1092 sq. ft | Total: 2974 sq. ft
 Floor 1 - Below grade: (Excluded areas 930 sq. ft)
 Main floor: 1092 sq. ft
 Upper floor: 0 sq. ft (Excluded areas 952 sq. ft)

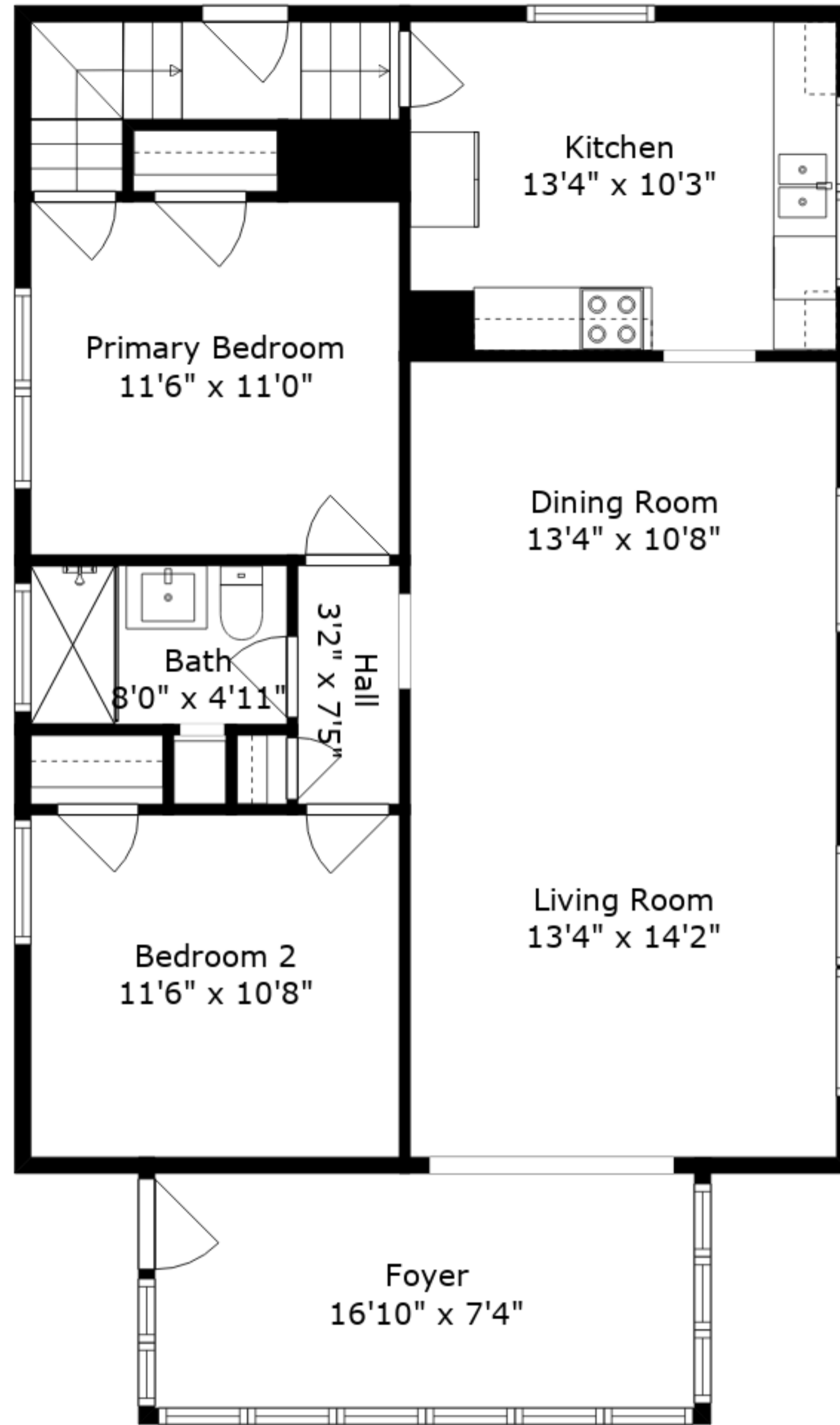
Sizes And Dimensions Are Approximate. Actual May Vary.





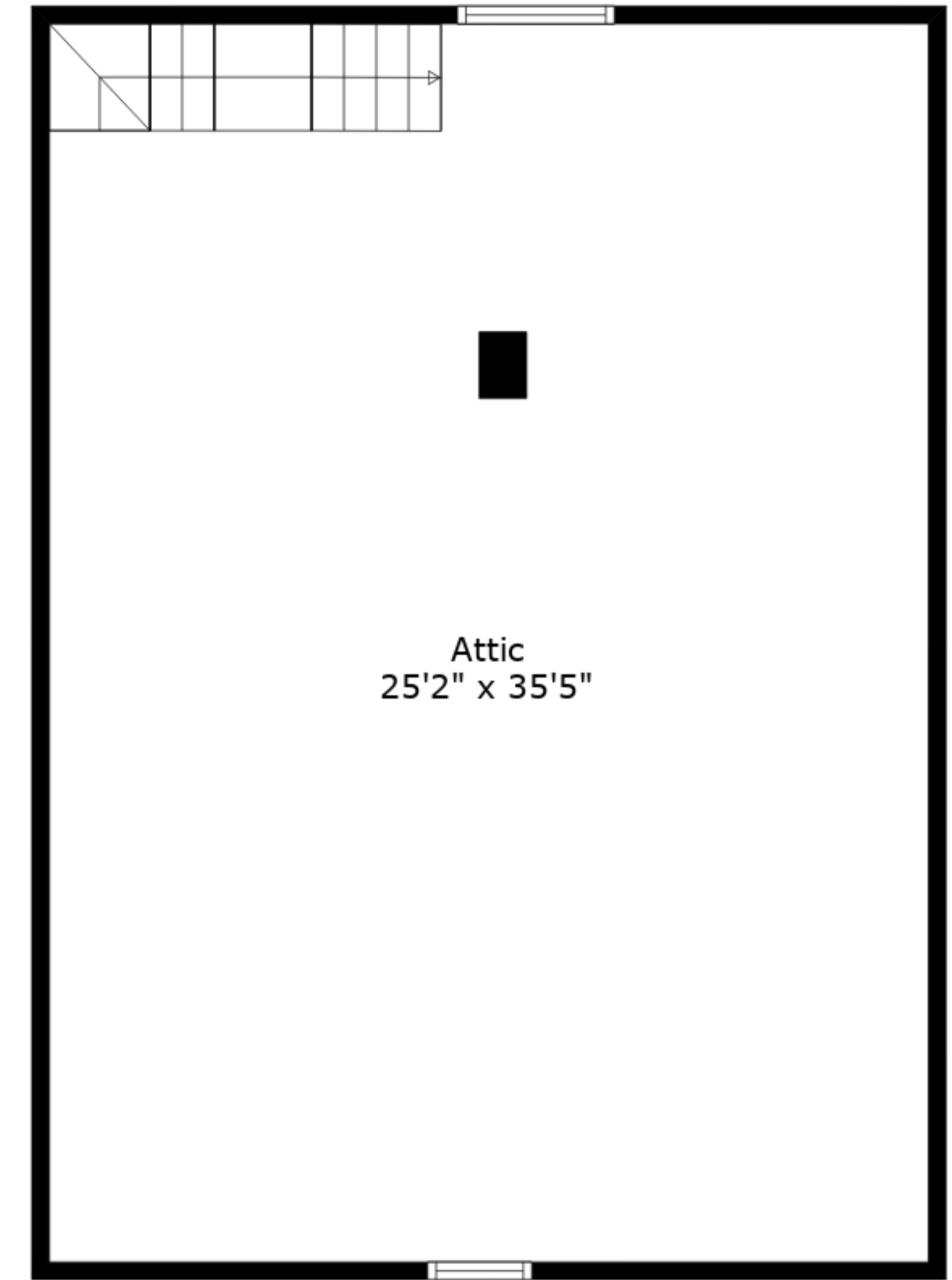
Basement
25'2" x 34'7"

Lower Floor



Foyer
16'10" x 7'4"

Main Floor



Attic
25'2" x 35'5"

Upper Floor

Total GLA: 1092 sq. ft | Total: 2974 sq. ft
 Floor 1 - Below grade: (Excluded areas 930 sq. ft)
 Main floor: 1092 sq. ft
 Upper floor: 0 sq. ft (Excluded areas 952 sq. ft)

Sizes And Dimensions Are Approximate. Actual May Vary.