

# 1315 E 21st St, Cheyenne, WY, US



## Property summary

 **0** Garages

 **5** Bedrooms

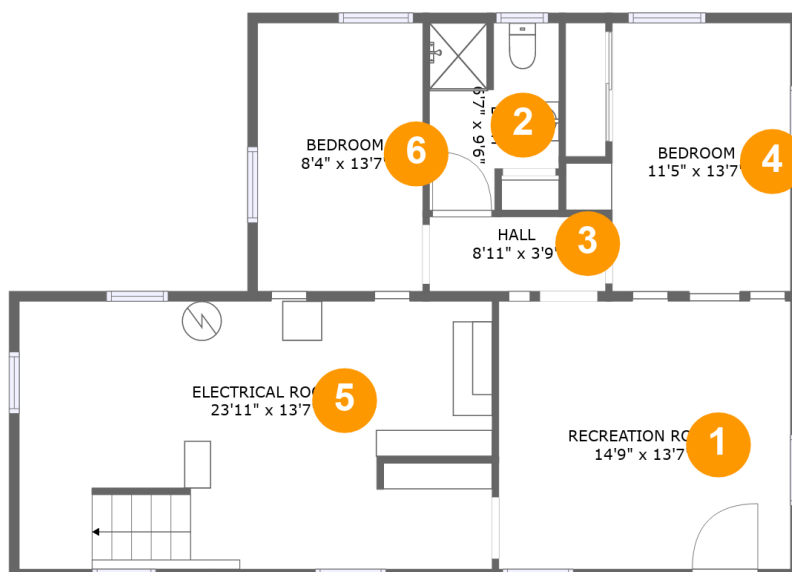
 **2** Bathrooms

 **0** Half baths

 **3** Floors

 **1,702** Gross living area sqft

 **2,405** Total sqft

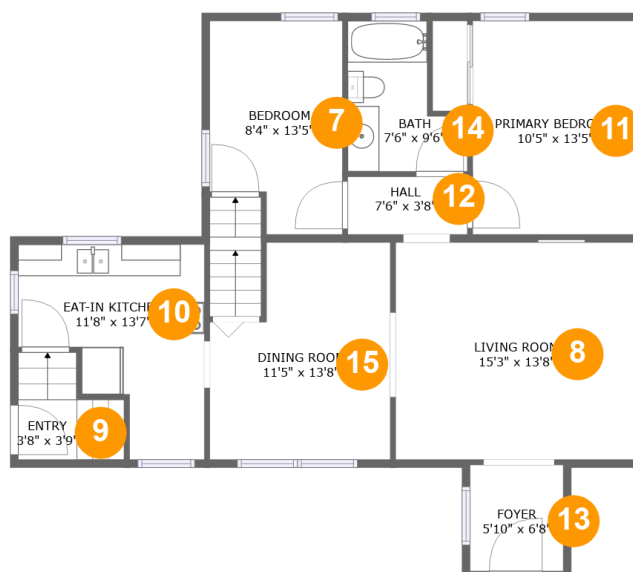
**1315 E 21st St, Cheyenne, WY, US**

## Room dimensions

Floor 1

Total sqft: 976 Living area: 427

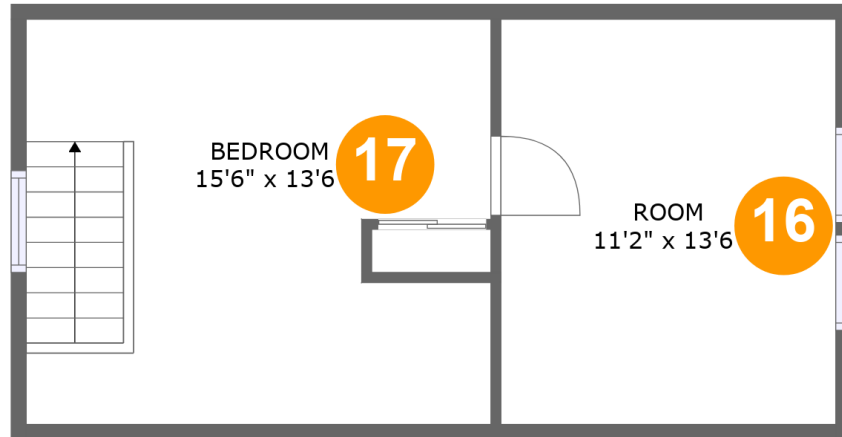
| # |                 | Dimensions     | sqft       | Counted as living area |
|---|-----------------|----------------|------------|------------------------|
| 1 | Recreation Room | 14'9" x 13'7"  | 202 sq. ft | Yes                    |
| 2 | Bath            | 6'7" x 9'6"    | 54 sq. ft  | No                     |
| 3 | Hall            | 8'11" x 3'9"   | 34 sq. ft  | Yes                    |
| 4 | Bedroom         | 11'5" x 13'7"  | 129 sq. ft | No                     |
| 5 | Room            | 23'11" x 13'7" | 322 sq. ft | No                     |
| 6 | Bedroom         | 8'4" x 13'7"   | 117 sq. ft | Yes                    |

**1315 E 21st St, Cheyenne, WY, US****Room dimensions**

Floor 2

Total sqft: 1024 Living area: 1024

| #  |             | Dimensions    | sqft       | Counted as living area |
|----|-------------|---------------|------------|------------------------|
| 7  | Bedroom     | 8'4" x 13'5"  | 103 sq. ft | Yes                    |
| 8  | Living Room | 15'3" x 13'8" | 209 sq. ft | Yes                    |
| 9  | Entry       | 3'8" x 3'9"   | 36 sq. ft  | Yes                    |
| 10 | Kitchen     | 11'8" x 13'7" | 118 sq. ft | Yes                    |
| 11 | Bedroom     | 10'5" x 13'5" | 140 sq. ft | Yes                    |
| 12 | Hall        | 7'6" x 3'8"   | 27 sq. ft  | Yes                    |
| 13 | Entry       | 5'10" x 6'8"  | 39 sq. ft  | Yes                    |
| 14 | Bath        | 7'6" x 9'6"   | 56 sq. ft  | Yes                    |
| 15 | Dining Room | 11'5" x 13'8" | 138 sq. ft | Yes                    |

**1315 E 21st St, Cheyenne, WY, US**

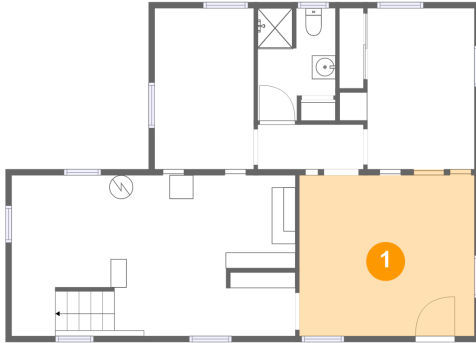
## Room dimensions

Floor 3

Total sqft: 405 Living area: 251

| #  |         | Dimensions    | sqft       | Counted as living area |
|----|---------|---------------|------------|------------------------|
| 16 | Room    | 11'2" x 13'6" | 100 sq. ft | Yes                    |
| 17 | Bedroom | 15'6" x 13'6" | 130 sq. ft | Yes                    |

## 1 Floor 1 - Recreation Room



Dimensions: 14'9" x 13'7"  
Area: 202 sq. ft  
Counted as living area: Yes

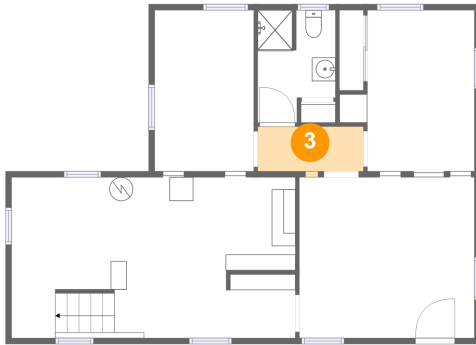
Heated: Yes  
Finished: Yes  
Enclosed: Yes  
Contiguous: Yes  
Permitted: Yes  
Wet space: No  
Addition: No  
Conversion: No

## 2 Floor 1 - Bath



Dimensions: 6'7" x 9'6"  
Area: 54 sq. ft  
Counted as living area: No

Heated: Yes  
Finished: Yes  
Enclosed: Yes  
Contiguous: Yes  
Permitted: Yes  
Wet space: Yes  
Addition: No  
Conversion: No

**1315 E 21st St, Cheyenne, WY, US****3 Floor 1 - Hall**

Dimensions: 8'11" x 3'9"  
Area: 34 sq. ft  
Counted as living area: Yes

Heated: Yes  
Finished: Yes  
Enclosed: Yes  
Contiguous: Yes  
Permitted: Yes  
Wet space: No  
Addition: No  
Conversion: No

**4 Floor 1 - Bedroom**

Dimensions: 11'5" x 13'7"  
Area: 129 sq. ft  
Counted as living area: No

Heated: Yes  
Finished: Yes  
Enclosed: Yes  
Contiguous: Yes  
Permitted: Yes  
Wet space: No  
Addition: No  
Conversion: No

**5 Floor 1 - Room**

Dimensions: 23'11" x 13'7"  
Area: 322 sq. ft  
Counted as living area: No

Heated: No  
Finished: No  
Enclosed: Yes  
Contiguous: Yes  
Permitted: Yes  
Wet space: No  
Addition: No  
Conversion: No

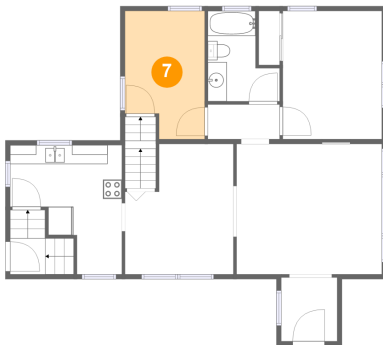
## 6 Floor 1 - Bedroom



Dimensions: 8'4" x 13'7"  
Area: 117 sq. ft  
Counted as living area: Yes

Heated: Yes  
Finished: Yes  
Enclosed: Yes  
Contiguous: Yes  
Permitted: Yes  
Wet space: No  
Addition: No  
Conversion: No

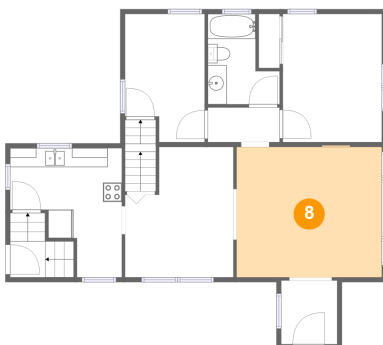
## 7 Floor 2 - Bedroom



Dimensions: 8'4" x 13'5"  
Area: 103 sq. ft  
Counted as living area: Yes

Heated: Yes  
Finished: Yes  
Enclosed: Yes  
Contiguous: Yes  
Permitted: Yes  
Wet space: No  
Addition: No  
Conversion: No

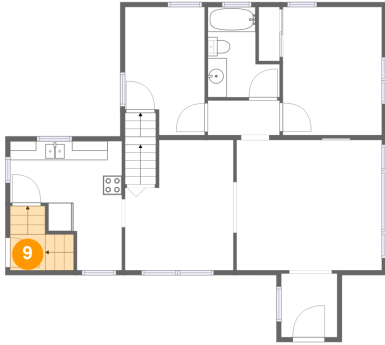
## 8 Floor 2 - Living Room



Dimensions: 15'3" x 13'8"  
Area: 209 sq. ft  
Counted as living area: Yes

Heated: Yes  
Finished: Yes  
Enclosed: Yes  
Contiguous: Yes  
Permitted: Yes  
Wet space: No  
Addition: No  
Conversion: No

## 9 Floor 2 - Entry



Dimensions: 3'8" x 3'9"  
Area: 36 sq. ft  
Counted as living area: Yes

Heated: Yes  
Finished: Yes  
Enclosed: Yes  
Contiguous: Yes  
Permitted: Yes  
Wet space: No  
Addition: No  
Conversion: No

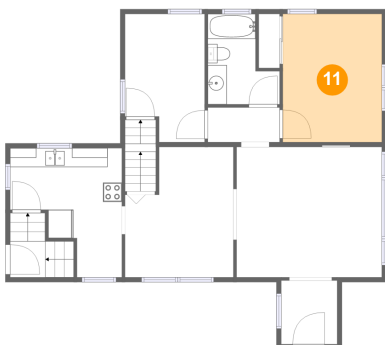
## 10 Floor 2 - Kitchen



Dimensions: 11'8" x 13'7"  
Area: 118 sq. ft  
Counted as living area: Yes

Heated: Yes  
Finished: Yes  
Enclosed: Yes  
Contiguous: Yes  
Permitted: Yes  
Wet space: No  
Addition: No  
Conversion: No

## 11 Floor 2 - Bedroom

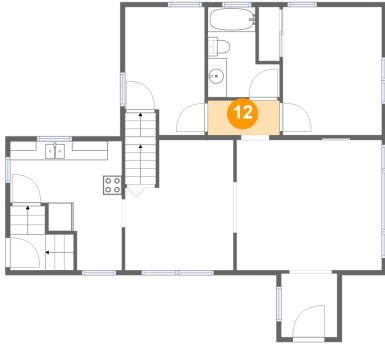


Dimensions: 10'5" x 13'5"  
Area: 140 sq. ft  
Counted as living area: Yes

Heated: Yes  
Finished: Yes  
Enclosed: Yes  
Contiguous: Yes  
Permitted: Yes  
Wet space: No  
Addition: No  
Conversion: No



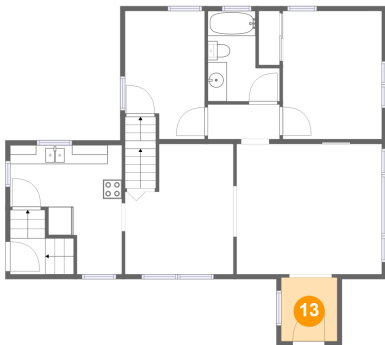
## 12 Floor 2 - Hall



Dimensions: 7'6" x 3'8"  
Area: 27 sq. ft  
Counted as living area: Yes

Heated: Yes  
Finished: Yes  
Enclosed: Yes  
Contiguous: Yes  
Permitted: Yes  
Wet space: No  
Addition: No  
Conversion: No

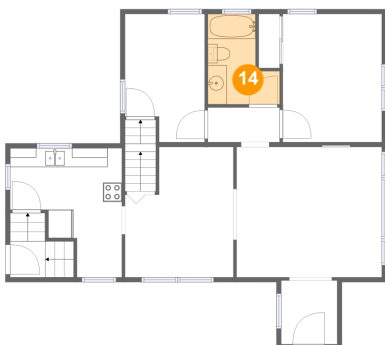
## 13 Floor 2 - Entry



Dimensions: 5'10" x 6'8"  
Area: 39 sq. ft  
Counted as living area: Yes

Heated: Yes  
Finished: Yes  
Enclosed: Yes  
Contiguous: Yes  
Permitted: Yes  
Wet space: No  
Addition: No  
Conversion: No

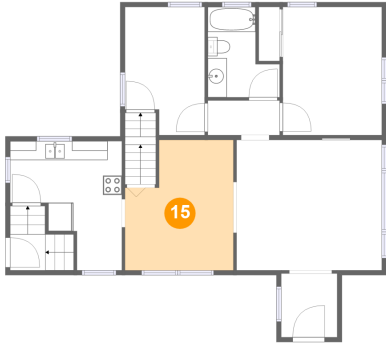
## 14 Floor 2 - Bath



Dimensions: 7'6" x 9'6"  
Area: 56 sq. ft  
Counted as living area: Yes

Heated: Yes  
Finished: Yes  
Enclosed: Yes  
Contiguous: Yes  
Permitted: Yes  
Wet space: Yes  
Addition: No  
Conversion: No

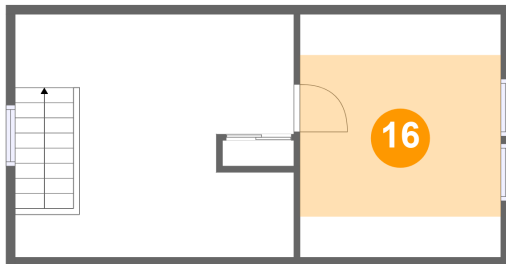
**15** Floor 2 - Dining Room



Dimensions: 11'5" x 13'8"  
Area: 138 sq. ft  
Counted as living area: Yes

Heated: Yes  
Finished: Yes  
Enclosed: Yes  
Contiguous: Yes  
Permitted: Yes  
Wet space: No  
Addition: No  
Conversion: No

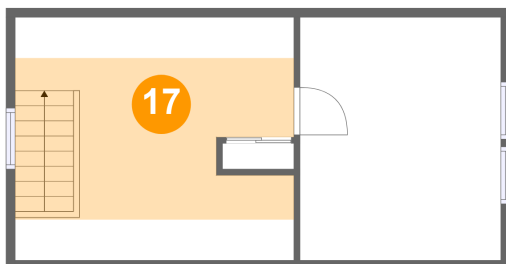
**16** Floor 3 - Room



Dimensions: 11'2" x 13'6"  
Area: 100 sq. ft  
Counted as living area: Yes

Heated: Yes  
Finished: Yes  
Enclosed: Yes  
Contiguous: Yes  
Permitted: Yes  
Wet space: No  
Addition: No  
Conversion: No

**17** Floor 3 - Bedroom



Dimensions: 15'6" x 13'6"  
Area: 130 sq. ft  
Counted as living area: Yes

Heated: Yes  
Finished: Yes  
Enclosed: Yes  
Contiguous: Yes  
Permitted: Yes  
Wet space: No  
Addition: No  
Conversion: No