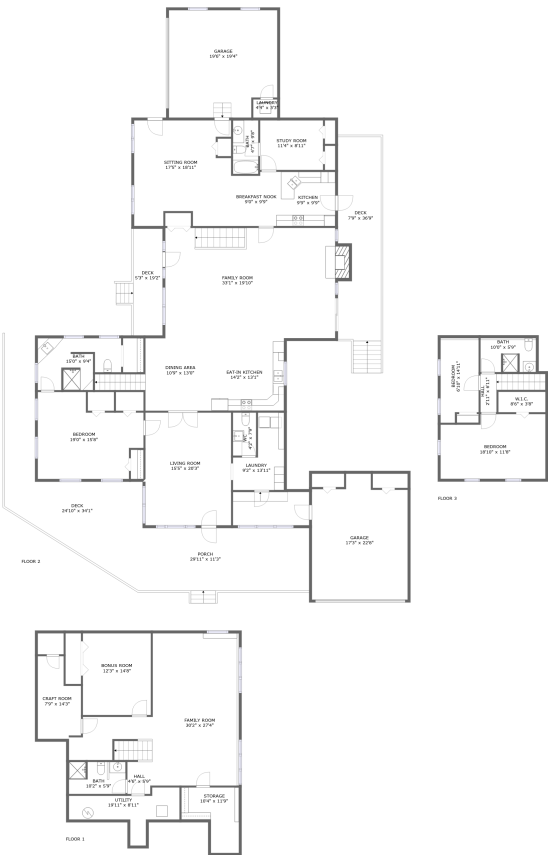


Home report

69151 State Rd 331 ,Bremen,IN,US




Property summary


 **2** Garages


 **3** Bedrooms

 **4** Bathrooms

 **1** Half baths

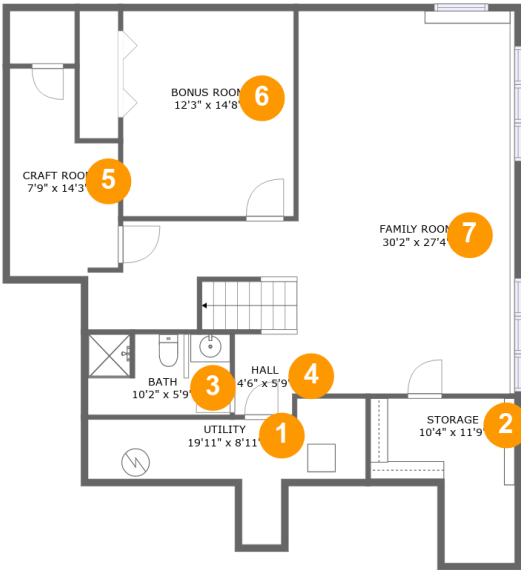
 **3** Floors

 **4,337** Gross living area sqft

 **6,619** Total sqft

Home report

69151 State Rd 331 ,Bremen,IN,US



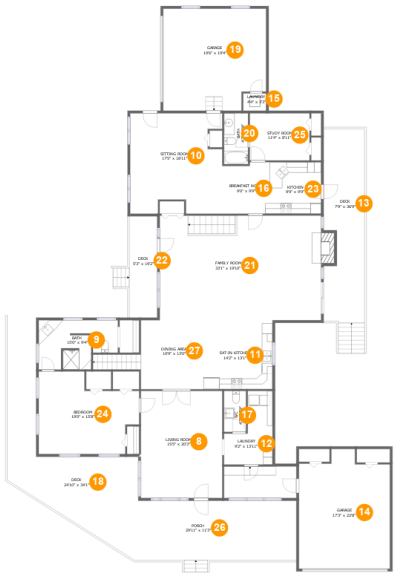
Room dimensions

Floor 1 Total sqft: 1256    Living area: 1027

#		Dimensions	sqft	Counted as living area
1	Utility	19'11" x 8'11"	105 sq. ft	No
2	Storage	10'4" x 11'9"	90 sq. ft	No
3	Bath	10'2" x 5'9"	58 sq. ft	Yes
4	Hall	4'6" x 5'9"	25 sq. ft	Yes
5	Craft Room	7'9" x 14'3"	94 sq. ft	Yes
6	Bonus Room	12'3" x 14'8"	180 sq. ft	Yes
7	Family Room	30'2" x 27'4"	535 sq. ft	Yes

Home report

69151 State Rd 331 ,Bremen,IN,US



Room dimensions

Floor 2 Total sqft: 4851    Living area: 2798

#		Dimensions	sqft	Counted as living area
8	Living Room	15'5" x 20'3"	313 sq. ft	Yes
9	Bath	15'0" x 9'4"	119 sq. ft	Yes
10	Sitting Room	17'5" x 18'11"	307 sq. ft	Yes
11	Eat-in Kitchen	14'2" x 13'1"	185 sq. ft	Yes
12	Laundry	9'2" x 13'11"	92 sq. ft	Yes
13	Deck	7'9" x 36'9"	295 sq. ft	No
14	Garage	17'3" x 22'8"	354 sq. ft	No
15	Laundry	4'4" x 3'3"	14 sq. ft	No
16	Breakfast Nook	9'0" x 9'9"	84 sq. ft	Yes
17	WC	4'2" x 7'9"	32 sq. ft	Yes
18	Deck	24'10" x 34'1"	447 sq. ft	No

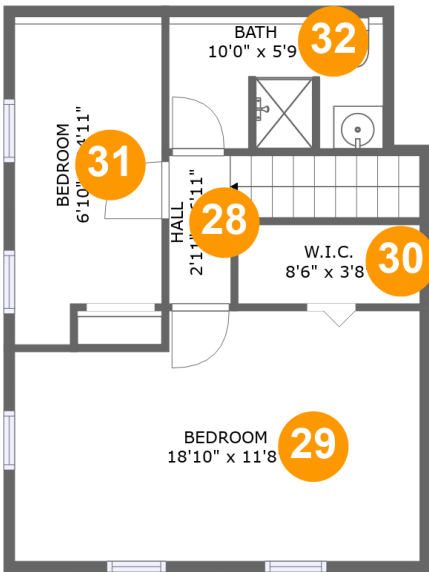
## Home report

**69151 State Rd 331 ,Bremen,IN,US**

#		Dimensions	sqft	Counted as living area
19	Garage	19'6" x 19'4"	360 sq. ft	No
20	Bath	4'7" x 9'8"	44 sq. ft	Yes
21	Family Room	33'1" x 19'10"	621 sq. ft	Yes
22	Deck	5'3" x 19'2"	112 sq. ft	No
23	Kitchen	9'9" x 9'9"	95 sq. ft	Yes
24	Bedroom	19'0" x 15'8"	245 sq. ft	Yes
25	Study Room	11'4" x 8'11"	101 sq. ft	Yes
26	Porch	29'11" x 11'3"	347 sq. ft	No
27	Dining Area	10'9" x 13'0"	166 sq. ft	Yes

Home report

69151 State Rd 331 ,Bremen,IN,US

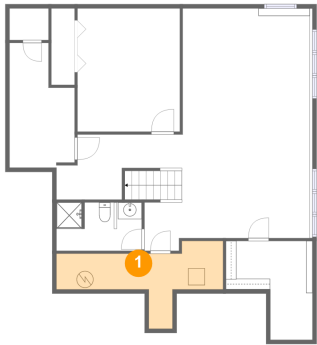


Room dimensions

Floor 3 Total sqft: 512    Living area: 512

#		Dimensions	sqft	Counted as living area
28	Hall	2'11" x 6'11"	45 sq. ft	Yes
29	Bedroom	18'10" x 11'8"	206 sq. ft	Yes
30	W.I.C.	8'6" x 3'8"	31 sq. ft	Yes
31	Bedroom	6'10" x 14'11"	96 sq. ft	Yes
32	Bath	10'0" x 5'9"	59 sq. ft	Yes

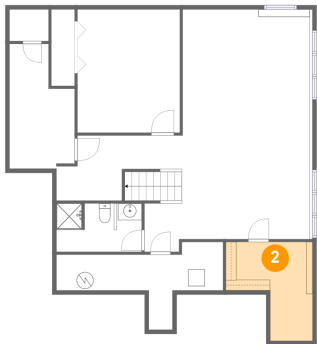
1 Floor 1 - Utility



Dimensions: 19'11" x 8'11"  
Area: 105 sq. ft  
Counted as living area: No

Heated: Yes  
Finished: No  
Enclosed: Yes  
Contiguous: Yes  
Permitted: Yes  
Wet space: No  
Addition: No  
Conversion: No

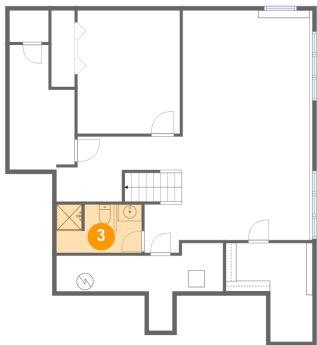
2 Floor 1 - Storage



Dimensions: 10'4" x 11'9"  
Area: 90 sq. ft  
Counted as living area: No

Heated: No  
Finished: No  
Enclosed: No  
Contiguous: No  
Permitted: Yes  
Wet space: No  
Addition: No  
Conversion: No

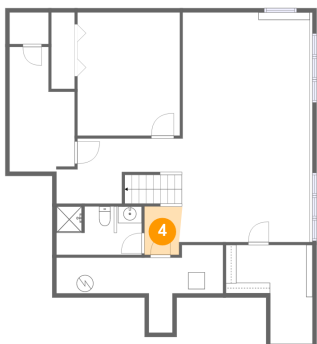
3 Floor 1 - Bath



Dimensions: 10'2" x 5'9"  
Area: 58 sq. ft  
Counted as living area: Yes

Heated: Yes  
Finished: Yes  
Enclosed: Yes  
Contiguous: Yes  
Permitted: Yes  
Wet space: Yes  
Addition: No  
Conversion: No

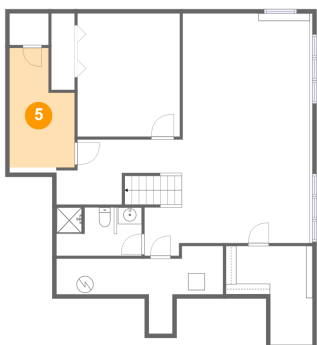
4 Floor 1 - Hall



Dimensions: 4'6" x 5'9"  
Area: 25 sq. ft  
Counted as living area: Yes

Heated: Yes  
Finished: Yes  
Enclosed: Yes  
Contiguous: Yes  
Permitted: Yes  
Wet space: No  
Addition: No  
Conversion: No

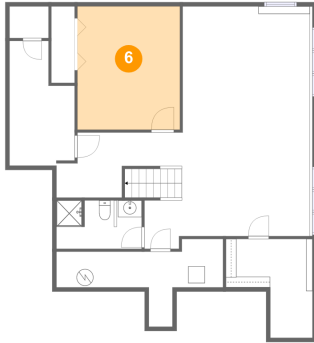
5 Floor 1 - Craft Room



Dimensions: 7'9" x 14'3"  
Area: 94 sq. ft  
Counted as living area: Yes

Heated: Yes  
Finished: Yes  
Enclosed: Yes  
Contiguous: Yes  
Permitted: Yes  
Wet space: No  
Addition: No  
Conversion: No

## 6 Floor 1 - Bonus Room



Dimensions: 12'3" x 14'8"  
Area: 180 sq. ft  
Counted as living area: Yes

Heated: Yes  
Finished: Yes  
Enclosed: Yes  
Contiguous: Yes  
Permitted: Yes  
Wet space: No  
Addition: No  
Conversion: No

## 7 Floor 1 - Family Room



Dimensions: 30'2" x 27'4"  
Area: 535 sq. ft  
Counted as living area: Yes

Heated: Yes  
Finished: Yes  
Enclosed: Yes  
Contiguous: Yes  
Permitted: Yes  
Wet space: No  
Addition: No  
Conversion: No

## 8 Floor 2 - Living Room



Dimensions: 15'5" x 20'3"  
Area: 313 sq. ft  
Counted as living area: Yes

Heated: Yes  
Finished: Yes  
Enclosed: Yes  
Contiguous: Yes  
Permitted: Yes  
Wet space: No  
Addition: No  
Conversion: No



9 Floor 2 - Bath



Dimensions: 15'0" x 9'4"  
Area: 119 sq. ft  
Counted as living area: Yes

Heated: Yes  
Finished: Yes  
Enclosed: Yes  
Contiguous: Yes  
Permitted: Yes  
Wet space: Yes  
Addition: No  
Conversion: No

10 Floor 2 - Sitting Room



Dimensions: 17'5" x 18'11"  
Area: 307 sq. ft  
Counted as living area: Yes

Heated: Yes  
Finished: Yes  
Enclosed: Yes  
Contiguous: Yes  
Permitted: Yes  
Wet space: No  
Addition: No  
Conversion: No

11 Floor 2 - Eat-in Kitchen



Dimensions: 14'2" x 13'1"  
Area: 185 sq. ft  
Counted as living area: Yes

Heated: Yes  
Finished: Yes  
Enclosed: Yes  
Contiguous: Yes  
Permitted: Yes  
Wet space: No  
Addition: No  
Conversion: No

## 12 Floor 2 - Laundry



Dimensions: 9'2" x 13'11"  
Area: 92 sq. ft  
Counted as living area: Yes

Heated: Yes  
Finished: Yes  
Enclosed: Yes  
Contiguous: Yes  
Permitted: Yes  
Wet space: No  
Addition: No  
Conversion: No

## 13 Floor 2 - Deck



Dimensions: 7'9" x 36'9"  
Area: 295 sq. ft  
Counted as living area: No

Heated: No  
Finished: Yes  
Enclosed: No  
Contiguous: Yes  
Permitted: Yes  
Wet space: No  
Addition: No  
Conversion: No

## 14 Floor 2 - Garage



Dimensions: 17'3" x 22'8"  
Area: 354 sq. ft  
Counted as living area: No

Heated: No  
Finished: No  
Enclosed: Yes  
Contiguous: Yes  
Permitted: Yes  
Wet space: No  
Addition: No  
Conversion: No

15 Floor 2 - Laundry



Dimensions: 4'4" x 3'3"  
Area: 14 sq. ft  
Counted as living area: No

Heated: Yes  
Finished: Yes  
Enclosed: Yes  
Contiguous: No  
Permitted: Yes  
Wet space: No  
Addition: No  
Conversion: No

16 Floor 2 - Breakfast Nook



Dimensions: 9'0" x 9'9"  
Area: 84 sq. ft  
Counted as living area: Yes

Heated: Yes  
Finished: Yes  
Enclosed: Yes  
Contiguous: Yes  
Permitted: Yes  
Wet space: No  
Addition: No  
Conversion: No

17 Floor 2 - WC



Dimensions: 4'2" x 7'9"  
Area: 32 sq. ft  
Counted as living area: Yes

Heated: Yes  
Finished: Yes  
Enclosed: Yes  
Contiguous: Yes  
Permitted: Yes  
Wet space: Yes  
Addition: No  
Conversion: No

## 18 Floor 2 - Deck



Dimensions: 24'10" x 34'1"  
Area: 447 sq. ft  
Counted as living area: No

Heated: No  
Finished: Yes  
Enclosed: No  
Contiguous: Yes  
Permitted: Yes  
Wet space: No  
Addition: No  
Conversion: No

## 19 Floor 2 - Garage



Dimensions: 19'6" x 19'4"  
Area: 360 sq. ft  
Counted as living area: No

Heated: No  
Finished: No  
Enclosed: Yes  
Contiguous: Yes  
Permitted: Yes  
Wet space: No  
Addition: No  
Conversion: No

## 20 Floor 2 - Bath



Dimensions: 4'7" x 9'8"  
Area: 44 sq. ft  
Counted as living area: Yes

Heated: Yes  
Finished: Yes  
Enclosed: Yes  
Contiguous: Yes  
Permitted: Yes  
Wet space: Yes  
Addition: No  
Conversion: No

21 Floor 2 - Family Room



Dimensions: 33'1" x 19'10"  
Area: 621 sq. ft  
Counted as living area: Yes

Heated: Yes  
Finished: Yes  
Enclosed: Yes  
Contiguous: Yes  
Permitted: Yes  
Wet space: No  
Addition: No  
Conversion: No

22 Floor 2 - Deck



Dimensions: 5'3" x 19'2"  
Area: 112 sq. ft  
Counted as living area: No

Heated: No  
Finished: Yes  
Enclosed: No  
Contiguous: Yes  
Permitted: Yes  
Wet space: No  
Addition: No  
Conversion: No

23 Floor 2 - Kitchen



Dimensions: 9'9" x 9'9"  
Area: 95 sq. ft  
Counted as living area: Yes

Heated: Yes  
Finished: Yes  
Enclosed: Yes  
Contiguous: Yes  
Permitted: Yes  
Wet space: No  
Addition: No  
Conversion: No

24 Floor 2 - Bedroom



Dimensions: 19'0" x 15'8"  
Area: 245 sq. ft  
Counted as living area: Yes

Heated: Yes  
Finished: Yes  
Enclosed: Yes  
Contiguous: Yes  
Permitted: Yes  
Wet space: No  
Addition: No  
Conversion: No

25 Floor 2 - Study Room



Dimensions: 11'4" x 8'11"  
Area: 101 sq. ft  
Counted as living area: Yes

Heated: Yes  
Finished: Yes  
Enclosed: Yes  
Contiguous: Yes  
Permitted: Yes  
Wet space: No  
Addition: No  
Conversion: No

26 Floor 2 - Porch



Dimensions: 29'11" x 11'3"  
Area: 347 sq. ft  
Counted as living area: No

Heated: No  
Finished: Yes  
Enclosed: No  
Contiguous: Yes  
Permitted: Yes  
Wet space: No  
Addition: No  
Conversion: No

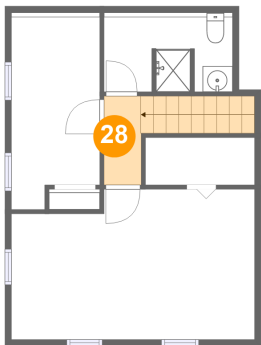
27 Floor 2 - Dining Area



Dimensions: 10'9" x 13'0"  
Area: 166 sq. ft  
Counted as living area: Yes

Heated: Yes  
Finished: Yes  
Enclosed: Yes  
Contiguous: Yes  
Permitted: Yes  
Wet space: No  
Addition: No  
Conversion: No

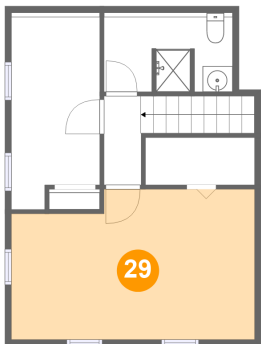
28 Floor 3 - Hall



Dimensions: 2'11" x 6'11"  
Area: 45 sq. ft  
Counted as living area: Yes

Heated: Yes  
Finished: Yes  
Enclosed: Yes  
Contiguous: Yes  
Permitted: Yes  
Wet space: No  
Addition: No  
Conversion: No

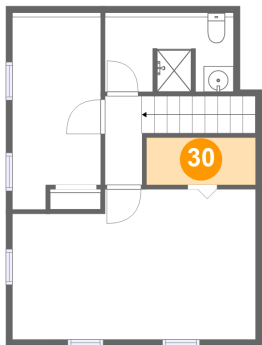
29 Floor 3 - Bedroom



Dimensions: 18'10" x 11'8"  
Area: 206 sq. ft  
Counted as living area: Yes

Heated: Yes  
Finished: Yes  
Enclosed: Yes  
Contiguous: Yes  
Permitted: Yes  
Wet space: No  
Addition: No  
Conversion: No

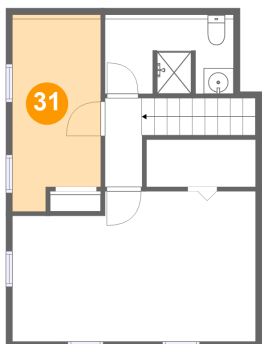
30 Floor 3 - W.I.C.



Dimensions: 8'6" x 3'8"  
Area: 31 sq. ft  
Counted as living area: Yes

Heated: Yes  
Finished: Yes  
Enclosed: Yes  
Contiguous: Yes  
Permitted: Yes  
Wet space: No  
Addition: No  
Conversion: No

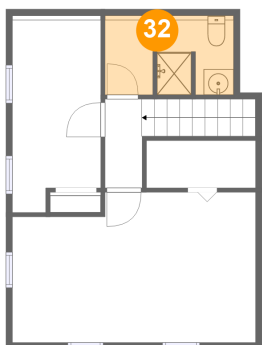
31 Floor 3 - Bedroom



Dimensions: 6'10" x 14'11"  
Area: 96 sq. ft  
Counted as living area: Yes

Heated: Yes  
Finished: Yes  
Enclosed: Yes  
Contiguous: Yes  
Permitted: Yes  
Wet space: No  
Addition: No  
Conversion: No

32 Floor 3 - Bath



Dimensions: 10'0" x 5'9"  
Area: 59 sq. ft  
Counted as living area: Yes

Heated: Yes  
Finished: Yes  
Enclosed: Yes  
Contiguous: Yes  
Permitted: Yes  
Wet space: Yes  
Addition: No  
Conversion: No