


620 Diffie Road, Moscow, Fayette County, Tennessee, United States, 38057



Property summary


 **2** Garages

 **4** Bedrooms

 **3** Bathrooms

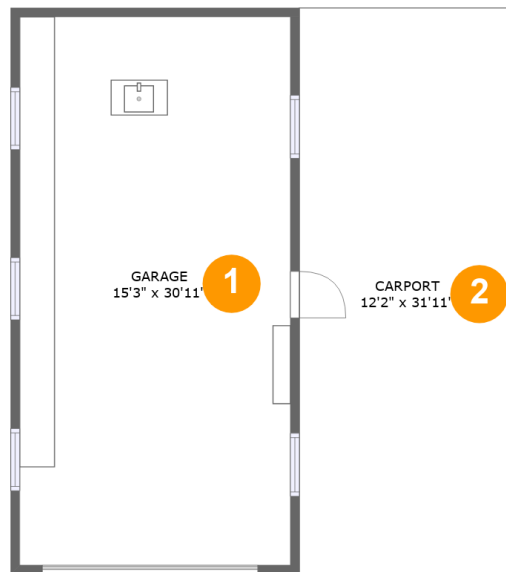
 **0** Half baths

 **3** Floors

 **2,871** Gross living area sqft

 **5,760** Total sqft

**620 Diffie Road, Moscow, Fayette County,
Tennessee, United States, 38057**



Room dimensions

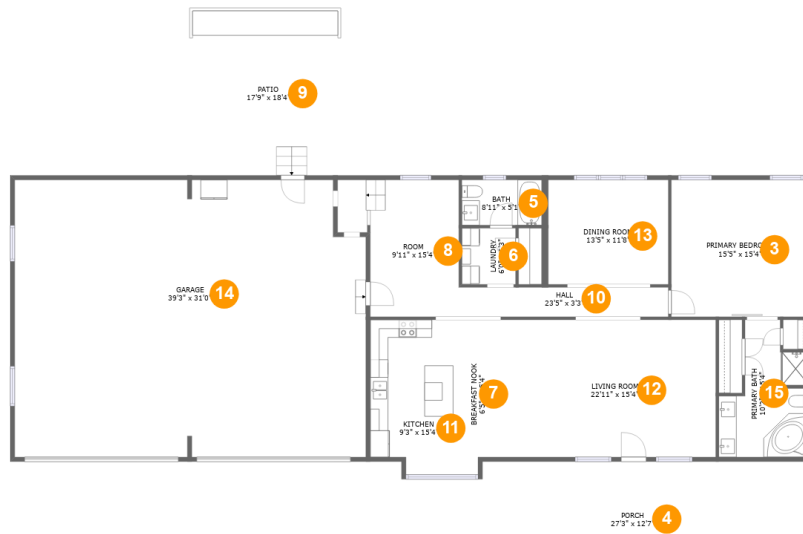
Floor 1

Total sqft: 909

Living area: 0

#		Dimensions	sqft	Counted as living area
1	Garage	15'3" x 30'11"	473 sq. ft	No
2	Carport	12'2" x 31'11"	389 sq. ft	No

620 Diffie Road, Moscow, Fayette County, Tennessee, United States, 38057



Room dimensions

Floor 2

Total sqft: 3561

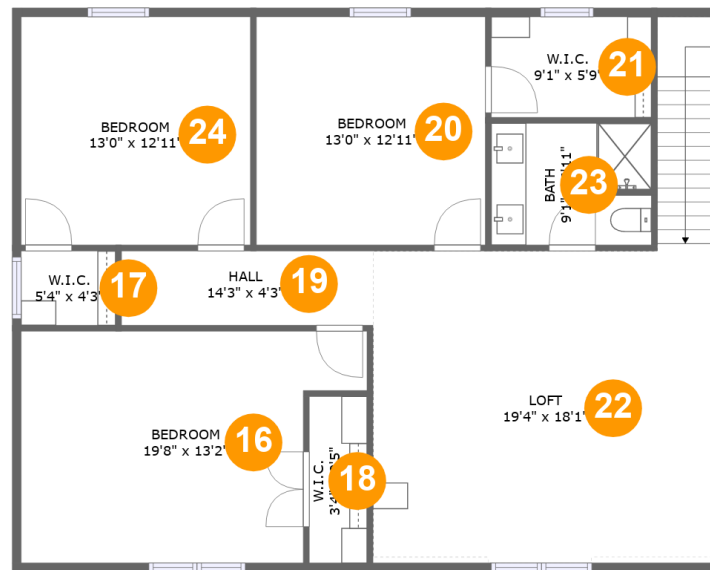
Living area: 1628

#		Dimensions	sqft	Counted as living area
3	Bedroom	15'5" x 15'4"	236 sq. ft	Yes
4	Outdoor	27'3" x 12'7"	343 sq. ft	No
5	Bath	8'11" x 5'1"	45 sq. ft	Yes
6	Utility	6'0" x 6'3"	38 sq. ft	Yes
7	Nook	6'5" x 15'4"	99 sq. ft	Yes
8	Room	9'11" x 15'4"	173 sq. ft	Yes
9	Outdoor	17'9" x 18'4"	325 sq. ft	No
10	Hall	23'5" x 3'3"	77 sq. ft	Yes
11	Kitchen	9'3" x 15'4"	142 sq. ft	Yes
12	Living Room	22'11" x 15'4"	352 sq. ft	Yes
13	Dining Room	13'5" x 11'8"	157 sq. ft	Yes

**620 Diffie Road, Moscow, Fayette County,
Tennessee, United States, 38057**

#		Dimensions	sqft	Counted as living area
14	Garage	39'3" x 31'0"	1191 sq. ft	No
15	Bath	10'2" x 15'4"	118 sq. ft	Yes

620 Diffie Road, Moscow, Fayette County, Tennessee, United States, 38057



Room dimensions

Floor 3

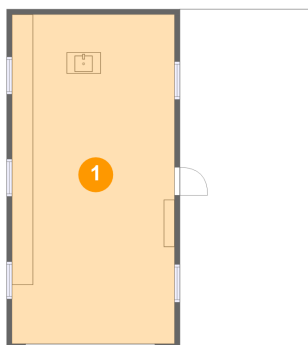
Total sqft: 1290

Living area: 1243

#		Dimensions	sqft	Counted as living area
16	Bedroom	19'8" x 13'2"	220 sq. ft	Yes
17	Cl	5'4" x 4'3"	23 sq. ft	Yes
18	Cl	3'4" x 9'5"	30 sq. ft	Yes
19	Hall	14'3" x 4'3"	60 sq. ft	Yes
20	Bedroom	13'0" x 12'11"	165 sq. ft	Yes
21	Cl	9'1" x 5'9"	49 sq. ft	Yes
22	Loft	19'4" x 18'1"	379 sq. ft	Yes
23	Bath	9'1" x 6'11"	62 sq. ft	Yes
24	Bedroom	13'0" x 12'11"	165 sq. ft	Yes

620 Diffie Road, Moscow, Fayette County, Tennessee, United States, 38057

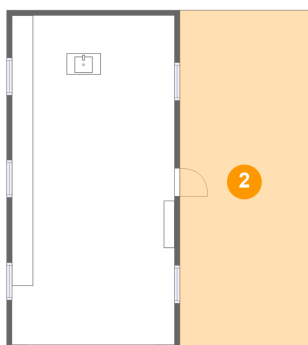
1 Floor 1 - Garage



Dimensions: 15'3" x 30'11"
Area: 473 sq. ft
Counted as living area: No

Heated: No
Finished: No
Enclosed: Yes
Contiguous: Yes
Permitted: Yes
Wet space: No
Addition: No
Conversion: No

2 Floor 1 - Carport



Dimensions: 12'2" x 31'11"
Area: 389 sq. ft
Counted as living area: No

Heated: No
Finished: Yes
Enclosed: No
Contiguous: Yes
Permitted: Yes
Wet space: No
Addition: No
Conversion: No

**620 Diffie Road, Moscow, Fayette County,
Tennessee, United States, 38057**

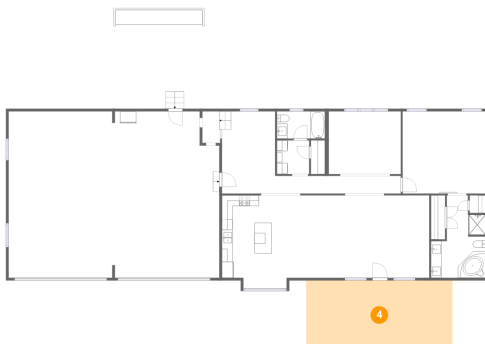
3 Floor 2 - Bedroom



Dimensions: 15'5" x 15'4"
Area: 236 sq. ft
Counted as living area: Yes

Heated: Yes
Finished: Yes
Enclosed: Yes
Contiguous: Yes
Permitted: Yes
Wet space: No
Addition: No
Conversion: No

4 Floor 2 - Outdoor



Dimensions: 27'3" x 12'7"
Area: 343 sq. ft
Counted as living area: No

Heated: No
Finished: Yes
Enclosed: No
Contiguous: Yes
Permitted: Yes
Wet space: No
Addition: No
Conversion: No

5 Floor 2 - Bath



Dimensions: 8'11" x 5'1"
Area: 45 sq. ft
Counted as living area: Yes

Heated: Yes
Finished: Yes
Enclosed: Yes
Contiguous: Yes
Permitted: Yes
Wet space: Yes
Addition: No
Conversion: No

**620 Diffie Road, Moscow, Fayette County,
Tennessee, United States, 38057**

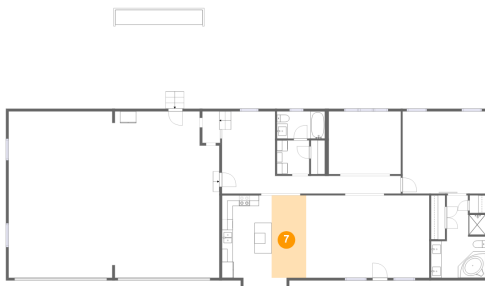
6 Floor 2 - Utility



Dimensions: 6'0" x 6'3"
Area: 38 sq. ft
Counted as living area: Yes

Heated: Yes
Finished: Yes
Enclosed: Yes
Contiguous: Yes
Permitted: Yes
Wet space: No
Addition: No
Conversion: No

7 Floor 2 - Nook



Dimensions: 6'5" x 15'4"
Area: 99 sq. ft
Counted as living area: Yes

Heated: Yes
Finished: Yes
Enclosed: Yes
Contiguous: Yes
Permitted: Yes
Wet space: No
Addition: No
Conversion: No

8 Floor 2 - Room

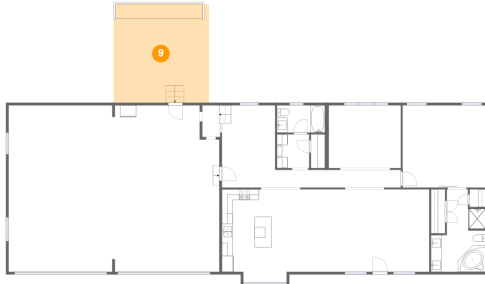


Dimensions: 9'11" x 15'4"
Area: 173 sq. ft
Counted as living area: Yes

Heated: Yes
Finished: Yes
Enclosed: Yes
Contiguous: Yes
Permitted: Yes
Wet space: No
Addition: No
Conversion: No

620 Diffie Road, Moscow, Fayette County, Tennessee, United States, 38057

9 Floor 2 - Outdoor



Dimensions: 17'9" x 18'4"
Area: 325 sq. ft
Counted as living area: No

Heated: No
Finished: Yes
Enclosed: No
Contiguous: Yes
Permitted: Yes
Wet space: No
Addition: No
Conversion: No

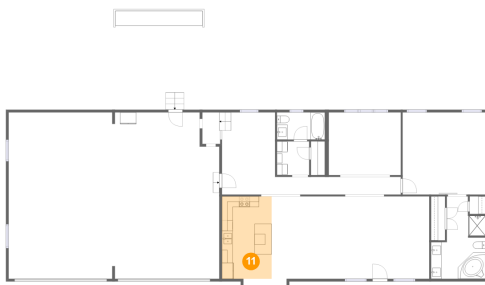
10 Floor 2 - Hall



Dimensions: 23'5" x 3'3"
Area: 77 sq. ft
Counted as living area: Yes

Heated: Yes
Finished: Yes
Enclosed: Yes
Contiguous: Yes
Permitted: Yes
Wet space: No
Addition: No
Conversion: No

11 Floor 2 - Kitchen



Dimensions: 9'3" x 15'4"
Area: 142 sq. ft
Counted as living area: Yes

Heated: Yes
Finished: Yes
Enclosed: Yes
Contiguous: Yes
Permitted: Yes
Wet space: No
Addition: No
Conversion: No

**620 Diffie Road, Moscow, Fayette County,
Tennessee, United States, 38057**

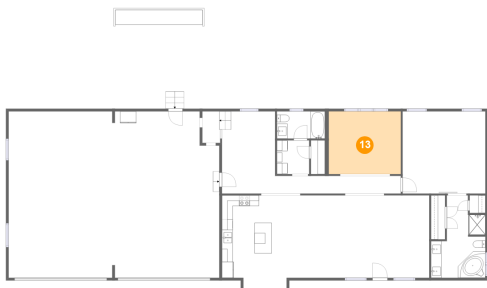
12 Floor 2 - Living Room



Dimensions: 22'11" x 15'4"
Area: 352 sq. ft
Counted as living area: Yes

Heated: Yes
Finished: Yes
Enclosed: Yes
Contiguous: Yes
Permitted: Yes
Wet space: No
Addition: No
Conversion: No

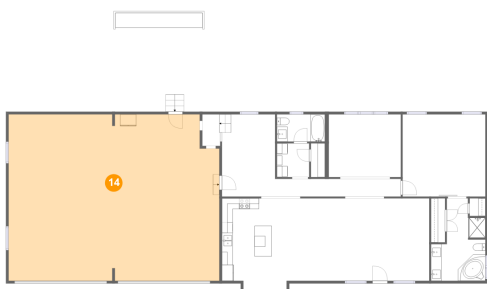
13 Floor 2 - Dining Room



Dimensions: 13'5" x 11'8"
Area: 157 sq. ft
Counted as living area: Yes

Heated: Yes
Finished: Yes
Enclosed: Yes
Contiguous: Yes
Permitted: Yes
Wet space: No
Addition: No
Conversion: No

14 Floor 2 - Garage

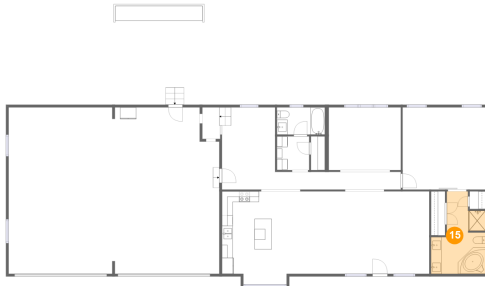


Dimensions: 39'3" x 31'0"
Area: 1191 sq. ft
Counted as living area: No

Heated: No
Finished: No
Enclosed: Yes
Contiguous: Yes
Permitted: Yes
Wet space: No
Addition: No
Conversion: No

**620 Diffie Road, Moscow, Fayette County,
Tennessee, United States, 38057**

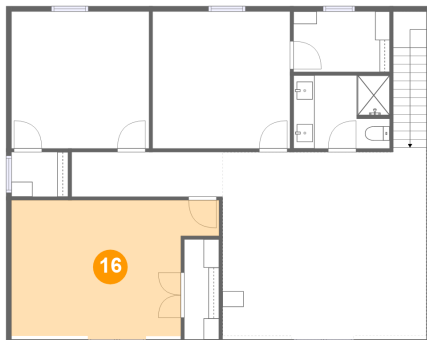
15 Floor 2 - Bath



Dimensions: 10'2" x 15'4"
Area: 118 sq. ft
Counted as living area: Yes

Heated: Yes
Finished: Yes
Enclosed: Yes
Contiguous: Yes
Permitted: Yes
Wet space: Yes
Addition: No
Conversion: No

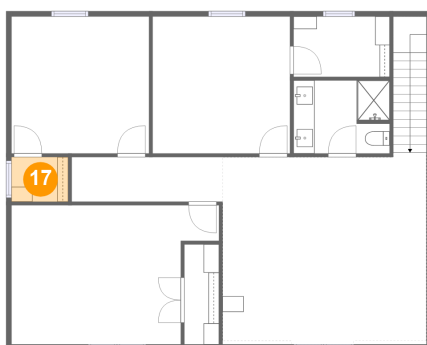
16 Floor 3 - Bedroom



Dimensions: 19'8" x 13'2"
Area: 220 sq. ft
Counted as living area: Yes

Heated: Yes
Finished: Yes
Enclosed: Yes
Contiguous: Yes
Permitted: Yes
Wet space: No
Addition: No
Conversion: No

17 Floor 3 - Cl

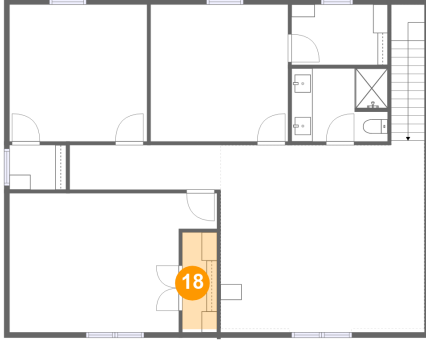


Dimensions: 5'4" x 4'3"
Area: 23 sq. ft
Counted as living area: Yes

Heated: Yes
Finished: Yes
Enclosed: Yes
Contiguous: Yes
Permitted: Yes
Wet space: No
Addition: No
Conversion: No

**620 Diffie Road, Moscow, Fayette County,
Tennessee, United States, 38057**

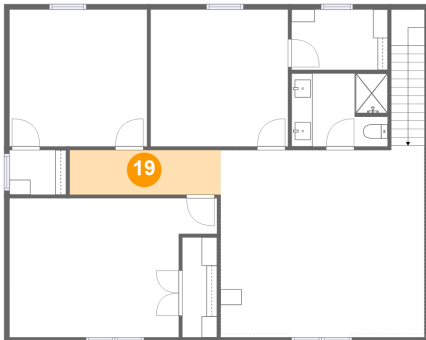
18 Floor 3 - Cl



Dimensions: 3'4" x 9'5"
Area: 30 sq. ft
Counted as living area: Yes

Heated: Yes
Finished: Yes
Enclosed: Yes
Contiguous: Yes
Permitted: Yes
Wet space: No
Addition: No
Conversion: No

19 Floor 3 - Hall



Dimensions: 14'3" x 4'3"
Area: 60 sq. ft
Counted as living area: Yes

Heated: Yes
Finished: Yes
Enclosed: Yes
Contiguous: Yes
Permitted: Yes
Wet space: No
Addition: No
Conversion: No

20 Floor 3 - Bedroom

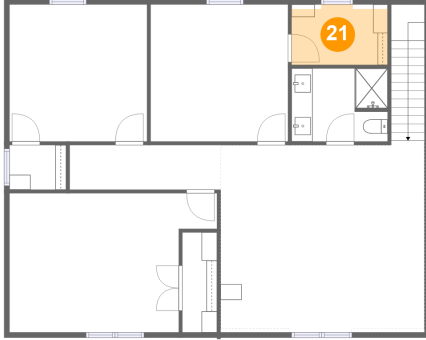


Dimensions: 13'0" x 12'11"
Area: 165 sq. ft
Counted as living area: Yes

Heated: Yes
Finished: Yes
Enclosed: Yes
Contiguous: Yes
Permitted: Yes
Wet space: No
Addition: No
Conversion: No

**620 Diffie Road, Moscow, Fayette County,
Tennessee, United States, 38057**

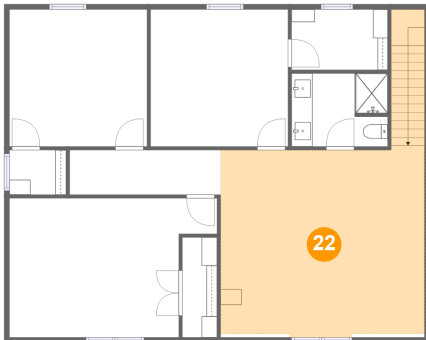
21 Floor 3 - Cl



Dimensions: 9'1" x 5'9"
Area: 49 sq. ft
Counted as living area: Yes

Heated: Yes
Finished: Yes
Enclosed: Yes
Contiguous: Yes
Permitted: Yes
Wet space: No
Addition: No
Conversion: No

22 Floor 3 - Loft



Dimensions: 19'4" x 18'1"
Area: 379 sq. ft
Counted as living area: Yes

Heated: Yes
Finished: Yes
Enclosed: Yes
Contiguous: Yes
Permitted: Yes
Wet space: No
Addition: No
Conversion: No

23 Floor 3 - Bath

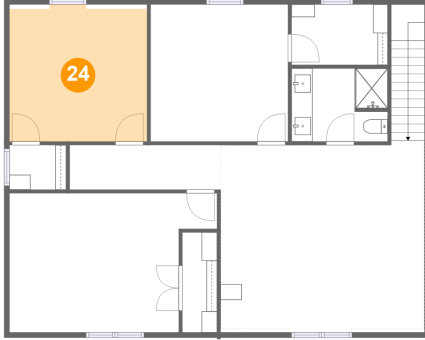


Dimensions: 9'1" x 6'11"
Area: 62 sq. ft
Counted as living area: Yes

Heated: Yes
Finished: Yes
Enclosed: Yes
Contiguous: Yes
Permitted: Yes
Wet space: Yes
Addition: No
Conversion: No

**620 Diffie Road, Moscow, Fayette County,
Tennessee, United States, 38057**

24 Floor 3 - Bedroom



Dimensions: 13'0" x 12'11"
Area: 165 sq. ft
Counted as living area: Yes

Heated: Yes
Finished: Yes
Enclosed: Yes
Contiguous: Yes
Permitted: Yes
Wet space: No
Addition: No
Conversion: No